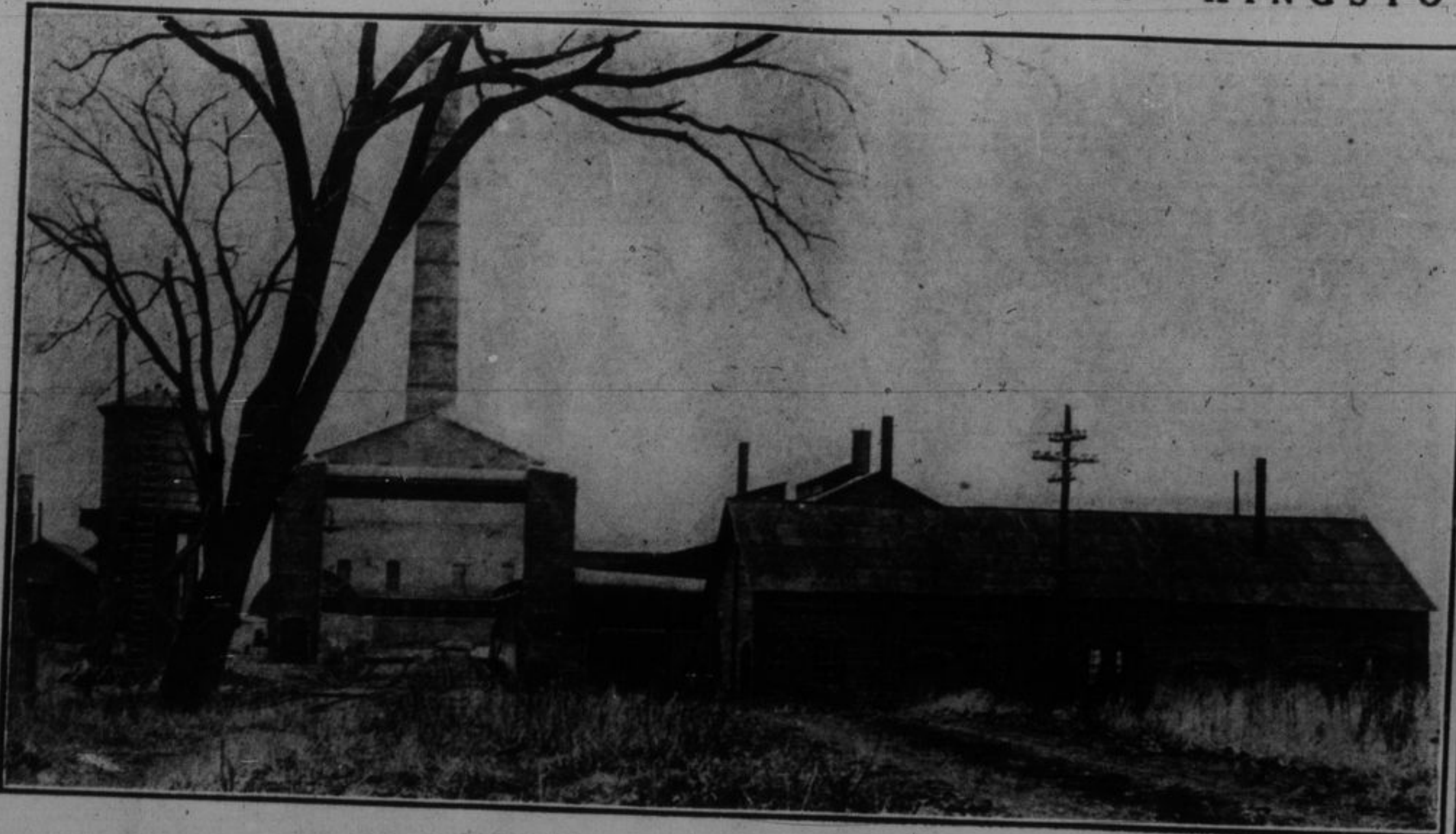


TWO VIEWS OF KINGSTON SMELTING CO., LIMITED



Plant on River Street, Kingston. See main section for special article.

SCHOOL OF SIGNALLING, KINGSTON



Officers in centre: Lieut.-Col. W. J. Brown, G.S.O.; Major D. E. Mundell, Commandant.

(Photo by Blakemore Studio, Kingston.)



LIEUT. JAMES A. FOOTE,

A Kingstonian who was at the front with the original Princess Patricia's C.L.I. He is now with the 256th Railway Construction Battalion, headquarters Toronto.



PTE. JACK H. ORSER,

Formerly of the 146th Batt., now with the 4th C.M.R. in France, son of Mr. and Mrs. H. C. Orser, Glenvale, Ont.



PTE. HARVEY TURCOTTE,

8th C. M. R., now with 8th Battalion, 1st Division, France, son of George Turcotte, 8 Sixth St., Kingston.



SERGT.-TPR. E. R. FILLION,

72nd (Queen's) Battery, Kingston, C. F. A., 16 years old, now in France.



PTE. H. L. BRYANT,

Enlisted in the 146th Battalion, now in France with the 4th C.M.R., son of Mr. and Mrs. J. W. Bryant, 44 Quebec St., City.

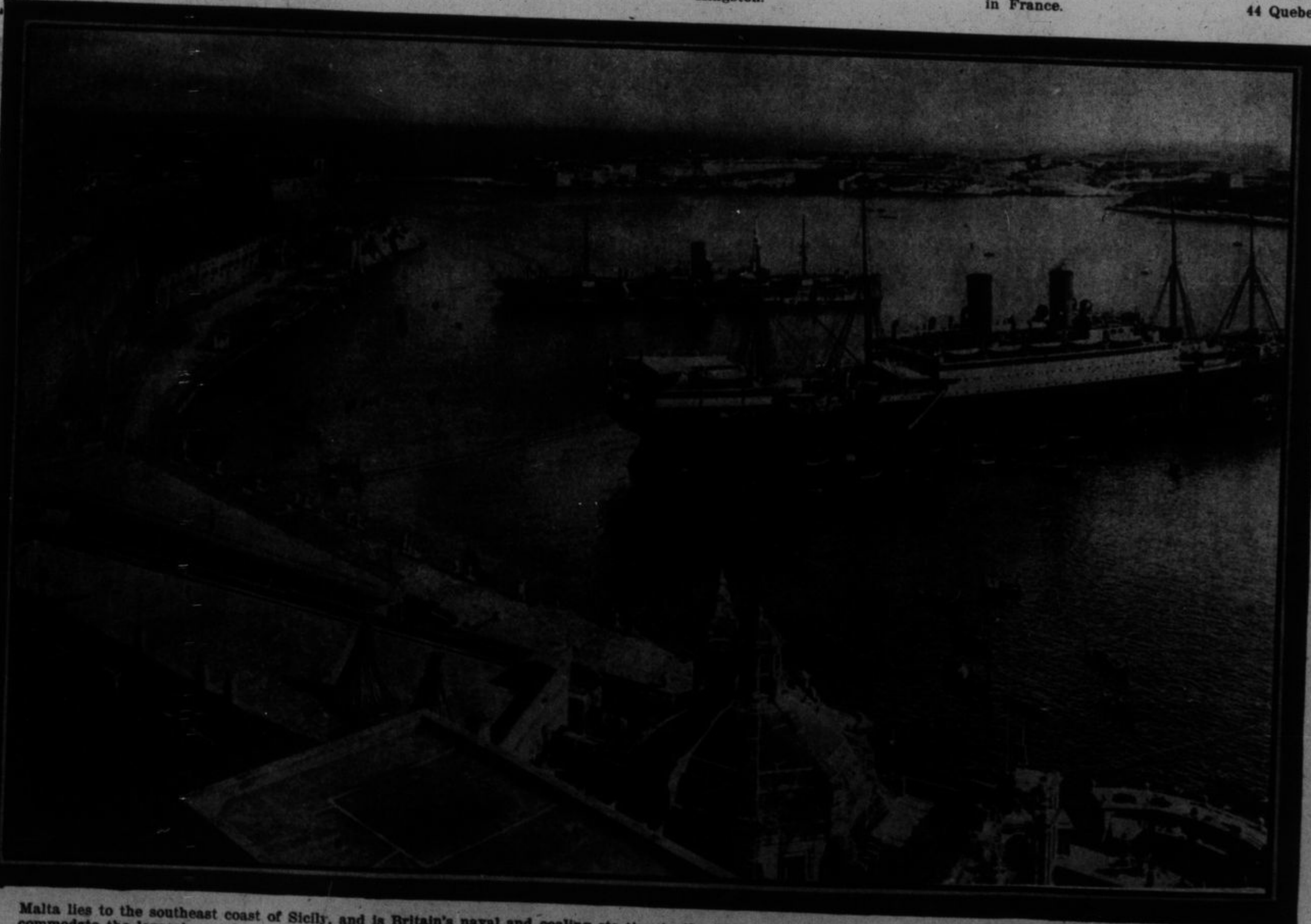


TPR. MELVILLE MOORE,

Portsmouth, Ont., with 8th Canadian Trench Mortar Battery in France. Enlisted with the 8th C. M. R.



PTE. FRANK LARONGE, Enlisted with Medical Corps of 77th Ottawa Battalion, transferred to 38th Ottawa Battalion, now in France. Son of Mr. and Mrs. John Laronge, 183 Colborne Street.



Malta lies to the southeast coast of Sicily, and is Britain's naval and coaling station in the Mediterranean. It has a large and well protected harbor, able to accommodate the largest vessels of the navy and the mercantile marine. It is surrounded by powerful forts. The island fell into British hands after the Peace of Paris in 1814. Its present Governor is Field Marshal Lord Methuen, who is appointed by the Imperial Government, though the colony elects its own Legislature. The population of Malta and the two adjacent islands is about a quarter of a million, one in every ten being either a British soldier or marine.



The great event in the lives of the natives of Malta is the arrival and departure of the Indian and Australasian steamers. The passengers are given an opportunity to walk dry land again for a few hours, and they create an immense trade by buying native curios and souvenirs. The photograph shows the citadel from an anchored merchantman.