



PHOTOGRAPH OF KING GEORGE'S VISIT TO THE SOMME FRONT.
The King at the graveside of Pennington, on the Somme battlefield.



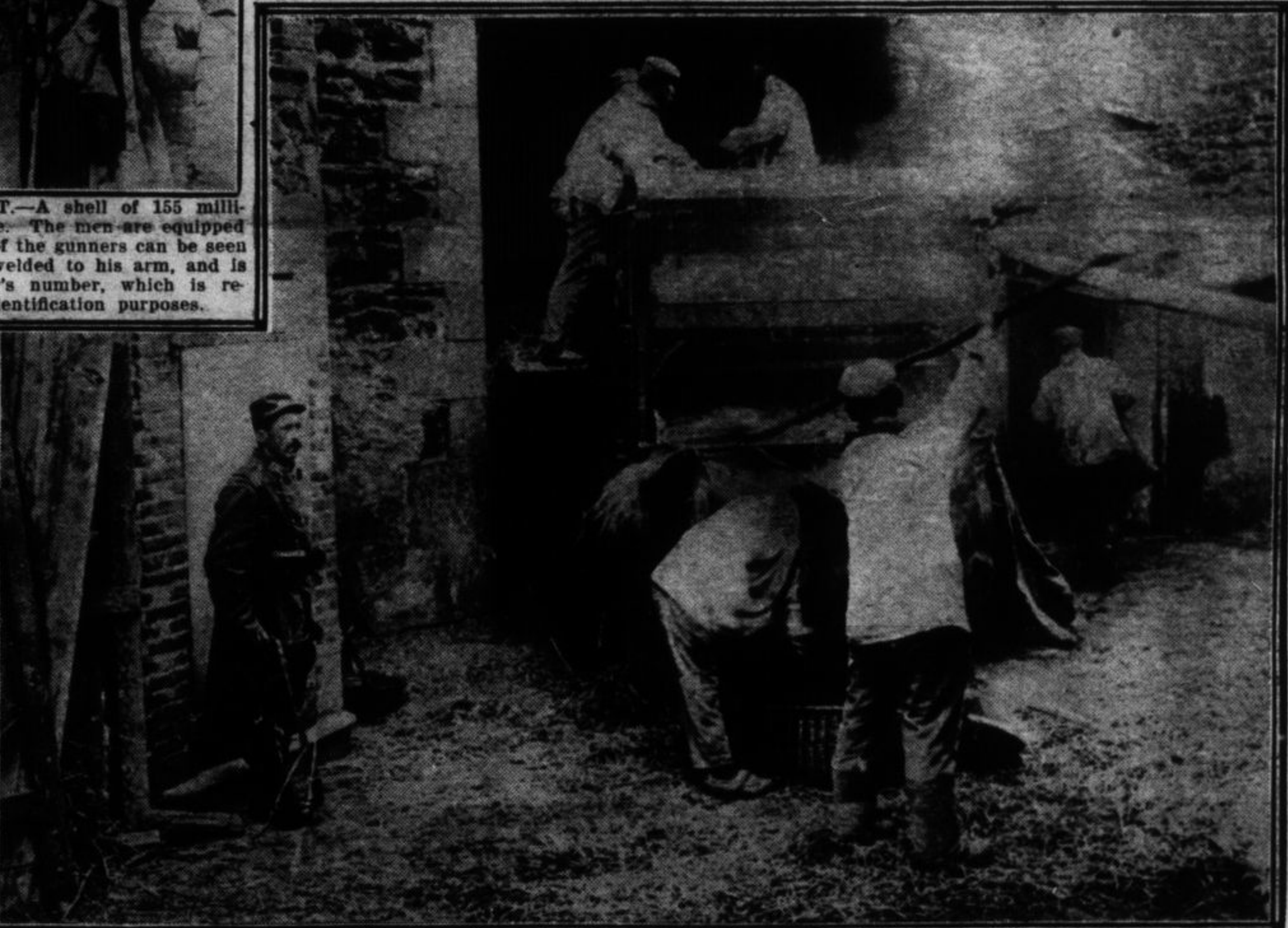
PHOTOGRAPH OF KING GEORGE'S VISIT TO THE SOMME FRONT.
The King and the Prince of Wales (in trench) visit a captured German trench at Fricourt.



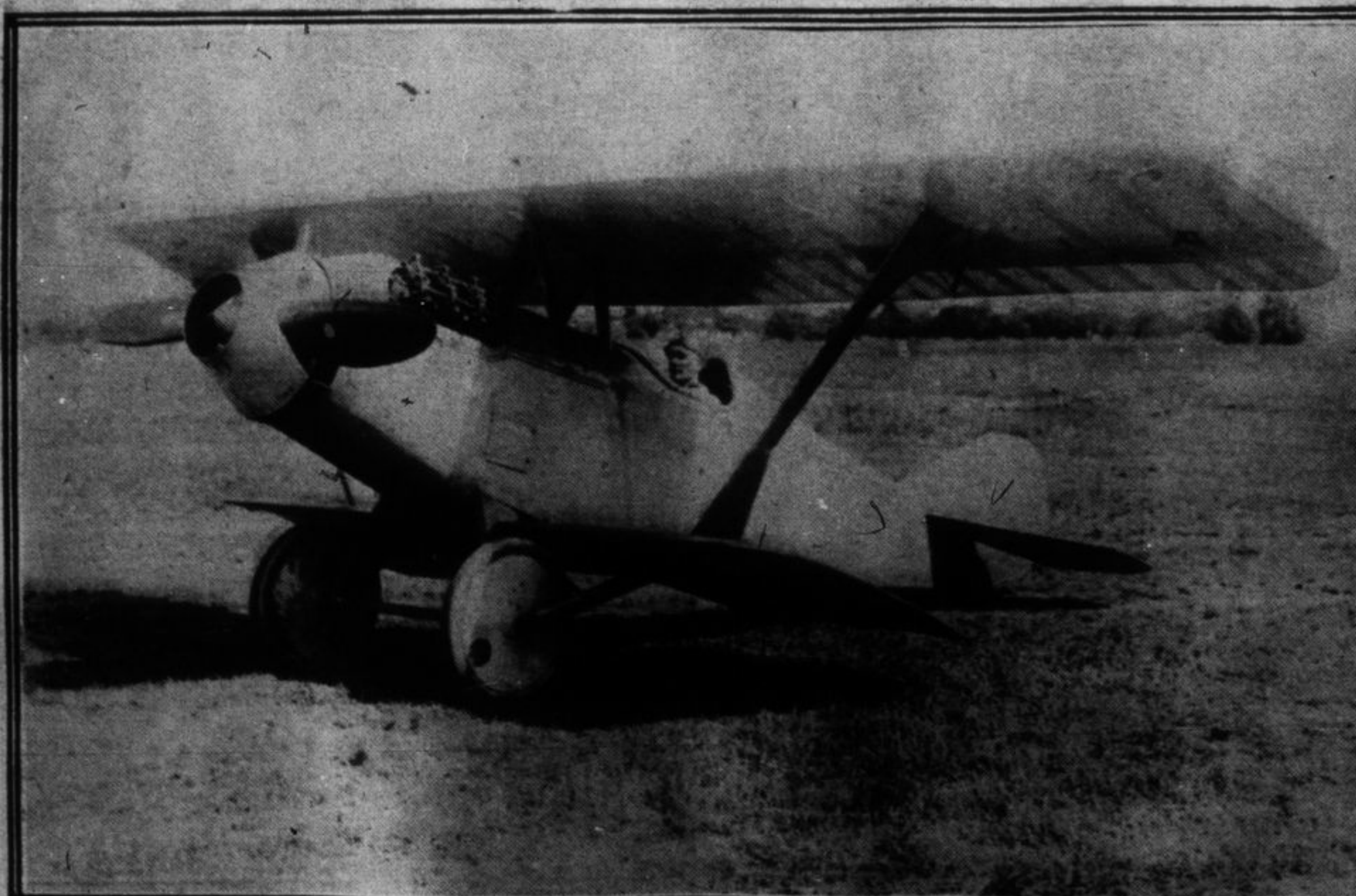
ON THE SOMME FRONT.—A shell of 155 millimetres being set into place. The men are equipped with gas masks. On one of the gunners can be seen a wrist watch, which is welded to his arm, and is stamped with the wearer's number, which is recorded in Paris for identification purposes.



WITH THE FRENCH FORCES ON THE SOMME FRONT.
Gunnery with rapid fire gun behind barrier of rocks. Note how the soldier holding the cartridge belt must lie on his back while the gun is being fired.



HARVESTING IN FRANCE.
German prisoners are working in the French fields to harvest the wheat for the winter. Our photo shows a batch of prisoners feeding a thresher.



PRELIMINARY TRIALS OF CURTISS SPEED SCOUT.—The model S-2 speed scout of 100 horsepower, which has been designed by Mr. Curtiss to eliminate all exposed wires and has but two wing posts, was given its second preliminary tests recently, when pilot Victor Carlstrom flew over a surveyed mile course at a speed of 119 miles per hour. This is the fastest time yet made with a motor of 100-horsepower, and establishes a new world's record for such a power plant.



KING AND QUEEN OF BELGIUM VISIT THE SOMME.
Photograph shows King Albert and the Queen of Belgium and their sons visiting the Somme.