

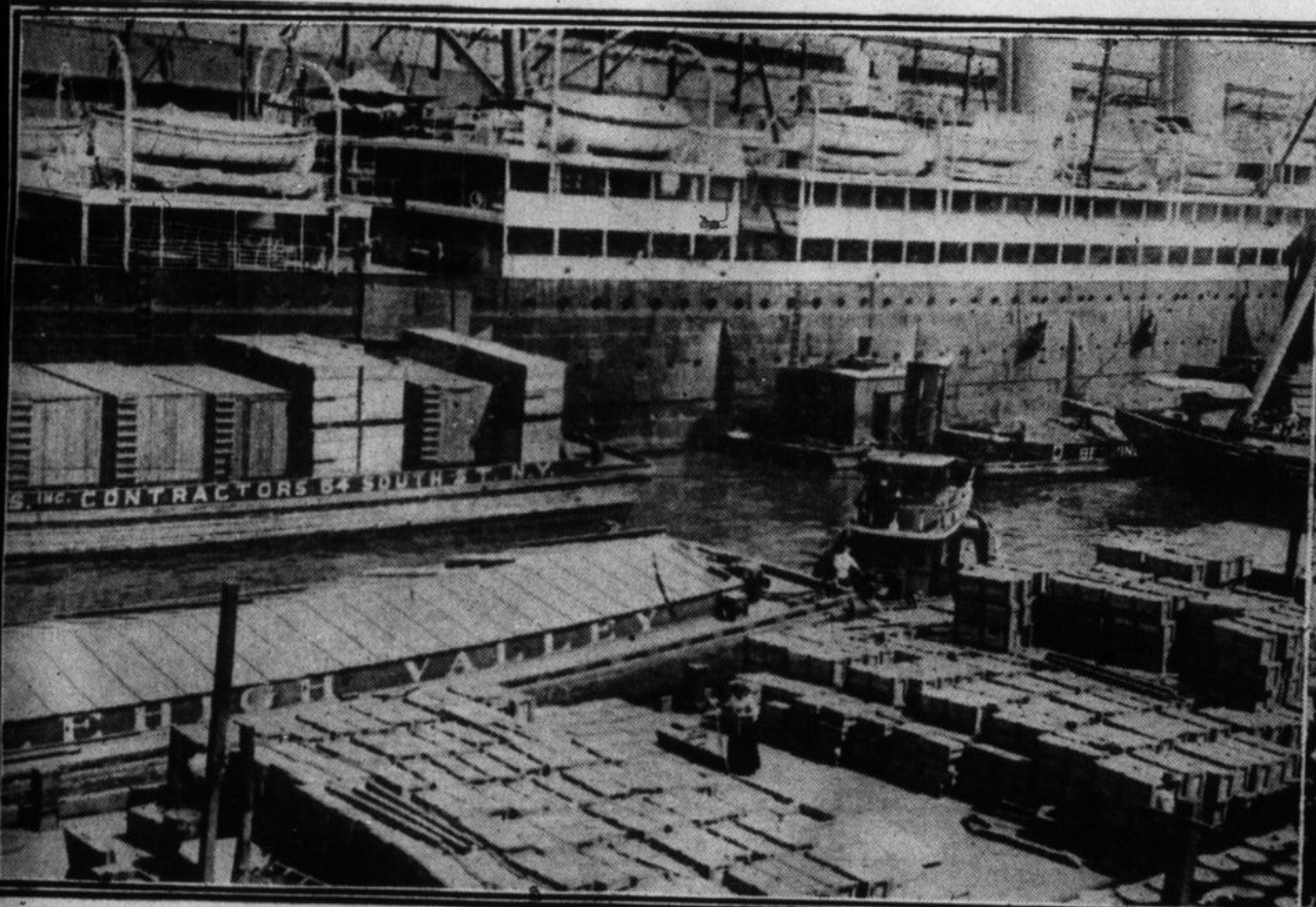


Type of Roumania's infantry which the Teuton allies will be called upon to face.



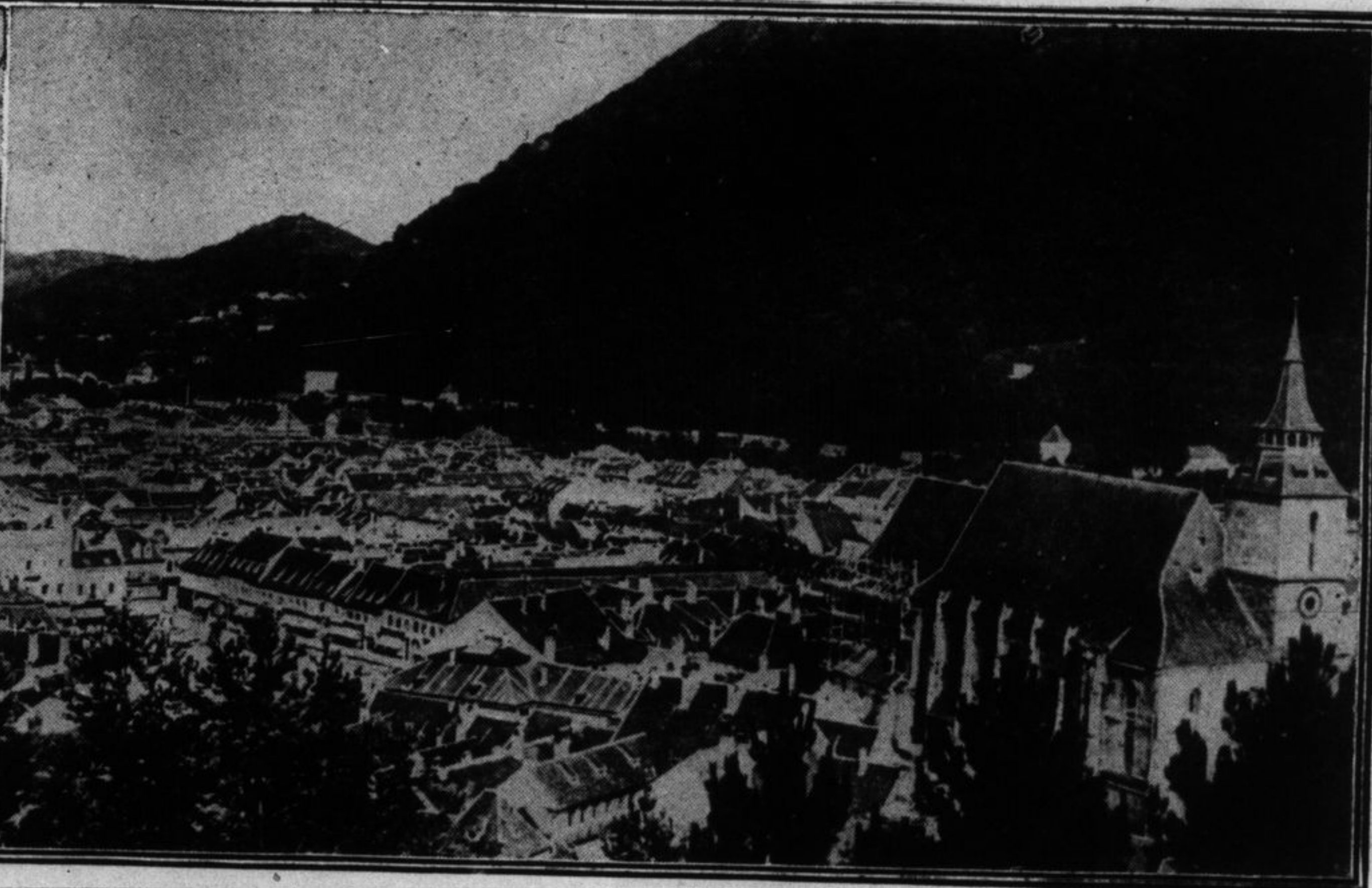
ROUMANIA AT LAST ENTERS THE WAR.

Roumanian soldiers, with full equipment, ready for the campaign against Austria.



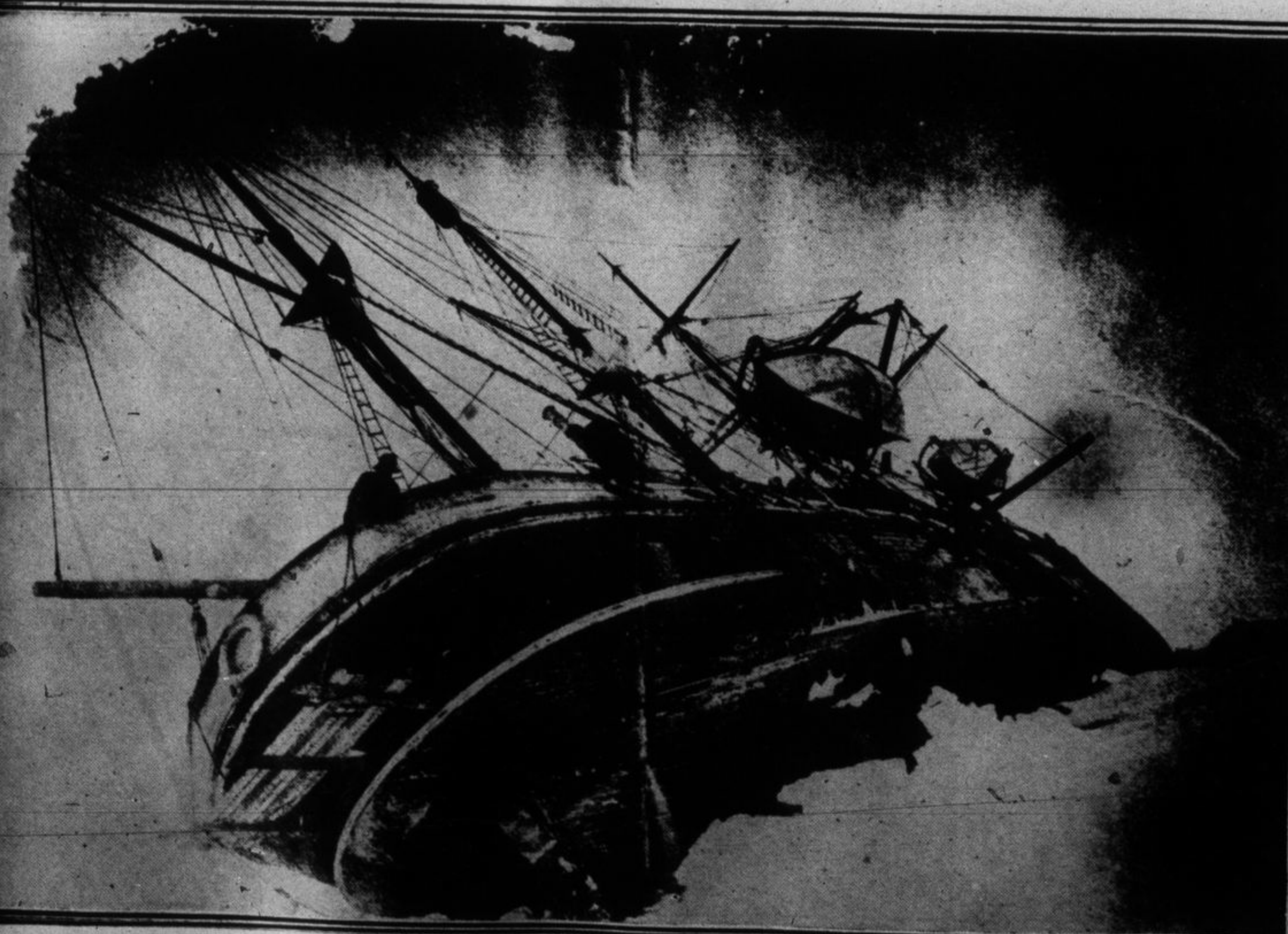
MUNITIONS FOR THE ALLIES.

A busy scene alongside the S. S. Baltic, of the White Star Line, several days before the ship is ready to put to sea. Munitions of every description, amounting to thousands of tons, are carried on each voyage. The loading of the vessel is done with great secrecy, and these are the first photographs to be taken on this subject since the prohibition of taking such pictures was put in effect by the British Admiralty. On the barge, close to the side of the vessel, are trench diggers, each weighing 16 tons. The cases on the barge in the foreground contain cartridges and shells.



VIEW OF KRONSTADT, TRANSYLVANIA

Which has fallen into the hands of the Roumanians within the first few days' fighting.



The Endurance, anchored off the Falkland Islands.



SHACKLETON'S OWN PICTURES OF HIS WRECKED EXPEDITION.

From left to right: Tom Green, Sir Ernest Shackleton, Capt. Wolsley, of the Endurance. Photographed at the Falkland Islands.