



MUNITION EXPLOSION ON BLACK TOM ISLAND.

Just a few of the hundred freight cars that contained shrapnel and ammunition that were destroyed by the explosion.

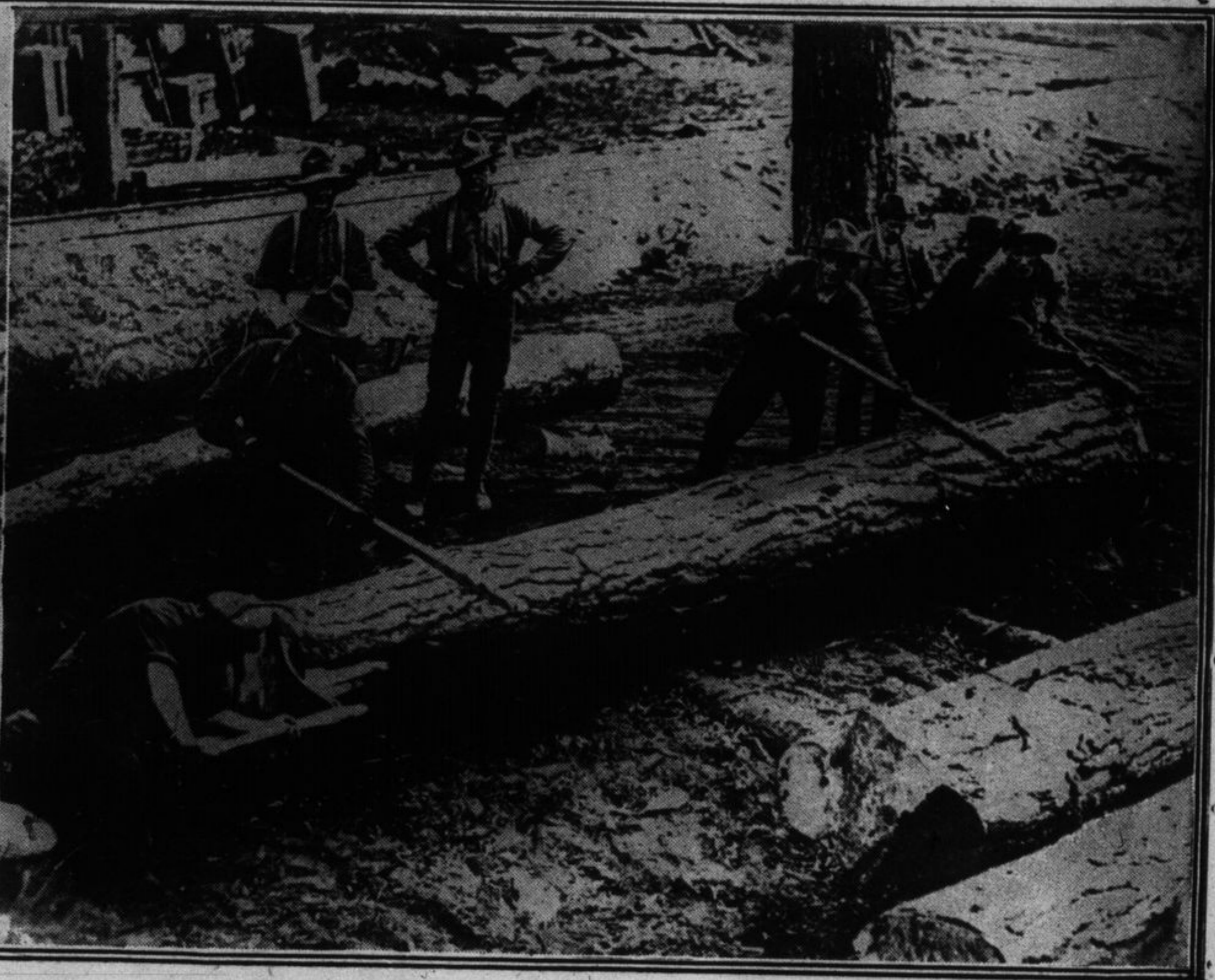
One of the many barges that were set adrift burning. Many of these barges contained dynamite and were a great danger to the islands as well as the shipping in the bay.

Just a few of the hundred freight cars that contained shrapnel and ammunition that were destroyed by the explosion.

### Canadian Lumbermen Cutting Timber in England for Use at the Front



A Canadian lumber camp in an English forest. The Canadian Forestry Battalion at work in Windsor Forest, at their new saw mill, where the felled trunks are sawn up into planks. A large part of these boards will be used for supports in the trenches. Four horses are used to draw one of the heavy trees. Note stack of logs behind.



Lumbermen using their large steel grapplers to roll a heavy trunk into position.



View of the mill and part of the camp where the cut timber is stacked to dry.



Inside the saw mill. The circular saw cutting up the trees into planks.