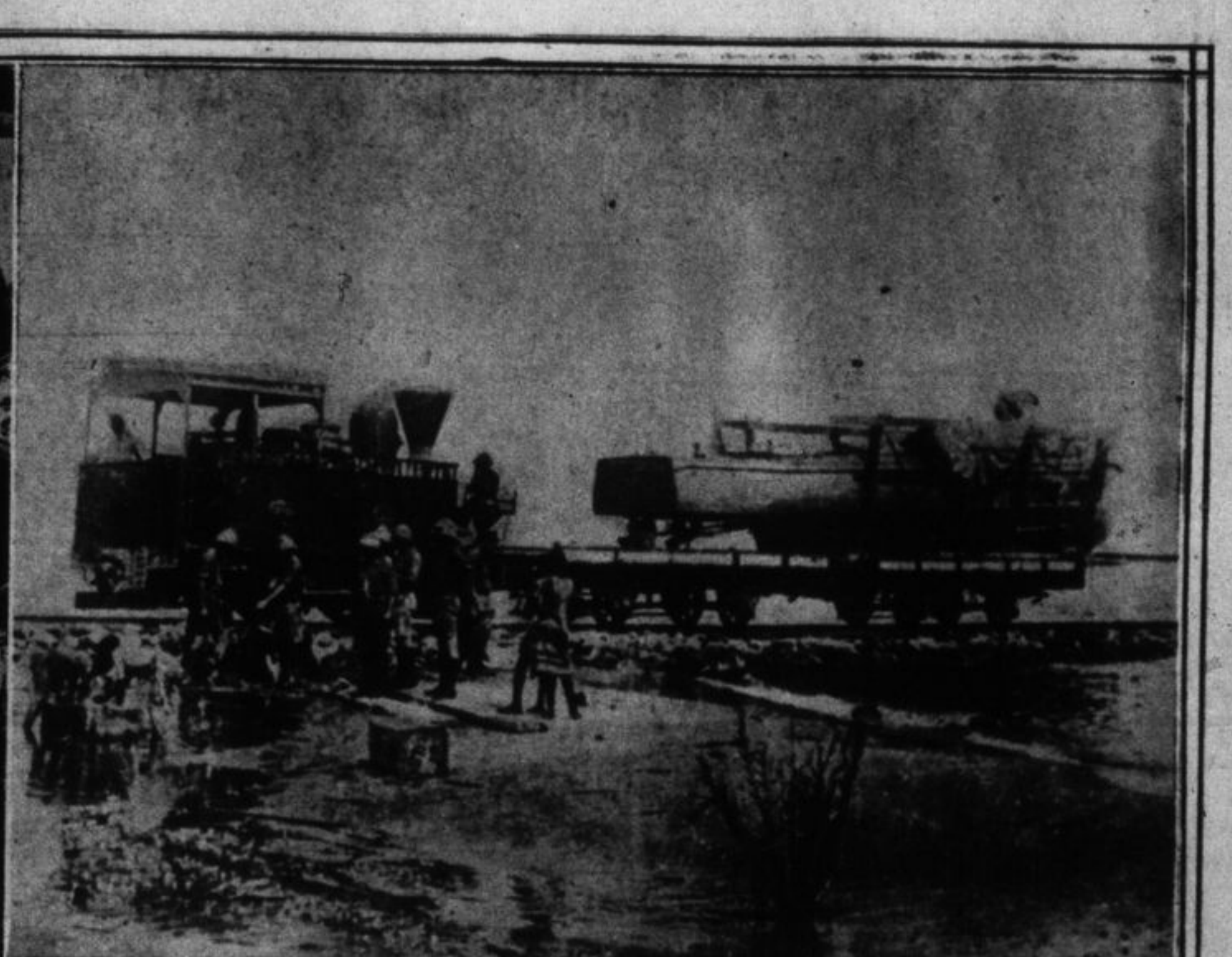
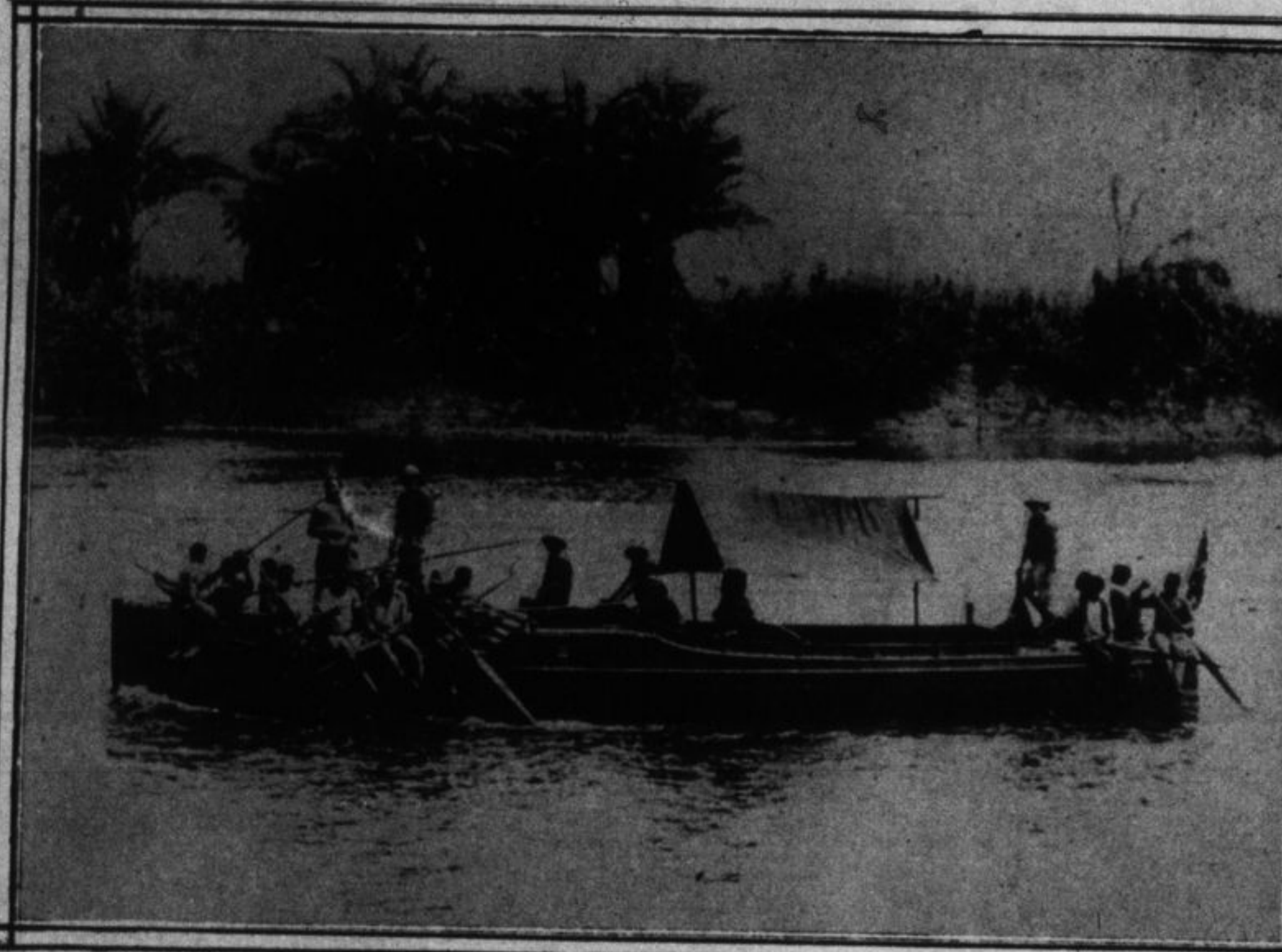




Transporting the British armed motor boats the Mimi and Tou Tou, 2,800 miles through the African bush and over rough country from Cape Town to Lake Tanganyika, to be used against the Germans on the lake. The expedition consisted of 27 officers and men with numerous native carriers. The boats were transported by tractors and a distance of twelve miles a day was considered good. Photo shows natives with block and tackle lowering boat down a steep grade.

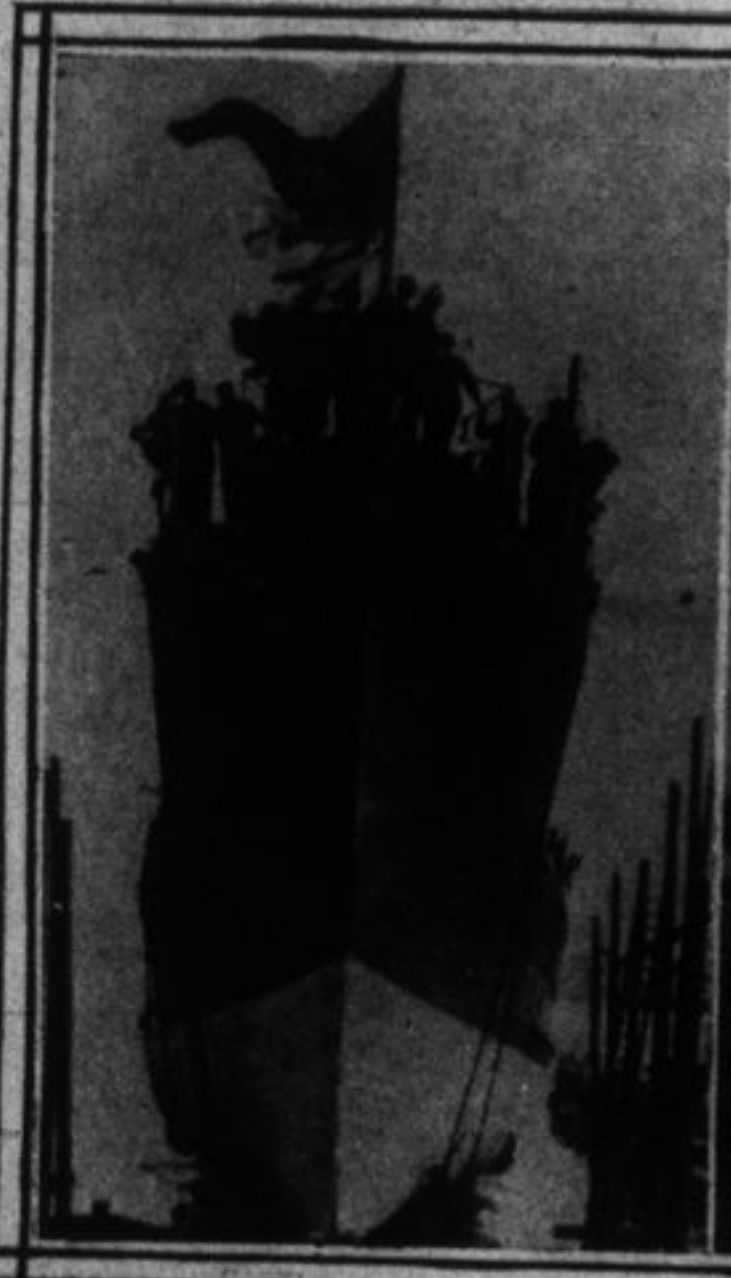
THE UNITED STATES ARMY'S ONLY MOTOR CYCLE BATTERY. It is equipped with a rapid fire gun and forms part of the 1st Armored Motor Battery.



AFRICAN NAVAL EXPEDITION TO LAKE TANGANYIKA. "Mimi" being paddled along the river Luabala by natives.

This is how the German Government meets food supply problems and distribution during the period of the war. The municipality of Schoeneberg, the second largest Berlin suburb, has already arranged to feed 30,000 persons in such institutions. Photo shows scene in a German kitchen.

AFRICAN NAVAL EXPEDITION TO LAKE TANGANYIKA. Boats arriving at the Lake.

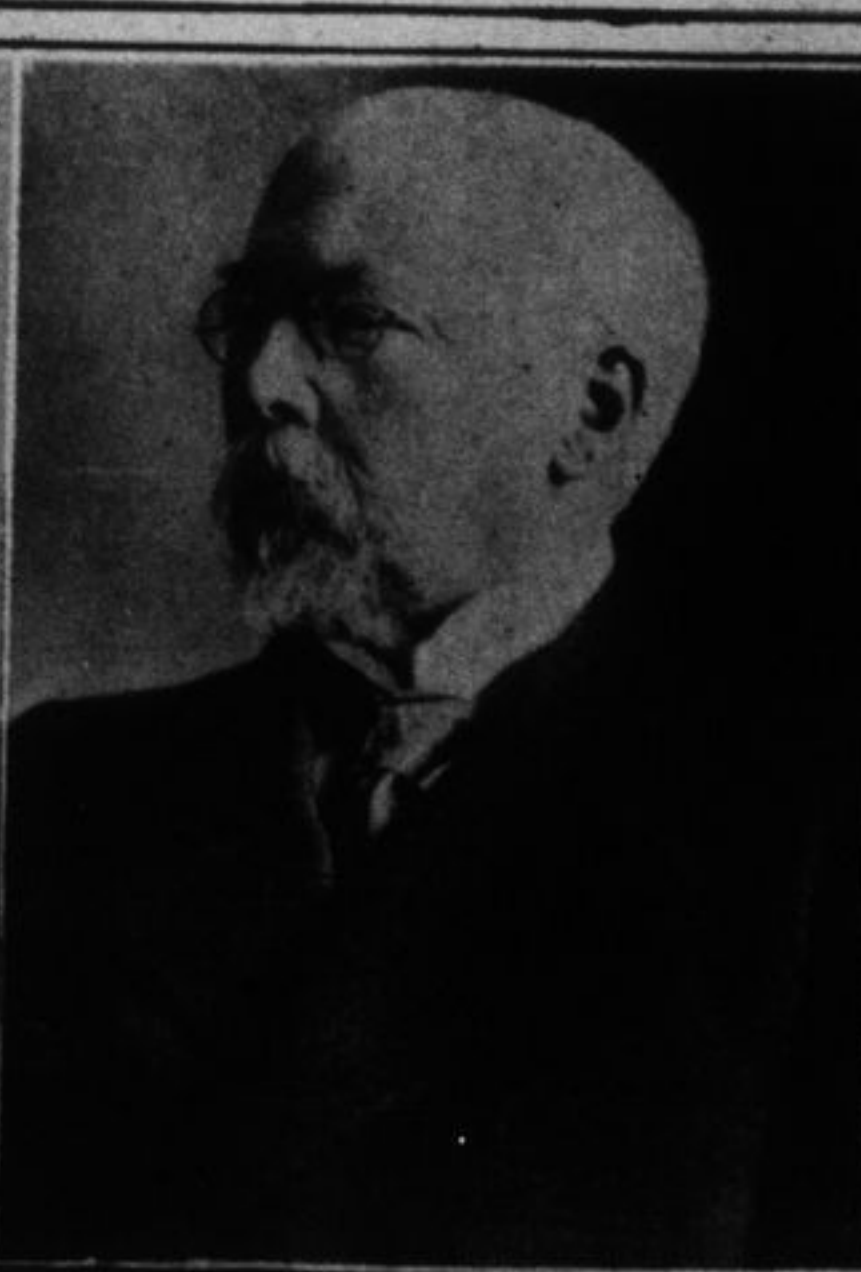
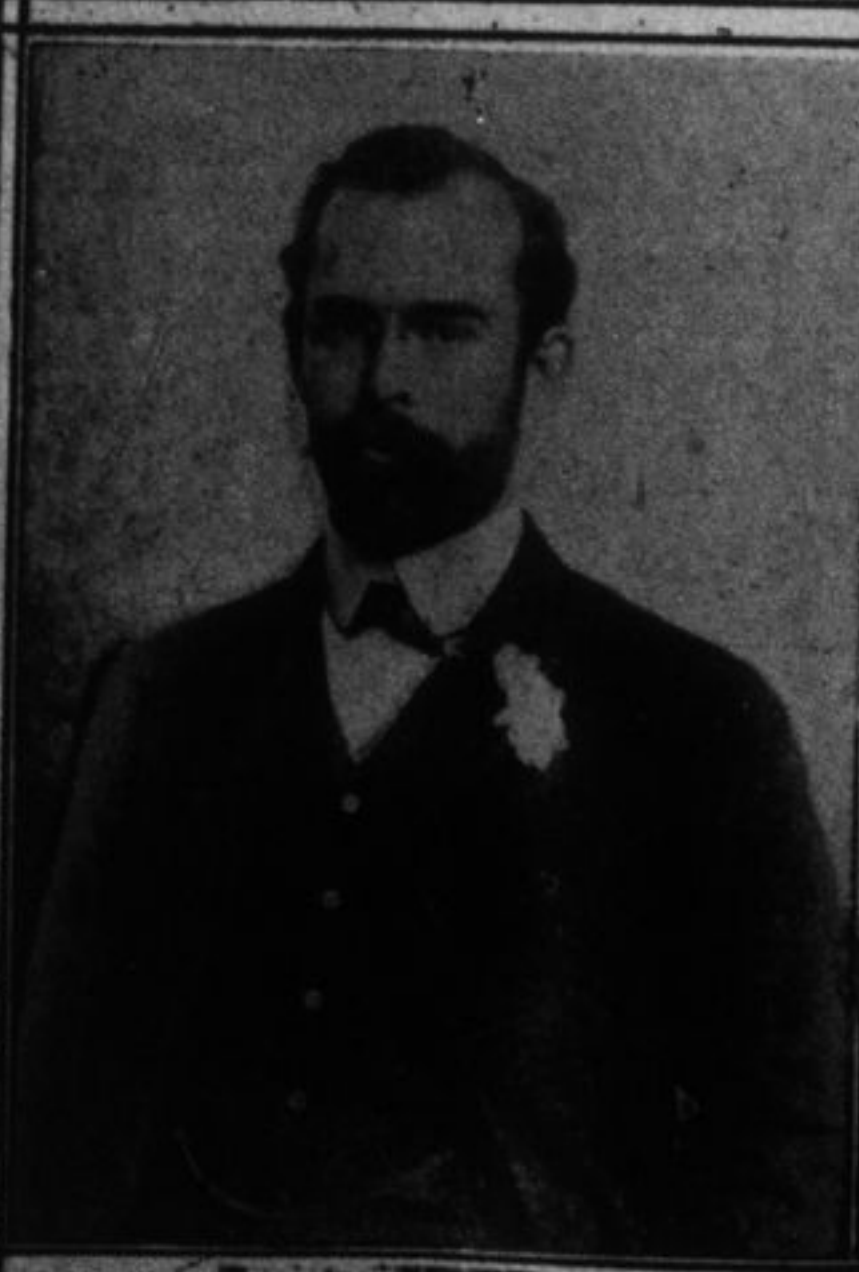


Latest acquisition to the United States navy. The torpedo boat destroyer Wilkes which was launched recently at Cramp Shipyards in Philadelphia, Pa.

WITH THE AMERICAN FORCES IN MEXICO. Army auto truck fitted up as a machine shop near the headquarters at Dublin, Mexico.

Auto trucks taking Mexican laborers to the scene of their duties. These duties consist of building a U. S. military road from Columbus, N.M., to Dublin, Mex., to facilitate the transportation of supplies.

TOP VIEW OF THE SPILLWAY OF THE ELEPHANT BUTTE DAM.



LOUIS W. HILL, Son of the late James J. Hill, and President of the Great Northern Railroad, and now head of the family, who will probably come in for the bulk of the Hill estate, which is estimated at from fifty to one hundred millions.

COUNT HERTLING, The Bavarian Prime Minister, who has been appointed Provisions Minister of Germany, Bavaria.

DR. WAITE LEAVING TOMBS PRISON FOR SING-SING, Where he will be executed the week of July 10 for the murder of his mother-in-law and father-in-law.

ADMIRAL BEATTY, OF THE BRITISH NAVY, Who commanded the squadron that out-fought the German fleet off the Denmark coast.

PRINCE EDWARD OF WALES in his regimental uniform. He is reported engaged to the Princess Yolanda of Italy, who is of the Catholic faith, and it is stated that any religious difficulty will be removed by the Princess embracing the faith of the Church of England.

PRINCESS YOLANDA, OF ITALY, who it is rumored will be the betrothed of Prince Edward of Wales. To unite England and Italy in this way, the present religious difficulty will have to be removed by having the Princess forsake the Roman, Catholic faith for that of the Church of England.