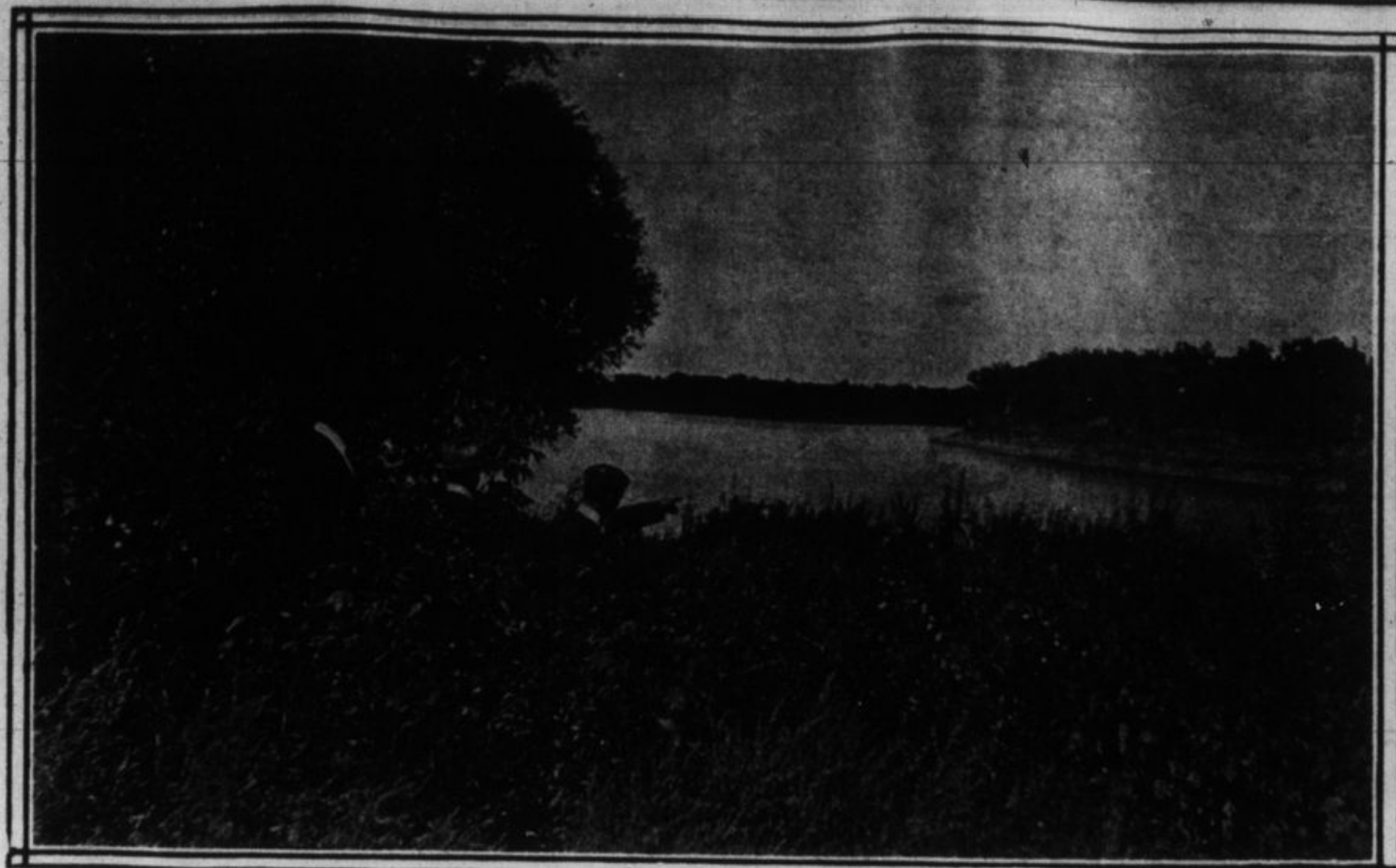




A. PEARSON AND HIS FISH CATCH AT RED DEER, LAKE OF THE WOODS EAST OF MINAKI.

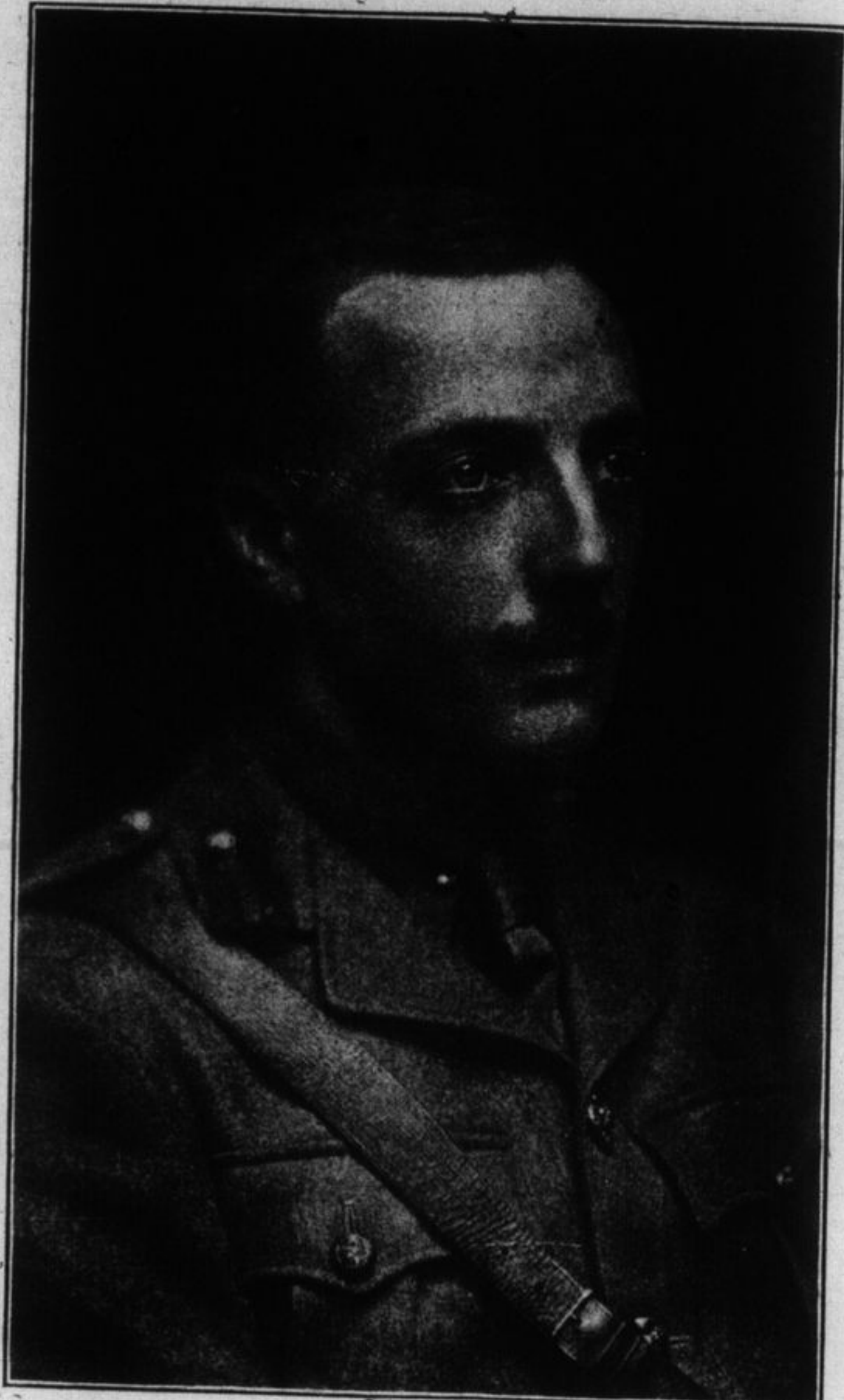


SCENE ON THE BANKS OF THE RED RIVER NEAR WINNIPEG.



A RED CROSS ORATOR.

Miss Kathleen Burke, who has charmed Montreal audiences recently.



MAJOR W. H. CLARK KENNEDY. Who fought through all the battles round Ypres, for which he received the D. S. O. from the hands of the King, and the French Military Cross. He is now on the Staff.



PTE. ART. GREER, 59th Battalion, son of Mr. John Greer.



LIEUT. F. C. HAMBROOK. With the 136th Battalion at Port Hope.



"SERGEANT BEN."

Mascot of the Second Artillery Brigade, Ammunition Column, Canadian Field Artillery—now "Somewhere in France." This picture was sent from "Somewhere in Belgium," by Quartermaster-Sergeant A. W. Mason, to Mr. R. A. Moore, of this city. "Sergeant Ben" has waged relentless war on his enemies—rats—killing, on an average, fourteen a day.



GUNNER GEORGE SELF. Kingston, overseas with "B" Battery, R. C. H. A.

A WOMAN'S MESSAGE TO WOMEN. If you are troubled with weak, tired feelings, headache, backache, bearing down sensations, bladder weakness, constipation, catarrhal conditions, pain in the sides regularly or irregularly, bloating or unnatural enlargements, sense of falling or misplacement of internal organs, nervousness, desire to cry, palpitation, hot flashes, dark rings under the eyes, or a loss of interest in life, I invite you to write and ask for my simple method of home treatment, with ten days' trial entirely free and postpaid, also references to Canadian ladies who gladly tell how they have regained health, strength, and happiness by this method. Write to-day. Address: Mrs. M. Summers, Box. 909 Windsor, Ont.

**This Great Cosy Rocker**  
**Only \$8.95**

Wonderful value this! Either chair or rocker at this price. Deep, comfortable spring seat, upholstered in fine quality leatherette, choice of black or brown covering. Sent to any station in Ontario at above price.

**Catalogue No. 21**  
shows hundreds of similar good values in furniture for all rooms in the home. Write to-day to

**Adams Furniture Co., Ltd.**  
TORONTO  
Canada's Largest Homefurnishers

**GARDENING TIME IS NOW HERE**

**The Proper Tool for Every Use**  
**"5 — IN — 1"**  
(Five Tools in One)

Every flower and garden tool you need in one neat handful.

**INSTANTLY ATTACHABLE**  
The "lugs" on each individual tool fit into corresponding sockets in the handle "head," preventing turning and making it as rigid as if forged into a single piece.

**COMBINATION HANDLE**  
Seasoned maple—heavily ferruled, steel shaft. One turn of the handle locks it to any tool.

**WEEDER**  
or Cultivator. Invaluable in making the earth ready and in keeping it arable.


**HOE**  
Finest heavy steel—for digging, scraping or loosening the earth.

**TURF CUTTER**  
For trimming edges of paths, cutting sod, designing grass plots or shaping flower beds.

**SICKLE**  
Keen cutting edge—back flanged for extra strength—oil-tempered tool steel.

**TROWEL**  
For setting out plants, or light spading, potting or window-box use.

**DIRECTIONS**  
Hold each tool so the lugs point towards the head of the handle, as the lugs fit into depressions in the handle head. A simple twist of the wrist locks it fast.



Sent prepaid to any address in Canada for \$2.25. Remit by Money Order, Certified Cheque or Cash, to

**LEONARD ROWE**  
7 Mail Building, Toronto, Ontario