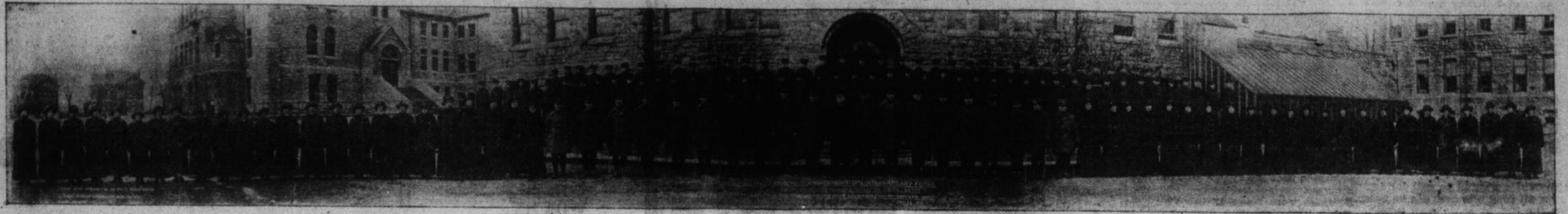


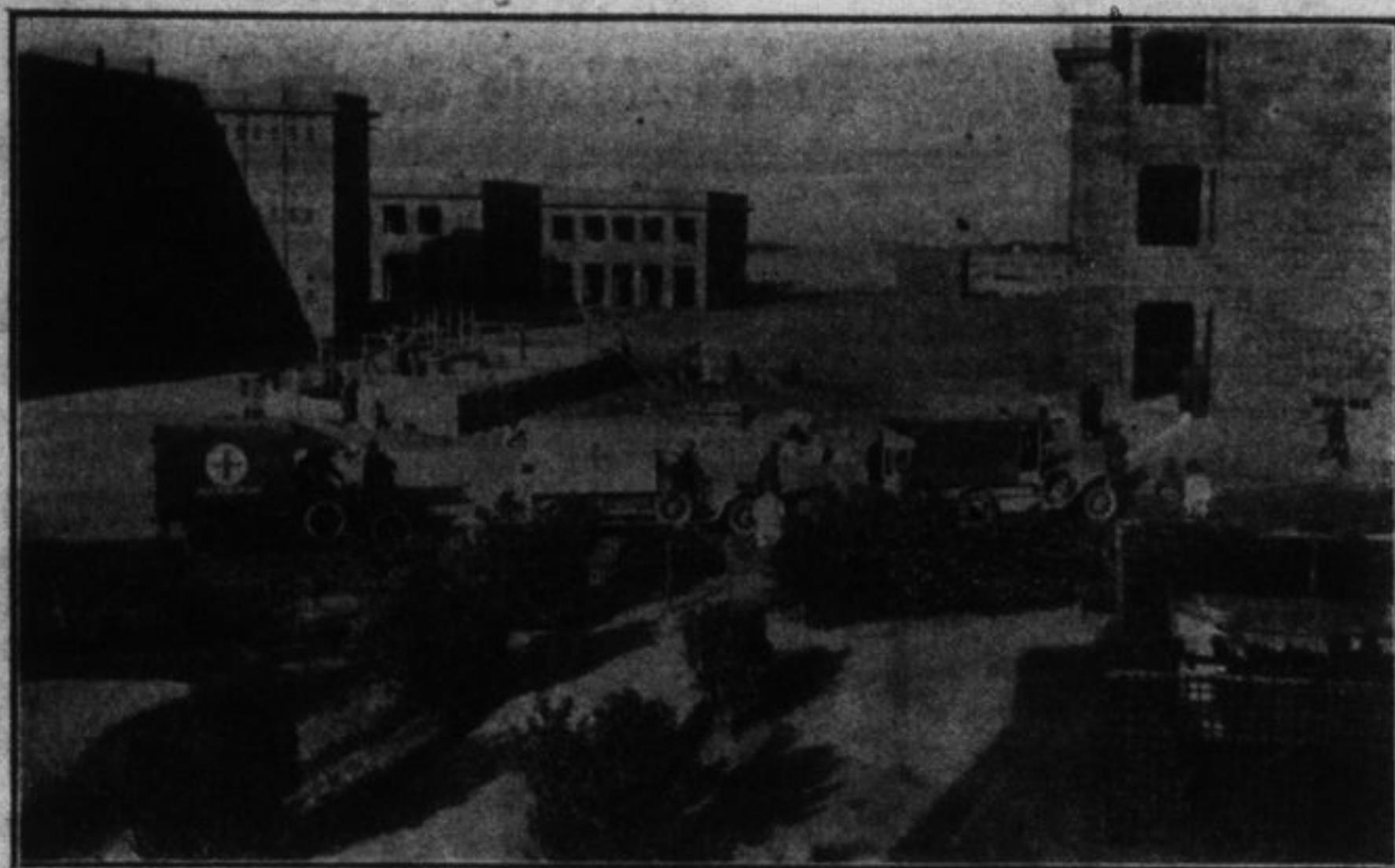


QUEEN'S STATIONARY HOSPITAL

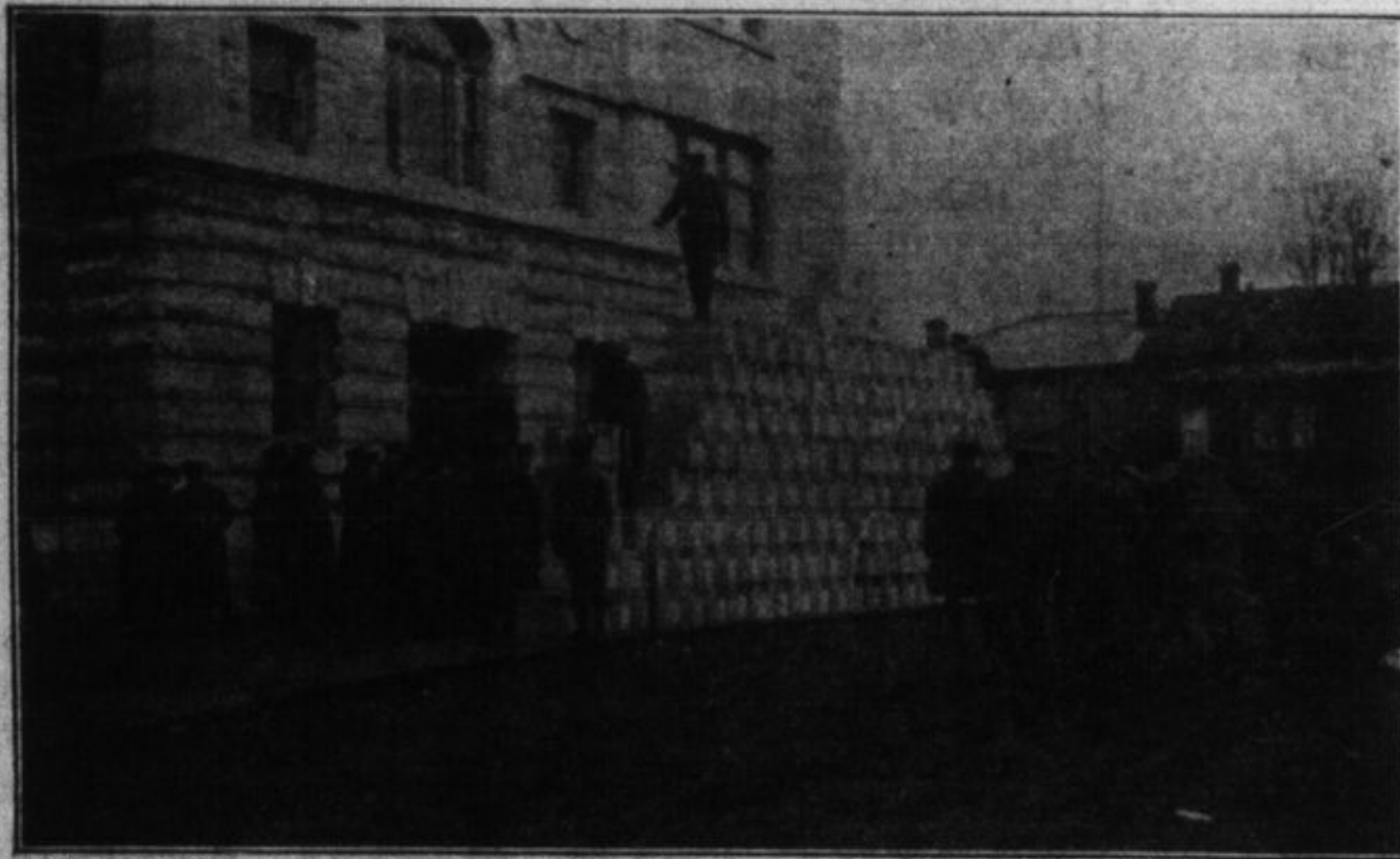


Reinforcements, Queen's Hospital, with Principal Gordon and Dean Connell. Left Kingston, February 28th, 1916.

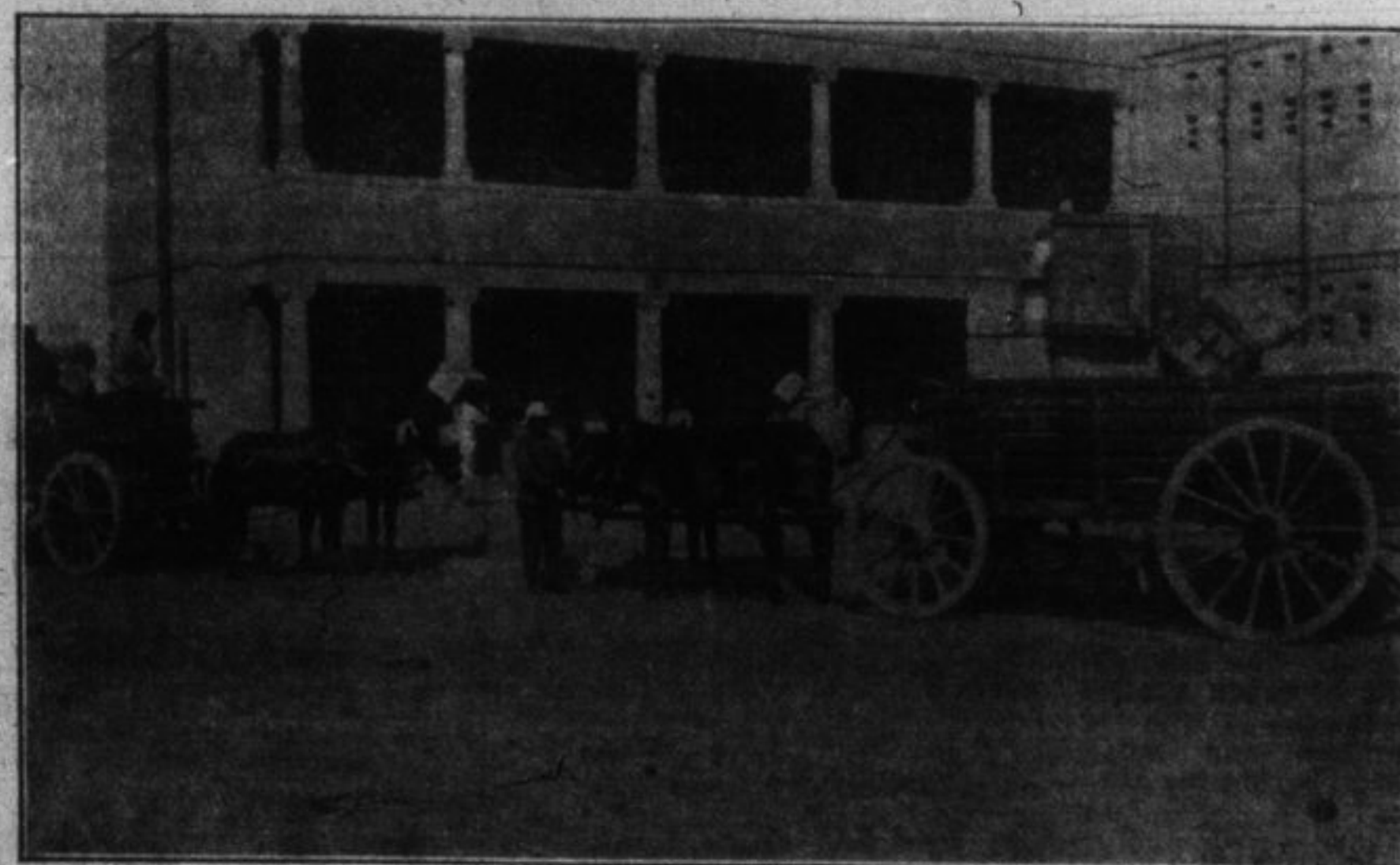
Reinforcements that left Kingston on February 28th, 1916, to convert No. 5 Stationary Hospital, (Queen's) into No. 7 General Hospital (Queen's).



Convoy of wounded arriving. Operating room in course of construction.



Red Cross Hospital supplies ready to leave Kingston with Reinforcements.



Red Cross Hospital supplies arriving at Queen's Hospital, Cairo.



Queen's Hospital, Cairo. Buildings occupied by patients.

LIST OF REINFORCEMENTS

In December the War Office determined to make Queen's University Hospital a General Hospital and asked the University authorities to recruit for this purpose 19 captains, 1 quartermaster, 1 warrant officer, 48 nurses, 6 sergeants, 79 men. The following are those selected out of many applicants:

- | | | | | |
|--|--|--|---|---|
| Captains:
William Beggs
(in command)
H. G. Murray
R. M. Filson
C. B. Waite
J. T. W. Boyd
R. M. Ferguson
A. Kane
H. A. Cochrane
D. Cruikshank
A. P. Chown
S. E. Thompson
J. Carmichael
A. C. McGlennon
William Hale
R. H. Fisher
J. H. Walmsley
O. Madden
W. A. Claxton
Thomas Little
G. G. Stewart | Quartermaster:
Chas. A. James, Capt. | Warrant Officer:
Sgt. I. Carey, P.A.M.C. | Nurses:
Mrs. R. Robinson,
Provisional Matron
Miss Bertha M. Mowry,
Assistant Matron
Miss Grace Darling
Miss Edith C. Whitlam
Miss Rachel Carmichael
Miss Isabel M. Currie
Miss Helena Hinch | Miss Irene Douglas
Miss Pearl Morton
Miss Gladys Kibborn
Miss Lillian Connerty
Miss Helen D. Sherrar
Miss Grace B. Waters
Miss Stella May Jenkins
Miss Marguerite Ashley
Miss E. G. Moore
Miss Vivian Viola Hamby
Miss Margaret Fay
Miss Mary Ida Moran
Miss Willa Chapman
Miss Wilhelmina Smith
Miss Hattie May Mastin
Miss K. C. Milroy
Miss N. E. Howay
Miss M. E. Misener
Miss E. B. Robb
Miss Stella Hensen
Miss Edith Francis Lloyd
Miss Gladys E. Leslie
Miss Marion Robertson
Miss Jean McGregor
Miss Grace Billings
Miss Ethel M. Roblin
Miss Grace E. B. Nourse
Miss Martha A. Fortune
Miss Ruby E. Hamilton
Miss Gwendolin Colborne
Miss Mary M. Willis
Miss Elsie L. Young
Miss Isabel McEwen
Miss Susan Johnstone
Miss Sophia Carr
Miss Jean McDonald
Miss Vera Strange
Miss Ethel MacNamee
Miss Edith McAlpin |
|--|--|--|---|---|

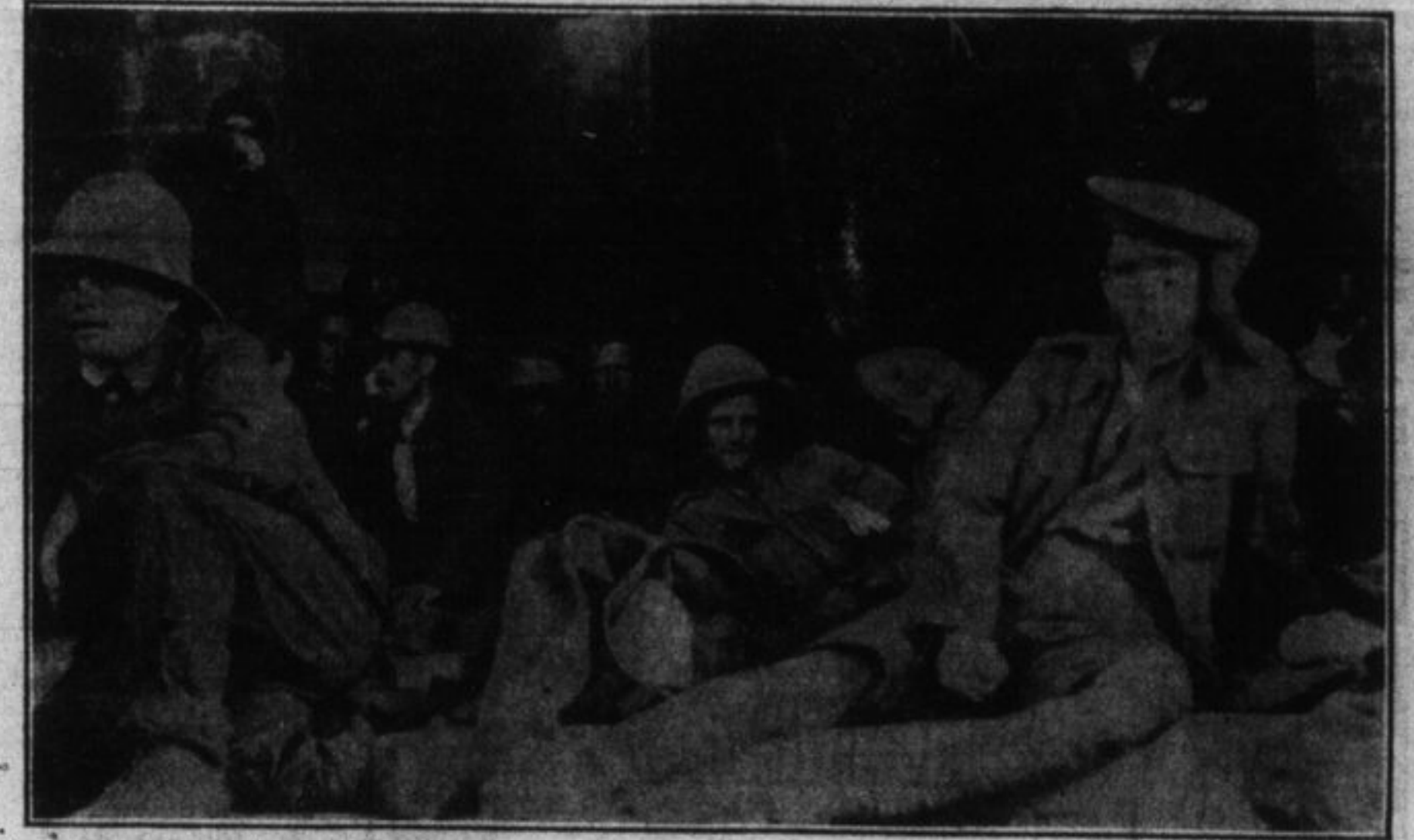
NON-COMMISSIONED OFFICERS AND MEN

- | | |
|---|--|
| Sergt. W. H. Henderson
Sergt. E. J. Kalliel
Sergt. F. S. Keen
Sergt. R. W. MacLennan
Sergt. W. J. Tamblin
Sergt. F. W. Thom
Corp. C. H. Evans
Corp. J. A. Gratton
Corp. R. W. Kirkby
Corp. W. Wilson
Pte. C. H. Abbott
Pte. W. R. Alp
Pte. W. J. Angrove
Pte. E. B. Arrol
Pte. G. Baggs
Pte. F. H. C. Baugh
Pte. E. J. Blakely
Pte. J. F. Bocking
Pte. A. E. Broome
Pte. R. V. Brown
Pte. F. J. Bryan
Pte. H. Burleigh
Pte. W. A. Butlin
Pte. G. E. Campbell
Pte. H. W. Colborne
Pte. S. W. Cork
Pte. G. Davidson
Pte. D. Douglas
Pte. H. A. Dunlop
Pte. G. A. Edmondson
Pte. T. H. Escott
Pte. J. T. Evans
Pte. M. Fawcett
Pte. W. T. Ferguson
Pte. H. Fleet
Pte. R. G. Fry
Pte. D. Gollon
Pte. T. V. Hammond
Pte. W. J. Harrigan
Pte. F. Harrison
Pte. D. Hazlewood
Pte. W. D. G. Herrington
Pte. K. S. Hills | Pte. C. W. Houghton
Pte. N. R. Houston
Pte. W. A. Irwin
Pte. D. S. James
Pte. W. L. James
Pte. C. H. Johnson
Pte. V. N. Kane
Pte. W. K. F. Kendrick
Pte. H. B. Kenner
Pte. R. R. Kerfoot
Pte. H. L. Kirkwood
Pte. F. D. Knapp
Pte. N. S. Knapp
Pte. J. A. Macdonald
Pte. J. A. MacInnis
Pte. W. J. Mackenzie
Pte. Kenneth R. Maitland
Pte. W. A. McBratney
Pte. E. C. McCaig
Pte. H. R. McCallum
Pte. D. McDonell
Pte. D. N. McDonell
Pte. W. S. Melliquham
Pte. J. W. McKinnon
Pte. S. F. Medley
Pte. G. Murray
Pte. W. W. Nash
Pte. G. A. Oatway
Pte. H. Pierce
Pte. J. K. Pomeroy
Pte. C. S. Reid
Pte. C. P. Robinson
Pte. C. C. Shearn
Pte. F. M. Sherlock
Pte. W. Soales
Pte. G. D. Stewart
Pte. J. W. Strader
Pte. A. B. Timothy
Pte. P. R. Urie
Pte. L. I. Walker
Pte. D. J. Wigston
Pte. R. C. Wilson |
|---|--|

(Continued on Page 9).



Convoy of wounded arriving. Dr. Ballantyne supervising.



Convoy of wounded, walking cases, waiting for admission to Hospital.



Beds named by Miss Clara Farrell and Levana Society, Queen's University.



Beds in Connell Ward. Nurse Hastie of Ottawa.