



THE RECENT AIR RAID ON PARIS, ANOTHER EXAMPLE OF GERMAN BARBARISM

1 A VIEW OF THE FUNERAL PROCESSION ON WAY TO THE RESTING PLACE OF THE NON-COMBATANT VICTIMS.

2 A TUBERCULOSIS DISPENSARY DESTROYED BY A BOMB WHICH KILLED SEVERAL PEOPLE.

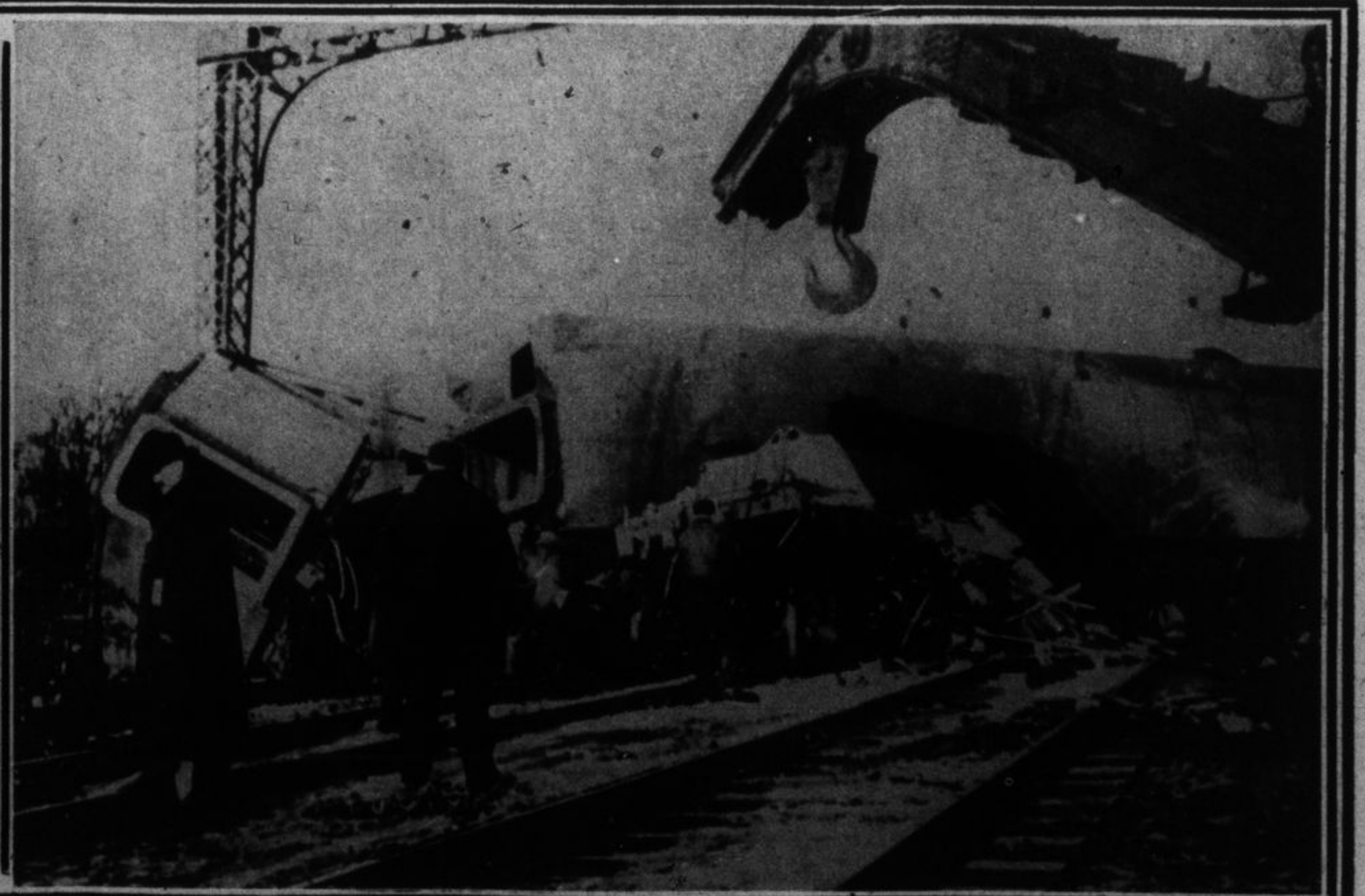
3 A HOLE MADE IN THE PARIS SUBWAY BY A ZEPPELIN BOMB.

4 A CHASM TORN IN THE CENTRE OF A PUBLIC SQUARE IN THE CITY OF PARIS BY A ZEPPELIN BOMB.

5 PHOTO SHOWS A SIX-STOREY HOUSE DESTROYED BY A BOMB IN WHICH SEVERAL PEOPLE WERE KILLED.



The New Haven wreck at Milford, Conn., in which nine were killed and fifty injured. Photo shows locomotive of the special, the gondolas, freight and passenger coach after rolling down the embankment.



The New Haven Railroad wreck at Milford, Conn. The rear car, a day coach of steel, was thrown completely across the four tracks by the impact of the collision. The wrecking crane is about to lift the coach in the search for bodies.