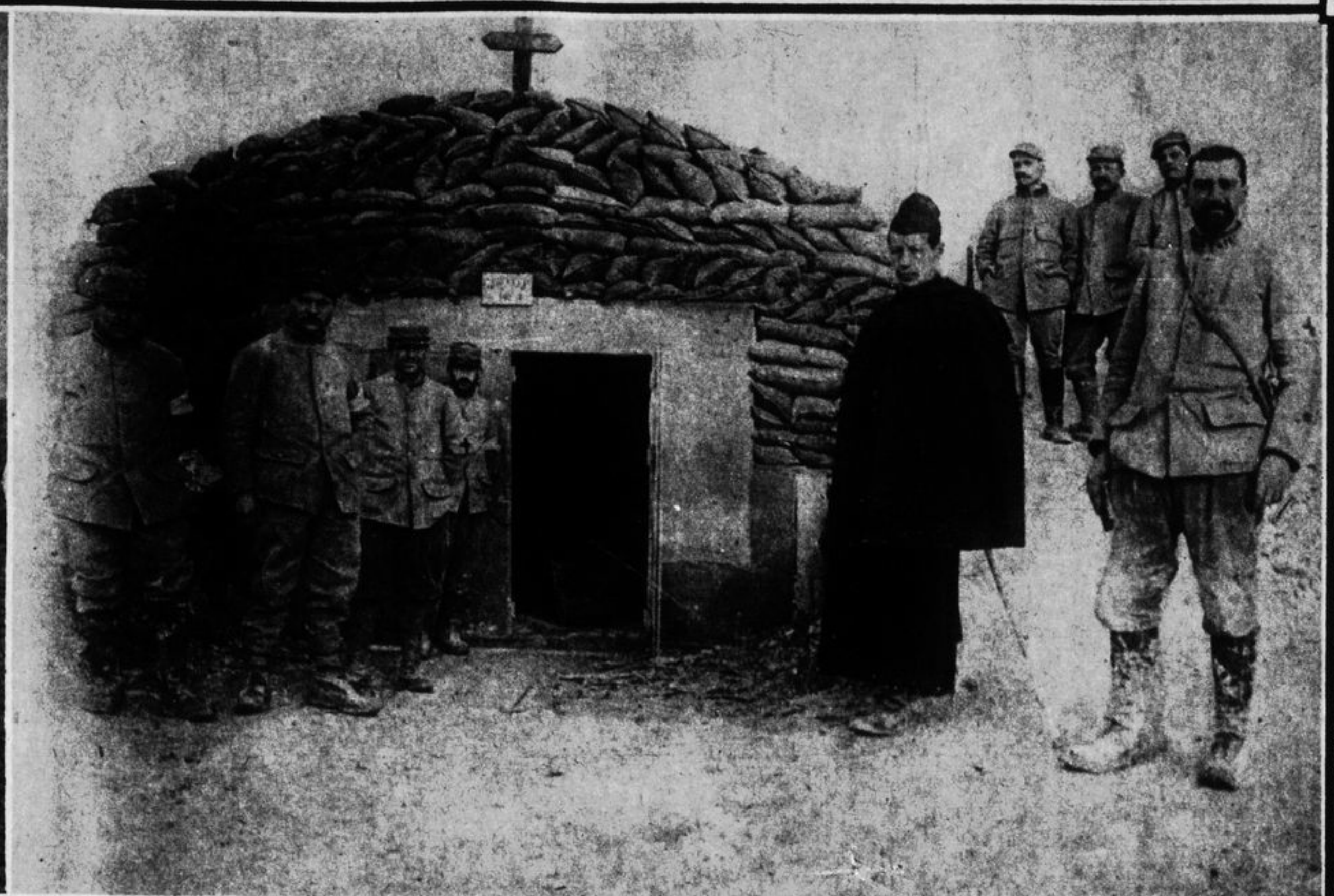




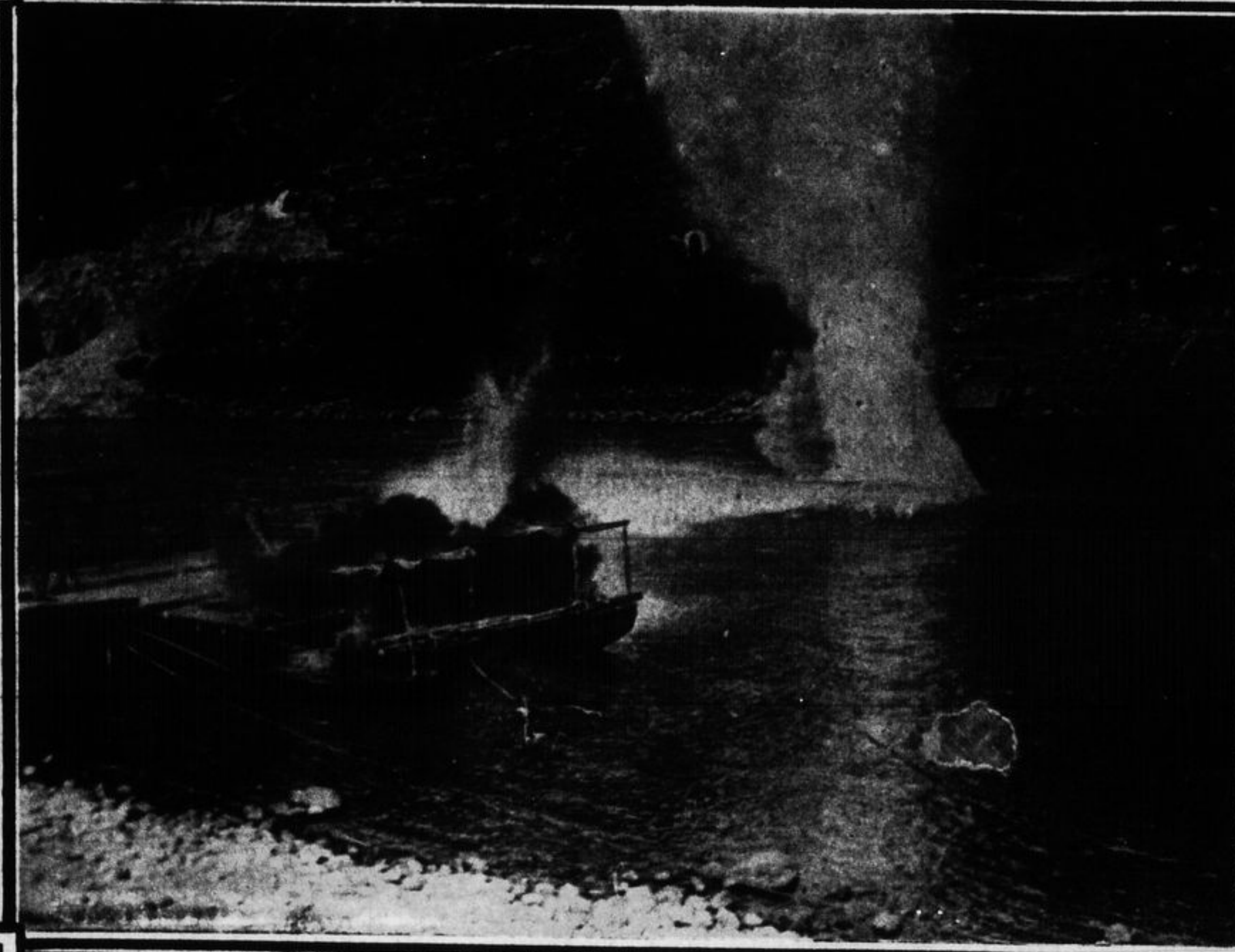
EVACUATION OF GALLIPOLI.

British troops waiting under cover of the shore to be transferred to the transports. That the departure was attended with danger can be seen by the bursting of a shell from a Turkish battery, just off shore.



CHURCH ON THE FIRING LINE

Photo shows a unique chapel, somewhere in Champagne, with its member of the clergy standing to the left of the entrance. The auditorium of the church is underground, and it was necessary to protect the entrance with nine layers of sand-filled bags.



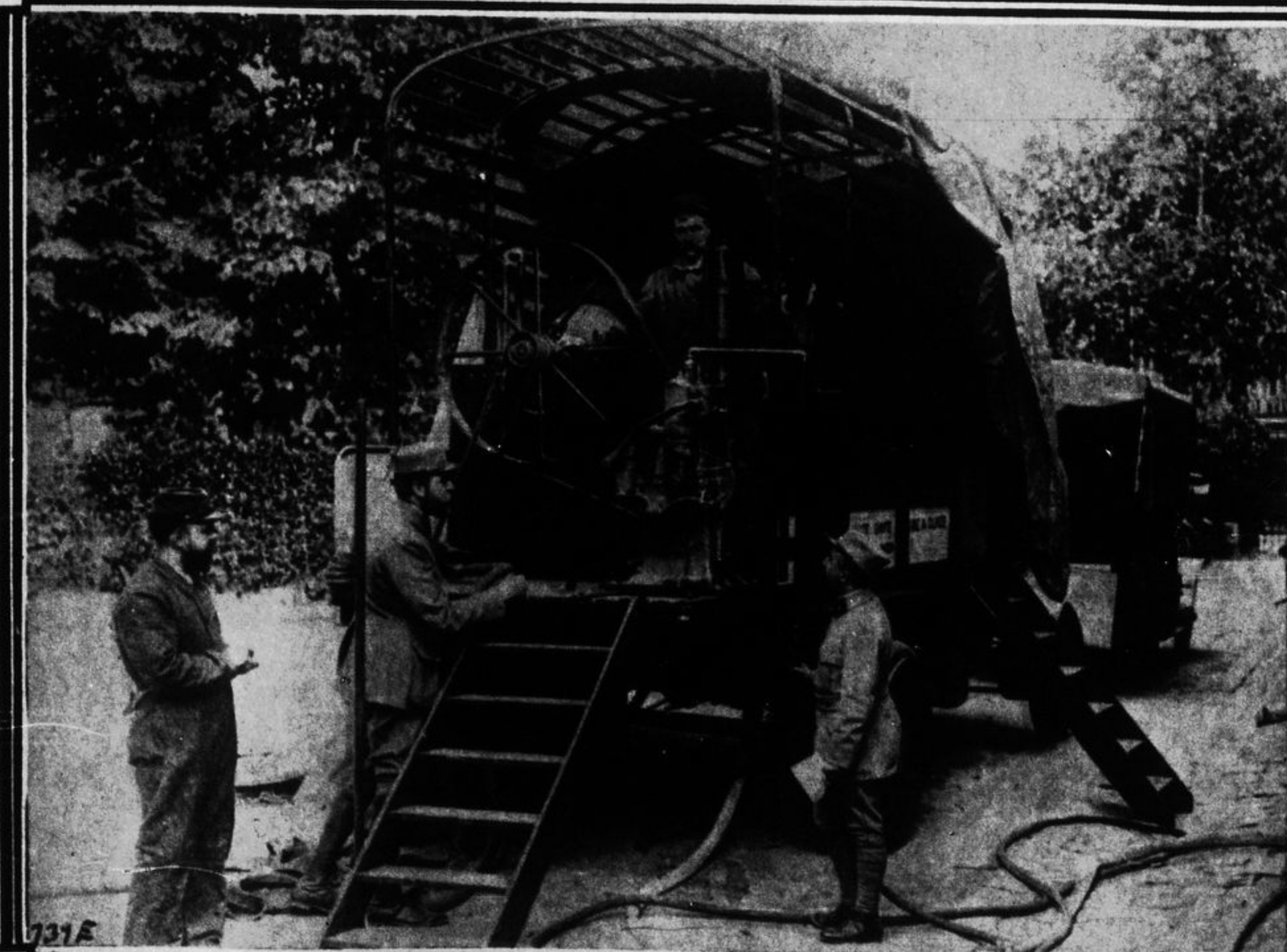
PONTOON BRIDGE BLOWN UP ON THE ISONZO.

As is customary in warfare, all means of retreat and advance are destroyed by the enemy whenever possible. Photo is a striking illustration of the actual blowing up of a bridge of the pontoon type which crossed the Isonzo River.



BIDDING GOOD-BYE AND GOOD LUCK TO THE RANGERS AND LONDON SCOTTISH

A scene at the railroad station at Mertlake, in Surrey, England, on the Thames above London, when the Rangers and London Scottish left for the front.



AN OASIS FOR THE WOUNDED.

Photo shows one of the newly installed machines for making ice, now being used by the French Army to manufacture ice for the victims of shells and fever.



COMMANDER'S HEADQUARTERS IN THE CHAMPAGNE.

Photo shows the unusual care gone to in protecting the person, etc., of the leader of men whose responsibilities are greater than those combined of many under-officers. Were headquarters to be destroyed by a too-well directed shell, confusion would reign, perhaps fatally. Thus the cause for the ingenious methods of protection.