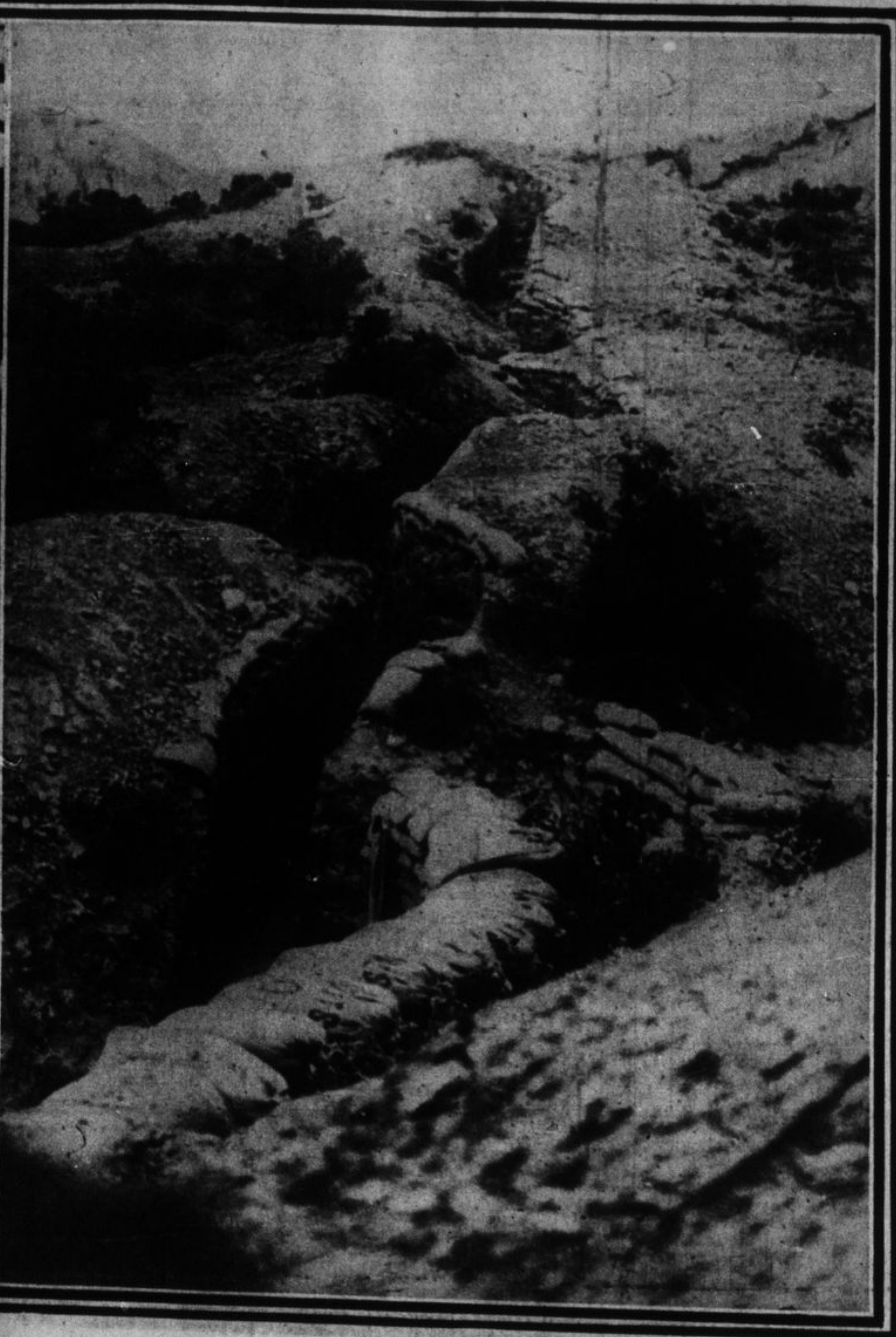




FRENCH COMMUNICATING TRENCH FILLED WITH WATER, BRIDGED TO PERMIT PASSING OF SOLDIERS. This is a French communicating trench, which was filled with water almost waist high. In order to permit of its use it was necessary to erect a bridge of boards for almost its entire length.



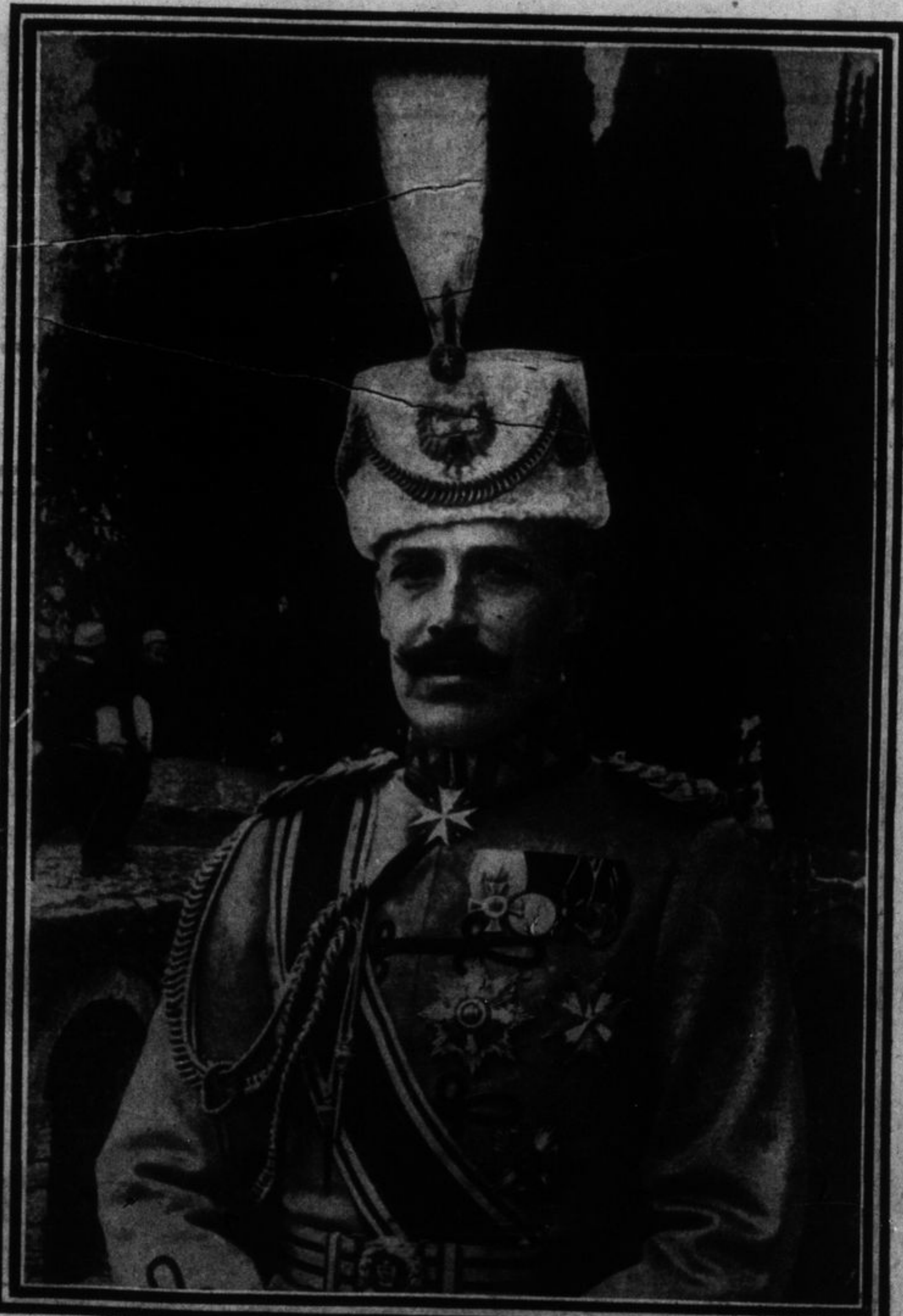
SOME OF THE LAST PHOTOGRAPHS FROM EVACUATED GALLIPOLI. A long winding communication trench, protected against snipers by sand bags, along which the great retreat from the peninsula was made.



AUSTRIAN INFANTRY TRENCHES IN A SWAMP. Trenches of an Austrian infantry regiment in a swamp. The trenches have been built on top of the ground instead of dug in because of the fact that water was found a few inches below the surface.



View of the Damascus-Jerusalem Railroad. This road, which is single track, is the only connection between the two points, and over which it will be necessary for the Germans and troops of the Central Powers to transport themselves and supplies should they attempt an attack upon the Suez Canal.



King William of Wied, whose reign in Albania has been exceedingly tumultuous from the day he took the throne, plans with the aid of Germany and Austria, to make a triumphal re-entry into Durazzo. King William abdicated in 1914.

20--Military Matters, World of...
Hilswalte, secretary to the vice-pres...
dent. the left of the picture.