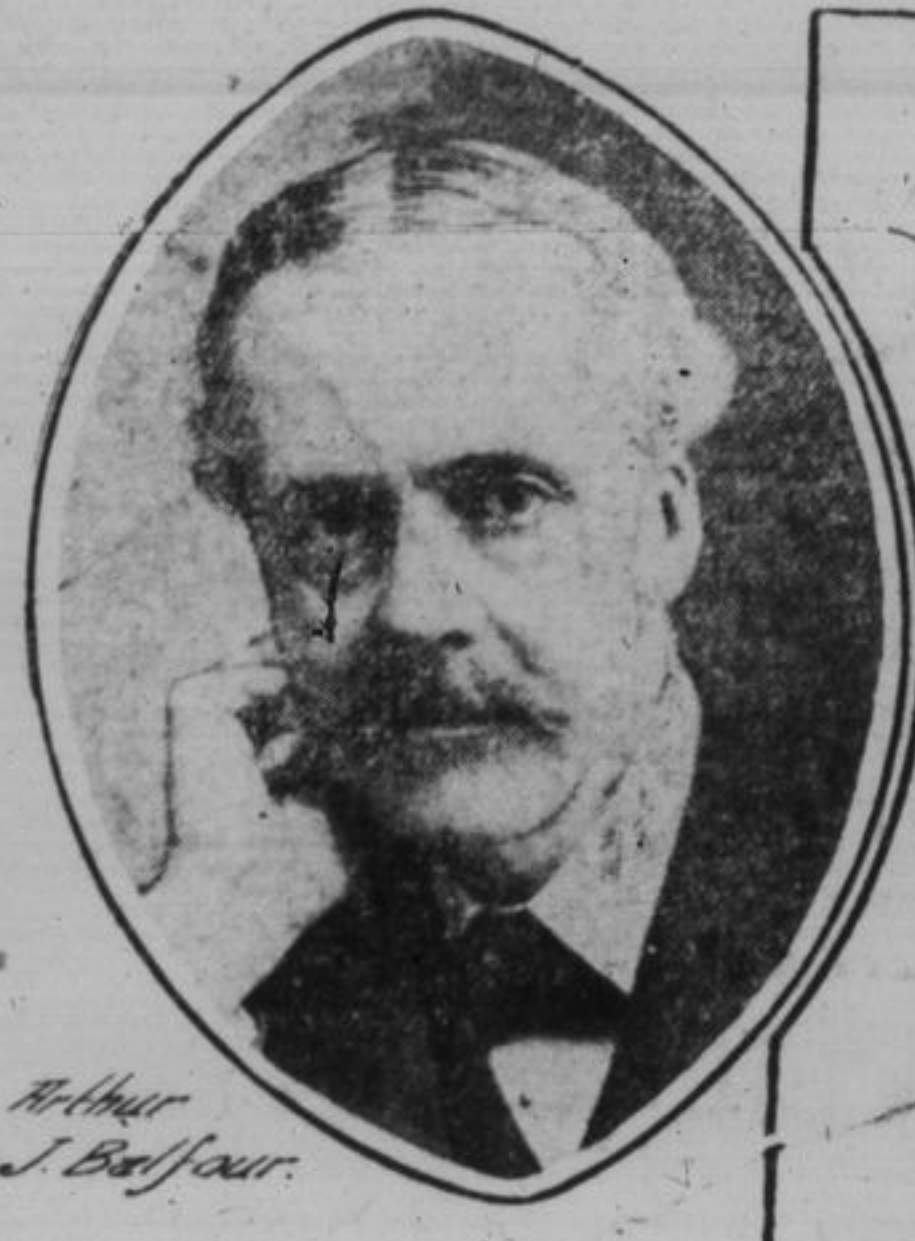


IRELAND'S CONGESTED DISTRICTS



GIRL WAS A THIEF MADE A BUSINESS OF ROB- BING HER MISTRESSES.

Thirty New York Women Identify Theresa Smith As Woman Who Robbed Them After Brief Term of Service—Thefts Net \$40,000.

New York, Aug. 3.—Theresa Smith, twenty-two years old, who was convicted on one of four indictments for grand larceny, did a big business as a dishonest servant, who was found guilty of the theft of \$650 worth of jewelry from Mrs. Gertrude L. Glass, of St. Nicholas avenue, on April 7th last. Since her arrest on May 9th thirty women have visited the Tombs and identified her as the woman who robbed them after a brief term of service. One recovered her wedding ring.

Theresa maintained a comfortable apartment at her home, paying a servant \$22 a month to care for the house and her baby while she herself took service in the city.

According to Assistant District Attorney Whitehead she has to her credit the netting of something like \$40,000. She was remanded for trial on the promise that if she did not give the necessary information for the recovery of property she had pawned, the judge would give her the limit of ten years.



Key to Map—Shaded parts show congested districts. Area of Ireland, 205,244 acres. Area of congested districts, 56,733 acres. Proportion of congested district to whole island, 27.6%. Population of Ireland (1901) 4,453,175. Proportion of congested districts 525,123. Proportion of whole population, 11.9%.

The shaded parts of the map indicate the congested districts which it appears are not congested in the sense of density of population. The population is dense however measured by the productive powers of the districts. When Mr. Balfour was chief secretary for Ireland he established the congested districts board. The Earl of Dudley is chairman of a Royal Commission which after two years of investigation implores the work of the board and urges that it be granted wider powers.

Georgia. I desire to say that this preacher is a willful, malicious, reckless, malignant and vicious liar.

Anderson sat down, and Representative Wade, a minister of the same church which brought on, astonished everybody with these words: "I was astounded and insulted to hear the slander heaped upon a woman who professes to be a minister of the gospel. I am a missionary Baptist preacher. I believe in and practice temperance, but do not believe in prohibition. In the name of all good Baptists, however, I want to rescind this attack upon Mr. Anderson by a long-haired, loud-mouthed, itinerant preacher who has done more harm to the temperance cause than all the brewers and distillers in the world."

G.T.R. At The Exhibitions.
The general advertising department of the Grand Trunk railway system has recently concluded arrangements for the general fall exhibitions. At the Canadian National exhibition at Toronto, the Grand Trunk building will be used, and one of the finest exhibits that the Grand Trunk has ever got out will be installed. In addition to a number of new features, some very large and most artistic photographic reproductions will be shown, as well as a complete collection of the Canadian forests and waters. The Grand Trunk Pacific will also be represented by a display of products from the wheat fields and the mixed farming sections of Western Canada. At the Eastern Townships exhibition at Sherbrooke a large space has been secured as well as at the Central Canada exhibition at Ottawa, where the Grand Trunk will be thoroughly represented.



The Earl of Dudley.

LABOR DISPUTES IN 1908.

Nearly 30,000 Working Years Lost in Great Britain.

London Standard.

G. R. Askwith, K.C., permanent secretary to the board of trade, in the twenty-first annual report of the labor department on strikes and lock-outs in the United Kingdom in 1908, and on conciliation and arbitration boards, says that the amount of industrial disturbances caused by trade disputes was greater in 1908 than in any year since 1898. Three disputes—those of the engineering and shipbuilding industries on the northeast coast and in the cotton spinning industry in Lancashire—accounted for this. They laid idle 160,000 people, and caused the loss of eight and a quarter working days—the number of workpeople involved in all the other 296 disputes being 129,000, and the working days lost two and a half millions only.

Of 399 disputes which began in 1908 57 directly involved 157,841 workpeople, or 70 per cent of the total involved in all the disputes of the year, were brought to a close by conciliation, or by reference to arbitration. Mr. Askwith says: "It is satisfactory to note the increasing use that is being made of methods of conciliation and arbitration. The shipbuilding dispute led to a series of conferences, as a result of which machinery was set up early in 1909 for dealing with differences between employers and workpeople in this industry, while in the engineering trade and in the cotton industry similar arrangements are being considered."

A TARIFF ARGUMENT.

Senator's Speech Concerning His Own Suit.

Chicago News.

Senator Warren's blue serge suit was a subject of much remark through the western controversy. He described it to the senate, saying the amount of wool in it weighed less than three pounds, that the cloth it cost a little more than \$1, that the making of the suit cost \$30, and the findings used cost \$12.50, so that the suit cost more than \$40, though the cloth cost only \$1. From this he argued that the protective tariff on the suit was not more than \$1.33. "I submit," said Warren, "that the cloth is good enough to wear even in the august presence of the senate. I ask the senator if I am not right." "Let it be," responded Dobbins, with whom the Wyoming senator was in colloquy, "that the senator does not require a very elaborate suit of clothes to present an impressive appearance in the senate."

It is the weak nerves that are crying out for help. Then help them, don't drug the stomach or stimulate the heart or kidneys. That is wrong. Vitalize these weak inside nerves with Dr. Shoop's Restorative and see how fast good health will come to you again. Test it and see. Sold by all dealers.

The strain of the trial at White Plains, N.Y., is telling on Thaw. District Attorney Jerome is turning up a pile of unsavory evidence.

Gibson's Red Cross Drug Store makes a specialty of "good tooth brushes." The kind that won't wear out are sold there.

Selfishness is the seed and sin is the harvest.

ON THE PLUSH CUSHIONS.

A Child's Idea About Travels of a Horse.

Woman's Home Companion.

The family horse who rejoiced in the eminently proper equestrian name of Dobbin, had earned a rest by long service, and was accordingly sent away to the country to spend his declining years in the broad pastures of a farmer friend of his owner. The distance being somewhat excessive for his rheumatic legs he was shipped to his new home by rail.

Little Edna, the family four-year-old, viewed the passing of Dobbin with unfeigned sorrow. She sat for a long time gazing disconsolately out of the window. At last, after a deep sigh, she turned with a more cheerful expression, and said: "Did old Dobbin go on the choo-choo cars, mamma?"

"Yes, dear," answered her mother.

"A broad grin spread over the little girl's face. "I was just thinking," she said, "how funny he must feel sitting up on the plush cushions."

The German army last week added to its forces nearly 2,500,000 trained and disciplined sharpshooters.

BEAVER FLOUR

ONE FLOUR FOR ALL BAKING

- the Bread Flour
- the Biscuit Flour
- the Cake Flour
- the Pastry Flour
- all four in the original

Ontario Blended Flour—always the same.

"Beaver" Flour

We make Sunshine Furnace fire-pot in two sections—so constructed with fins that they throw off every unit of heat, so constructed with straight walls that it is impossible for ashes to gather and intercept the heat, and so constructed that the upper section can expand independent of the lower, thus making it impossible in a Sunshine Furnace for any heat to loaf around the fire-pot, any heat to be nullified by ashes, any cracks to take place as a result of the shock following contraction or expansion.

This fire-pot has greatest weight & longest life. The fire-pot naturally bears the brunt of a furnace's work, and it bears it just in proportion to its original strength!

SUNSHINE FURNACE

Because steel is more powerful than gray iron, we make Sunshine Furnace firepot of semi-steel. This is an exclusive feature, and indicates that in Sunshine Furnace firepot alone you find smooth-as-glass surface, secure maximum fire-resisting strength, can rely on only minimum disintegration and can be assured of long life.

McClary's
Lemmon & Co., Kingston.

Gas Stoves!

The "Chicago Jewel" is The Key of Economy

The latest improvements on the "Chicago Jewel" are the Flame Reflector and Valveless Oven Burner-Lighter. Two features on the "Chicago Jewel" which are not on any other gas stove made. Examine them before purchasing. They are acknowledged the best manufactured.

ELLIOTT BROS., 77 PRINCESS ST.

Sales Summer Furniture

- Camp Cot, \$1.50 to \$2.50 each.
- Mattress to fit, \$1.50 to \$2.50 each.
- Double Swing, seat 4 people, \$6.50 only.
- 1,000 Islands, \$3.50.
- Camp Stool and Chairs, 50c. to \$2.50.
- Lawn Benches, to seat 4.
- Camp Table Fold, 4 inches square, for Motor Boat, \$1.50 each.

Robert J. Reid, 250 Princess St. Private Ambulance. Phone 577.

Eddy's Toilet Papers

CHEMICALLY PURIFIED

OFFER YOU More of Better Toilet Tissue for the Same Money than any other make on the market.

Made in Every Known Form and Variety and Every Sheet Guaranteed Chemically Pure.

Insist on Having Eddy's.

Always, Everywhere in Canada, Ask for Eddy's Matches.

KINGSTON & PEMBROKE RAILWAY

IN CONNECTION WITH Canadian Pacific Railway

ALASKA-YUKON PACIFIC EXPOSITION
Seattle, Wash., June 1st to Oct. 16th, 1909.

Round Trip First-Class Tickets will be sold until September 30th, 1909, to VANCOUVER, B.C., VICTORIA, B.C., SEATTLE, WASH., TACOMA, WASH., PORTLAND, ORE., SAN FRANCISCO, CAL., LOS ANGELES, CAL. \$83.90 \$99.15

Good to return until Oct. 31st, 1909.

Next Homeseekers' Excursions
Will leave on Aug. 10th, 24th, Sept. 7th, 21st. Tickets good for 60 days. Full particulars at B. & P. and C. P. R. Ticket Office, Ontario St., Toronto, 50.

F. CONWAY, Gen. Pass. Agent.

BAY OF QUINTE RAILWAY.
Train leaves union station, Ontario street, 4 p.m. daily (Sunday excepted) for Tweed, Sydneyham, Napawan, Deseronto, Bannockburn and all points north. To secure quick despatch to Bannockburn, Maynooth, and points on Central Ontario, route your shipments via Bay of Quinte Railway. For further particulars, apply R. W. DICKSON, Agent, Phone No. 8.

GRAND TRUNK RAILWAY SYSTEM

SEASIDE EXCURSIONS.
Round trip tickets will be on sale August 9th, 10th, 11th and 12th, good to return until August 30th, at the following fares from Kingston to:

Charlottetown, P.E.I.	\$22.55
Halifax, N.S.	21.30
Kennebunkport, Me.	14.40
Little Metis, Que.	16.30
Old Orchard, Me.	14.05
Portland, Me.	13.80
St. John, N.B.	14.30
Summerside, P.E.I.	21.30

And to other points at rates in proportion.

Alaska Yukon Pacific Exposition.
Round-trip first-class tickets will be on sale daily until September 30th, good to return until October 31st, from Kingston to:

VANCOUVER, B.C.	\$83.90
VICTORIA, B.C.	
SEATTLE, WASH.	
TACOMA, WASH.	
PORTLAND, OREG.	

Going via any direct route, returning via same or any other regular direct route.

SAN FRANCISCO, CAL.	\$99.15
LOS ANGELES, CAL.	

Choice of routes to San Francisco, returning via Portland, Oregon and any regular direct route therefrom or vice-versa.

For full particulars, apply to J. P. HANLEY, Agent, Corner Johnson and Ontario streets.

Quebec Steamship Company LIMITED.

River & Gulf of St. Lawrence

Summer Cruises in Cool Latitudes

SS. "Trinidad," 2,600 tons, with all modern comforts.

SAILS FROM MONTREAL ON MONDAYS, at 4 p.m., 2nd, 15th, 29th August, and 13th September, for Picout, N.S. calling at Quebec, Gaspé, Mal Bay, Percé, Grand River and Charlottetown, P.E.I.

BERMUDA

Summer Excursions, \$20 to \$30, by the Twin Screw "Bermudian," 5,500 tons, at 11 a.m., 7th, 14th and 28th August, and every 10 days thereafter from New York. Temperature cooled by sea breezes seldom rises above 80 degrees.

The finest trips of the season for health and comfort.

ARTHUR AHERN, Secretary, Quebec. For tickets and staterooms apply to P. HANLEY, 8 King Street East, RICK, Ticket Agents, Kingston, Ont.

Thousand Island and St. Lawrence River Steamboat Companies

In connection with the New York Central and Hudson River R. R. Co.

Leave Kingston daily, except Sunday, 6:00 a.m. and 2:00 p.m.

Leave Kingston, Sunday, 7:30 a.m., and 2:00 p.m.

Making direct connections at Cape Vincent to and from all points in New York State. Through sleeper Cape Vincent to New York.

Week end round trip rate, Kingston to Watertown, good going Saturday or Sunday, returning Monday, \$1.65.

For excursions to Brockville and Ogdensburg and the Thousand Islands, see local advertisements.

Lake Ontario & Bay of Quinte Steamboat Co., Limited.

STEAMERS

North King & Caspian

1000 Islands—Kingston—Rochester.

Commencing June 27th, steamer leaves for 1,000 Islands, Alexandria Bay and Gananoque at 10:30 a.m., daily, except Monday. Returning, steamer leaves at 5 p.m., for Bay of Quinte Ports and Port of Rochester, N.Y.

ST. LAURENCE—Leaves on Mondays at 5 p.m., for Picton and intermediate Bay of Quinte ports.

Full information from E. E. HORSEY, J. P. HANLEY, General Manager, C. S. KIRKPATRICK, Kingston, Ont. JAS. SWIFT & CO., Agents, Kingston.

THE FRONTENAC LOAN AND INVESTMENT SOCIETY

ESTABLISHED, 1863.

President—Sir Richard Cartwright. Money loaned on City and Farm Properties, Municipal and County Debentures, Mortgages purchased. Deposits received and interest allowed.

S. C. McGUI, Managing Director, 87 Clarence street.

STR. ECELWAT

Will start regular trips to Kingston Mills, June 12th. Leave Crawford's Wharf, foot of Princess street, 10 a.m., return 12 a.m. Leave 2 p.m., return at six. Return fare, 25c. Children half fare.

CAPT. L. WHALEN, Captain.

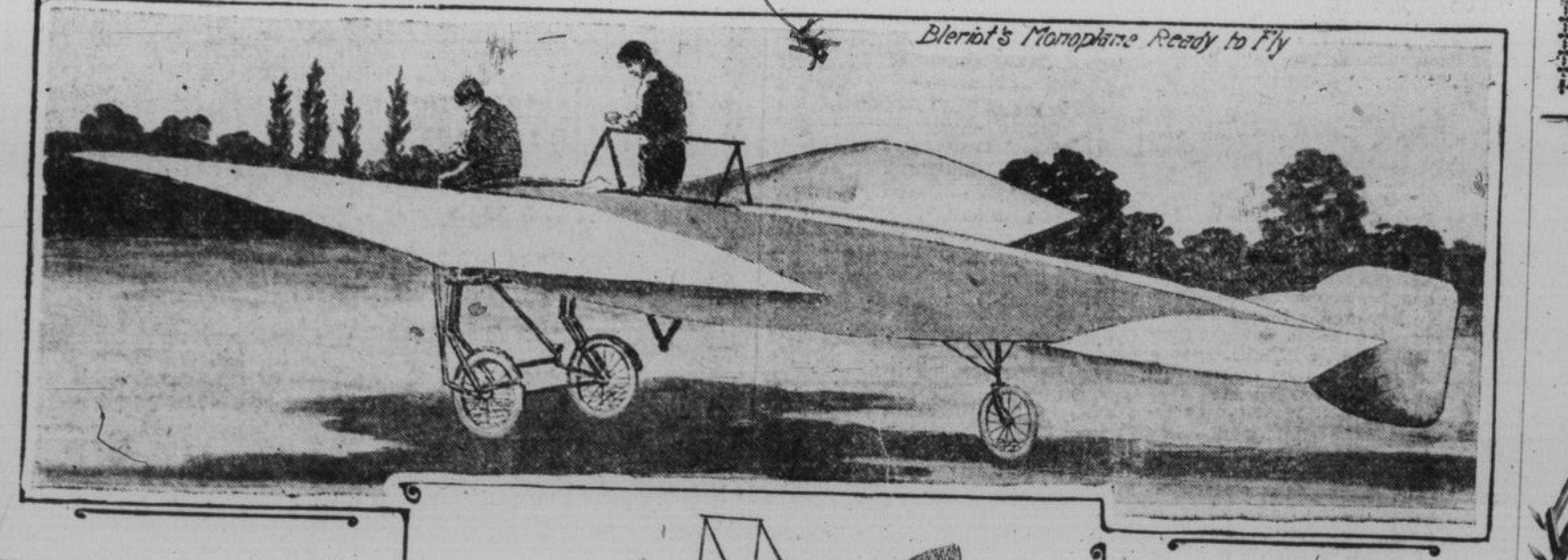
Wall Paper

Border, Ceiling and Side Wall, all same price, at

FRASER'S, 78 William St.

The trouble with the average man is that he isn't honest with himself.

BLERIOT'S AEROPLANE WHICH CROSSED THE ENGLISH CHANNEL

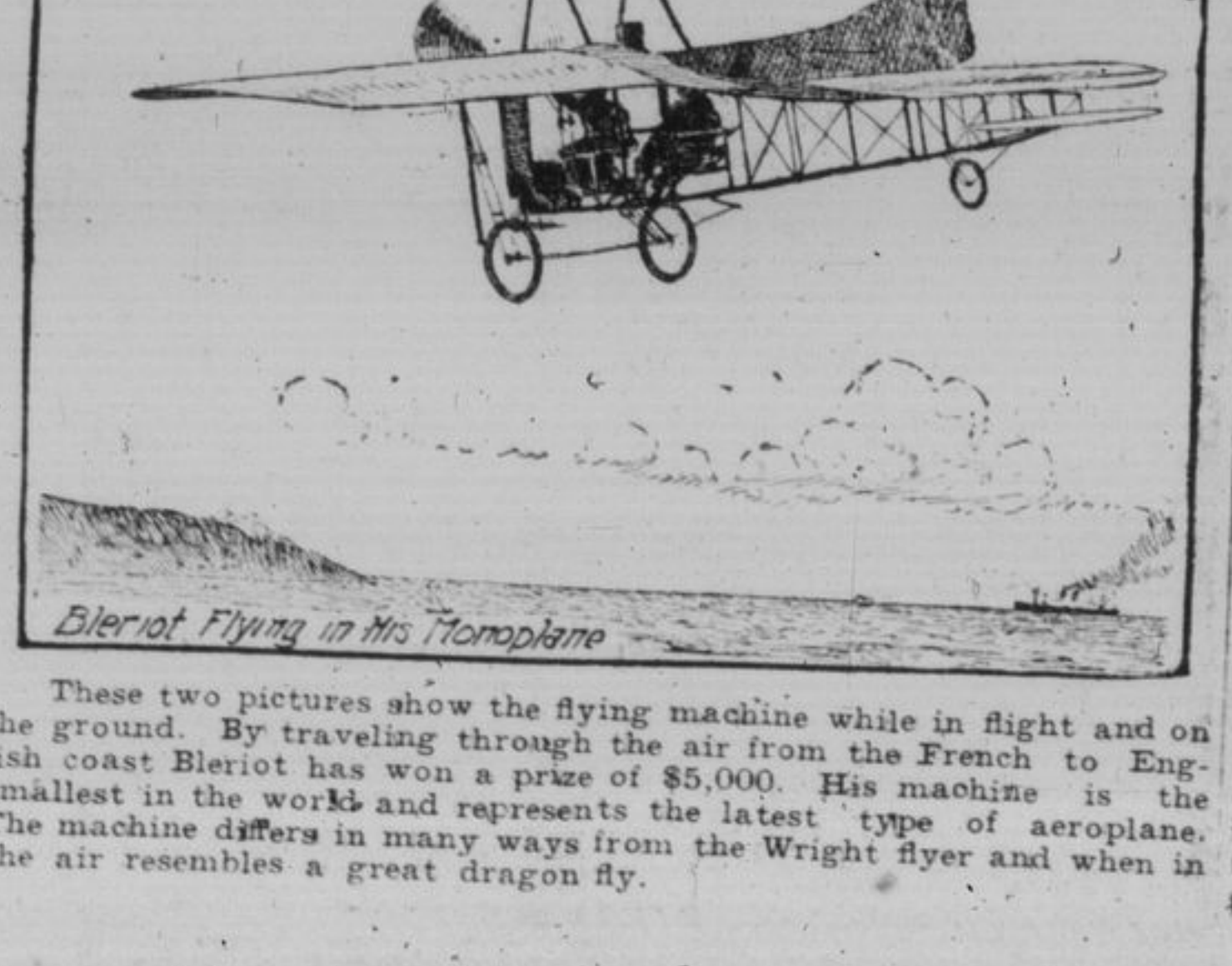


QUEER HERO THIS.

Laid Her First Egg on Top of Pole.

Kennebec Journal.

Zenas Dudley, of Hampden, has a hen that will lay every day providing she can lay where she wants to, and that it is sitting on top of a pole. The only reason why this hen wishes to perch on the tip end of a pole when laying can be accounted for only by the fact that she laid her first egg on top of a pole. When she was a small pullet she was frightened one day and flew to the top of a tall pole in the yard. The dog kept her there for some time, and during the time she laid her first egg on top of a pole. She has been on the top of some pole since her first egg. Never a time since then has she been set up in the hen yard, where this hen egg makes her daily layings. A small net bag is placed around the pole to catch the eggs.



MAN PAINFULLY BURNED.

While Handling Gasoline Employee Lighted Match.

Rochester, N.Y., Aug. 3.—Jacob Kellie, an employee of the Sworts Produce company, at Dundee, Yates county, tried to fill a five gallon tank with gasoline in the storage plant. He struck a match in order to see where a funnel was. After he had hurried out of the building painfully burned, the flames destroyed the plant. Loss \$6,000.

Eczema's Awful Itch.

It burns—it bites—makes you scratch—sleep you cannot, because eczema is as lively at night as by day. But cure is possible—lasting cure that comes with Dr. Hamilton's Ointment. It soothes, heals and cures you quickly. Give up experiment and use Dr. Hamilton's Ointment, which is guaranteed for the worst cases. Sold by all druggists, 50c. per box.