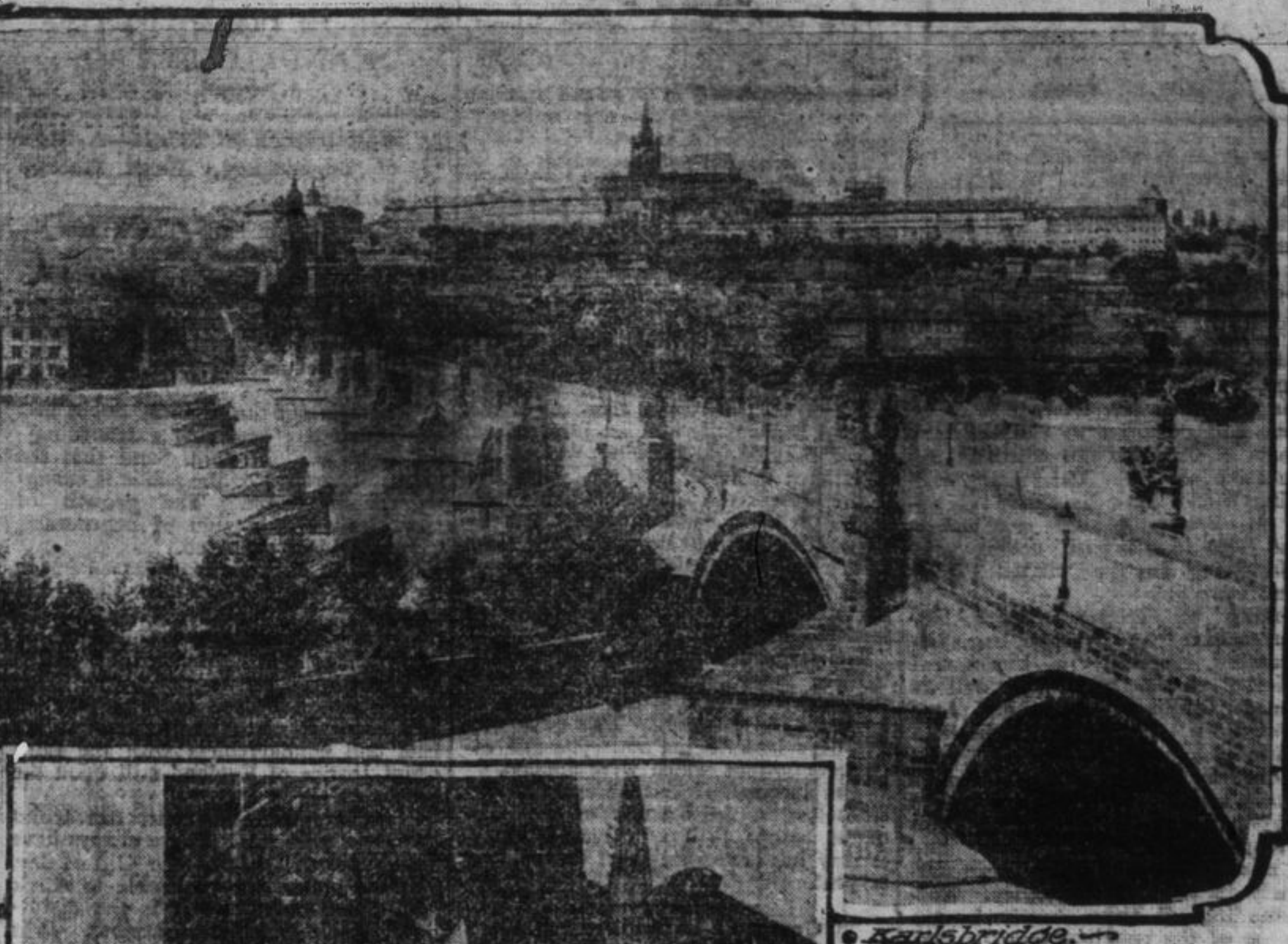


SCENES IN PRAGUE, BOHEMIA'S HISTORIC CAPITAL.



St. Nicholas Church



Rembride



Restaurants and Cafes

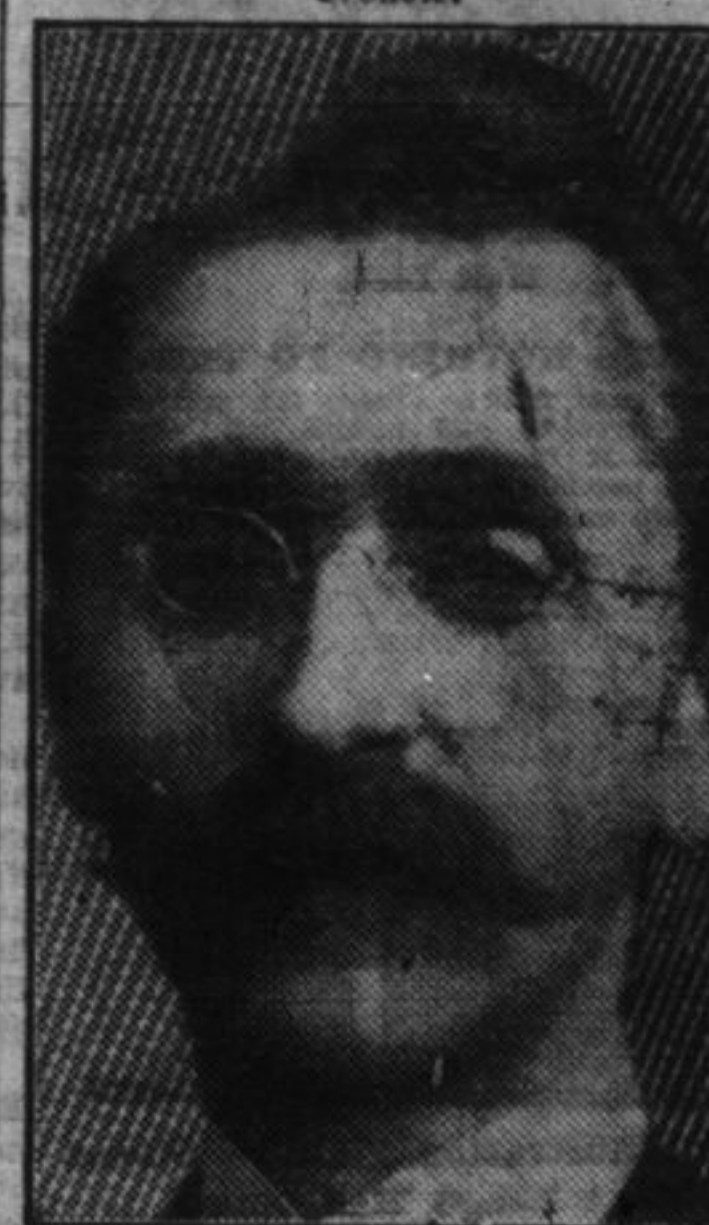
Prague, Aug. 10.—That Prague, the romantic and picturesque capital of Bohemia, is fast becoming an attraction for American tourists...

and their associations sacred Hradcany, majestic Vysehrad, the heights of Zbirov, the slopes of Vysehrad and Proskop, the slopes of Vysehrad...

Prague, Aug. 10.—That Prague, the romantic and picturesque capital of Bohemia, is fast becoming an attraction for American tourists...

STOMACH INDIGESTION.

Peruna Strikes at the Root of the Trouble.



MR. S. J. MASSEY, formerly a resident of Toronto, and a well-known business man, writes from 247 Guy Street, Montreal, Quebec:

"I wish to testify to the good results I have derived from the use of Peruna. Having been troubled for several years with catarrh of the head, I decided to give Peruna a fair trial and I can truly say I have received great benefit from its use."

"I have also found Peruna a very valuable remedy for stomach trouble and indigestion. I have no hesitancy whatever in recommending Peruna as a reliable catarrh remedy."

There are several kinds of indigestion. The trouble may be due to sluggishness of the liver, derangements of the bowels, enlargement of the pancreas, or it may be due to the stomach itself. In nearly all cases of stomach indigestion catarrh of the stomach is the cause. The only permanent relief is to remove the catarrh.

KINGSTON & PEMBROKE RAILWAY

IN CONNECTION WITH Canadian Pacific Railway Low Rates to Pacific Coast and Return Good Returning Until October 31st

VANCOUVER - \$95.80 VICTORIA - \$95.80 PORTLAND - \$95.80 SEATTLE - \$95.80

MOOSE Open Season.

New Brunswick September 15th - November 30th Nova Scotia October 1st - November 30th Quebec September 1st - December 31st

Write General Passenger Dept. INTERCOLONIAL RAILWAY MONCTON, N.B. For free copies of "Moose in the Micmac Country" "Fishing and Hunting."



Cardinal Archbishop of Baltimore

FINE ALASKAN WHEAT

YANKEE FARMER MAKES A STARTLING DISCOVERY.

Heavy Storms Had No Effect on This Wheat—Gives 200 Bushels to the Acre. In 1903 Abraham Adams, a native of Kentucky, who had gone to the great West to farm, it was taken with a desire to try his fortunes in Alaska.

Results in Other Sections. Mr. Adams had his fields surveyed and has absolute proof of the yield from each field. He has tried his wheat in other lands, and in some places it did better than in Idaho.

Surprising Results. In the fall of 1906, the 1,545 pounds were planted in fields by the side of the famous Blue Stem and Club wheat grown on that section.

Henri Farman, the noted French aeronaut, will continue this fall to give demonstrations of the marvelous aeroplane which he brought to this country with him.

IRISH WHISKEY DISTILLERS TO HIS MAJESTY THE KING Sir John Power & Son Ltd. ESTABLISHED AD 1791. THREE SWALLOWS IRISH WHISKEY

WILSON'S FLY PADS Kill them all. No dead flies lying about when used as directed.

Playfair, Martens & Co. Members Toronto Stock Exchange Canadian Northern Ry. Bldg., Toronto, Canada Special attention given COBALT STOCKS

Every Woman is interested and should know about the wonderful MARVEL Whirling Spray

CORNS CURED IN 24 HOURS on painlessly remove any corn, either hard, soft or bleeding, by applying Putnam's Corn Extractor.

GRAND TRUNK RAILWAY SYSTEM Farm Laborers' Excursion To Winnipeg and points west via Chicago, on Aug. 22nd, Sept. 2nd, 11th, and 14th. Fare \$10.00.

LABOR DAY, Monday, Sept. 7th Return tickets will be issued to SINGLE FIRST-CLASS FARE, good going Sept. 4th, 5th, 6th and 7th, returning on or before Tuesday, Sept. 15th.

Lake Ontario & Bay of Quinte Steamboat Co. LIMITED. KINGSTON, ROCHESTER. 1,000 ISLANDS

Sirs. NORTH KING. Commencing June 27th, leave Kingston for Thousand Islands every except Monday at 10:15 a.m.

ALLAN Royal Mail Line Montreal to Liverpool. TUESDAY - Sept. 1, Oct. 2, Victorian sails - Sept. 11, Oct. 8, Corsican sails - Sept. 18, Oct. 16, Virginian sails - Sept. 25, Oct. 22.

STEAMER WOLFE ISLANDER LEAVES WOLFE ISLAND - MON. 7:30-9:15 a.m. 1:00-4:00 p.m. TUES. 7:30-9:15 a.m. 1:00-4:00 p.m.



She gave a fine reception to the officers of the United States Army at Hawaii.