

LEGISLATIVE ASSEMBLY FOR RE-ELECTION EDW. J. B. PENSE.

Provincial Election.

To The Electors of Kingston and Portsmouth: GENTLEMEN—I respectfully solicit your votes and influence in securing my return as representative in the ensuing legislature.

Synopsis of Canadian Northwest HOMESTEAD REGULATIONS.

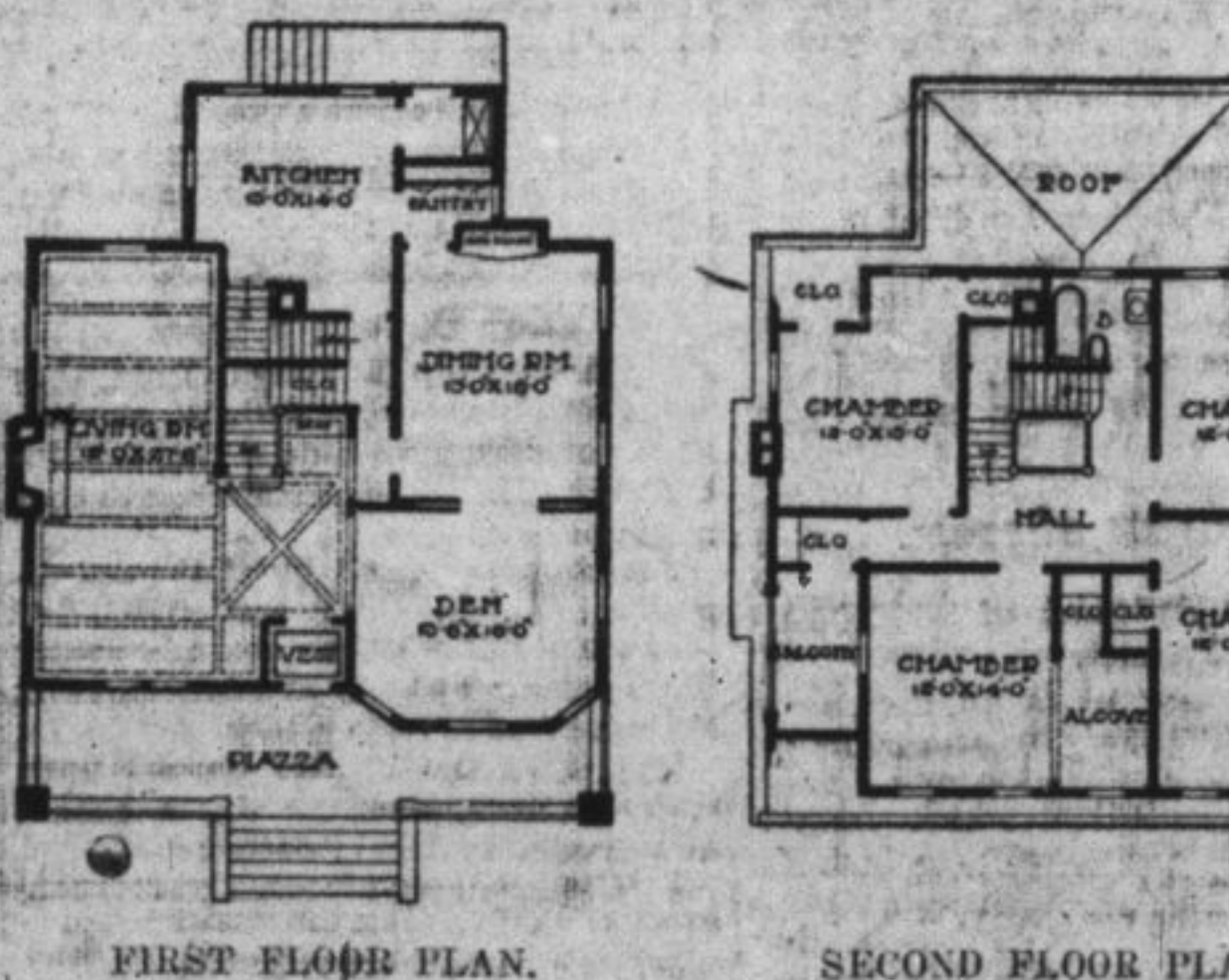
ANY seven-numbered section of Dominion Lands Agency or Manitoba or Northwest Provinces, excepting 80 and 80 reserved, may be homesteaded by any person the sole head of a family, or male over 18 years of age, to the extent of one-quarter section, of 160 acres, more or less.

A HIGH PITCHED GAMBRIL ROOF AFTER THE HOLLAND TYPE.

Designed by Charles S. Sedgwick, Architect, Minneapolis, Minn.



The peculiarities of this design are the extremely high pitch of the gambrel roof and the treatment of the front with the low-timbered cornice on both sides with heavy timber carrying across the piazza, supported brackets resting on rugged stone piers built of native field stone.



CLUNY'S GRAVE

Where Bonnie Prince Charlie Was Contained After Culloden. To the tourist the romantic Badenoch district presents attractions of rich historical interest.

In the mighty mountain mass of rock which forms the western extremity of the stern and rugged Craig Lhu, from which the war-sky of the Macphersons is taken, one can still see the grave where Cluny, of the 45, famous in song and story, lay concealed after the disaster of Culloden.

When it is remembered that the chief's hiding place was known to upwards of one hundred persons, there can scarcely be found among the heroic and devoted acts which have been performed under the influence of the most sacred principles of loyalty, one more worthy of admiration than this display of fidelity.

The cave, which opens in the precipitous and sharply cut face of the rock, was dug during the night by his own people, and the excavated material was deposited in Loch-an-Ovie, a small lake at the foot of the hill, in order that no vestige of their labor might appear, and lead to the discovery of the retreat.

At that period it must have been some twenty-five or thirty feet in length, and four or five feet wide, with sufficient height for a medium-sized man to stand upright. The entrance to this strangely-devised chamber is concealed by a huge ledge of rock, which would completely deceive any stranger who was not aware of its existence.

These features in the rocky wall of the cave were cunningly converted into loopholes, which, owing to the fact that the interior of the cave was cleverly designed to run parallel with the almost perpendicular precipice, provided a very convenient means of observing the surrounding country. They commanded the only approach to the cave, and with one gentle touch the intruder could easily be precipitated hundreds of feet into eternity.

Many anecdotes are related of Cluny's ingenuity in eluding the vigilance of the military, but perhaps the most exciting was the incident in which he actually held the horse of the officer in command of the party who were in search of him.

"I do not know, and if I did I should not tell you," was the reply of the daring chief, who was rewarded by Sir Hector for his fidelity.

In this picturesque locality Prince Charles Edward Stuart spent a portion of the time he was a fugitive on "hills that were by right his ain," and in the company of Lochiel and Cluny enjoyed a modified sort of security such as he had not felt for a long time previously.

A woman who is weak, nervous and sleepless, and who has cold hands and feet, cannot feel and act like a well person. Carter's Iron Pills equalize the circulation, remove nervousness, and give strength and rest.

Is Your Scalp Itchy? Multitudes of minute creatures infest the skin and excite inflammation. It is not a question of cleanliness, for soap and water is powerless to reach the creatures. Dr. Hamilton's Ointment is death to them.

The Earl-Garbide Feed Acetylene Generator. Fully approved by fire underwriters. The feeding of Carbide is controlled entirely by the Gas Holder.

PURITY, BRILLIANCY, AND UNIFORMITY. CARLINGS ALE PORTER AND LAGER.

L. C. SMITH LEADS LIST. Big Dividends in Service. Public opinion is the L. C. Smith Typewriter, lead over all other writ.

EVANGELINE Ganong's G.B. Chocolates. Fancy Boxes or in Bulk, 50c per lb. Also STEWART'S FINE CHOCOLATES. A.J. REES, 166 Princess St.

THE 20th CENTURY TREATMENT, The source of all Power, discovered in the Laboratory of Dr. Jules Kober. The result of 50 years of scientific research.

HOUSE CLEANING MADE EASY By Using Our Furniture Restorer. Your labor seems in vain if you do not add something new from our well assorted stocks.

FIFTY-EIGHT SCHOOL FIRES. Record for First Three Months of the Year 1908. The Insurance Press, of New York, has kept a record of the fires in schools and other educational institutions during the present year.

CABS! The Old Stand and the Old Number 490. Office No. 1. All orders promptly attended to, night or day.

FIRE ESCAPES! All lengths, all sizes and to suit all conditions. Built to order and erected in place on short notice.

JAS. MULLEN, Granite and Marble Works. First-Class Work Guaranteed. Satisfaction Assured.

Wood's Great Peppermint Cure. The Great Peppermint Cure has been used in all parts of the world for over 50 years.

Backlog Into the Winter. Philadelphia Ledger. At an Atlantic City hotel there is an old Southern negro employed as a head waiter.

Heart Power. New York American. The weight of the blood expelled at each contraction of the left ventricle of the heart is about four ounces.

Curious Double Rainbow. Observer. "On March 14th last, while on the voyage between Jamaica and the Isthmus of Panama at 11 a.m., the sun being then nearly in the zenith, a double rainbow of brilliant coloring appeared, forming a complete circle round the sun.

Great Bridge Scheme. Technical World. In street-cars and the general congestion of inter-urban travel will be at an end if the invention of a New York man proves as successful as is anticipated.

Mild Epidemic Going Round. It is due to impurities in the water, causes diarrhoea and headache. Those who use Verilene get relief at once.

LIMERICK PRIZE. St. George's Baking Powder Limerick Prize Winner. The fifth of the weekly prizes of \$5 for the best line sent in each week for St. George's Baking Powder, Limerick, has been awarded to Miss Christine Davis, 71 Marlboro street, Bradford, Ont.

Cast Up By The Sea. Kennebec Journal. They that go down to the sea in ships learn much of the mysteries of life. From the coast of Africa they travelled to Senborno, Mo., the point of an old-time sea captain of that town, who long years ago was lost with all on board his ship, in the China seas.

Alms From A Tomb. London Standard. A remarkable custom which has been uninterruptedly in force for 300 years has just been observed at Bedford, a secluded parish a few miles from Chislehurst. It is that of picking up alms from the donor's tomb in the churchyard.

James Reid's, The Leading Undertaker, Phone 147 for Repairing.