

YOUR CLOCK REPAIRED.

Now is the time to have your clocks looked after and properly put in order.

Possibly there is some little thing out of order that will only take a few minutes to repair, or it may need to be cleaned and regulated.

Our clockmakers are experts having had long and thorough experience.

We call for your clock and deliver it. All our work is guaranteed.

Kinnear & Esterre

Jewellers.

Phone, 336, 100 Princess St.

TRAVELLING.

KINGSTON & PEMBROKE RAILWAY

IN CONNECTION WITH Canadian Pacific Railway

Homeseekers' Northwest Excursions

Leave Kingston, Tuesday, April 28th, and every second Tuesday following until September 29th.

60 DAYS RETURN LIMIT

Second class round trip tickets at VERY LOW RATES

To all important Northwest points. Full particulars at K. & P., and C. P. Ticket Office, Ontario St.

F. CONWAY, Gen. Pass. Agents

RAY OF QUINTE RAILWAY

Trains leave Union Station, Ontario Street, 4 p.m. daily (Sundays excepted) for Tweed, Espanham, Kapuskasing, Deseronto, Hanoverton and all points north. To secure quick dispatch to Hanoverton, Kapuskasing, Espanham, Tweed, Ontario, routes your shipments via Ray of Quinte Railway. For further particulars, apply to H. W. MICKELSON, Agent, Phone, No. 8.

GRAND TRUNK RAILWAY SYSTEM

Homeseekers' Excursions to Manitoba and the Canadian Northwest and return, good going May 12th, 16th, June 9th, 23rd, July 7th, 21st, August 4th and 18th, good returning within two months of going date. The following are fares to some of the principal points:

Arctic - \$34.50 P. Albert - \$38.50
Brandon - \$33.50
Edmonton - \$42.50
Macleod - \$40.00
Moose Jaw - \$36.00

For reservations in the Tourist car and any other information, apply to

J. P. HANLEY, Agent, Cor. Johnson and Ontario Sts.

INTERCOLONIAL RAILWAY

Royal Mail Trains

From Montreal to Halifax

CONNECTING WITH Royal Mail Steamers

From Halifax to Liverpool

Canada's Famous Train

THE MARITIME EXPRESS

Leaving MONTREAL, Friday at 12.00 (noon) Express Passenger baggage and European mails, reaching the steamer's dock at HALIFAX the following Saturday afternoon.

SPECIAL TRAINS carrying passengers baggage and mails when inland steamers are not convenient, leaving HALIFAX immediately after the arrival of the steamer, making connections for Ottawa, Toronto, Detroit and points west.

FOR TICKETS AND FURTHER INFORMATION, apply to nearest GRAND TRUNK RAILWAY AGENT, or to

Montreal Ticket Office

141 St. James St.

ALLAN ROYAL MAIL LINE

Montreal to Liverpool

Cornwall, Fri., May 1, 9 a.m.
Kingston, Fri., May 8, 9 a.m.
Toronto, Fri., May 15, 9 a.m.
Victoria, Fri., May 22, 9 a.m.

Rates of passage and full information may be obtained from J. P. HANLEY, Agent, 27 St. George St., KINKPATRICK, Local Agent.

POTATOES

IN ANY QUANTITY

Wholesale or Retail, at

A. GLOVER'S, Cor. Bagot and Earl Sts.

When an estate becomes involved in litigation it soon ceases to be an estate.

DRESS-MAKERS



The nervous strain through which dressmakers have to pass at certain seasons of the year seems almost beyond endurance, and frequently brings on nervous prostration, fainting spells, dizziness, sleeplessness and a general breaking down of the feminine system, until life seems altogether miserable.

For all overworked women there is one tried and true remedy.

LYDIA E. PINKHAM'S VEGETABLE COMPOUND

restores the feminine system to a strong, healthy, normal condition.

Mrs. A. D. Trudeau, Amprion Ontario, writes to Mrs. Pinkham:

"I suffered terribly from ulceration of the feminine organs for eight years. I tried four doctors but got no relief, and thought I would have to die."

"Lydia E. Pinkham's Vegetable Compound has entirely cured me. I hope every suffering woman will take my advice and try Lydia E. Pinkham's Vegetable Compound."

FACTS FOR SICK WOMEN.

For thirty years Lydia E. Pinkham's Vegetable Compound, made from roots and herbs, has been the standard remedy for female ills, and has positively cured thousands of women who have been troubled with displacements, inflammation, ulceration, fibroid tumors, irregularities, periodic pains, backache, that bearing-down feeling, flatulency, indigestion, dizziness or nervous prostration. Why don't you try it?

Mrs. Pinkham invites all sick women to write her for advice. She has guided thousands to health. Address, Lynn, Mass.

MAGIC SODA



TRADE MARK
SODA
SALUBRITUS IS THE BEST.
E. W. GILLET COMPANY LIMITED
TORONTO, ONT.

Invalid Ladies This Is For You.

There are thousands of females who suffer untold miseries common to their sex.

This is largely due to the peculiar habits of life and fashion, and the improper training of girlhood. Then, too, the physical changes that mark the three eras of womanhood (the maiden, the wife, and the mother) have much to do with her sufferings, most of which are endured in silence, unknown by even the family physician and most intimate friends.

To all such whose hollow cheeks, pale faces, sunken eyes and feeble footsteps, indicate nervousness, palpitation of the heart, weak, faint and dizzy spells, we would earnestly recommend a course of Milburn's Heart and Nerve Pills.

Mrs. Joe Sharp, Brighton, Ont., writes: "I was troubled with palpitation of the heart, weak spells and nervous trouble, and found no relief until advised to try Milburn's Heart and Nerve Pills. I got six boxes and that helped me so much I got and got five more. I am now cured completely."

Milburn's Heart and Nerve Pills are 50c per box or three boxes for \$1.25, all dealers or mailed direct on receipt of price by The T. Milburn Co., Limited, Toronto, Ont.

To-day a more scientific method is used. The stain is washed; a few drops of the water used are poured into a tube containing some specific serum from a rabbit inoculated with human blood. When the addition of water produces in the serum a fine deposit, and gives a misty appearance to the liquid, one can be perfectly certain that the blood stains were human.

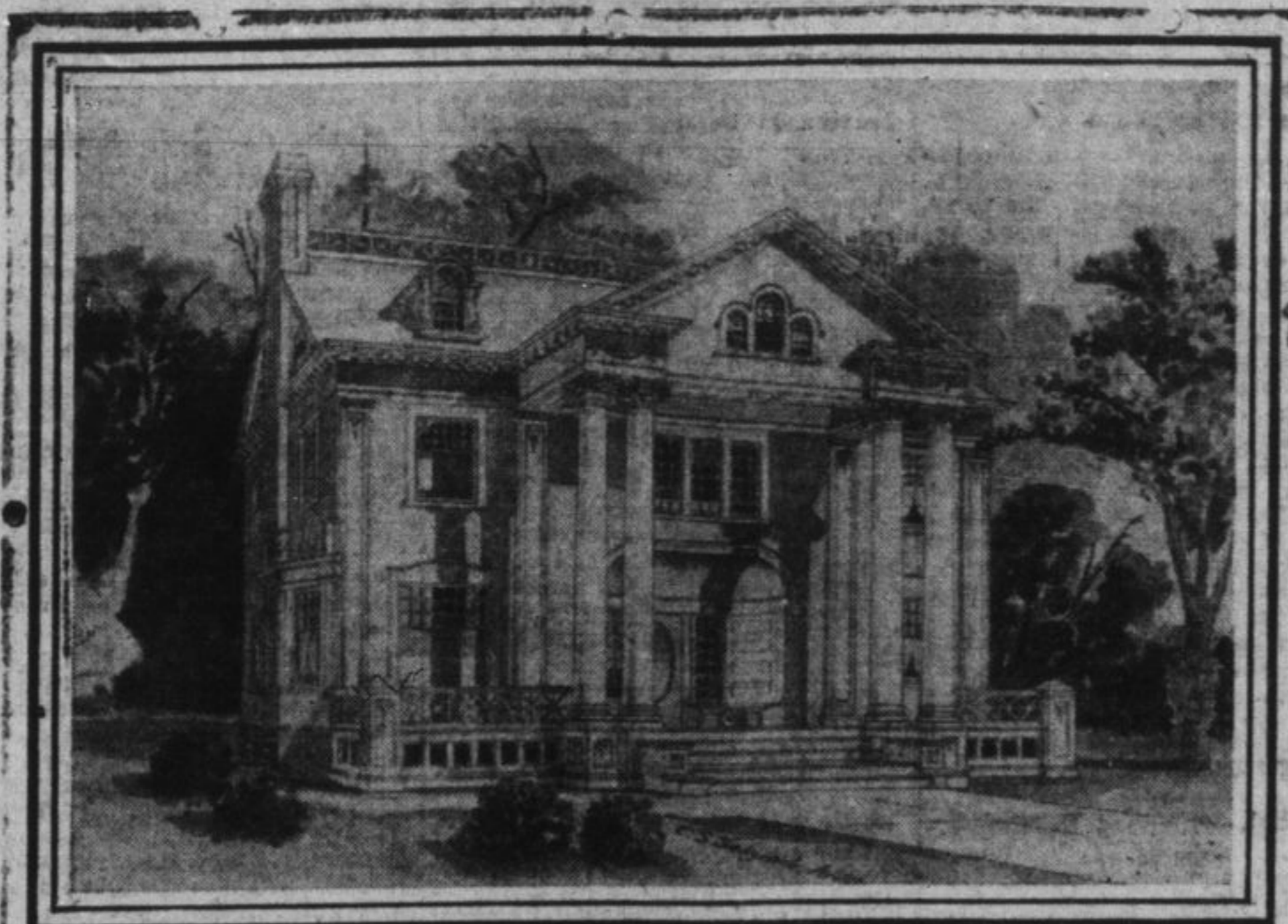
The estimated cost of the Roosevelt dam, which is part of the Salt river irrigation scheme, has been cut down by \$1,000,000 by the establishment of a government cement mill on the spot.

Religion that doesn't abide with a man twenty-four hours a day, and seven days a week, isn't worth having.

Examine the Trade Mark when you buy spoons, forks, knives, etc. 1111
"1847 ROGERS BROS."
You are sure of your money's worth in artistic patterns, style, finish and quality. SOLE LEADING DEALERS
Fishes, vases, dishes, etc., etc. of extraordinary beauty and wearing quality are made by MERIDEN BRISTOL CO.

A GEORGIAN TYPE OF COLONIAL.

Designed by Charles S. Sedgwick, Architect - Minneapolis, Minn.

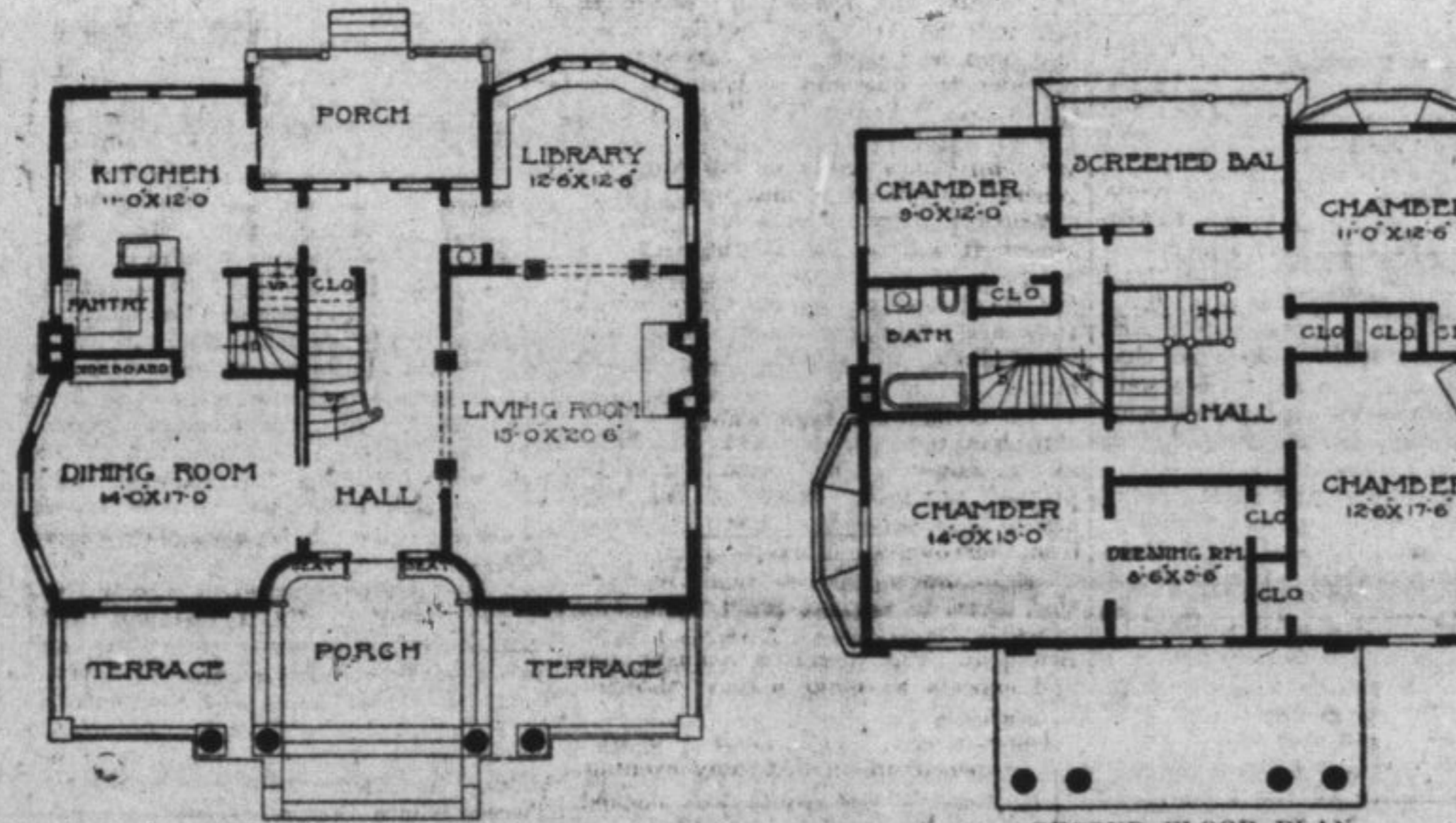


This is not a large house, although one might receive such impression from the appearance of the design. This illustrates the fact that by the treatment of detail on the exterior of a house the same building may be made to look large or small. The site of this house on the ground is 41 feet in width by 34 feet in depth, exclusive of the piazza.

The arrangement of the rooms is on the old colonial style, with a recessed entrance, seats on either side, give a very attractive appearance to the front, a colonial doorway, with side lights opening into a wide hall that

extends through the centre of the house from front to rear, with central door and windows opening out onto a rear piazza. This feature is one that is liked by nearly everyone. The dining-room is on the left of the hall, with passage way, pantry and rear stairs opening through to the kitchen. On the right is a large living-room, back of which is the library, opening well together with columned archways. There are four good chambers in the second story, provided with ample closets and bathroom and stairs leading to the third or attic story. The first story is finished in hard woods, oak-stained moss green in the dining-room and golden oak in the

living-room, white enamel through the entire hall and stairs, with red mahogany rail, the library finished in dark Flemish oak. The woodwork of the second story is white enamel. The treatment of the second story is symmetrical, with the outside chimney carried up in each gable. The central portico has four large ionic columns. The treatment of the window openings throughout is in harmony with the character of the house. The estimated cost of this house is \$8,000, exclusive of plumbing and heating. The roof will look best in a dark moss green color and the house painted either white or a light cream color.



CRIMINALS MEN OF SCIENCE

To Outwit Them Detectives Must Make Use of Modern Methods.

The methods employed by criminals have "improved." They have become scientific, most scientific. The criminal of to-day handles the chloroform, opium, morphia, with all the cleverness of a physician.

Again, the tools used by the modern jailbird are untrivial scientific pieces. One amazing proof of the scientific knowledge of the modern criminal and his keenness in keeping abreast of modern discoveries lies in the following fact: Recently at Marseilles, the huge safe of a bank was rapidly opened by means of a complicated apparatus which had only been invented by a prominent engineer ten months previously.

But the detective also avails himself of scientific discovery. Formerly in cases of forgery, for instance, a drop of water was placed on the forged words. If the paper had been scratched and its size removed, the water was immediately soaked in, if the paper had not been scratched, the drop remained for a while on the top. This process was a primitive and spoiled the document.

Nowadays the suspicious paper is photographed, and on the proof the marks of scratching are easily detected by clear differences in color. Photography is used also in the case of forgeries made by means of chemicals.

When a heap of burned documents is found in the fireplace thin sheets of glass are inserted between the burned papers. As soon as one sheet is on the glass, it is rendered less brittle by means of a special liquid and it is unfolded and photographed. The process is repeated with every respect, and after a few hours' all the documents are easily read.

A process formerly used for the classification of blood stains consisted in examining them under the microscope and from the appearance of the red globules the investigators would draw their conclusions as to the nature of the blood. Unfortunately this examination gave no result when the blood stains were not recent.

To-day a more scientific method is used. The stain is washed; a few drops of the water used are poured into a tube containing some specific serum from a rabbit inoculated with human blood. When the addition of water produces in the serum a fine deposit, and gives a misty appearance to the liquid, one can be perfectly certain that the blood stains were human.

The estimated cost of the Roosevelt dam, which is part of the Salt river irrigation scheme, has been cut down by \$1,000,000 by the establishment of a government cement mill on the spot.

Religion that doesn't abide with a man twenty-four hours a day, and seven days a week, isn't worth having.

GIRLS PAID HOMAGE

To Kipling When He Visited Stockholm.

Rudyard Kipling and his wife are just back from Stockholm, where the celebrated writer personally went to receive the Nobel prize in literature "for the best work of an idealist tendency" as the statutes of the Nobel foundation say. The prize consists of \$5,000 and a gold medal, and is a token of world-wide recognition.

Mr. Kipling is delighted with his trip to Sweden, a country of which he has known very little hitherto, but to which he has taken such a fancy that he intends to go there next summer. He was everywhere received with the utmost cordiality from the moment he put his foot on Swedish soil, and was agreeably surprised to find all his works so well known to everyone he met, young and old. Although the death of King Oscar prevented the great festivities in Stockholm which as a rule accompanied the distribution of the Nobel prizes, and in which the late king always took part with the liveliest interest, Mr. and Mrs. Kipling were entertained at several private banquets, and were the subject of the most flattering attention from many prominent people the day they were received by the new king and queen, and another day the famous painter and etcher, Anders Zorn, gave a reception in his studio in their honor.

But the most touching tribute of all was that which the schoolgirls paid Mr. Kipling. Five young girls from every girls' school, mixed school and seminary arrived one forenoon in procession at the grand hotel, and gathered in the grand salon, where Mr. and Mrs. Kipling were awaiting them. A girl of eighteen, Miss Backman, delivered a brilliant little speech in faultless English in the distinguished guests' honor, thanking Mr. Kipling for all the mighty impulses and great ideals he had given to youth in his books. After that a choir sang "Home, Sweet Home" and "The Swedens' Hail Thee, Thou Northern Land."

Rudyard Kipling is no orator, but deeply touched as he was, he could not let the occasion pass without expressing his heartfelt thanks to the young girls for their beautiful homage.

Had Prejudice Against Overcoats.

Baltimore American.

"My venerated grandmother looked at me rather scornfully when I approached her in my first overcoat, and I'll never forget the roasting she gave me for having one," said J. M. Bond, of St. Louis.

"She said that no sensible man would descend to the effeminacy of an overcoat, and that the effect of wearing one was to reduce vigor and the hardness that comes of battling with cold weather. She pointed to the fine example of a statesman with whom she had a personal acquaintance, the Hon. Hannibal Hamlin, elected vice-president of the United States with Lincoln, who in his whole career never put one on, no matter how low the mercury dropped."

A Burmese Bridge.

It is stated in the Pioneer Mail that the new road bridge across the Sittang was opened by the lieutenant-governor of Burma on November 5th. This is the largest and most costly bridge in the province and has involved an outlay of \$125,000. It consists of four central spans of 104 feet each, with land spans of 95 feet at either end. The girders were obtained in England and put together with pins, bolts and nuts, no riveting of any kind having been done on the spot. The construction and maintenance of the bridge and road will greatly facilitate access from Rangoon to the hill station of Lower Burma, and it will now be possible to reach Thagadung within twelve hours of leaving Rangoon. Travelers starting by the evening train will be there for breakfast next day. This is partly due to the enterprise shown by the company, which has instituted a motor service, while the stationer at Rangoon will report on the progress of the road.

A new sensation. A real pleasure. The big black plug.
Black Watch
Chewing Tobacco

Chase & Sanborn's HIGH GRADE COFFEE

Chase & Sanborn's delicious Coffee is always the same and always the best.

If you are a coffee lover, Chase & Sanborn's will win your heart.

FINEST AMERICAN THREE FIFTY

Is the starting point for style and quality in the Sutherland Men's Footwear list for Spring. Tans, Blacks, Patents, Oxfords and regular Cut, Laced and Blucher effect.

IN LADIES' FINE SHOES

We have been complimented many times on our magnificent showing of Tans, Chocolates and Buckle effects.

A glance at our windows will show you who are the leaders in Swell Footwear.

J. H. SUTHERLAND & BRO.,

The Home of Good Shoemaking.

THE CANADIAN BANK OF COMMERCE

HEAD OFFICE TORONTO ESTABLISHED 1867

B. E. WALKER, President
ALEX. LAIRD, General Manager
A. H. IRELAND, Superintendent of Branches

Paid-up Capital, \$10,000,000
Reserve, 5,000,000
Total Assets, - 113,000,000

Branches throughout Canada, and in the United States and England

A GENERAL BANKING BUSINESS TRANSACTED

FARMERS' BANKING

Every facility afforded Farmers for their banking business. Sales Notes cashed or taken for collection

BANKING BY MAIL. - Deposits may be made or withdrawn by mail. Out-of-town accounts receive every attention

KINGSTON BRANCH

CORNER OF KING AND PRINCESS STS.
P. C. STEVENSON, Manager.

The nicest way to keep Flour, Bread, Meal, Spices, Sugar, etc., is in tin. They are then safe, clean and dry. We have strong lithographed tins of all sizes and kinds. Come in and see them.

McKELVEY & BIRCH, 69-71 Brock St

Reid & Charles

Our Royal Shoes for Spring

HAVE ALL ARRIVED.

For Men, \$5.00.
For Women, \$3.50 to 4.50.

REID & CHARLES,

111 PRINCESS ST. KINGSTON