

**The Happy Combination**  
**Two-in-One Shoe Polish**

The best polish ever made for Ladies' Shoes, because it shines quick as a wink, keeps shoes like new patent leathers, and WON'T SOIL THE CLOTHING. It's a Paste—that shines quicker—hold its gloss longer—and makes shoes wear longer than any liquid-and-paste polish. It keeps ladies' fine shoes soft and easy—prevents them from cracking—feeds the leather—keeps it damp-proof and water-proof.

At all Dealers. In 10c and 25c boxes and 15c Tubes

### THE COALS FAIL

HOPES THAT NEW FIELDS WILL BE FOUND.

Prospects Dark In The "Black Country"—South Staffordshire, Across Cannock Chase, Nearly Exhausted—Earl Of Dudley Boring.

The prospects of the coal supplies of that part of England so familiar as "the Black Country," the cradle of the modern English iron trade, have been engaging much attention lately. In the course of two centuries a good deal of the raw material placed there by nature has been used up. There is a fine seam of coal thirty feet in thickness, but in many places of the Black Country this seam has been worked out, and in others there is the difficulty of water in the workings.

What, then, are the prospects for South Staffordshire? "The coal field," said Mr. Jones, secretary of the South Staffordshire Ironmasters Association, is on the verge of exhaustion. But we know that the South Staffordshire coal field once extended right through South Staffordshire into Denbighshire across the Cannock Chase, and eastwards into Warwickshire. It is only the explored portion of this vast field that has been worked, but between the Shropshire coal field and that of South Staffordshire of the same remote period, there was a great denudation running south-west and north-east, along which the whole of the coal measures were swept away. We do not know the exact size of this denuded area, but Baggeridge the Earl of Dudley has made a boring on the western edge of the South Staffordshire coal field, and has discovered coal, which is evidently the same as the thirty-foot seam of the Black Country. But now we are going further westward, still. At Claverly, near Bridgnorth, a company has secured the mineral rights over a large area of land which they are boring for coal, and should they strike the same seam as the Earl of Dudley has done at Baggeridge another great coal field will be opened up of enormous value.

"On the easterly side of the Black Country," continued Mr. Jones, "the Sandwell-Park Collieries are at work at a depth of 450 yards, and there they have found the same seam much deeper than in the coal field, the average depth of the working of which were not more than 150 yards; and there is every reason to suppose that this seam extends right away into the Warwickshire coal field at Nuneaton and Tamworth, as we know it does at Cannock Chase. "All I am anxious about," said Mr. Jones, in conclusion, "is that there should be no stoppage in proving these areas. The trade of South Staffordshire demands more coal—believe the coal is there."

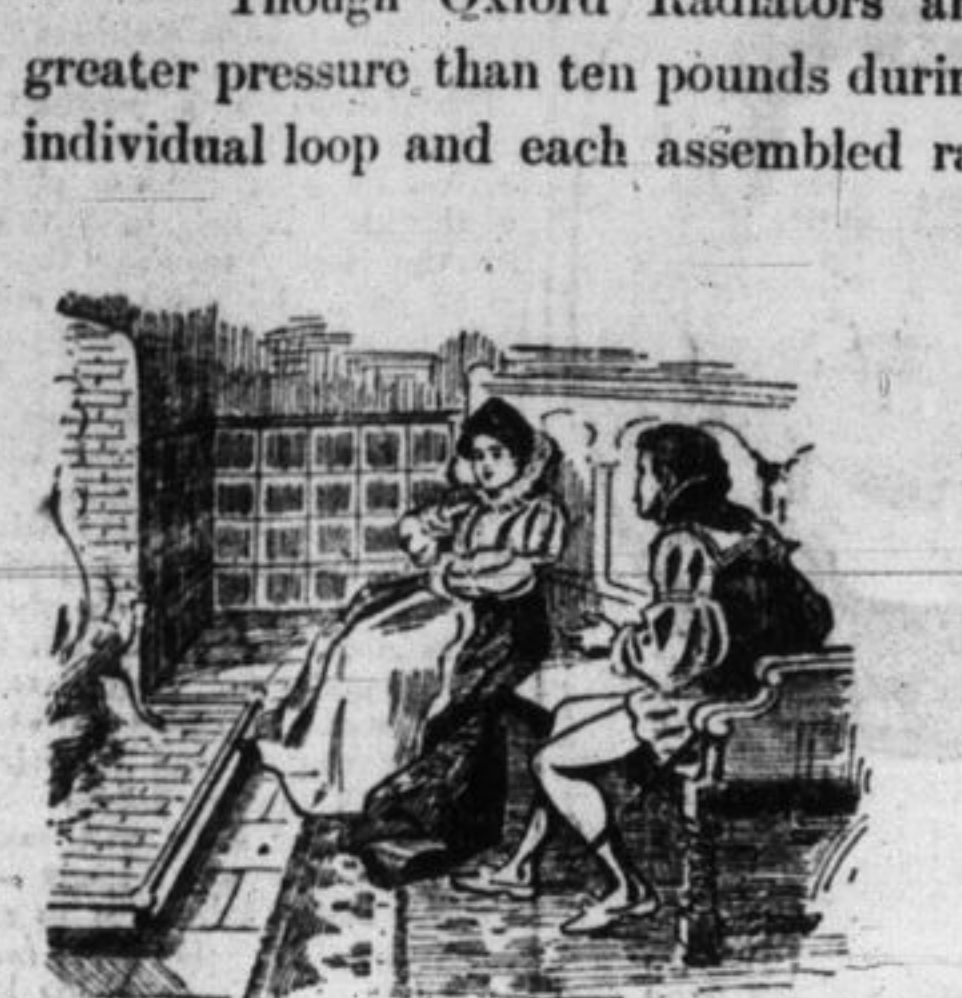
### OUR LIGHTS.

"Fiat Lux" Wants Repairs Made Immediately. Kingston, April 15.—(To the Editor.) It is hoped that the fire and light committee are not so inactive as the editorial in your issue of the 14th inst. would lead the citizens to suppose. The case, however, is one that calls for immediate and vigorous action, by those in authority, if the consumers of electric light are to obtain better service in the near future. It is to be regretted if another winter finds the power plant, which will be under civic control before many weeks, in its present unsatisfactory condition and yet indications are along that line. Allow me to state a few facts in connection with the plant. The present company, doubtless, anticipating the city's action, have made no extension, or improvement, with the result that it has been continually subjected to an overwork during the winter months. This has not only resulted in a poor service, but has been, to some extent, detrimental to the electrical machinery. It is important, therefore, that no time be lost in arranging plans to alter the condition of affairs, immediately the plant comes under civic control. The street mains will require considerable attention; much of the poor lighting that is at present complained of, is due to loss of pressure in the mains, which are entirely too small to carry the load, and (in case of the direct current), covering too large an area. For instance, the pressure at the station of the D. C. three wire system, is 110-220 volts. At the extreme end of the line this falls at times to 80-160, here we have a loss of nearly twenty-five per cent. when we consider that a sixteen candle power lamp will give its full rated candle power at one hundred and ten volts, it will give no more than four or five candle power, at eighty volts, so that the loss in candle power is much greater proportionately than the drop in mains. No wonder the consumer complains of the light furnished, particularly as he has now to burn three lamps, where one ought to suffice, with great cost to himself, and incidentally increasing the receipts of the power company. It is well for the council not to underestimate the task they have undertaken, for as soon as the city obtains control, the citizens will expect improvements, perhaps more rapidly than they will appear. While the matter of improving the plant is not one requiring great engineering skill, it will take time. If the city, after taking possession, will discontinue the street railway supply, as quickly as possible (and it is to be hoped they do not intend to undertake this work permanently, as lighting and railway plants do not work together satisfactorily unless driven by independent engines), the railway load fluctuating to such an extent as to interfere with the steady running of the machinery), then the removal of the railway generators will leave plenty of room in the power house for additional lighting machines, and also sufficient steam power to meet the needs of the city for some time to come. But the railway company is apparently making no move towards the erection of a power plant, doubtless thinking it



Pre-historic man crouched around a brush fire to keep himself warm.

The Elizabethan Age produced nothing better than the open fire-place with its draughty rooms.



The Elizabethan Age produced nothing better than the open fire-place with its draughty rooms.

The nearness of the first water section to the fire keeps the water at a high and even temperature. Its many improvements make it easy to control and highly efficient.

Our entire plant at Toronto Junction, covering many acres of ground, is devoted exclusively to the manufacture of Oxford Hot Water Boilers and Oxford Radiators.

We would like to send you some of our booklets about the Oxford Hot Water or Steam Systems of heating—they tell the whole story.

## Oxford Radiators

The evolution of heating has been long and tedious. Centuries of discomfort lie back of the comfort we have reached to-day in the hot water and steam systems of heating. For healthful atmosphere, cleanliness, ease of operation and evenly distributed warmth, the Oxford Hot Water or Steam System is unequalled. The system consists of Oxford Radiators and an Oxford Hot Water or Steam Boiler.

Oxford Radiators are cast of the best grade of iron in machine-made moulds which assure absolute uniformity of thickness, making expansion cracks impossible.

Though Oxford Radiators are rarely subjected to a greater pressure than ten pounds during operation, we test each individual loop and each assembled radiator to a cold water pressure of one hundred and twenty pounds, guaranteeing absolute safety.

As the loops of the Oxford Radiator are connected with the Oxford Push Nipple, which makes a perfect iron-to-iron connection without a washer, leaks at the joints are impossible.

Oxford Hot Water Boilers are made of the best cast iron and will not rust even when the water lies in them all summer.



The charcoal brazier of ancient Rome was beautifully wrought but gave little comfort.



Our grand-parents sat by the old box stove with chilly backs and burning faces.

## THE GURNEY FOUNDRY CO., Limited

TORONTO MONTREAL WINNIPEG VANCOUVER

The modern home is equipped with Oxford Radiators and Oxford Hot Water or Steam Boilers, giving pure, healthful, evenly-distributed warmth.



### TRAVELLING.

#### GRAND TRUNK RAILWAY SYSTEM

#### World's Fair St. Louis, Mo., 1904.

Open From April 30th to Dec 1st

The largest and most costly Exposition ever held.

The space for exhibits is the greatest ever under Exposition roofs, but the very best seats of Exposition processes, rather than production, will be a distinct development in expositions, compared with other Expositions. The World's Fair of 1904 contains 1,240 acres, in comparison with Chicago in 1893, which contained 633 acres. Paris Exposition in 1900 with 236 acres, and the Pan American at Buffalo, occupied 300 acres.

Popular and fast train service to and from the World's Fair City via the Grand Trunk Railway system.

J. P. HANLEY, Agent, City Passenger Depot.

#### KINGSTON & PEMBROKE & CANADIAN PACIFIC RAILWAYS.

#### World's Fair St. Louis

April 30th to December 1st, 1904

Special one-way Second Class Colonist Excursion Tickets, on sale daily, during March and April from Kingston to Vancouver, Victoria, New Westminster, B.C., Seattle, Tacoma, Washington and Portland, Ore.

\$46.30. Kingston to Nelson, Robson, Trail, Kamloops, Greenwood, Midway, B.C., and Spokane, Wash.

\$43.80.

#### Special Settlers' Trains To Canadian North-West

Will leave Kingston every Tuesday during March and April at 8:10 a.m. D.R. train connections.

Full particulars at K. & P. and C.P.R. Ticket Office, Ontario St., Kingston. P. A. FOLGER, JR., Gen. Pass. Agt. Gen. Supt.

#### THE DAY OF QUINTE RAILWAY NEW SHORT LINE FOR

Tweed, Napawan, Deseronto, and all local points. Train leaves City Hall Depot at 4 p.m. P. CONWAY, Agent, 3, G. St., Kingston.

#### ALLAN LINE Liverpool and Londonderry.

ROYAL MAIL STEAMERS From St. John From Halifax

First Cabin—Pretorian, \$65 and upwards, Parisian, \$70 and upwards, Tunisian, \$40, Ionian, \$40 and \$42.50, London, \$2.50 extra.

Third Class—Superior accommodation, 425 and \$26, to Liverpool, Derry, Belfast, Glasgow and London. Through tickets to South Africa.

NEW YORK TO GLASGOW. Monoclia, ... April 28th, 11 a.m. Laurionian, ... May 12th, 2 p.m. MONTREAL TO GLASGOW DIRECT. Corinthian, ... May 4th, (daylight).

J. P. HANLEY, Agent, G.T.R. City Passenger Depot, 3, G. St., GILDER-SLEEVE, Clarence Street.

#### Have You Wood and Coal to Burn?

Here are the two most economical fuel investments we know of:

#### Hard Coal! Hard Wood!

Whether it's Wood or Coal we deliver, we employ careful samplers, who know their business too well to do it in an untidy way. We charge for the cleanliness—but it's worth something to you.

#### BOOTH & CO.

Phone 133. Foot of West St.

#### ORGAN BARGAINS!

Organs, second hand, in good condition, from \$25 to \$50. Upright Piano, second hand, large size, regular price, \$335, will sell now for \$125. Violin, Mandolin, and Guitar steel strings, not wound, 2 for 5c.

AT McDOWALL'S MUSIC STORE, 471 Princess Street.

When everyone has tried Blue Ribbon Ceylon Tea there will be no need to advertise it. Once tried, always used.

### CAN MAKE AND

Detroit's exclusive... New... Cleaner is

### You Pay

Expect 25c Mon... Method and P... Write For

A Detroit special... perfected a startle... of men in their co... no doubt in the

DR. S... The Possessor of I... Who Wants N...

both the method and... Dr. Goldberg, the di... entirely free to all... and address. He... have structure that... cured, prostatic tro... society, not manhood... association of parts, i... had not only cure... was all the compl... bladder or kidney tr... density, etc.

The doctor realizes... claims and another... has made it a rule not... cures you, and when... that you will willing... of every man who... doctor conscientiously... He sends the method... the subject, including... diploma and certifi... him a remedy. Dr. S. Goldberg 208... Detroit, Mich., and... you free.

This is something... having more about

### Wills' E

The World's... for Consti... ness... He

No gripping... Wills' English I... trouble and give... per bottle at all... the Walls & Ri... 200 Mountain st...

### CANNI

YOUR... I lasts all... -P. W... 53-57 BAR...

Women of taste—fairly luxuriate in the wealth of choice offered this year by our Spring Stock of Millinery. Never in the history of the store has there been such a varied multiplicity of tasteful, exclusive and beautiful designs for Spring Fashiondom.

Join the blithesome throng which is making these bright days full of pleasurable activity. Buyers or not, you're heartily welcome, and will not be urged to buy.

### Spence & Co.,

The Leading Millinery and Mantle Store.

### NO HURRY OR WORRY

WHEN YOU USE

The Canada Metal Company's Solder and Babbit.

## Ayer's Hair Vigor

Why not keep your own hair? And get more, too? Have a clean scalp; restore the color to your gray hair.

J. C. Ayer & Co., Lowell, Mass.

### FRESHNESS, NEWNESS AND NOVELTY EVERYWHERE!



### Spence & Co.,

The Leading Millinery and Mantle Store.

### NO HURRY OR WORRY

WHEN YOU USE

The Canada Metal Company's Solder and Babbit.

### SPORTS IN GENERAL.

#### Notes About the Various Sporting Fields.

The Canadian lawn bowling team will play their first match at Liverpool on June 6th.

It is estimated that \$2,200,000 will be raced for over the New York jockey club tracks this year.

It is whispered that Phillips, of Marlboro hockey fame, may hang up his hat in Brockville ere many moons have passed away.

The ten mile flat championship of Scotland was won by T. Jack, of the Edinburgh Southern Harriers, in 55m. 94.5 sec., creditable time considering the extreme cold, strong wind and rain.

It is now claimed that Britt, who defeated "Young Corbett," is a Cape Breton boy, having been born at Margaree Harbour, twenty-five years ago. Munro who defeated Sharkey is also a Breton.

At the lowest estimate, forty thousand people witnessed some portion of the race between Oxford and Cambridge. The winners of the race could not be matched against the winning crews of the last few years, but the losers would beat most of the crews which have come in second during the same period.

v Baseball. The Eastern baseball league season opens on April 27th and closes September 23rd.

The new baseball player is a very delicate plant. He is planted in the winter, is developed in the spring and gets rotten in the summer.

One of the new scoring rules reads as follows: "An assist should be given to each player who handles the ball in aiding in a run out or any other play of the kind, except the one who completes it." Why, should the mere fact of a player making a put-out deprive him of the assist? Unless all signs fall Rochester will have a good sticking team this year. The outfielders are all strong with the ash and the infielders are consistent hitters. Handicapped by the weather and by cancelled games the Rochesterians will have a good deal to contend with at the beginning of the season.