

TRAVELLING. GRAND TRUNK RAILWAY SYSTEM. EXCURSIONS. CHRISTMAS AND NEW YEAR'S HOLIDAYS.

CHRISTMAS SINGLE FARE—Good going Dec. 24th and 25th. Return limit, on or before Dec. 26th. FARE AND ONE-THIRD—Good going Dec. 24th, 25th and 26th. Return limit on or before Jan. 5th. NEW YEAR SINGLE FARE—Good going Dec. 31st, Jan. 1st. Return limit, on or before Jan. 4th.

For Christmas and New Year's Vacation WILL ISSUE RETURN TICKETS. GENERAL PUBLIC.

AT SINGLE FIRST-CLASS FARE—Good going Dec. 24th, 25th, valid for return until December 26th, 1904. Good going December 31st, 1903, and January 1st, 1904, valid for return until January 4th, 1904. AT FIRST-CLASS FARE AND ONE-THIRD—Good going Dec. 24th, 25th, and 26th, and December 31st, 1903, and January 1st, 1904, valid for return until January 5th, 1904.

DOMINION LINE STEAMSHIPS PORTLAND-WALFAX-LIVERPOOL.

From Portland, Dec. 26 Nomatic. Jan. 16 Canada. Jan. 2 Dominion. Jan. 23 Ottoman. Jan. 9 Tauric. Jan. 30 Parnegoe steamers went bound call at Halifax. For all particulars as to freight and passage apply to J. P. HANLEY, G.T.R.

BERMUDA. THE NEW FARMER BERMUDA.

With cable communication and equable winter temperature of 65 degrees, beautiful scenery and 100 miles of good roads, Bermuda is the most desirable winter home for the British North American Squadron, is unrivalled in its attractiveness, reached by the first-class steamers TRINIDAD or PRETORIA in forty-eight hours from New York.

ALLAN LINE LIVERPOOL AND LONDONDERRY. ROYAL MAIL STEAMERS.

From St. John, N.S., Dec. 21. Tunisian, Dec. 19. From Halifax, Dec. 21. Parisian, Dec. 19. From Montreal, Dec. 28. From St. John, N.S., Jan. 4. From London, Jan. 4. From Liverpool, Jan. 4.

MAYORALTY OF 1904. ALD. W. G. CRAIG.

Requests the votes and influence of the Electors of the Municipality of Kingston, for Mayor for 1904.

MAYORALTY 1904. C. J. GRAHAM.

Ladies and Gentlemen—I respectfully solicit your votes and influence to elect me mayor for the year 1904.

W. F. DEVER & CO. 159 Wellington Street, Kingston.

JOHN H. MILLS. The Leading Auctioneer.

Christmas Delicacies with the QUEEN.

Turkeys. Fresh Salmon. Fresh Lobsters. Boneless Haddies. Wild Duck. Malpeque Shell Oysters. Blue Point Shell Oysters and Booth's celebrated Naval Brand Oysters, which have no equal.

DOMINION FISH CO. 63 Brock St. Phone 520.



HOTEL EMPIRE, Broadway and 63rd Street, N.Y. City.

From Grand Central Station take cars marked "Broadway to Fort Lee Ferry" and reach Hotel Empire in seven minutes. All surface cars of the "Metropolitan Transit Co." pass the Hotel Empire.

Metropolitan Stock Exchange CAPITAL \$100,000 FULLY PAID.

KINGSTON BRANCH Clarence Chambers, Clarence St. Opposite British American Hotel.

WOOD AND COAL. The central Wood and Coal Yard is located at 236 Earl Street.

B. BARNEY. PRESSING AND REPAIRING. A SPECIALTY. YOUR OWN CLOTH made into up-to-date suits.

Brain Controls Every Muscle. Injury to Brain or Nerves, Deafness, Paralysis and Helplessness.

Dr. Chase's Nerve Food. Every muscle of the body controlled by the will is connected with the brain.

Merry 'Xmas. Is coming, Jolly old Santa Claus is now abroad in the land.

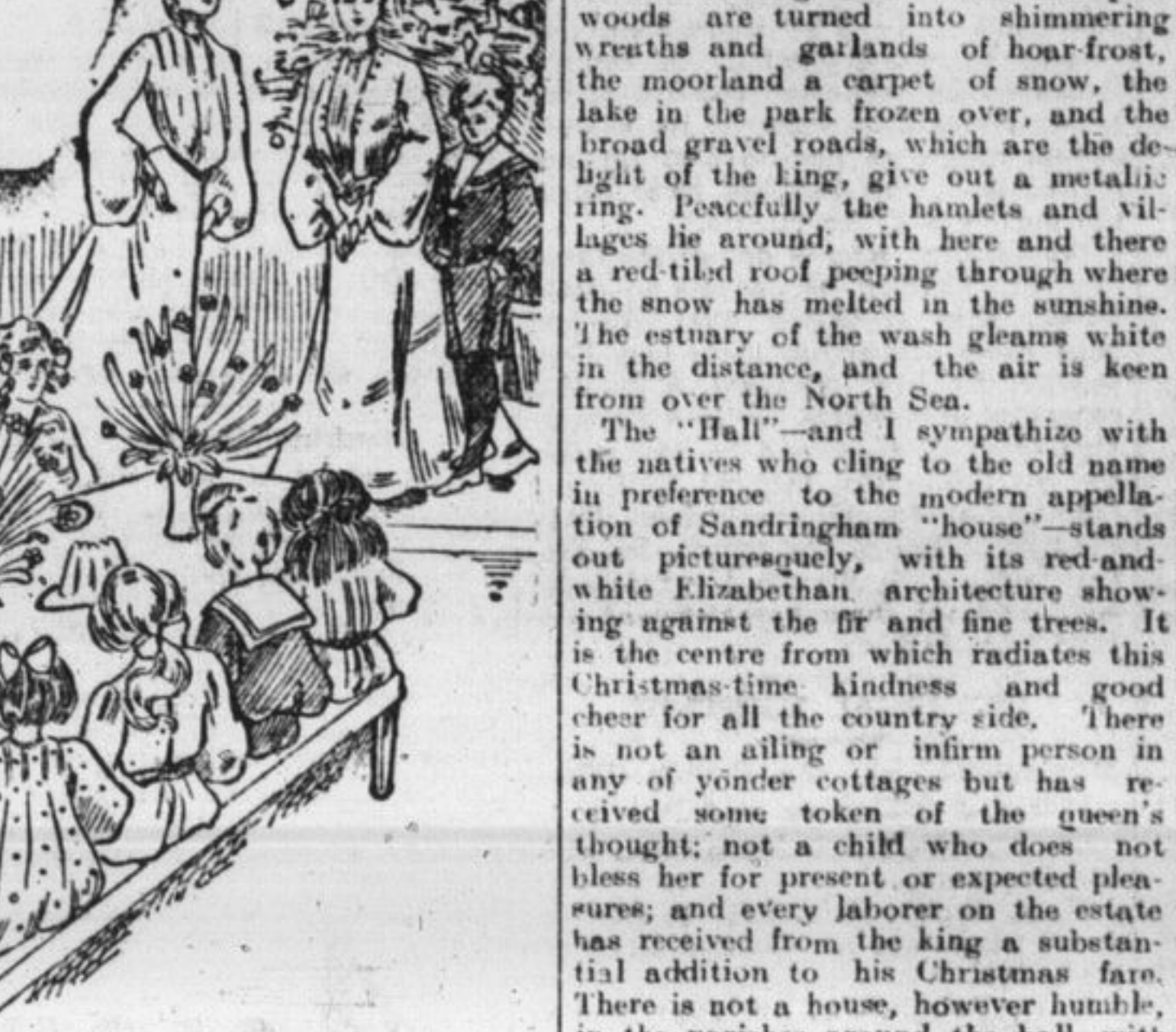
R. CRAWFORD, Foot of Queen Street. Phone 9.



when the Norman kings held their wassail on the royal hill, and "Many a carol old and sautty sang the minstrels and the waits." There is indeed no royal residence more intimately associated with the Christmas festivities of the court than Windsor Castle.



Afternoon and early evening spent in stripping trees. regarded as a precedent for the future it is unwise to prophesy, but in describing a Christmas with the queen we have still to travel to Norfolk.



never willingly forsake the old place. The forebodings were justified when it was announced in the paper that the king and queen would keep Christmas at Windsor.

WOOD AND COAL. The central Wood and Coal Yard is located at 236 Earl Street.

B. BARNEY. PRESSING AND REPAIRING. A SPECIALTY. YOUR OWN CLOTH made into up-to-date suits.

Brain Controls Every Muscle. Injury to Brain or Nerves, Deafness, Paralysis and Helplessness.

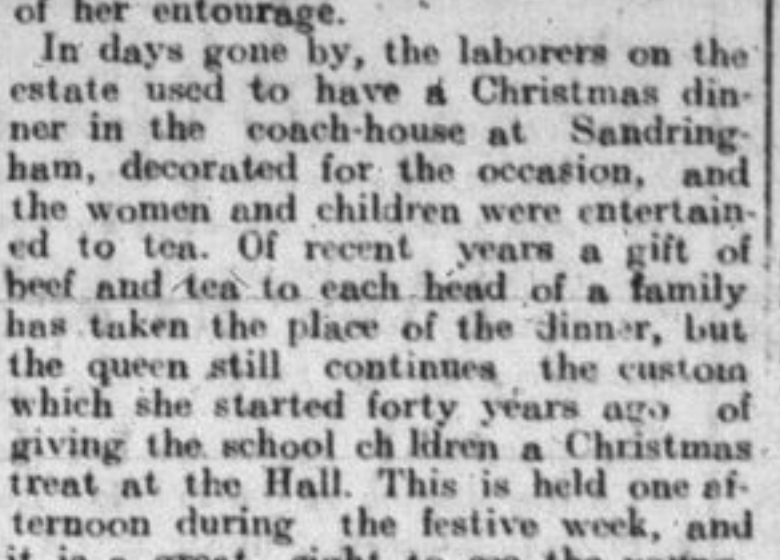
Dr. Chase's Nerve Food. Every muscle of the body controlled by the will is connected with the brain.

Merry 'Xmas. Is coming, Jolly old Santa Claus is now abroad in the land.

R. CRAWFORD, Foot of Queen Street. Phone 9.

usually walks. The church has been prettily decorated, not by the queen, as is frequently stated, but by Mrs. and Miss Harvey, the queen's wife and daughter, some of the flowers and evergreens having, however, been sent from Sandringham.

In days gone by, the laborers on the estate used to have a Christmas dinner in the coach-house at Sandringham, decorated for the occasion, and the women and children were entertained to tea.



Consciousness of their pleasure gives the queen a happy Christmas. games. The servants come to look at the merrymaking. It is in some respects a repetition of the tea which her majesty gives the children on her birthday, December 1st, and the two occasions are her great delight.



Jenkins' Neckwear. This department has always enjoyed the reputation of being pre-eminently the largest and best assorted in the city.

WOODS' FAIR. An Avalanche of Bargains for WEDNESDAY.

Only two days more to do business before Christmas and we purpose cutting prices, so that Santa Claus will have to hire extra sleighs to deliver his loads.

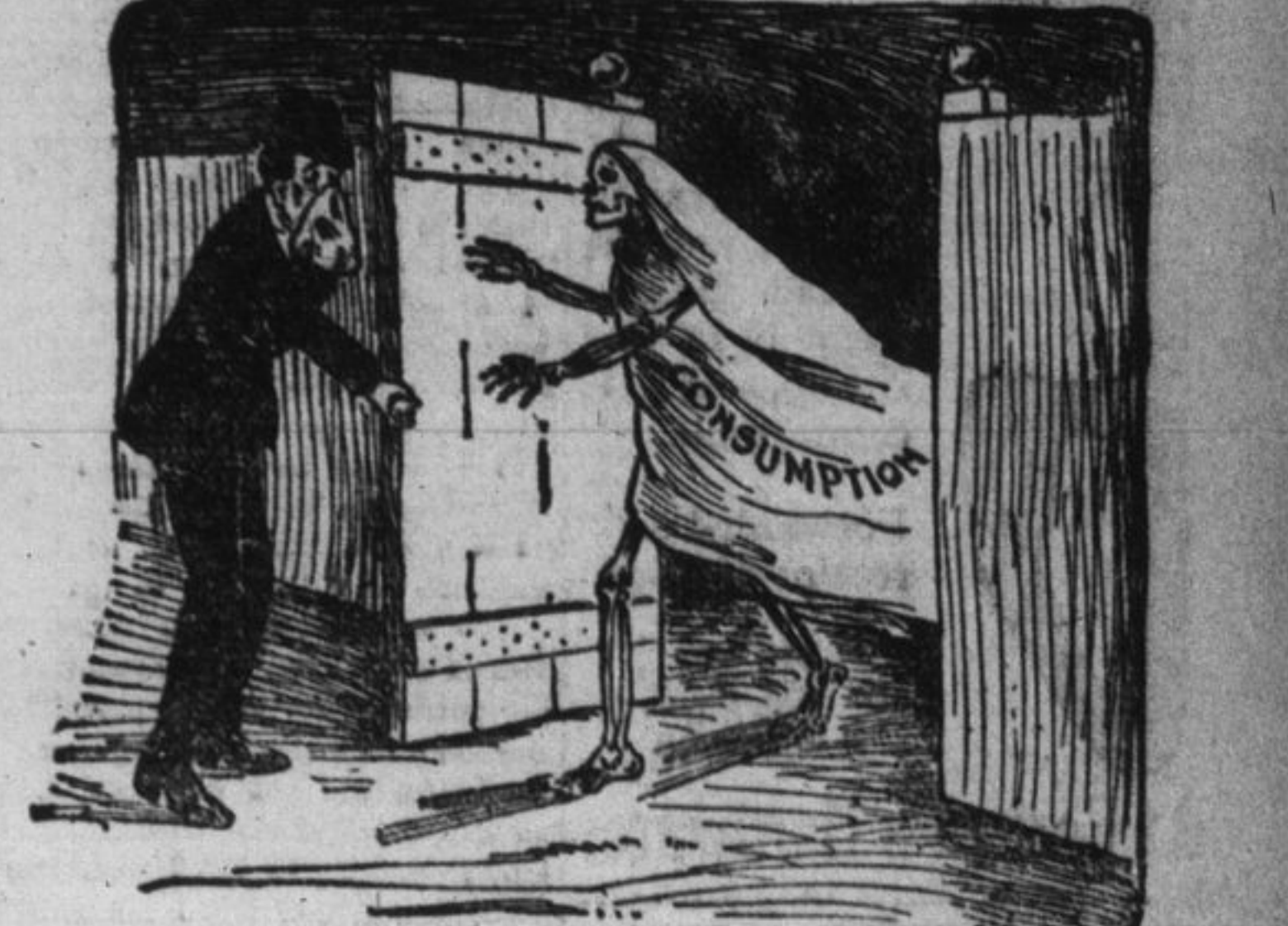
69 only Assorted Pattern Salad Bowls, best semi-porcelain ware, marked 20c. and 25c., on sale 9 for 25c.

All Fancy Lamps were reduced this week, but for Wednesday an extra 10 per cent. off.

The Best Remedy For Croup. From the Acheson, Kan., Daily Globe. This is the season when the woman who knows the best remedies for croup is in demand in every neighborhood.

WOODS' FAIR. See Our Window of Candies at 10c. a lb. For sale by all druggists.

CATARH Great White Plague. Is An Open Gateway for the.



Because it is such a slowly progressive disease and lingers along, year after year, now better, now worse, but on the whole getting more deeply and firmly seated, people are prone to overlook its destructive tendencies and neglect Catarrh.

Catarrh is a prevailing plague, the foremost scourge of America. Its stealthy approach and lingering stay make it dread to the physician and a pest to the patient. It is vastly more than just a local ailment.

WOODS' FAIR. An Avalanche of Bargains for WEDNESDAY.

Only two days more to do business before Christmas and we purpose cutting prices, so that Santa Claus will have to hire extra sleighs to deliver his loads.

20 dozen Fancy Bread and Butter Plates, 6 for 15c. Ladies' White Wool Gloves, marked 25c. and 50c., on sale 15c. and 25c.

Big shipment of silvered steel Knives and Forks, good wearing cutlery, special price 6 of each for 49c.

Another shipment of our special Bagster Teachers' Bible at \$1.

Large 400 page Illustrated Books, value 60c. and 75c., to clear 35c.

100 dozen Fancy China Cups and Saucers, 10c., 15c., and 25c. a set.

WOODS' FAIR. See Our Window of Candies at 10c. a lb. For sale by all druggists.