



Care & Share THRIFT SHOP

Mennonite Central Committee



Since we opened in 1981, volunteers like Erma Keeler and Luella Lewis have been helping

The Care & Share Thrift Shop to serve the Stouffville Community, while providing relief for the needy through-out the world.

6240 Main Street
Stouffville

OPEN

Monday — Saturday
9:30 a.m. - 5:00 p.m.
Friday till 8:00 p.m.

Phone:
905-640-1410



To learn more about Mennonite Central Committee check out www.mcc.org

Society unveils research on early days

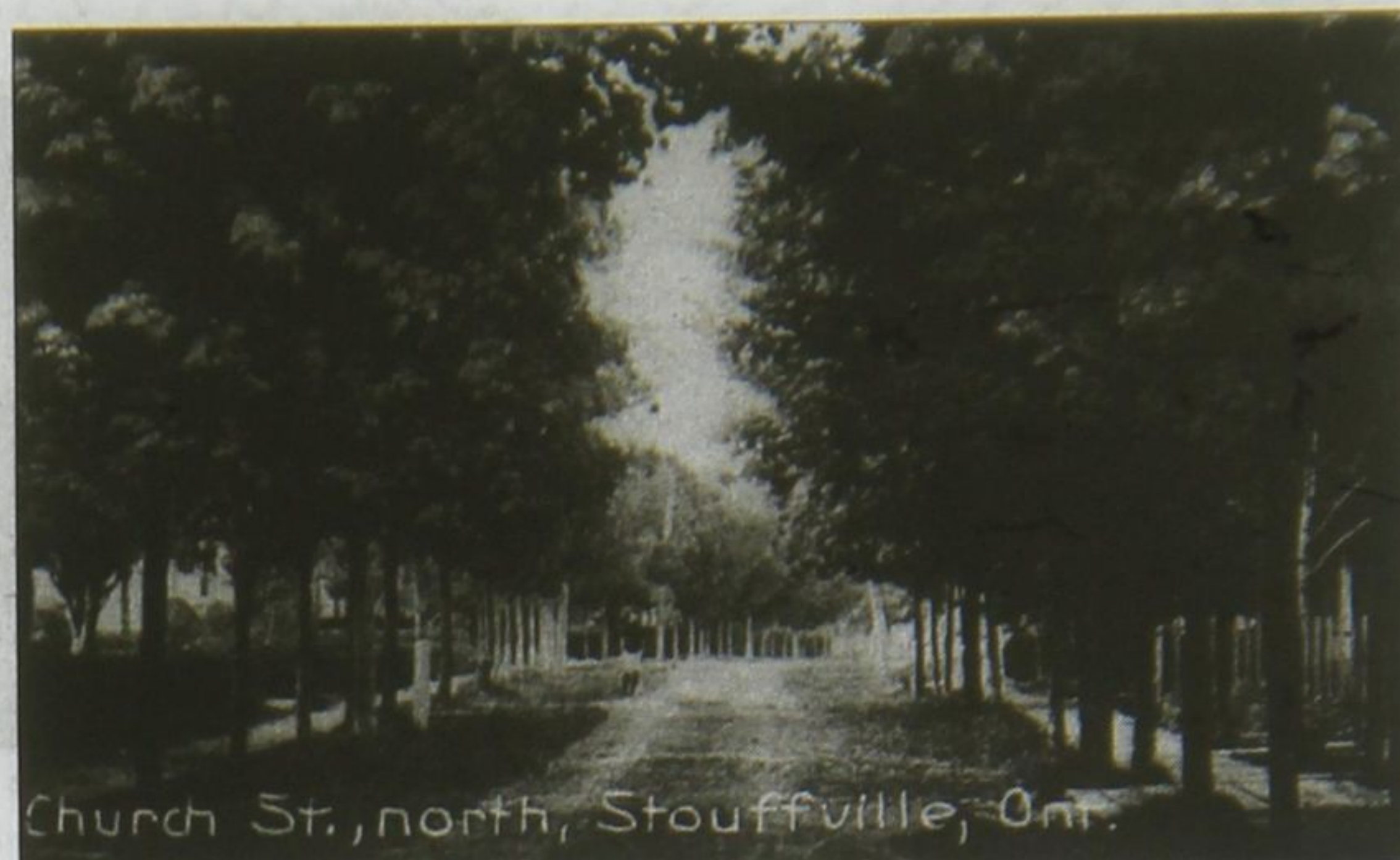
The Whitchurch-Stouffville Historical Society is holding its regular meeting Oct. 28 at 7:30 pm in the Whitchurch Stouffville Council Chambers on Sandiford Drive. At this time there will be an archaeological experience, as we go "Digging for Stouffville's Roots"!

Elsewhere in this paper you will have read about the significance of 2004 in the history of Stouffville. Abraham Stouffer made his way from Markham, where his in-laws settled, to the southern part of Whitchurch, where he found a mill site on land that appears to have been unoccupied. Early in 1805 he negotiated the purchase of the site, and the other lands on what is now the north side of Main Street. A year later he purchased 200 acres on the south side of Main Street. Sometime in 1805 he moved his wife and children to his mill site, and thus began the town of Stouffville... Abraham Stouffer and family on the Whitchurch side, and John Williams and family on the Markham side.

It took another 20 years before Stouffer contracted with David Gibson, the provincial surveyor, to lay out a town plan on both sides of the road. There were seven or eight lots on each side. Three years later the first lot was sold.

If you'd like to hear more about who purchased the property, who lived in the village, who the tradesmen were and what they did, come to our meeting in the Council Chambers. All are welcome!

Ruth Burkholder, President
WSHS



Church St., north, Stouffville, Ont.



Two scenes from early Stouffville: Church Street looking north, and Main Street on market day. Photos courtesy Whitchurch-Stouffville Museum.



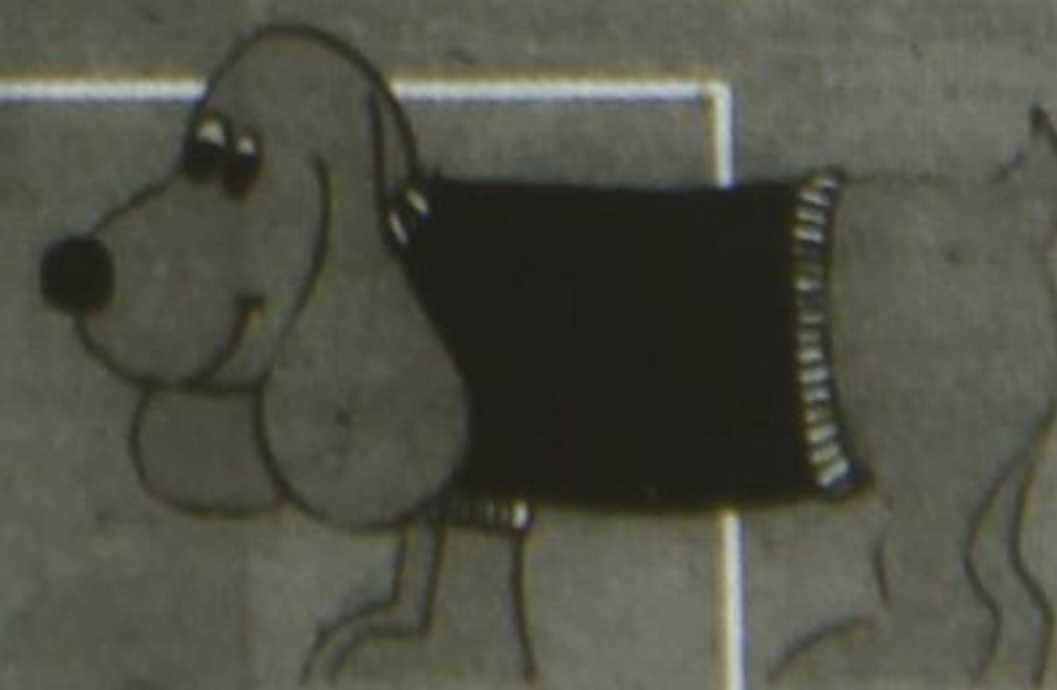
We're Only 197 Years Away from OUR Bi-Centennial!

...And to celebrate we're paying the taxes* 1 DAY ONLY! SATURDAY NOVEMBER 13

The chilly weather's here - Don't forget your best friend!



We have a great selection of dog coats and sweaters



*15% off regular prices, excluding dog and cat food

Where Service and Knowledge are Free.

6356 Main St. E.

(downtown Stouffville near the Post Office)
Lots of parking at rear of building

www.thepetstop.ca

905-640-0123

Business Hours

Mon, Tues. & Wed. - 9am - 6:30pm
Thurs. & Fri. - 9am - 6pm
Sat. - 9am - 6pm
Sun. - 12 noon - 5pm

We accept Cash

