

**NOW
OPEN**

**...Strawberries
...Quality Fresh Baking
...Please call for U-pick
Strawberry Information**

Mon.-Sat. 9-6:30,
Closed Sundays

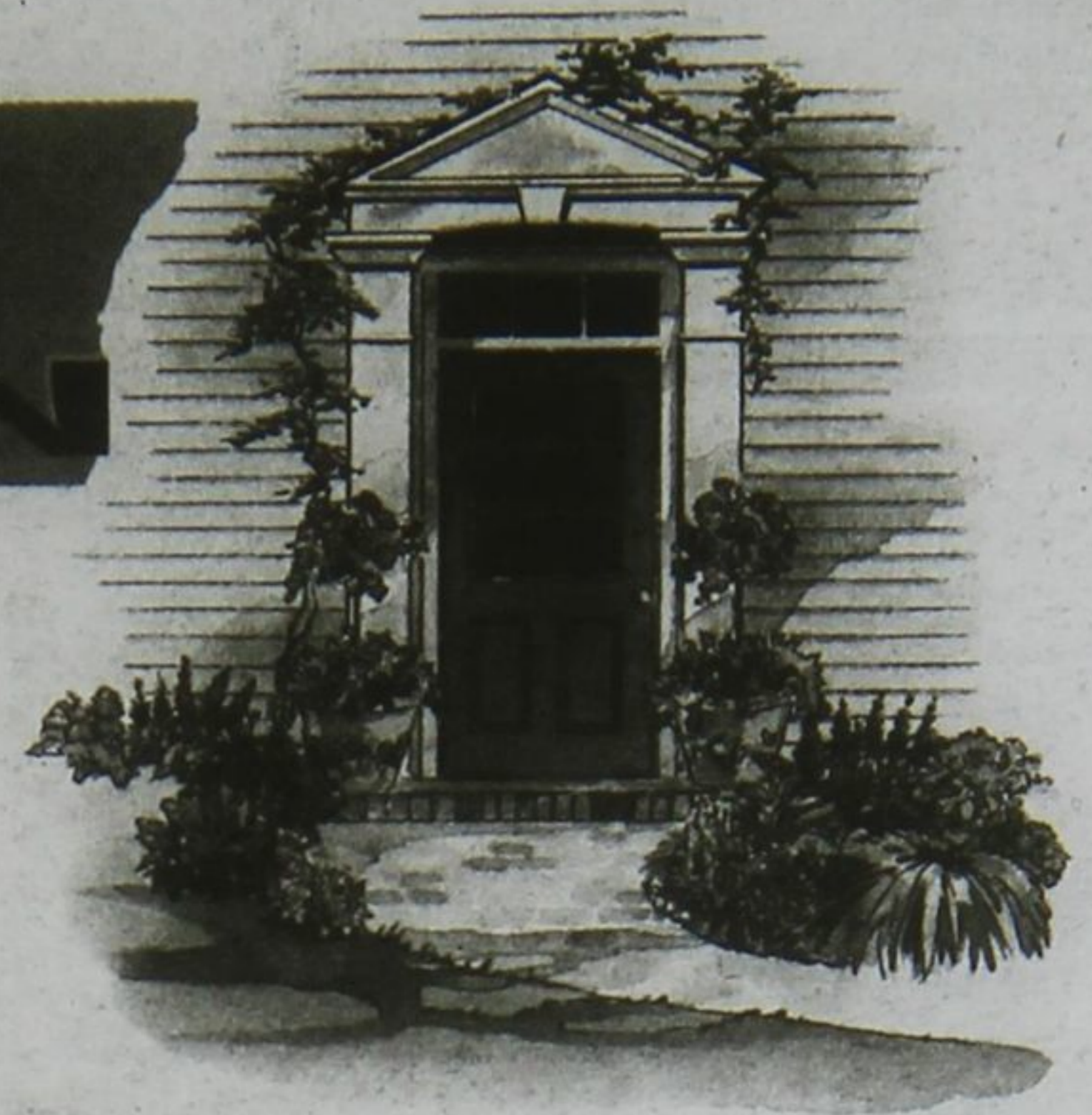
(905) 640-4568

www.reesorfarm.com

10825 Ninth Line
at Elgin Mills Rd.

HOME and GARDEN

Respect Your Mower: Knowledge is Power



Over time mowing the lawn becomes almost second nature. Most people are in a hurry to get it done. However, it's important to remember that you're not just mowing the lawn; you're using a powerful machine capable of cutting or hurling more than just grass.

Taking a few simple precautions can greatly reduce the risk of injury. Here are seven safety steps to help you operate your mower efficiently and safely.

1. Read your owner's manual. Many owners don't understand their mowers

can cause injury or damage.

2. Don't let children who are not responsible or physically able to operate a mower.

3. No passengers. Adults often give rides to children, but passengers should never be on board.

4. Dress properly. Wear hard shoes, long pants and a shirt that protects your chest and arms. Safety glasses should be worn to protect eyes.

5. Pick up debris. Rocks, branches, wire or soda cans may cause injury to

you, someone nearby or your mower.

6. Prepare your mower. Visit your servicing dealer for a pre-season tune-up to ensure all safety switches are in proper working order and that there are no loose or missing parts.

7. Stay alert. Don't allow distractions, such as pets or children to enter your mowing area.

Don't let the routine of mowing the lawn lull you into skipping safety steps.

- News Canada

**Interested in Advertising in our August Issue
Call Bruce at 905-642-8107**

HOME ELEMENTS Addison Custom Iron

FOR ALL YOUR DECORATING IDEAS, INSIDE AND OUTSIDE



We have a great selection of ironware, glassware, candles, baskets, furniture & much more. Come in and Custom design your iron gates, railings, or garden accessories.



86 Ringwood Dr. #29
Stouffville
905-642-7072



WHAT HAPPENS WHEN EXTREME COMFORT MEETS EXTREME DURABILITY?

Premium LX Tractors Combine
Luxury and Longevity in One
Powerful Package



LX266 Lawn Tractor
16 horsepower

LX277 Lawn Tractor
17 horsepower

LX288 Lawn Tractor 18 horsepower

NO PAYMENTS • NO INTEREST

Until January 2004

www.JohnDeere.com

NOTHING RUNS LIKE A DEERE!



Hutchinson Farm Supply Inc.

14183 Hwy. 48 Stouffville 905-640-2692

Subject to approved credit. Monthly payments based on John Deere Credit Financing Plan. For promotional financing, terms, restrictions, and safety program, visit us online at www.johndeere.com. *Offer subject to credit review and may vary by location, including restrictions on financing for individuals with bad credit. ©2003 John Deere.