

**MONTHLY MUSINGS**

*We used to be hampered by "Sunday Drivers". Now it's "Yard Sailors".*

905 640-1867  
Thos. E. Winters

# Doors Open on Stouffville heritage

By Patricia Robinson  
Special to Stouffville This Month

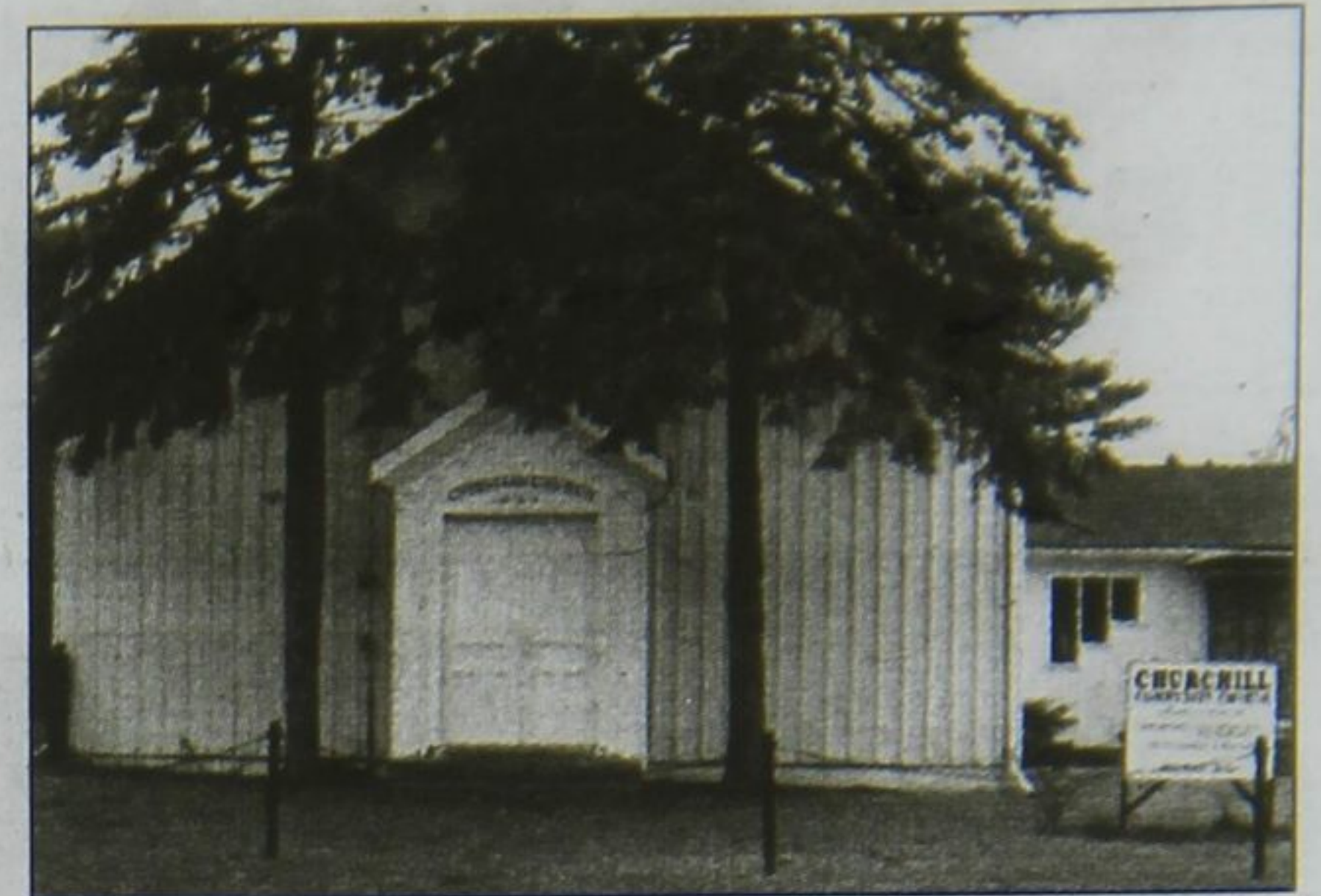
In this issue of Whitchurch-Stouffville This Month we take a look at the final three of 15 sites participating in Doors Open Whitchurch-Stouffville on June 5. For more information about these and other

participating sites, visit [www.doorsopenws.ca](http://www.doorsopenws.ca).

**Churchill Baptist Church**  
In August 1872, residents from northern areas of Whitchurch-Stouffville to East Gwillimbury petitioned for a new church because of the hardship in attending the nearest Christian Church, which was located more than three miles away in the Hamlet of

Bloomington. By November 1872, the Churchill Christian Church was open for prayer.

The building of this church in three short months provides an exemplary example of community effort, with land, materials and time all donated by local residents. Despite its many hardships, the community always remained



CHURCHILL BAPTIST CHURCH

strong and protected the building from being sold or moved from its original site. Now a Baptist church, this building is an excellent example of a rural church built in a much vernacularized Gothic Revival style, with beautiful architectural features.

At Doors Open you can discover this quaint church -- a product of faith and community that has stood the test of time.

**Stouffville Memorial Christian Church**

Established as the Congregational Church in 1842, this is the oldest church in Stouffville. The congregation worshiped in a schoolhouse before mov-

ing to a small church on the south side of Main Street east of Cemetery Lane in 1848. To accommodate the growing congregation, the current 300 seat Gothic Revival style church was constructed in 1874.

At the time there were approximately 350 residents in Stouffville. The congregation disbanded in 1902 and the church and surrounding property were purchased by Jacob Burkholder. He presented the deed to the Conference of Christian Churches in Ontario on the condition that a Christian Church be established. It was named Memorial Christian Church.

On June 5 you can tour

Turn to page 3

## Park Drive Dental Centre

12 Park Drive South Stouffville



Dr. Bob Boodway Introduces his Associate:



New Patients Welcome - Evening Appointments Available



STOUFFVILLE MEMORIAL CHRISTIAN CHURCH



### FARQUHARSON REALTY LIMITED

SELLING PROPERTIES IN STOUFFVILLE, UXBRIDGE AND SURROUNDING AREAS SINCE 1956.

Dan Farquharson  
Broker/Owner



Mona Farquharson  
Broker/Manager



**PALATIAL CUSTOM STONE MANSION** 2 Yrs Old. 4750 Sq./Ft. Private Wooded 2.7 Acres in Foxfire Estates. Maple & Granite Kit Open to Great Rm. Hrdwd Flrs. I/G Pool. W/O Bsm't. Extraordinary Construction, 46' x 36' Garage w/Loft.



**PRIVATE HILLSIDE ESTATE** 10 Acs. w/ Pond & River. Redwood & Limestone Main House. Great Room w/27' Cath. Ceiling & Stone FP. French Country Kit w/FP. Large formal Dining Rm. Library w/FP. Sep. Coach House. Indoor & Outdoor pools. Incredible Landscaping. 5 Minutes to 404.



**MAGAZINE QUALITY.** "1860" School House w/New Addition on 10 Private Acs. Lovingly Restored & Decorated. The Beautifully Landscaped Grounds incl. a heated Pool, tennis court, hot tub, goldfish pond, two waterfalls, two spacious decks & acres of perennial gardens & fruit trees. Sep. 1500 sq. ft. Recreational Bldg. Truly A One of a Kind.



**CLASSIC CENTURY COUNTRY MANOR.** Extraordinary 102 Acres with Woods. Ponds and Breathtaking Long Views. Spectacular Great Room with 2 Storey FP. Loaded with Character and Charm. Extensively and Tastefully Landscaped. Garages for 10 Cars. Barns. Excellent 3 Bedroom Gate House. Uxbridge.

### HERITAGE HILLS II In The Heart of Uxbridge

A Very Special New Enclave of 16 Architecturally Controlled Estate Homes

- \* 16 New Estate Lots From 1.6 Acres to 11 Acres From \$220,000
- \* Exquisitely Designed Bungalows and 2 Storey Estate Homes From \$657,000
- \* Exclusive Enclave Bordered By Durham Regional Forest, Wooden Sticks Golf & Country Club, Oak Ridges Moraine
- \* Ask For Your Complete Heritage Hills II Package



**HERITAGE HILLS II Country Romance** Lot 10, 1.76 Acres. Fabulous Stone 2 Storey, 4 Bedrooms, Great Room with Vaulted Ceiling, Granite Counters, Hardwood. To Be Built Spring 2004.



**HERITAGE HILLS II Country Romance** Lot 9, 1.53 Acres. Spectacular 3400 Sq/Ft Victorian Bungalow. 3 or 4 Bedrooms. Vaulted Ceilings. Granite and Hardwood. To Be Built Spring 2004.



**SENSATIONAL PRIVATE WOODED** 5 Acres. Luxury 2500 sq. ft. Open Concept Bungalow. 6 Months Old. Fabulous Great Room. Large custom Country Kitchen. Walkout basement. Excellent Buy. Only 5 minutes to Hwy. 404.



**50 ACRES** Adjacent to York Regional Forest. Miles of Trail at Your Doorstep. Custom Bungalow. 3+2 Bedrooms. Fully Furnished Bright Walkout Lower level. Aurora Rd. & 48. Extremely Private.

### \*\*\* DAN & MONA'S SALES RESULTS FOR 2003 \*\*\*

GTA One of Top 50 Agents of All 19,500 Realtors in the GTA	N12 #1 Value of Real Estate Sold (Whitchurch-Stouffville)
N13 #1 in Value & Units over \$350,000 (Whitchurch-Stouffville)	N16 #1 Value Over \$350,000 (Uxbridge)
	E21 #1 value Over \$350,000 (Scugog)

\*\*\* These statistics are compiled by I/M/S, an Independent Research Company using Toronto Real Estate Board Data \*\*\*

Let Us Help You Add Value to Your Property For a Confidential Consultation  
Call Dan & Mona Farquharson 905-640-4151



905 640-4151

farquharsonrealty.com  
honesty, integrity & service since 1956