

CHARGED WITH AN OFFENSE

JH LEGAL SERVICES

FREE CONSULTATION NOT GUILTY!

WE SPECIALIZE IN:

- CRIMINAL
- IMPAIRED
- CIVIL

GETTING CHARGED WITH AN OFFENSE CAN BE A "TRAUMATIC EXPERIENCE!" WITH JH LEGAL YOU ARE NO LONGER ALONE!!!

WE ARE AVAILABLE 24 HOURS WE WILL EVEN COME TO YOU!!! SERVING YORK REGION & THE GTA

CALL NOW!!
647-885-9818
www.jhlegal.g2gm.com

WET BASEMENT?

Clarke Basement Systems

Responsible Waterproofing®

- ✓ Save Up to 50% Over Other Methods
- ✓ We Solve Wet Basements **Permanently**
- ✓ Transferable Written Warranty
- ✓ Finished or Unfinished Basements
- ✓ New Construction and Existing Homes
- ✓ Dirt Crawl Space Solutions
- ✓ Fully Staffed Office to Answer Your Questions
- ✓ Fully Licensed & Insured Contractor
- ✓ **Free Written Estimates**

Get rid of that damp, musty smell in your home!

www.basementsystems.com

(905) 472-4861

© 2003 Basement Systems, Inc.

www.sdssreunited.ca

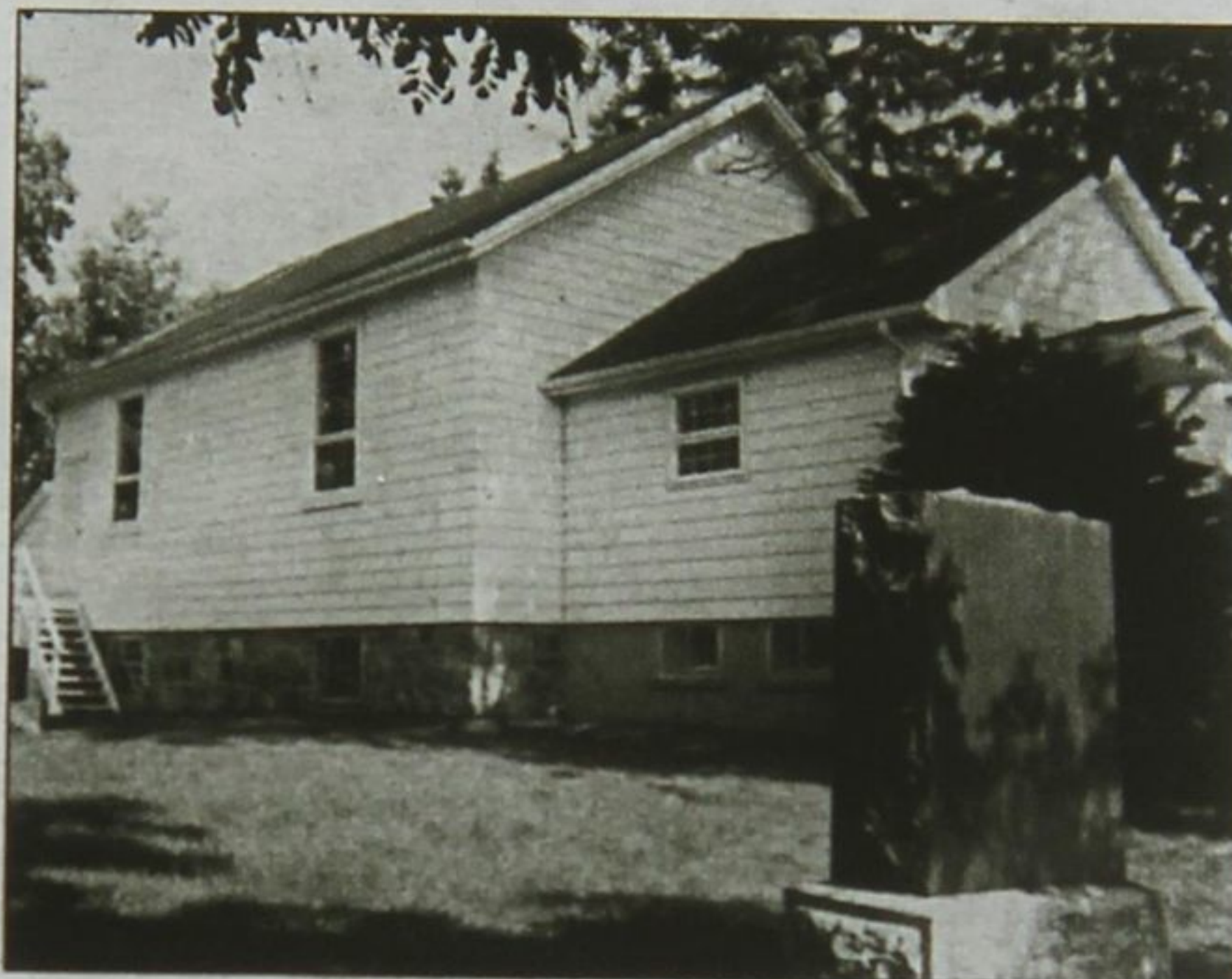
An invite to explore our heritage

By Patricia Robinson
Special to Stouffville This Month

In this issue we explore more heritage sites participating in Doors Open Whitchurch-Stouffville on June 5. For more information about these and other participating sites, visit www.doorsopenws.ca.

Lemonville United Church

Founded in 1854 and built in 1856, the Primitive Methodist Church was one of the earliest Methodist churches in the area. By 1954 the congregation had dwindled and costly repairs could not be paid for. It was declared unsafe for use and officially closed until 1961, when a new United Church congregation was formed. Numerous repair and renovation projects took place until 1969. Despite its many challenges, the church remains a focal point in the Lemonville community and is celebrating its 150th anniversary. Help celebrate the church's anniversary and heritage by visiting during Doors Open on June 5 for tours of the church and cemetery and exploring maps of the Lemonville area.



Lemonville United Church



Lionel's Farm covered dairy wagon

Lemonville Community Centre

This was originally built as Lemonville School (S.S. #9) in 1923 and was likely the third schoolhouse built in the hamlet. A second classroom and side entrance hall were added in 1960. In 1972 the school was sold and children were transported to larger area schools. The building was sold to Art Latcham and became the Lemonville Community Centre. At Doors Open you can tour the building and learn more about its history and significance in the community.

Lionel's Farm

Lionel's Farm is home to a unique collection of over 150 horse drawn wagons, carriages, buggies and sleighs dating back to the 1840s. These were used for a variety of purposes including farm, freight, circus, ambulance, milk, butcher, police and hearse. They were made by an assortment of wagon factories in Canada and the United States, many of which produce cars, trucks and trailers today. Also on site are hundreds of items associated with this early life. Doors Open is an excellent opportunity to get full viewing access to these historic vehicles.

ROSEHILL POOLS

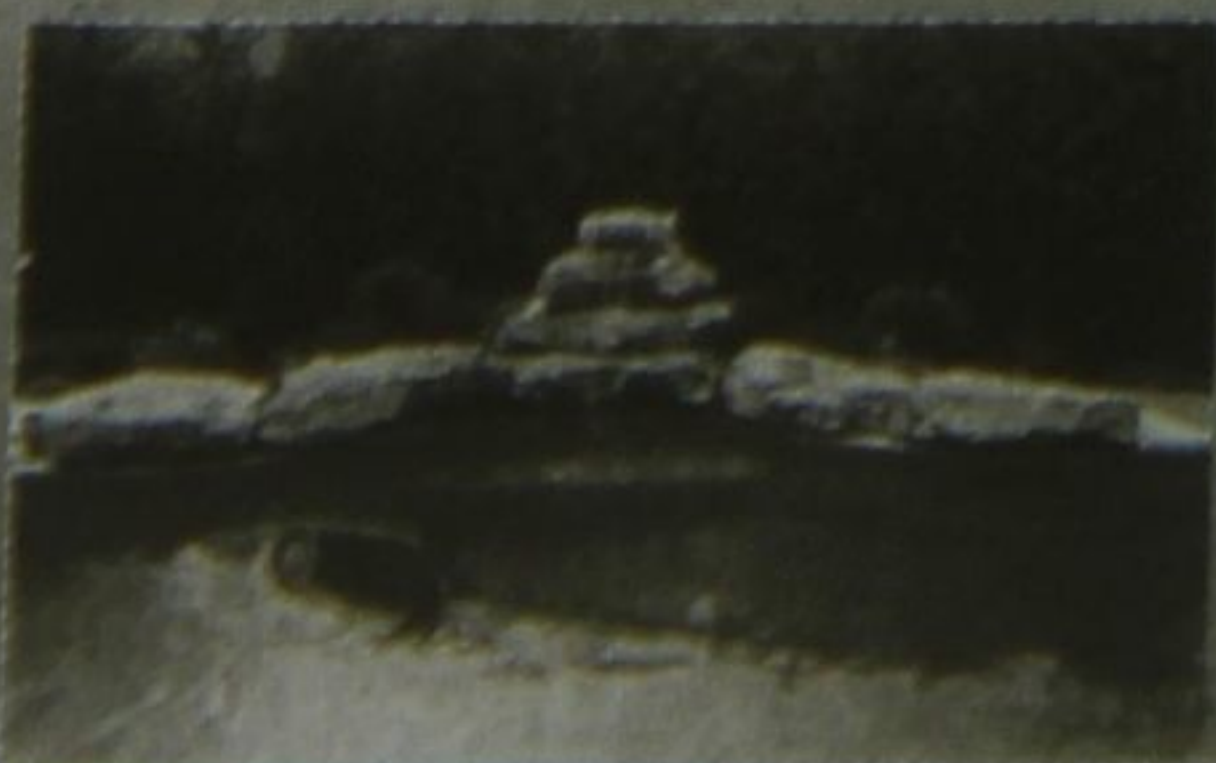
NEW POOL CONSTRUCTION AND SERVICE

Rosehill Pools has been designing and building pools in York Region and surrounding area for over 15 years. From the first shovel in the ground to your first dive in, we follow the project through every step. Magnificent design, quality workmanship and timely service are our marks of excellence.

- ✦ Custom Design & Construction
- ✦ Pool Make-overs
- ✦ Liners
- ✦ Salt Water Systems
- ✦ Service

Beat the Heat!

CALL BRIAN POWELL AT
905 642-2121
for a FREE in-home consultation



ROSEHILL
POOLS, PONDS & WATERFALLS
54 Windsor Drive • Stouffville
905 642-2121
Fax: 905 642-0132

PEPPERTREE KLASSICS

Women's Fashions, Shoes and Accessories

SPRING is here

Mention this ad and receive **20% off** regular ticket prices

Favourites such as Tribal, French Dressing Denim, Carise, Parkhurst and much more



OPEN 7 DAYS A WEEK
DROP BY & BROWSE

137 Main St. N., Markham
(905) 294-3882 • www.peppertree.ca