



Cedar Beach Pavilion on Musselman's Lake

Discover Whitchurch-Stouffville Saturday, June 5th

Heritage event 'opens doors' to past

By Patricia Robinson
Special to Stouffville This Month

Doors Open Whitchurch-Stouffville will offer rare behind-the-scenes opportunities to explore our community heritage. Starting with this issue, *Stouffville This Month* will provide brief profiles of the participating sites.

Whitchurch-Stouffville Museum

The museum covers

four acres and includes five historic structures: Bogarttown Schoolhouse and the Brown House, both built in 1857; the pioneer log cabin, built circa 1850; the barn, and Vandorf Public School, built in 1870 with renovations in 1905. The museum contains approximately 11,000 artifacts related to the historical development of our community, providing a fascinating look at life in

the former Whitchurch Township.

For Doors Open, the museum will give a special behind-the-scenes tour of areas which are normally off limits to the public, along with an exhibit and demonstration of artifact cataloguing and conservation practices. Also tour the museum's restored heritage buildings.

Clock Tower and Old Town Hall

In 1889, Nathan Forsyth built a fire hall on the present site of the clock tower. The fire hall was also used as a library, a jail and a venue for council meetings. The original wooden hose tower was replaced by the square brick clock tower in 1931. The building itself was demolished in 1967, but the clock tower remains a defining feature of our downtown and visitors will get a rare glimpse inside the structure during Doors Open.

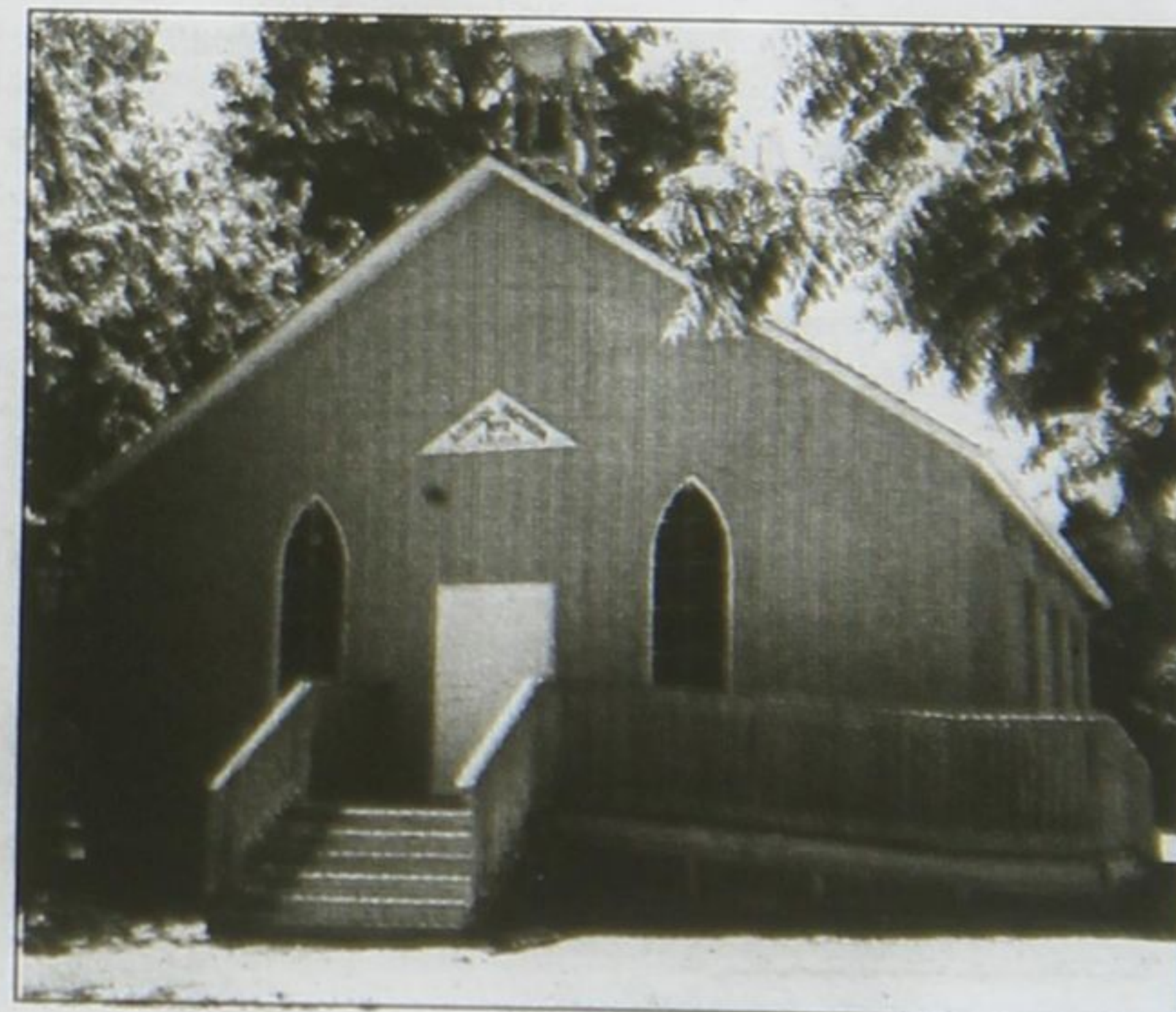
The old town hall was constructed in 1896 and

used as a marketplace, town hall and movie theatre. The Village of Stouffville and Town of Whitchurch-Stouffville used the building as municipal offices between 1959 and 1998.

Cedar Beach Park and Pavilion

This popular family resort overlooking Musselman's Lake opened in 1929. Its pavilion dance hall was a favourite Saturday night destination during the big band era. The family picnic, beach and camping areas continue to be used by visitors of all ages. Cedar Beach is one of the last holiday resorts established in the region during the early 20th century which is still operating today.

During Doors Open, which takes place Saturday, June 5, you can tour the pavilion, beach, picnic areas and playground. A display of old photographs will take you back to the big band era.

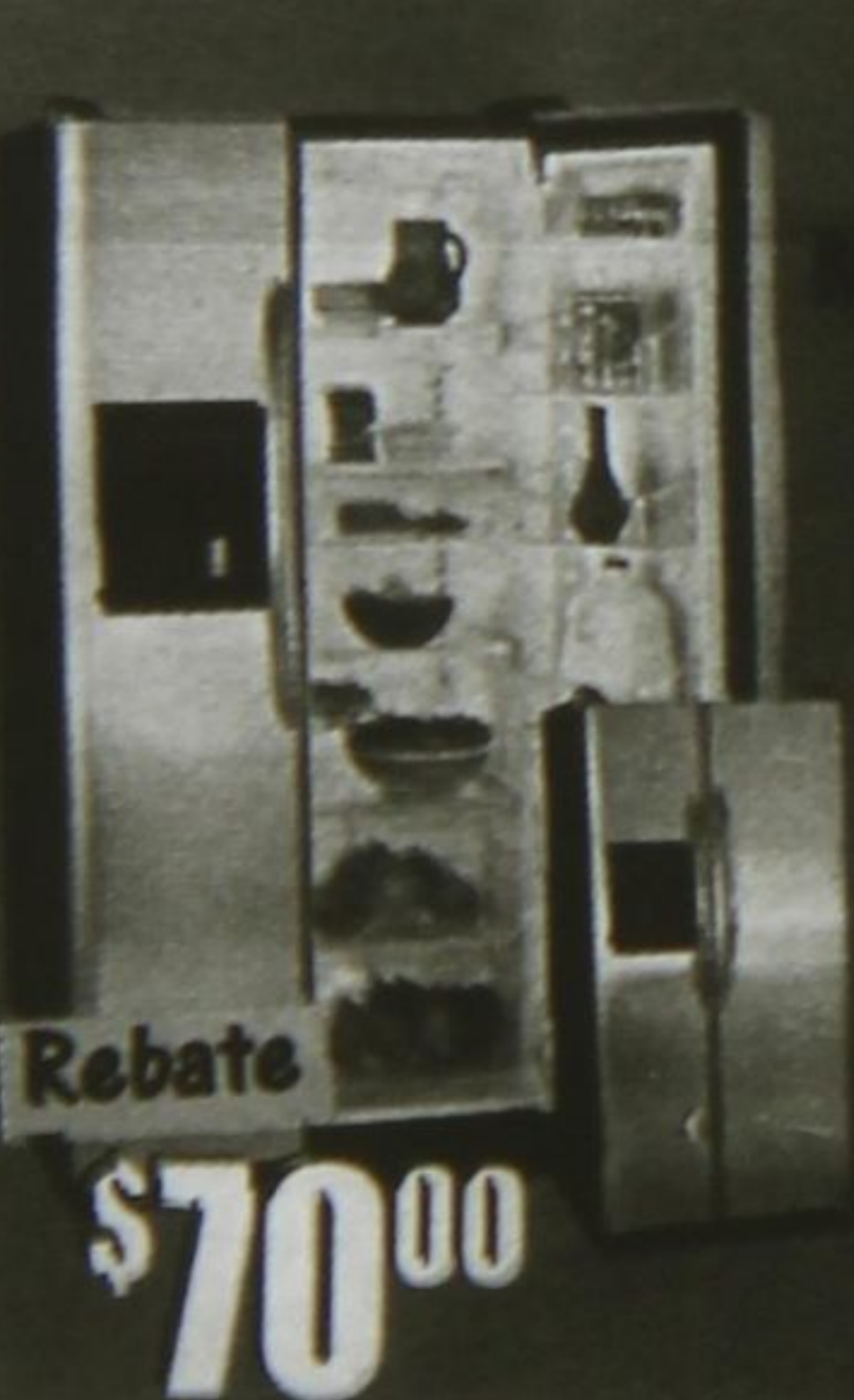


Bogarttown Schoolhouse at museum.

Frigo Electrolux

CASH REBATES

Until February 16, 2004. *On selected appliances by Mail-In rebate. See in-store for details.



Rebate
\$70.00



Rebate
\$50.00



WASHER/DRYER PAIRS
& STACKERS
Rebate
\$50.00 PER PAIR



Rebate
\$50.00



Rebate
\$30.00



DISHWASHERS
Rebate
\$30.00

plus
PST
Rebate on

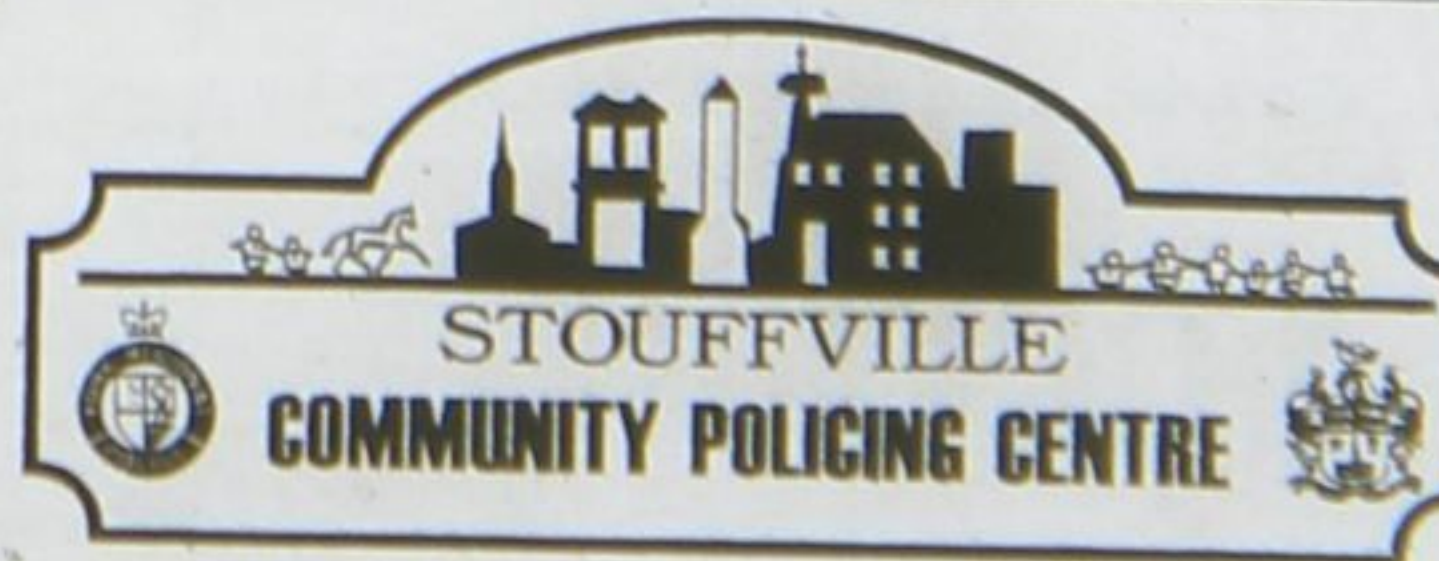
Energy Star
rated appliances

SEE IN-STORE FOR
ADDITIONAL
SPECIALS

R RANDY'S APPLIANCES LTD.
33 Ringwood Drive, Stouffville

Frigo Electrolux
HOURS:
Mon.-Fri. 9am-6pm • Sat. 9am-2pm

905
640-4747



Would like to introduce the
2004 Board of Directors

- Chair: Ruth LeBlanc
- Vice Chair: Wendy Cartwright
- Director/Recording Secretary: Barbara Smith
- Director/Past Chair: Bill Burnett
- Director: Steve Pickard
- Director: Margaret Thomas
- Superintendent: George Kydd, YRP Rep.
- Council Rep: Phil Bannon

A very special "Thank You" to all our dedicated volunteers for their commitment to the Stouffville Community Policing Centre and also their community. The efforts and contributions each and everyone of you make is greatly appreciated and the reason the Centre is such a success.

To become a volunteer or register for one of many programmes, please call today and start the new year off by taking part in making Stouffville a safer place to live.

6176 Main St. Stouffville • 905 640-4248