

TOWN OF WHITCHURCH-STOUFFVILLE

Customer Service Centre:
905-640-1900 or 1-888-642-TOWN (8696)

Automated Lines:
905-640-1910 or 1-888-642-TOWS (8697)

www.townofws.ca

111 Sandiford Drive, Stouffville, ON L4A 0Z8

NOTICE OF COUNCIL MEETINGS

COUNCIL INAUGURATION (OPEN TO THE PUBLIC)

Tuesday, December 2, 7 p.m.
EastRidge Evangelical Missionary Church,
12485 Tenth Line (Reception to follow at
approximately 8:30 p.m. at the Royal Canadian
Legion, 150 Mostar Street)

COUNCIL MEETING

Tuesday, December 16, 3 p.m.
Council Orientation Workshop (Open to the public)
Tuesday, December 16, 7 p.m.

PUBLIC NOTICES

NO OVERNIGHT PARKING DECEMBER 1 TO MARCH 31 INCLUSIVE

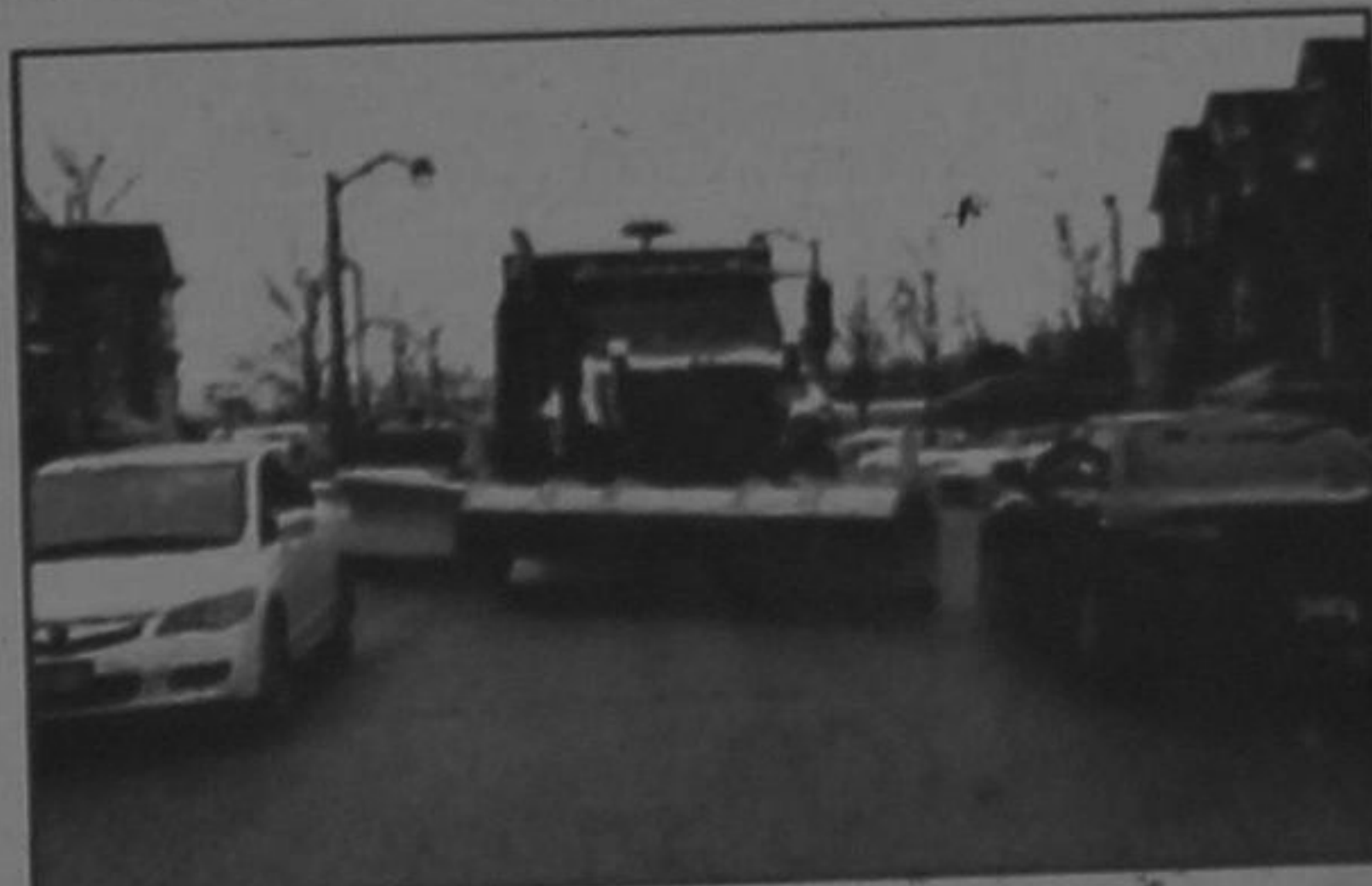
Parking is prohibited on Town streets between the hours
of 2 a.m. and 6 a.m.
Vehicles parked on the street during this period
will receive a fine of \$50.00. Inquiries regarding this
notice should be directed to Linda Mainprize, Senior
Municipal Law Enforcement Officer at ext. 2258 or linda.
mainprize@townofws.ca

TEMPORARY ROAD CLOSURES SANTA CLAUS PARADE

Saturday, December 6 from 2 p.m. to 4 p.m.
Tenth Line from Aintree Drive to Main Street; Main Street
from Tenth Line to Ninth Line; and Ninth Line to Hoover
Park

HELP US KEEP OUR ROADS CLEAR

Parking on both sides of the streets restricts access for
emergency vehicles and snowplows. Help us keep the
roads clear by NOT parking directly opposite a car that
is already parked on the road. Wherever possible, please
park in your garage or fully on your driveway. When it
snows and if possible, please try to remove your vehicle
off the road.



Avoid parking directly opposite a car already
parked on the road.



Do not park your vehicle this way. You will get a ticket.

RECEIVE YOUR WATER/WASTEWATER BILLS BY EMAIL

GO GREEN ... GO PAPERLESS...

It is easy and convenient!
Sign up today at www.townofws.ca/water-e-bill
If you require assistance, contact Customer Service
at 905-640-1900 or customer.service@townofws.ca

FOOD & GIFTS FOR TICKETS

The Town of Whitchurch-Stouffville is helping make the
holidays a little brighter for less fortunate families by
allowing parking ticket payments to be made with a
donation.

Parking tickets issued between Monday, December
1 to Sunday, December 14, are eligible to be paid by
donation. The value of the donation **must be equal to
or exceed the amount owed** on the Parking Infraction
Notice. Proof of purchase and the Infraction Notice must
be presented at the time of donation.

Donation suggestions: new unwrapped children's
toy; Non-perishable food items such as canned fruit,
vegetable, soups, stews; Clothing for infants, children
and teenagers

Donations accepted: Tuesday, December 2 through
Monday, December 15 at the Town Offices during
regular business hours (Monday to Friday, 8 a.m. to
5 p.m.) Donations will be distributed through the
Stouffville Lions Club and the Stouffville Food Bank.

TOWN EVENTS

LEISURE & COMMUNITY SERVICES
905-642-PLAY (7529)
leisure.services@townofws.ca

SPRING / SUMMER PROGRAM REGISTRATION

Begins online November 26 at 6 p.m. for Town residents
and in person at the Leisure Centre starting
November 28.

YOUTH DANCE

"WINTER FLING" (AGES 14 TO 18)

FRIDAY, December 12, from 7:30 p.m. to 10:30 p.m. 6240
Main Street
Tickets available at the Leisure Centre in advance.

YOUTH ACCESS CARDS

Sign up for a Youth Access Card to receive discounts on
youth programs and events.
Cost: \$10 (September 2014 through August 2015)

LIBRARY
905-642-READ (7323) or
1-888-603-4292
www.wsplibrary.on.ca



Season's Greetings

WHITCHURCH-STOUFFVILLE PUBLIC LIBRARY SENIORS' CHRISTMAS PARTY

Tuesday, December 2, 10 a.m. to 11:30 a.m.
Treats and Music with the Spartan Sound, the choir from
Stouffville District Secondary School.
Free Admission

For more information, please contact: 905-642-READ
(7323); 1-888-603-4292 or www.wsplibrary.on.ca

TOWN EVENTS CONTINUED

LATCHAM GALLERY
905-640-8954
www.latchamgallery.ca

BEARING FRUIT

The Collected Field
Works of Mary Catherine
Newcomb and Liz
Parkinson
Through December 23.
Pickled sculpture, printed
paper linens, a giant
sod-covered hare and
vividly flocked drypoint
prints await visitors to this
Latcham Gallery exhibition.



MUSEUM

905-727-8954 or 1-888-290-0337
wmuseum@townofws.ca

Whitchurch-Stouffville Museum & Community Centre Elves in the Workshop

Saturday, December 6, 10 a.m.

Bring your elf off to our seasonal hands-on workshop where they will
decorate freshly-baked seasonal treats. Enjoy hot chocolate and cookies
before heading out on a holiday traditions tour of the heritage buildings.



Recommended ages 5 to 10. Children \$10. Adults \$5. Pre-registration required.
Register with Play. Online or in person at the Leisure Centre.

www.townofws.ca/museum

905-727-8954 or 1-888-290-0337
14732 Woodbine Avenue, Cummer

Whitchurch-Stouffville Museum & Community Centre A Candlelight Christmas

Saturday, December 13, 6:30 p.m. to 9 p.m.



www.townofws.ca/museum
905-727-8954 or 1-888-290-0337
14732 Woodbine Avenue, Cummer

Sponsored by
Stouffville
TOYOTA