

Latcham Gallery Fall Events

By Jennifer Onlock

PA Day Workshops for ages 4 to 10 offer a variety of projects for students including drawing, painting and sculpting, with all materials included. Our Halloween free family day is on Oct. 25 from 11 a.m. to 3 p.m.

Tickets are on sale now for the annual fundraising Gala Big Night Out - Havana. Guests can bid on exceptional local works of art and handcrafted pieces, enjoy an evening of dancing, live music and delicious tapas, and show support for the arts in Whitchurch-Stouffville. Tickets are \$40 each and can be purchased through the gallery at 905-640-8954.

For more information about our exhibitions, education programs and events call the gallery, visit www.latchamgallery.ca or drop into our space at 6240 Main Street.

Jennifer Onlock is education programs manager at The Latcham Gallery.

Nathalie Quagliotto's new exhibition at the gallery, *Rules and Regulations*, is a collection of mischievous and playful sculpture and public signage.

It encourages visitors to investigate arbitrary divisions between childhood and adulthood and what it means to play. Repurposed and modified vintage playground equipment, painted in safety yellow, dominates the space, defying visitors' expectations. Collaboration and co-operation are required to avoid chaos and collision when two visitors decide to

Playtime at Latcham Gallery

By Chai Duncan

use the conjoined swing sets or merry-go-rounds.

As part of the exhibition, neon "GALLERY" signs have been placed in the community, alerting library users, as well as hockey families at the Stouffville Clippers Sports Complex, to the municipality's public art gallery. The exhibition runs until Oct. 25.

On Oct. 30, a new exhibition opens entitled *Fruits of Labour: The Collected Field Works of Mary Catherine Newcomb and Liz Parkinson*.

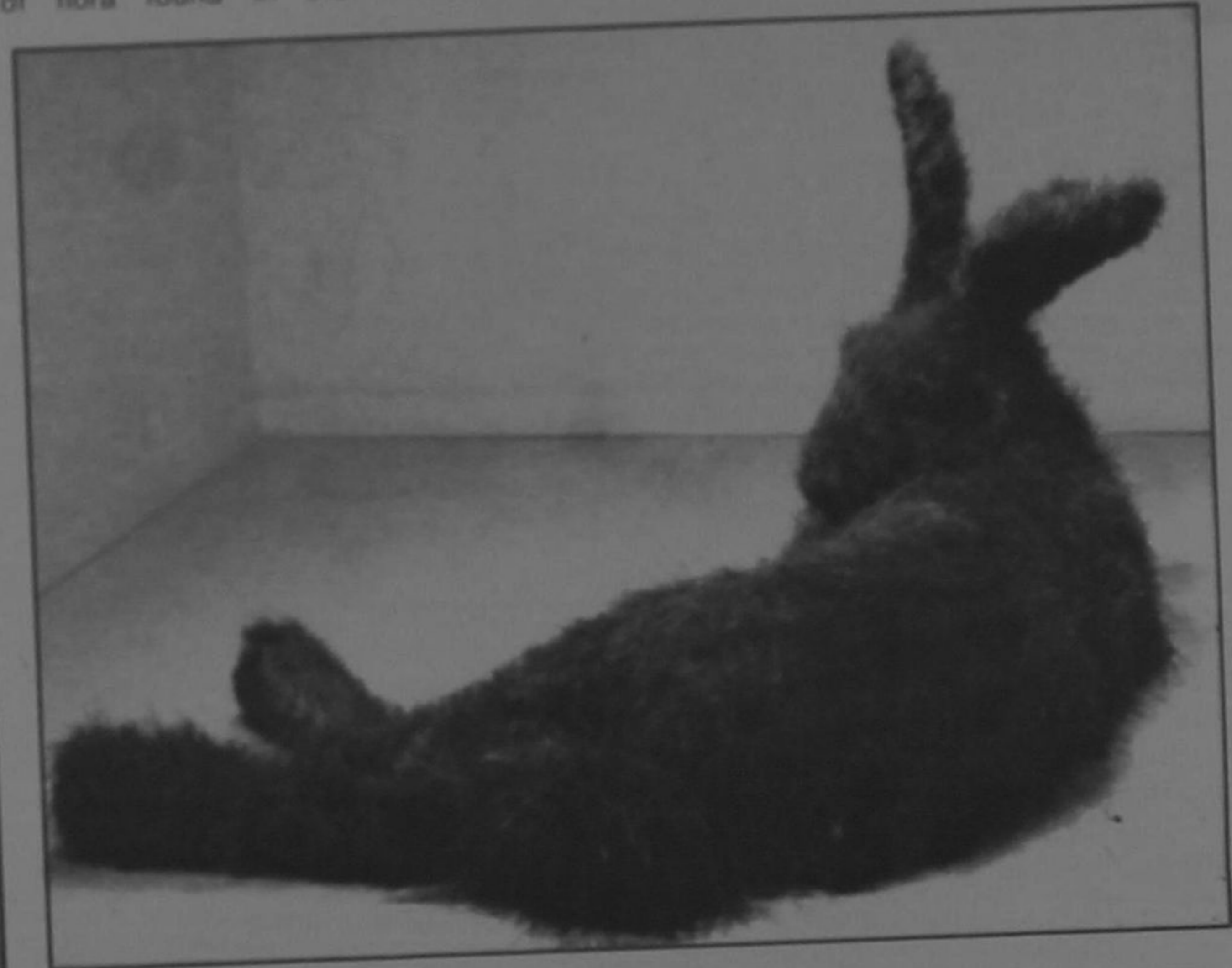
Liz Parkinson's interest in the collection, categorization and display of representations of flora found in the natural world

complements Mary Catherine Newcomb's interest in representations of fauna. The gallery will house Parkinson's series of lush, flocked, dry point prints and litho-printed bedding that examine historically recognized garden plants that are now seen as weeds. These are accompanied by Newcomb's sculptural manifestations of her gardening labours including a 10 foot long, sod-covered Great Hare and a mushroom festooned human bust.

The Gallery will host an Artist Talk Nov. 25 at 7 p.m.

Chai Duncan is curator at The Latcham Gallery.

Mary Catherine Newcomb's Great Hare sculpture will be featured in an upcoming exhibition which opens Oct. 30 at The Latcham Gallery.



STIHL

MS 170 Gas Chain Saw
\$249⁹⁵
MSRP \$279.95
 30.1 cc / 1.3 kW / 3.9 kg (8.6 lb)

RECEIVE A **FREE WOOD-PRO KIT**
 WITH THE PURCHASE OF ANY ELIGIBLE STIHL CHAIN SAW

- OILMATIC® Chain Lanyard
- Woodman® Carrying Case
- STIHL Kit
- AN 800 VALUE!

CHECK OUT THESE FALL SAVINGS

BG 55 Handheld Gas Blower
\$179⁹⁵
MSRP \$219.95
 27.2 cc / 0.7 kW / 4.1 kg (9.0 lb)

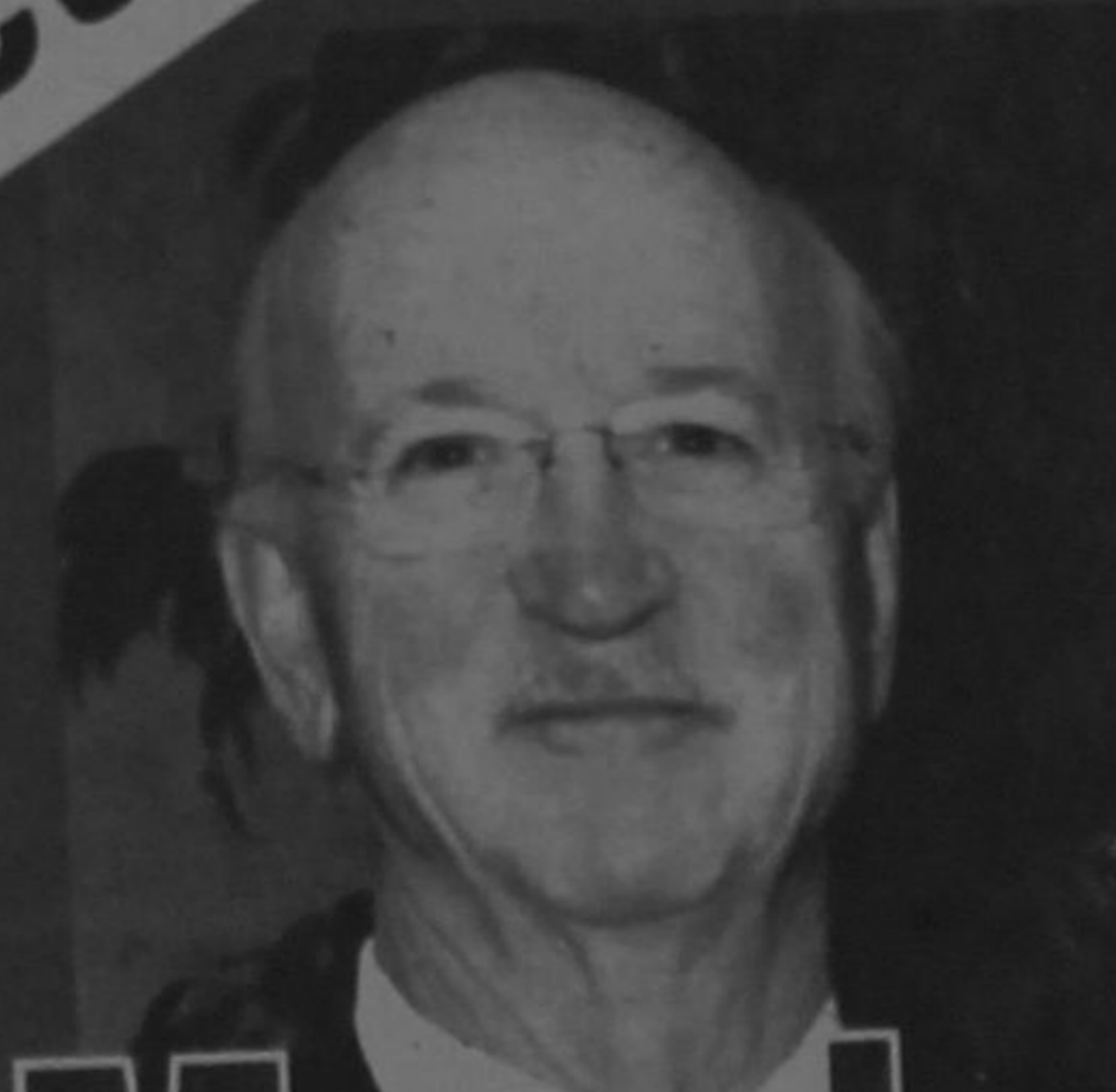
HS 45 Gas Hedge Trimmer
\$299⁹⁵
MSRP \$349.95
 18" / 45 cm / 4.7 kg (10.4 lb)

*Powerhead only. **Don't miss your chance to get the Wood-Pro Kit. Simply purchase any of the following chain saws between now and November 28, 2014 and you will receive a STIHL Wood-Pro Kit FREE. This kit includes a Woodman® Carrying Case, STIHL Kit and a replacement loop of OILMATIC® chain. An \$85 value! STIHL kits may not be exactly as shown. Eligible Models: MS 190 C-E, MS 190 TC-E, MS 170, MS 171, MS 180 C-BE, MS 181 C-BE, MS 180 C-E, MS 180 TC-E, MS 211, MS 221, MS 241 C-M, MS 250, MS 251, MS 251 C-BE, MS 271, MS 280, MS 291 C-BE, MS 311 and MS 361.

Ask our friendly staff for more product information or a **FREE DEMONSTRATION.**

#STIHLCanada
www.stihl.ca

elect



Maurice
SMITH

WARD 2 COUNCILLOR

A Business Approach to Town Business

HUTCHINSON

FARM SUPPLY INC.

www.HutchinsonFarmSupply.com

14183 Highway 48
 1/2 Mile North of
 Bloomington Rd., Stouffville
(905) 640-2692