

TOWN OF WHITCHURCH-STOUFFVILLE

Customer Service Centres:
905-640-1900 or 1-855-642-TOWN (8696)

Automated Lines:
905-640-1910 or 1-855-642-TOWS (8697)

www.townofws.ca

111 Sandiford Drive, Stouffville, ON L4A 0Z8

Town of Whitchurch-Stouffville @townofws

NOTICE OF COUNCIL MEETINGS

TUESDAY, September 7
Public Meeting Not Required

TUESDAY, September 15
Council Meeting 7 p.m.

TUESDAY, September 22
Public Meeting (if required) 7 p.m.

The agenda for the Council meetings will be available for review at the Municipal Offices, Whitchurch-Stouffville Public Library and on our website 12 p.m. (noon) the Thursday prior to the meeting.

BID DOCUMENTS

Bid packages may be obtained by registering on Biddingo at: www.biddingo.com (a subscriber and/or document fee may apply).

BID#	DESCRIPTION	BID CLOSING
WS-RFQ-15-37 (York Region)	Provision of Ombudsman Services	Closing September 17, 2015 before 1:00 p.m. EST

The Corporation of the Town of Whitchurch-Stouffville reserves the right to accept or reject all or part of any Bid and also reserves the right to accept other than the lowest Bid and cancel any Call for Bids at any time.

NOTICES

HOLIDAY CLOSURE NOTICE

The Municipal Offices are closed
MONDAY, SEPTEMBER 7
FOR PUBLIC WORKS/LEISURE SERVICES

EMERGENCIES

PLEASE CALL: 905-640-1900
OR 1-855-642-8696

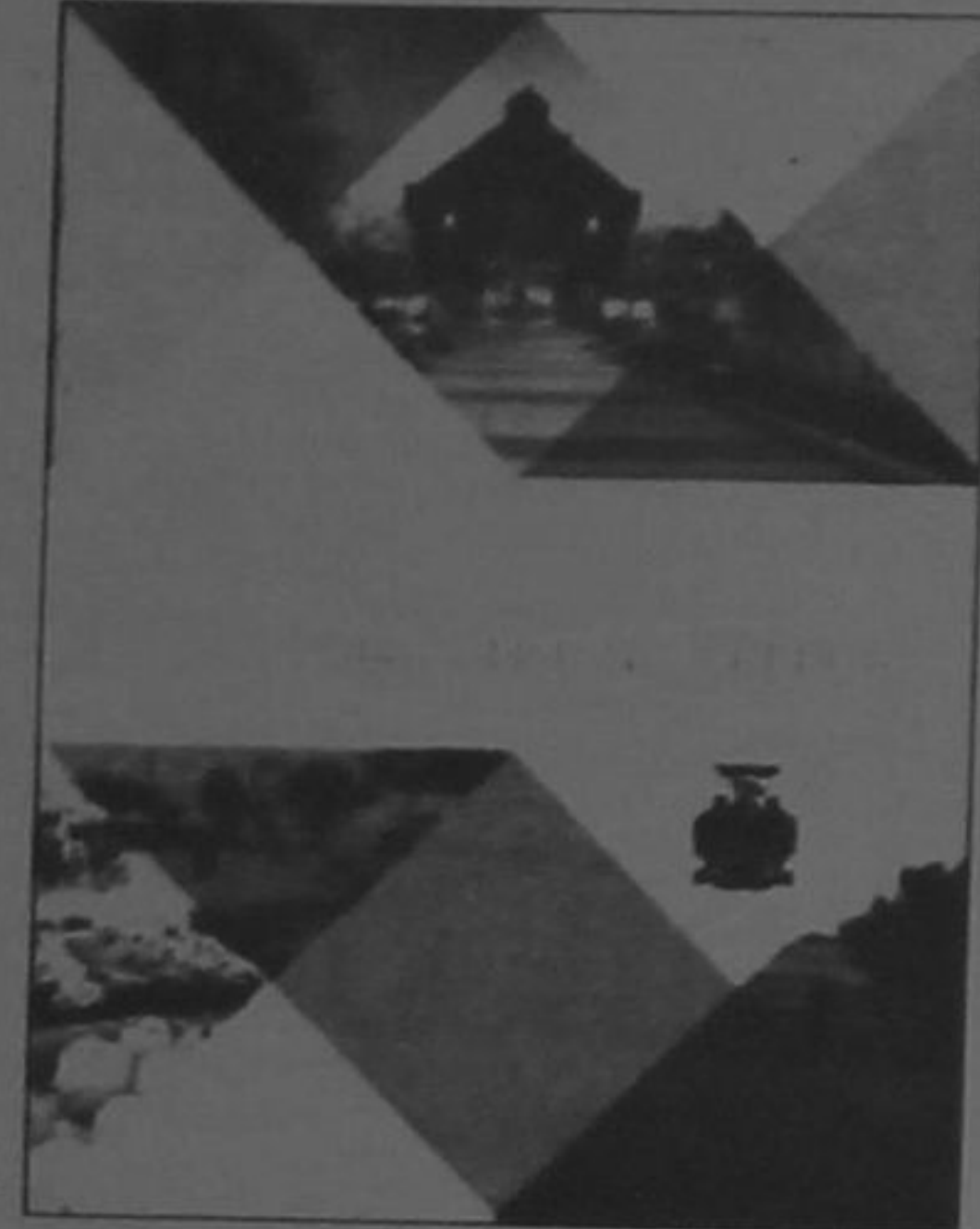
FIRE & EMERGENCY RESPONSE: 911

The Whitchurch-Stouffville Museum & Community Centre, Whitchurch-Stouffville Public Library, Leisure Centre, The Lebovic Centre for Arts & Entertainment, 19 on the Park, SoccerCity, and Stouffville Clippers Sports Complex are also closed.

The Stouffville Arena is open from
7 a.m. to 12:00 a.m.
For ice rentals contact
Samantha King at ext. 2287

The Municipal Offices reopen Tuesday,
September 8 at 8 a.m.

WHITCHURCH-STOUFFVILLE 2014 COMMUNITY REPORT



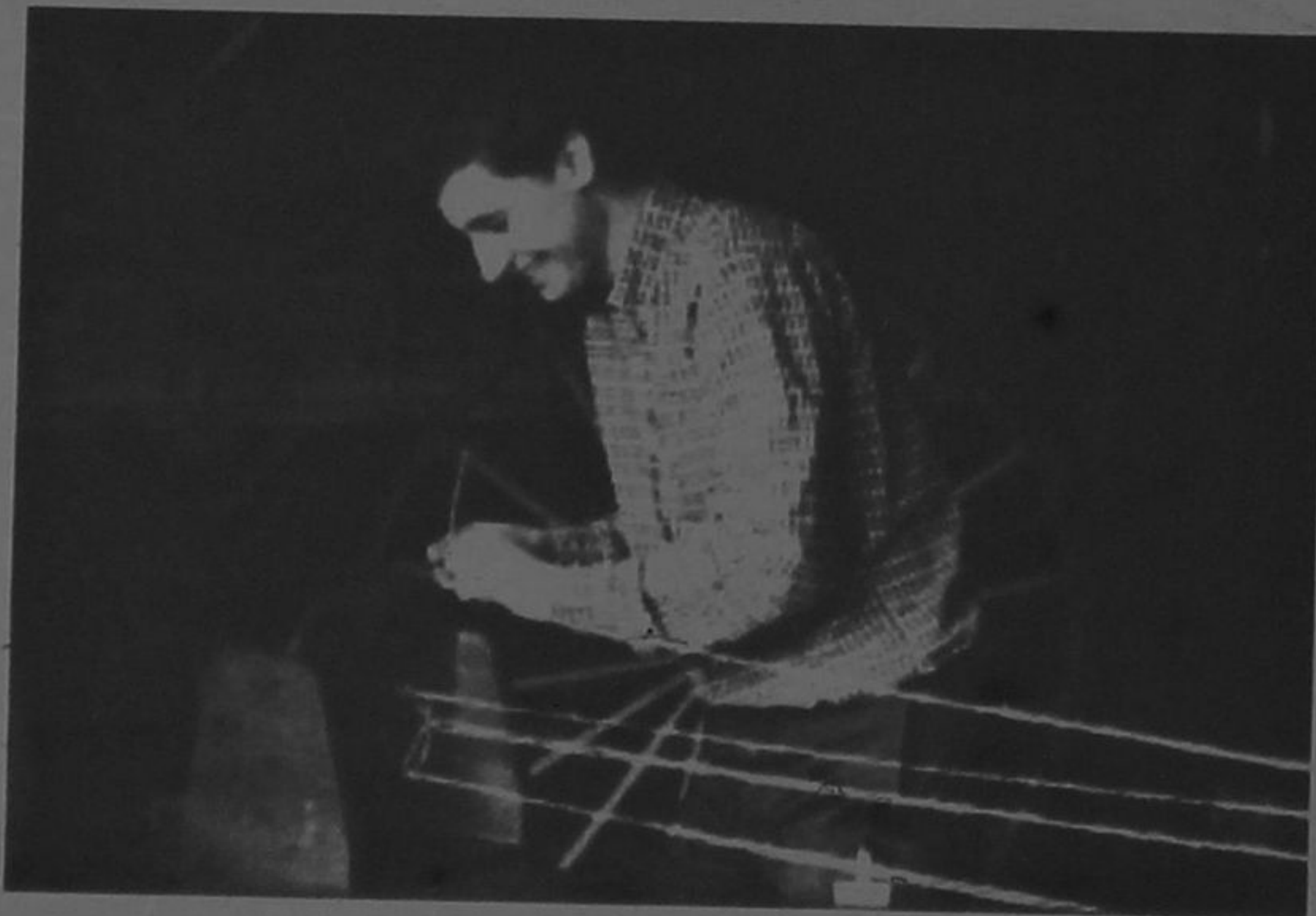
The Community Report showcases the Town of Whitchurch-Stouffville's ongoing commitment to customer service excellence and achievements on an annual basis. The 2014 Community Report is now available in PDF format on the Town Website. Hard copies are available at the Municipal Offices as well as at the Museum & Community Centre, the Library, and Fire & Emergency Services Headquarters.

UPCOMING EVENTS

WHITCHURCH-STOUFFVILLE MUSEUM & COMMUNITY CENTRE

Celebrating Fall

FREE ADMISSION AS A PART OF CULTURE DAYS



ENJOY THE DELICIOUS TASTES & SMELLS OF THE FALL SEASON AT THE MUSEUM. THE WOOD STOVE WILL BE BURNING AND APPLE RECIPES WILL BE BAKING! TRY YOUR HAND AT PRESSING APPLE CIDER, FIND A NEEDLE IN A HAY-STACK AND TRY LESSONS ON A SLATE!



STOUFFVILLE READS

Celebrate reading and community by joining in on the Whitchurch-Stouffville Public Library's first Stouffville Reads!

This fall, read the six books nominated by community champions and vote for your favourite at the Library. More details at www.wsplibrary.ca

NEED ASSISTANCE WITH GENEALOGY RESEARCH

Visit the Library on Wednesday, Sept. 2, 9, 16, 23, 30 from 1 p.m. to 4 p.m. and a volunteer will be available to help you!

THURS
10th
SEPTEMBER

LISA BROKOP

The Patsy Cline Project

19 on the Park

8pm

ALSO: CULTURE DAYS AT 19 ON THE PARK