

Art Show Season Is Here

From Lemonville to Niagara Local Artists Celebrate Spring

By Hannelore Volpe

Art lovers, get ready!

Local artist Colin Whitebread's latest paintings will be part of the Lake Scugog & Port Perry Studio Tour on the weekend of May 2 and 3.

On the same weekend, but with a Friday evening start, the Lemonville Group of Artists holds its annual exhibition and sale at the Lemonville Community Centre in Whitchurch-Stouffville.

In his work, Mr. Whitebread explores the natural environment in vivid, breathtaking colours; his painting and teaching forms a continuum. From the year 2000, while still a high school art, philosophy and religion teacher, Mr. Whitebread would take his students to Cuernavaca, Mexico on annual social justice awareness trips that also highlighted ecological concerns. The colours he encountered in this ancient land became part of his soul, and part of everything he creates.

His works are mainly in acrylics, oils and mixed media. He has also done printmaking and sculpture.

Although retired from teaching high school, he continues to teach art. He leads adult, young adult and Budding Artist programs at the Latcham Gallery, where he is a board member. He is an outreach art instructor in Stouffville's elementary schools and gives private art lessons. Mr. Whitebread has been part of the Stouffville Studio Tour for the past five

years.

In his classes, he encourages his students to break out and try new things.

He tells them to "push the medium as far as you can go, while still respecting composition and colour and theory". Art History and learning from other artists is emphasized.

After the Lake Scugog & Port Perry Studio Tour, he has another exhibition entitled *Textured Chromatic Delights* at the Niagara Pump House Art Centre, 247 Ricardo St. in Niagara-on-the-Lake. Here he has experimented with acrylic painting as it relates to texture in about 20 new works depicting natural settings. This show runs from May 2 to 31, with the opening

reception on Sunday, May 10 at 2 p.m.

Check out niagarapumphouse.ca for more information. And take a look at Mr. Whitebread's blog at colinwhitebread.blogspot.ca.

For details on the studio tour visit scugogstudiotour.ca

Meanwhile, back in Lemonville, The Lemonville Group of Artists are ready for their annual show and sale. The opening reception is on Friday, May 1 from 7 to 9 p.m. and the show continues on the Saturday and Sunday from 10 a.m. to 5 p.m.

This is a show that not only heralds the beginning of spring, it is also filled with surprises every year, as members keep on learning and exploring a wide variety of media and new ideas at their weekly meetings. The group's members draw their

From the year 2000, while still a high school art, philosophy and religion teacher, Mr. Whitebread would take his students to Cuernavaca, Mexico on annual social justice awareness trips that also highlighted ecological concerns.

The Lemonville Group of Artists show and sale not only heralds the beginning of spring, it is also filled with surprises every year, as members keep on learning and exploring a wide variety of media and new ideas at their weekly meetings.



Some members of the Lemonville Group of Artists (back row left to right): Gerry Graham, Diane Passafiume, Morven Crothers, Lynn Westaway, Betty Cowan, June Probert; front row: Diana Bullock, Alicia Ruth Parry

inspiration both from guest artists and from each other.

"Friendship and mutual support are keeping us going," noted group member

Diana Bullock. "The idea is to challenge the group to grow further."

The group's 22nd annual exhibition in Lemonville features the works of founding member Eileen Christensen, as well as those of Diana Bullock, Sandra Cole Burke, Betty Cowan, Morven Crothers, Isobel Emmerson, Gerry Graham, Roger Howell, Joan Humphrey, Daniel Hutton, Alicia Ruth Parry, Diane Passafiume, June Probert, Elaine Teillet (the group's newest member), Lynn Westaway and Rosemarie Wright.

You'll see an eclectic collection of works along with smaller works and original greeting cards. Works in sumi-e (Japanese brush painting), woodblock prints, wax resist, along with paintings in acrylics, oils and mixed media and more will fill the exhibition space.

The show takes place at The Lemonville Community Centre, 13453 McCowan Road, south of Bloomington Road.

Over the past several months, the group has shown its works at the Markham Theatre, the local municipal offices and the McLean Community Centre in Ajax.

The week after this annual exhibition, the group's works will be displayed at the Newmarket Theatre until the end of June.

Over the past several months, the group has shown its works at the Markham Theatre, the local municipal offices and the McLean Community Centre in Ajax.

Check out their website at www.LemonvilleGroupofArtists.com or call 905-640-3965 for more information.

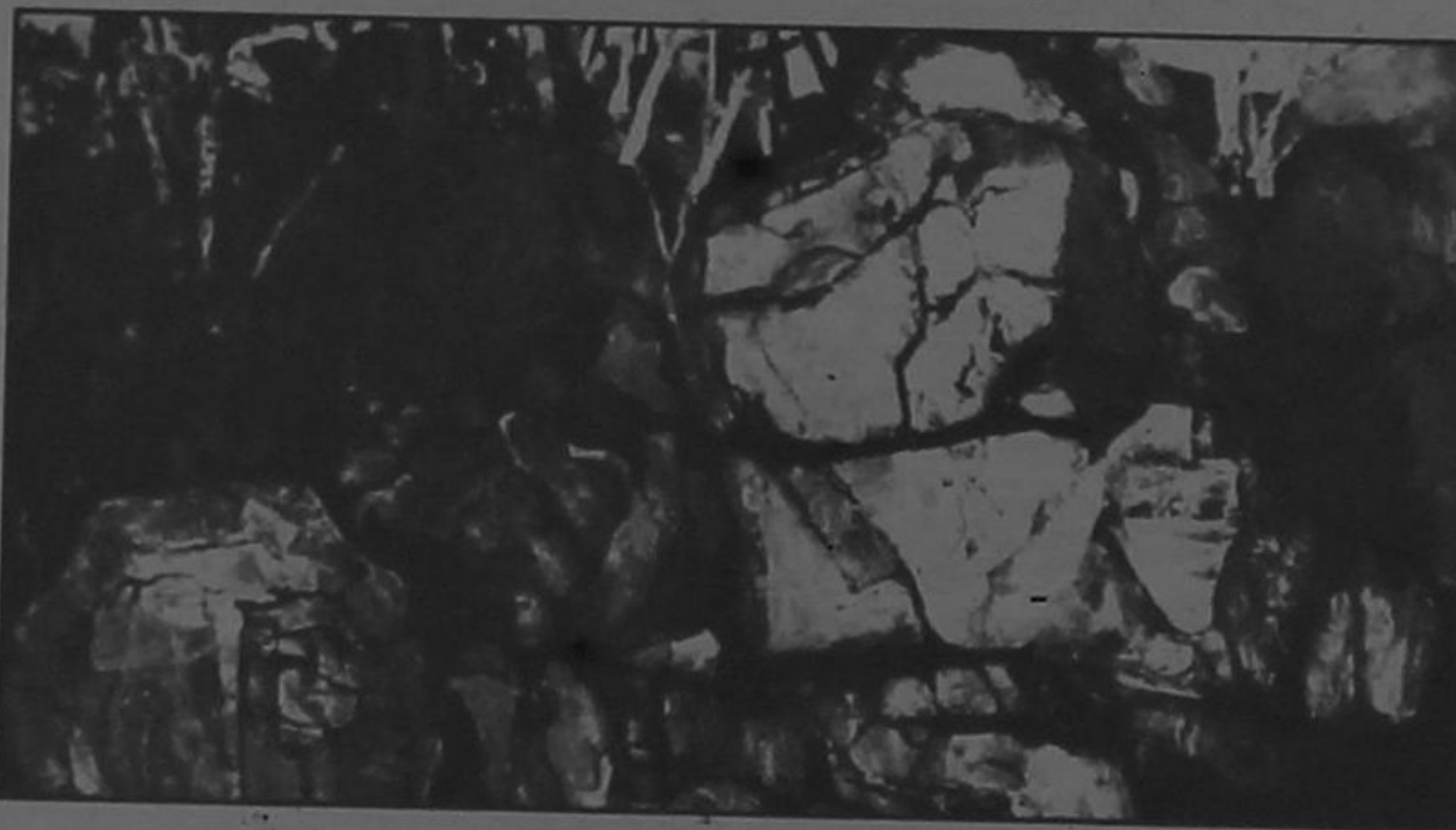
THE Fuckle Pickle
RESTAURANT & DELI

MAY SPECIAL!

Ribs & Wings Dinner Combo
Includes 1/2 rack back ribs, chicken wings, choice of potatoes & veggies **\$17.95** dine in only

FULLY LICENCED

Open 7 Days a Week • Fast Take Out
6302 Main St. • 905-640-5707



Lake Scugog
Studio
Tour

May 2 & 3, 2015
10 am - 5 pm



31 juried artists and artisans

FREE ADMISSION

Pick-up a brochure / map in downtown Port Perry

Info: 905-925-1343 • scugogstudiotour.ca



Colin Whitebread's breathtaking use of colour and form have been inspired by frequent visits to Mexico.