

# Knitting A Stronger Community

Celebration brings generations together

By Kinjal Dagli Shah

In keeping with the town's image of a community that cares, more than 150 Stouffville residents braved the snowy weather to attend the WS YOU 177 celebration at the Stouffville Legion on Feb. 21.

Thirty-five people of all ages were presented with orange scarves of caring.

"There were many highlights," said Brian Puppa, director of programs at the Legacy Project, which spearheaded the event.

"There was a standing ovation when long-time Stouffville resident Dianne Darling was presented with an orange scarf of caring by head of the Legacy Project, Susan V. Bosak. Dianne has been active in the community for years, heading Welcome Wagon and making people feel a part of the community. When Susan's parents moved to Stouffville from Winnipeg, it was Dianne who made them feel right at home," Brian noted.

"Dianne has just been diagnosed with cancer. Susan presented her with a scarf specially made by Natrice Rese in Timmins; an amazing woman who has worked all her life supporting those in need. The positive energy in the scarf will hopefully support Dianne and her family." Many, including Mayor Justin Altmann, were moved by what the orange scarves represented.

"When long-time resident Diane Ward presented Mayor Justin Altmann with one, it brought tears to his eyes," said Brian, adding that the celebration included several children and teens.

"The children enjoyed making the caring cards for local seniors who can't get out. One person in the community who had previously received an orange scarf of caring, Tom Winters, is in the hospital. His granddaughter, Emily Winters, attended the event, made a special big card for him, and went around the room getting everyone to sign it for him."

The intergenerational Whitchurch-Stouffville community mural, created by local students, elders and community leaders, was unveiled as part of the celebration.

"It will be refined in upcoming weeks as we consult with the community, but what it did was start a dialogue about what really matters to us as this community grows. Community begins in conversation, and that's what we're helping to make happen."

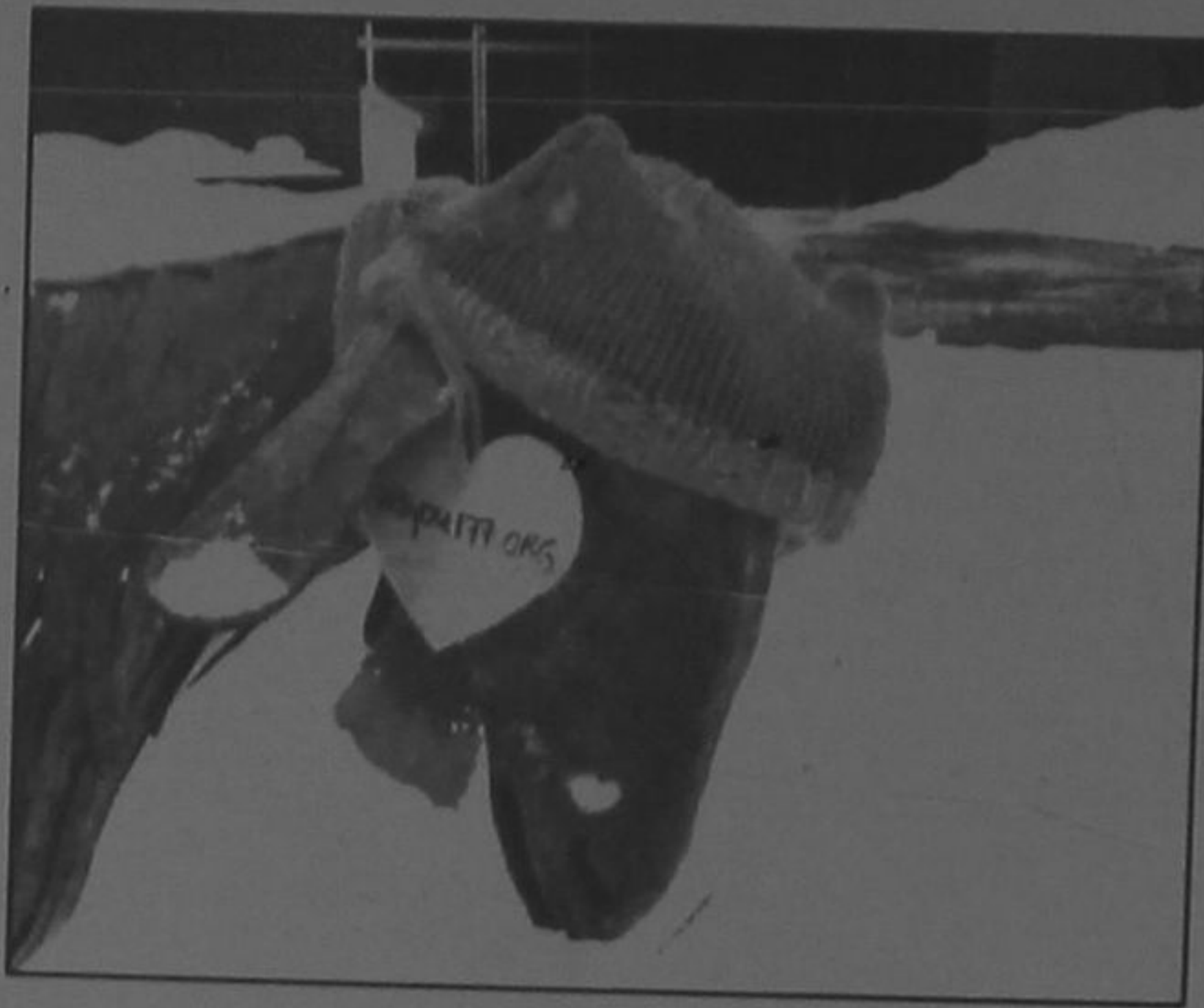
All this, while munching some tasty appetizers from a buffet donated by local chef Srikanth.

"The buffet had everything from chicken kebabs to salmon bruschetta and tiramisu. Srikanth donated all his time and the food because he cares about his new community of Whitchurch-Stouffville. His dream is to open a restaurant here," said Brian.

Virbala and Rajendra Patel of Stouffville were among those who came out to celebrate the spirit of community.

"I had crocheted an orange scarf as part of the knit-a-thon, so I had donated it beforehand," said Virbala. "It was a really nice event to have been a part of. We were impressed to hear the speeches by the teenagers, and the initiatives taken by them at such a young age."

Write to Kinjal at kinjal.dagli@gmail.com



Even Bill Lishman's goat on the Latcham Gallery's sculpture walk got into the community spirit by sporting a snazzy orange hat, made by Susan Biosvert, for the WS You 177 celebration Feb. 21. Susan Boisvert photo

## Stage Show



Whitchurch-Stouffville Museum is currently featuring a fascinating exhibition entitled Small Town Theatres.

The exhibit, which is on loan from the Archives of Ontario, takes a closer look at theatres, their owners and some of their patrons. Artifacts from the museum's own collection are also on display as part of the show, which runs until April 30.

The museum is located at 14732 Woodbine Ave. in Gormley, north of Vandorf Sideroad.



## Condo Living in Stouffville

Launching

# Final Phase

LIMITED NUMBER OF SUITES AVAILABLE

- 5 golf courses minutes away
- Steps to Main Street Stouffville
- Arts & Culture • Restaurants & Entertainment
- Sports & Recreation • Hiking Trails • Wineries • Shopping • Heritage Railway
- All Amenities • Walk to Transit • 3 Minutes to GO Station • 10 Minutes to Hwy 404 • 15 Minutes to Hwy 407
- Indoor Swimming Pool, Fitness Room & Whirlpool • Library • Games & Media Room • Lounge

FROM  
**\$ 259,900**

Owning a home has never been easier

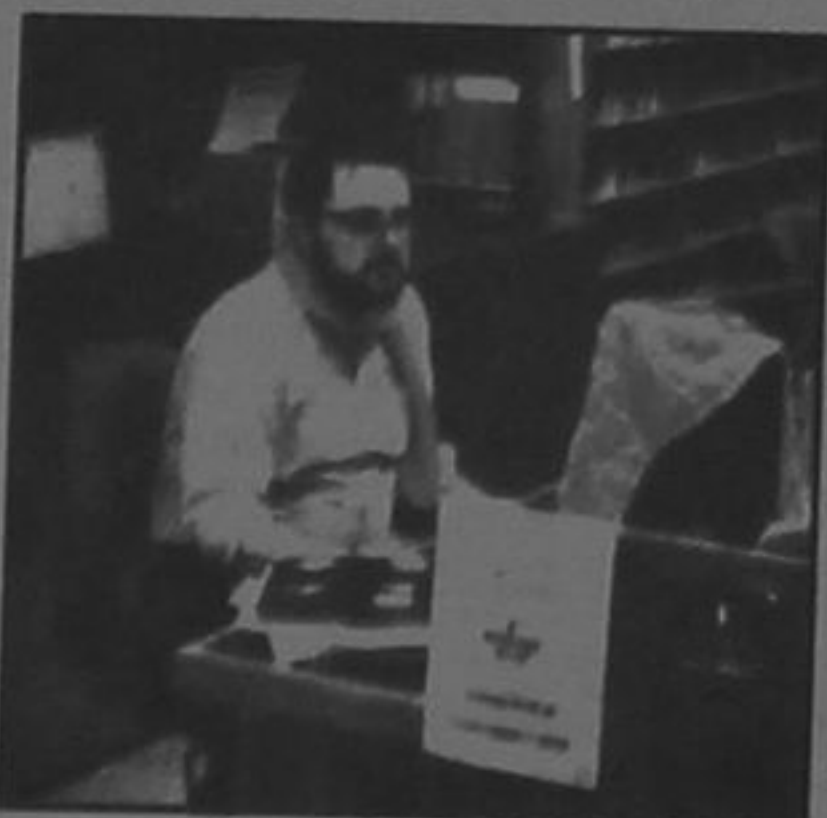
**CHERRYWOOD**  
HOMES

Co-Brokers are Protected

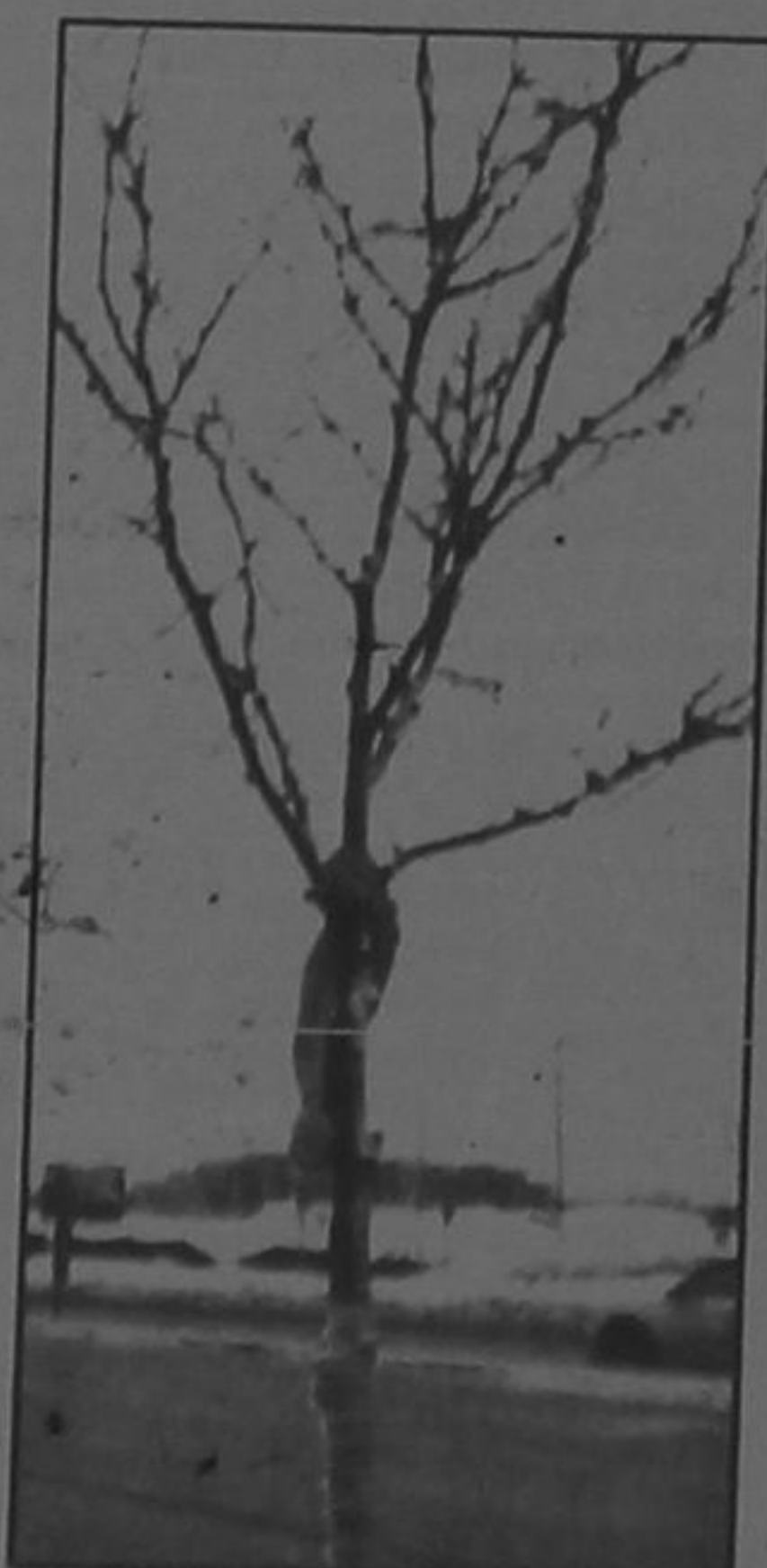


481 Rupert Ave. Stouffville  
**905-640-7571**

[www.glengroveonthepark.com](http://www.glengroveonthepark.com)



Jeff Bennett, technical services assistant at Whitchurch-Stouffville Public Library, shows his true colours during WS YOU 177 celebrations. Brian Puppa photo



A splash of orange brightens up another frigid winter day. Diane Ward photo