



Vivian Risi
Broker of Record



Michelle Risi
Exec. VP, Broker/Manager

STOUFFVILLE OFFICE

5859 Main Street, Stouffville, ON L4A 1A5

Office: 905.642.6333 | Fax: 905.642.5730

People Come First...And It Shows!



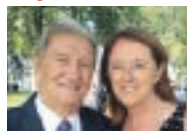
#1 Canada's Brokerage

Your Community REALTY

ROYAL LEPAGE

BROKERAGE INDEPENDENTLY OWNED & OPERATED
www>YourCommunityRealty.com

CONTACT MICHELE AND FRANK JAGO



if you are thinking of Selling your Home. Michele and Frank Jago have Proven Results!

Michele or Frank Jago, Sales Representatives

WWW.JAGOHOMES.COM

416.986.1502

Email mjago@trebnet.com

LIFETIME AWARD OF EXCELLENCE WITH ROYAL LEPAGE YOUR COMMUNITY REALTY



Carol Taplin*

Direct 416-518-6422 • Office 905-642-6333

President's Gold Award 2015

OPEN HOUSE SAT & SUN 2:00-4:00

Tastefully Decorated 3+1 Bed and 4 Bath Home in Great Family Neighbourhood. Hardwood, Designer Kitchen, Newly Renovated Basement - Too many extra's to mention. Shows Beautifully and is Close to All Amenities.

50 IRONWOOD CRESCENT

- Selling Stouffville for over 25 years
- Expert Promotion & Exposure where it counts
- Virtual tours on every listing
- Proven track record



Call...Mike Marsden Today for Your Free Evaluation and Marketing Strategy

416.917.0890 mmars@rogers.com



REMEMBER...

You Pay Nothing Until Your House Sells.
Proven Track Record



SHOWS BEAUTIFULLY.



COMPLETE YOUR BSMT

22 Rosalie Ave. 1 1/2 Storey Home in Very Sought After Neighbourhood in Downsview, 3BR 1BTH New, Kit, Hrdwd, Ceramic, Windows, SS Apps. Main Floor Master with New 4 Piece, Outstanding Lot Perfect For Your Gardening.

Contact Mike Marsden
416.917.0890
mmars@rogers.com



BUILD YOUR DREAM HOME



FISH, HUNT FARM

751 Zephyr Rd. 209 acres of mixed land approximately 30 ac being farm 50 ac workable, surround yourself with the nature has. Fantastic opportunity to own your own piece of heaven. Close to Golf, Ski, Towns.

Contact Mike Marsden
416.917.0890
mmars@rogers.com



REAL ESTATE ACADEMY™

THINKING OF A CAREER IN REAL ESTATE?

Royal LePage Your Community Realty has an exclusive Real Estate Academy designed to help you succeed! Contact us today.



Adult Lifestyle Bungalow Living 11, Seve's Approach, Ballantrae, Stouffville

Rare Opportunity To Acquire This "Pebble Beach" • 2 Bed Bungalow, C 1470 Sq. Ft. Open Plan Concept • Perfect For Singles Or Couples • New Shingles 2014. New Furnace/Ac 2016 • Come See To Appreciate!

\$655,000

Call Or Email Gary Hodder Directly
M: 289 221 8081

Em: garyhodder@royallepage.ca

Property Featured At : www.ballantrahomes.com



Gary Hodder*

4 SEASON COTTAGE



SEABRIGHT. 1 ROUND. LAKE. BAY

246 BURNT DAM RD.

Perfect and Year Round, Minic, PLE Maintained Rd. 2BR, 1BTH, New Kit, Bath Hydro Panel, Sepctic, panelling. Your Own Dock, Awesome Fishing, XXX Scenic Tours, 5min From Town and Full Shopping.



Mike Marsden,
Sales Representative
416.917.0890

Email mmars@rogers.com



Steve Lummiss*



Brian Klem**



Frank Jago*

Michele Jago*



Howard Lee*

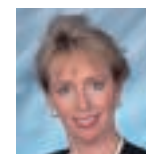


Debbi Jefferson*



Len Powell*

Debbie Powell*



Carol Taplin*



Jeff Elder*



Robyn Gourley*



Jennifer MacLean*



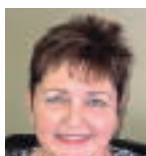
Mike Marsden*



Deanna Pescadar*



John White*



Lynda Sargeant*



Themis Gregoriou*



Gary Hodder*



Addie Gallop*



Anyela Marin Florez*



Giovanni Moncada*



Michael Murphy*

Toronto
Downtown Office
416.637.8000

Unionville
Markham Office
905.940.4180

Thornhill
Office
905.889.9330

Richmond Hill
Head Office
905.731.2000

Vaughan
Office
905.832.6656

Woodbridge
Office
905.832.6656

Aurora
Office
905.727.3154

Stouffville
Office
905.642.6333

Keswick
Office
905.476.9543

Sutton
Office
905.722.3211