



905-640-1200

www.gallorealestateltd.com

We work for you.



120 LAKEWOODS DR, STOUFFVILLE

PRESTIGIOUS LAKE WOODS ESTATES! 882 FT FRONTAGE!

Great Investment! Sprawling Bungalow On 6 Ac In A Park Like Setting. 4376 SF, Main Flr In Law Suite, Prof. Landscaped, 25x45 Ft Garage. Ideal For The Hobbyist! Call For A Private Viewing Rhonda Barresi* 905-640-1200



OPEN HOUSE SAT & SUN 2-4PM

15 WINDRIDGE DRIVE, MARKHAM

WHEN LUXURY, LOCATION, LOT & LAYOUT MATTER!

Stunning custom-built bungalow loaded with architectural features that makes it an entertainer's dream home! Gourmet kitchen, butler's pantry, huge dining room, voluminous Great Room, 3 spacious bedrooms plus office/den, plus over 2500 ft2 unspoiled walk-up basement on 70 x 156 lot. +++



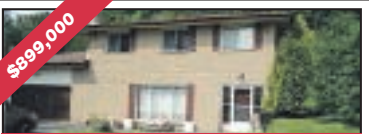
\$1,229,000

WALK TO GO TRAIN!

14 ALBERT ST, STOUFFVILLE

CIRCA 1920'S - ALBERT ST.

Impressive home. Spacious rooms - gourmet kit., s/s appliances, open to fam rm. Wall of windows, skylights, potlights, hardwood flrs thru-out, original trim, 3+1 bdrms, 5 renovated baths, 2 gas FPs, Bsmt apt, sep entrance, fabulous lot! Coachhouse - call for details Kim Reesor*



\$899,000

13506 HWY 48, STOUFFVILLE

OVER 1/2 ACRE COUNTRY LIVING!

Great Location To Enjoy Private Home, Close To Town. Spacious 4 Bedroom Sidesplit, 2 Car Garage. Easy Access To 404 and 407. Call Kim Reesor* or Jenny Reesor* 905-640-1200



\$839,900

14224 WARDEN AVE, STOUFFVILLE

PRIME LOCATION! COUNTRY LIVING!!

Fabulous 250x150' Lot! Original Farmhouse. Workshop - Garage. Gas Heat! Live In / Renovate Or Build Your Custom Home. Loads OF Potential. Across From Estate Homes & Near Golf Course! Call To View Kim Reesor*

People associate Gallo Real Estate Ltd. with expertise, trust, and personalized service

Jenny Reesor
Sales Representative

905-640-1200 or 416-879-7081

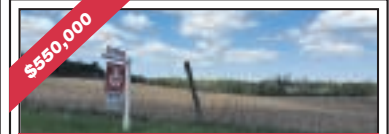


\$1,299,000

187 SECOND ST, STOUFFVILLE

HEART OF STOUFFVILLE

Sought After Street! Fabulous Yard, Privacy, Trees, Gardens! Unique Open Concept! Mfr Mbr, Ens Plus 3 More Bdrms & Vaulted Ceilings! Hdwd Flrs, Skylights, Fin Bsmt, Covered Porch! Walk To Go Train, Schools, Restaurants, Parks! Call Kim Reesor* To View 905-640-1200



\$560,000

REGIONAL HWY 47, UXBRIDGE

8 ACRES

BUILD YOUR DREAM HOME

Call Kim Reesor* or Jenny Reesor*

905-640-1200



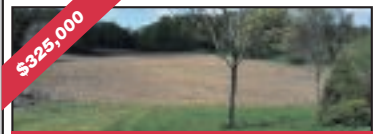
\$219,900

LOT 22 CENTENNIAL PARK, KAWARTHA LAKES

100 ACRE WOODS LOCATED IN KAWARTHA LAKES AREA

Call Kim Reesor* For Details

905-640-1200



\$325,000

4300 FRONT ST, UXBRIDGE

3 ACRES BUILD YOUR OWN HOME!

Call Kim Reesor* For Details

905-640-1200



\$315,000

2 RAYMERVILLE DRIVE, MARKHAM

FANTASTIC LOCATION

"Hampton Green" 8th Flr Overlooks The Ravine! 1 Br, Open Concept! Great Amenities, Indoor Pool, Tennis Courts, Gym, Close To Markville Mall. Flex Possession. Call Jenny Reesor* or Kim Reesor*



OPEN HOUSE SUNDAY 2-4PM

272 DEBORRAH PLACE, STOUFFVILLE

COURT LOCATION!

Fairgate bungalow! Premium Lot! Just move in! Country kit., w/o to deck, hardwood flr, finished bsmt, br. + bath, great place to entertain family & friends! See you there - Call Kim Reesor* To View 905-640-1200



\$24 SO FT NET

FOR LEASE

5710 MAIN ST, UNIT 3, STOUFFVILLE

COMMERCIAL UNIT ON MAIN ST

Fantastic opportunity to Lease a 21.8x141 foot unit in Prime area of Stouffville. You don't want to miss out! Call Jenny Reesor* today for details or to view. 905-640-1200

BRANDON CROSSEN

I'm on Your Side

Complementary

- ✓ Professional Home Staging
- ✓ Home Evaluation
- ✓ Mortgage Approval
- ✓ Home Inspection

14 years in the

Real Estate industry

25 years living in Stouffville

RE/MAX

All-Stars Realty Inc.,
Real Estate Agency

647 239 5044

BrandonCrossen.com

Becrossen@gmail.com

6323 Main St. #2, Whitchurch-Stouffville,
Ontario, L4A1G9



Sales Representative

27 McMullen Drive, Ballantrae

Open House Tonight 5-8PM



Don't Miss Your Opportunity At This 3+2 Bd Executive Bungalow On A Massive Corner Lot (31,134 Square Feet) In One Of The Most Sought After Communities In Ballantrae Just South Of Ballantrae Gc (3rd Tee Deck Visible From The Front Steps). 4 Car Garage. 9 Car Driveway. New Walnut Kitchen Counter Top Fin. Basement. 4 Washroom. Over 3,000 Square Feet Of Total Living Space... Why Live On The Golf Course, When You Can Have All This Home And Land With Zero Monthly Condo Fees!

\$1,150,000