



ART DIVERS*
LESLEY DIVERS*
 *Sales Representative
(905) 940-4180



Scan For More Info



Renata Bajric*



Michelle-Renee Divers R.C.M.*

**Top 1% of Royal LePage sales force on a national level based on earnings

21 MUIRFIELD TRAIL ~ OPEN HOUSE SAT/SUN 2-4 ~ NEW LISTING! ~ \$1,628,000



- *Angus Glen East Village
- *Stunning Curb Appeal
- *Attached 2-Car Garage & Full Sized Private Double Driveway
- *Huge Deck Features Built-in Hot Tub, Planters with Individual Flower & Bed Watering Lines & Low Voltage Lighting
- *Approx 3,100 sf Plus Finished Lower Level
- *Open Concept Customized Home
- *Appliances replaced in 2015!
- *Hardwood & Ceramic on 2 Floors
- *Inground Sprinkler System
- *New Roof 2014

65 THE FAIRWAYS ~ OPEN HOUSE SAT/SUN 2-4 ~ NEW LISTING! ~ \$1,638,000



- *Angus Glen East Village!
- *Premium 3-Car Garage
- *New Steel Garage Doors 2014
- *Professional Low Maintenance Landscaping
- *New Exterior Front Railings 2015
- *All Interlocking Relevelled 2016
- *Stunning New Master Ensuite and Main Bath 2014!
- *High End Ultraline Professional Gas Stove
- *Inground Sprinkler System
- *9 Ft Ceilings on Main Floor
- *Walk to Public Transit, Shopping, Rec Centre & Pierre Trudeau High School!

**Top 1% of Royal LePage sales force on a national level based on earnings



I'm on Your Side

- Complementary**
- ✓ Professional Home Staging
 - ✓ Home Evaluation
 - ✓ Mortgage Approval
 - ✓ Home Inspection

14 years in the Real Estate industry
25 years living in Stouffville

RE/MAX

All-Stars Realty Inc.,
 Real Estate Agency

647 239 5044

BrandonCrossen.com

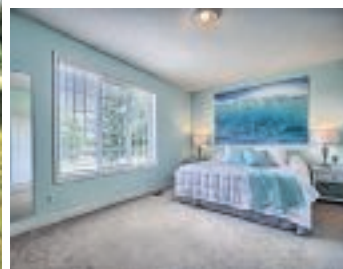
Becrossen@gmail.com

6323 Main St. #2, Whitchurch-Stouffville,
 Ontario, L4A1G9



Sales Representative

72 McMullen Drive, Ballantrae
Open House Sunday 2-6PM



Don't Miss Your Opportunity At This 3+2 Bd Executive Bungalow On A Massive Corner Lot (31,134 Square Feet) In One Of The Most Sought After Communities In Ballantrae Just South Of Ballantrae Gc (3rd Tee Deck Visible From The Front Steps). 4 Car Garage. 9 Car Driveway. New Walnut Kitchen Counter Top Fin. Basement. 4 Washroom. Over 3,000 Square Feet Of Total Living Space... Why Live On The Golf Course, When You Can Have All This Home And Land With Zero Monthly Condo Fees!

\$1,150,000