

**DAPHNE KALLIOMAKI**  
Sales Representative  
905-985-9777  
www.DaphneKalliomaki.ca

**COLDWELL BANKER** R.M.R. Real Estate Brokerage  
Independently Owned & Operated



Beautiful updated home in the country with Beautiful Downtown Uxbridge just minutes away. Very desirable, sought after executive neighbourhood. Building potential for additional space. See MLS N3513698.

**Contact Daphne Today**  
**1-800-448-1056**

Offered for sale at **\$699,900**

**YOUR NEIGHBOURHOOD LOCAL EXPERTS,  
OVER 20 YEARS EXPERIENCE WITH INNOVATIVE  
MARKETING AND NEGOTIATING SKILLS!  
DON'T UNDERPRICE YOUR HOME, TALK TO US FIRST!**

**Dolores Trentadue & Sonya Torres**

SALES REPRESENTATIVES



Dolores & Sonya

**Your #1 Real Estate Team in Stouffville\***

\*Based on units sold 2016 stats with Remax Hallmark York Group up to June 23/16  
According to RE Stats Inc. Jan 1, 2016 to June 30, 2016. Datum Compiled by the Toronto RE Board.

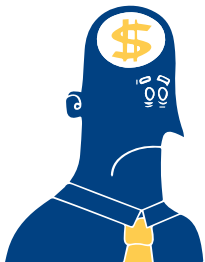
**MORTGAGES FOR ANY SITUATION**

**Let Me Help You Get Approved For:**

- First Mortgages/Secured Lines of Credit
- Purchases
- Refinancing
- Second Mortgages
- Private Mortgages

**Even If You Have:**

- Bad Credit
- Consumer Proposal
- Self Employed
- Overwhelming Debts
- Arrears / Power of Sale
- Property Tax Arrears
- Income Tax Arrears



**If money is tight and you need a break**

**I CAN HELP**

**CALL**  
**Darlene McLeod**  
**(416) 805 6188**

Evenings and weekend appointments available



**DLC The Mortgage Masters Group**  
INDEPENDENTLY OWNED & OPERATED | FSCO #12465



**JASON CLEMENT** Sales Representative  
**Trusted. Experienced. Dedicated.**

Direct Line: 416-888-9509  
jasonbclement@gmail.com



**Spectacular Yard In Pickering - 1409 Major Oaks Rd**



**OPEN HOUSE SUNDAY 2-4PM**

**\$799,000**

\*\*Executive 4+2 Br Home On A Dream Lot\*\* Bordered By Woodlands & Parklands, This Fantastic Open Concept Layout Features A Stunning Sunken Living Room W/Vaulted Ceiling Leading To Spacious Dining Area. Kitchen Opens To Large Family Room W/Gas Fireplace-All With Great Views Of The Premium Lot! \*Huge Income Potential W/2Br Basement Apt W/Separate Entrance. Rents For \$1200/Month\* Visit [Jasonclement.ca](http://Jasonclement.ca) for Virtual Tour and More Details.

**3.99%**  
**FEES OR LESS &**  
**I GUARANTEE I'LL SELL**  
**YOUR HOME IN LESS THAN**  
**30 DAYS**  
**OR ZERO COMMISSION!**

\*some conditions apply

**JasonClement.ca**

**SOLD OVER ASKING!**



**98 Grice Circle.** Highest Price In Wheler's Mill EVER! Contact Us for further details and more Coming Soon Listings! Listed at **\$1,278,000**



**29 Spring St. Stouffville.** Cozy 2 storey home offers 3 + 1 brdm incl. 4 baths! Includes Finished bsmt, w/ separate entrance! This home has had recent renovations and ready to move in! Minutes to Go station and off historical Main St. this home is walking distance to many amenities! This won't last long!

**EXCLUSIVE LISTING**



**219 Robirwin St.** in Stouffville in sought after community of Wheler's Mill! This 4 bedroom boasts 2600 square feet of stunning upgrades and finishing! Extensive landscaping gives this house that extra curb appeal on this quiet street! **\$988,000**

**EXCLUSIVE LISTING**



**669 Sandiford Dr.** 4 bedroom, 3 bath, double car garage, 9 foot ceilings, hardwood on main level, very bright and very clean! Front porch facing pond and forest in spectacular Wheler's Mill! **\$888,000**

**With me, you're not just a number!**

*With the Service you deserve and the results that move you!*

We all know that first impressions sell. I offer a unique real estate experience that includes **creative & quality staging.**

I would like to offer you a **free home evaluation** and a **30-minute paint/colour consultation** to help freshen your home for Summer.

**No pressure. No obligation. Let's just chat.**



Stacey **Kelenjian**  
SALES REPRESENTATIVE

**416-996-9392**  
www.staceykelenjian.com



**CONSECUTIVE TOP PRODUCERS WITH  
RE/MAX ACROSS CANADA!  
WE'RE NOT YOUR AVERAGE AGENTS!**



**www.YourStouffvilleRealEstate.com**  
**Office: 905.727.1941**

