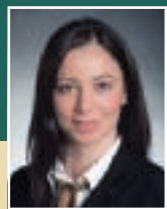
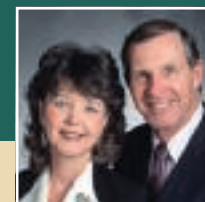


# Beautiful New Facilities

*The Same People You Know & Trust*



**Jessica Competiello**  
 Managing Funeral Director  
 15 - year staff member



Family Owned  
 & Operated by  
**Eric & Susanne Tappenden**



*"It's the people  
 that make  
 the difference."*

### Consider Pre-Arranging

- Lock in the cost at today's prices
- Save 20% by pre-paying
- Peace of mind for your family knowing that everything is taken care of

### NEW RECEPTION FACILITY



**GTA's largest** & most beautiful chapel

**Newly Renovated** in the Summer of 2015

Unparalleled Personal, Professional & Caring Service

**Fair Prices**

**Ample Parking**

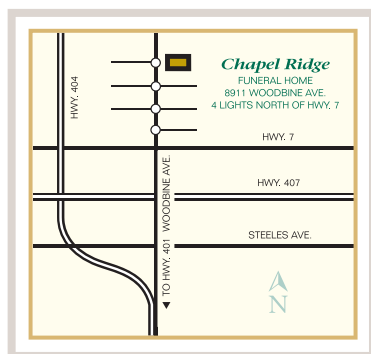
*"A caring part  
 of our  
 community."*



FUNERAL HOME  
 & CREMATION CENTRE

**8911 Woodbine Ave., Markham (4 blocks north of Hwy 7)**

info@chapelridgefh.com • 905-305-8508 • www.chapelridgefh.com



### "Living Well, Leaving Well"

- Learn about the new Estate Administration Act 2012
- How to help your Executor/ Estate Administrator
- How to give your family peace of mind by planning ahead

Complimentary Dinner 6:30 p.m.

**FEBRUARY 24, 2016**

**MARCH 31, 2016**

**APRIL 26, 2016**

Call to register:



**Susan Booth (416) 356-1720**  
 Pre-Arrangement Director  
 info@chapelridgefh.com