

# Stouffville



67 Automall Boulevard (Millard & Hwy. 48) • [stouffvillehyundai.com](http://stouffvillehyundai.com) • 905-888-7777



## VEGAS GIVEAWAY SALE!

WITH EVERY NEW AND USED VEHICLE PURCHASE,  
RECEIVE A VEGAS TRIP FOR 2!!



\*TRIP INCLUDES ROUND TRIP  
AIRFARE, AND 2 NIGHTS HOTEL  
STAY FOR 2 PEOPLE

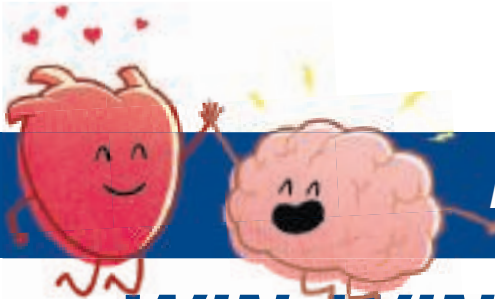
Stouffville Sun-Tribune | Thursday, July 9, 2015 | 20

**FACTORY  
AUTHORIZED  
CLEAROUT EVENT**

GET **0%** FINANCING<sup>†</sup> FOR UP TO **96 MONTHS**  
ON SELECT 2015 MODELS

GET UP TO **12 WEEKLY PAYMENTS<sup>§</sup>** ON US!  
ON SELECT 2015 MODELS

The Hyundai your Heart wants



has a clearout price your Brain will love too.

**WIN-WIN**



HWY: 6.7L/100 KM  
CITY: 9.7L/100 KM\*

2015 **ELANTRA L**

CASH PURCHASE PRICE:  
**\$12,995<sup>‡</sup>**

INCLUDES  
**\$4,032**  
IN PRICE ADJUSTMENTS<sup>§</sup>

Limited model shown\*

HWY: 6.3L/100 KM  
CITY: 8.9L/100 KM\*



GLS model shown\*

2015 **ACCENT 5-DOOR L**

CASH PURCHASE PRICE:  
**\$10,995<sup>‡</sup>** INCLUDES  
**\$4,232**  
IN PRICE ADJUSTMENTS<sup>§</sup>

HWY: 6.6L/100 KM  
CITY: 8.6L/100 KM\*



Tech Auto model shown\*

2015 **VELOSTER MANUAL**

CASH PURCHASE PRICE:  
**\$16,995<sup>‡</sup>** INCLUDES  
**\$2,832**  
IN PRICE ADJUSTMENTS<sup>§</sup>

HWY: 9.8L/100 KM  
CITY: 12.9L/100 KM\*



Limited model shown\*

2015 **SANTA FE SPORT 2.4L FWD**

CASH PURCHASE PRICE:  
**\$24,995<sup>‡</sup>** INCLUDES  
**\$3,832**  
IN PRICE ADJUSTMENTS<sup>§</sup>

ALSO AVAILABLE IN: 7 PASSENGER SEATING

HWY: 7.4L/100 KM  
CITY: 10.4L/100 KM\*



Sport 2.0T model shown\*

THE ALL-NEW  
2015 **SONATA GL**

LEASE FOR ONLY \$118 BIWEEKLY  
THAT'S LIKE PAYING  
**\$59** WEEKLY AT  
**0%** FOR  
**24** MONTHS WITH  
**\$995 DOWN<sup>§</sup>**



Visit [HyundaiCanada.com](http://HyundaiCanada.com) for details on our entire line-up!

**5 YEAR  
WARRANTY**

5-year/100,000 km Comprehensive Limited Warranty<sup>††</sup>  
5-year/100,000 km Powertrain Warranty  
5-year/100,000 km Emission Warranty



SEE YOUR DEALER  
FOR DETAILS

<http://www.hyundaicanada.com/my1st>



**HYUNDAI**  
HyundaiCanada.com

NEW THINKING.  
NEW POSSIBILITIES.<sup>®</sup>

# Stouffville



67 Automall Boulevard (Millard & Hwy. 48) • [stouffvillehyundai.com](http://stouffvillehyundai.com) • 905-888-7777



©/™ The Hyundai names, logos, product names, feature names, images and slogans are trademarks owned by Hyundai Auto Canada Corp. All other trademarks are the property of their respective owners. †Cash price of \$12,995/\$10,995/\$16,995/\$24,995 available on all new 2015 Elantra Sedan L Manual/Accent 5-Door L Manual/Veloster 6-speed Manual/Santa Fe Sport 2.4L FWD models and includes price adjustments of \$4,032/\$4,232/\$2,832/\$3,832. Prices include Delivery and Destination charges of \$1,595/\$1,595/\$1,695/\$1,795, fees, levies and all applicable charges (excluding HST). Prices exclude registration, insurance, PPSA, license fees and dealer admin. fees of up to \$499. Fees may vary by dealer. Delivery and Destination charge includes freight, P.D.E. and a full tank of gas. Price adjustments of up to \$4,032/\$4,232/\$2,832/\$3,832 available on all new 2015 Elantra Sedan L Manual/Accent 5-Door L Manual/Veloster 6-speed Manual/Santa Fe Sport 2.4L FWD models. Price adjustments applied before taxes. Offer cannot be combined or used in conjunction with any other available offers. Offer is non-transferable and cannot be assigned. No vehicle trade-in required. ††Finance offers available O.A.C. from Hyundai Financial Services. Financing example: 2015 Accent 5-Door GL Auto for \$19,136 at 0% per annum equals \$46 weekly for 36 months for a total obligation of \$19,136. \$0 down payment required. Cash price is \$19,136. Cost of Borrowing is \$0. Finance example includes Delivery and Destination of \$1,595, levies and all applicable charges (excluding HST). Finance example excludes registration, insurance, PPSA, license fees and dealer admin. fees of up to \$499. Leasing offers available O.A.C. from Hyundai Financial Services based on a new 2015 Sonata GL Auto with an annual lease rate of 0%. Biweekly lease payment of \$118 for a 24-month walk-away lease. Down Payment of \$995 and first monthly payment required. Total lease obligation is \$7,131. Lease offer includes Delivery and Destination of \$1,695, levies, and all applicable charges (excluding HST). Lease offer excludes registration, insurance, PPSA, license fees and dealer admin. fees of up to \$499. Fees may vary by dealer. \$0 security deposit on all models. 20,000 km allowance per year applies. Additional charge of \$0.12/km. \$0 finance payments for up to 12 weeks offer is available on all new 2015 Hyundai models and the total amount of the 12 weekly payments is converted to an equivalent price adjustment on the price of the vehicle. This offer applies only to purchase finance offers on approved credit. Example: Weekly finance payments on a new 2015 Accent 5-Door GL Auto equal \$52 for 84 months for a total price adjustment amount of \$622. ††Prices of models shown: 2015 Elantra Limited/Accent GLS Auto/Sonata Sport 2.0T/Veloster Tech Auto/ Santa Fe Sport Limited AWD are \$26,927/\$21,277/\$32,827/\$26,727/\$41,777. Prices include Delivery and Destination charges of \$1,595/\$1,595/\$1,695/\$1,795, fees, levies and all applicable charges (excluding HST). Prices exclude registration, insurance, PPSA, license fees and dealer admin. fees of up to \$499. Fees may vary by dealer. ††Fuel consumption for new 2015 Elantra Limited (HWY 6.7L/100KM; City 9.7L/100KM); 2015 Accent GLS (HWY 6.3L/100KM; City 8.9L/100KM); 2015 Sonata Sport 2.0T (HWY 7.4L/100KM; City 10.4L/100KM); 2015 Veloster Tech Auto (HWY 6.6L/100KM; City 8.6L/100KM); 2015 Santa Fe Sport Limited AWD (HWY 9.8L/100KM; City 12.9L/100KM) are based on Manufacturer Testing. Actual fuel efficiency may vary based on driving conditions and the addition of certain vehicle accessories. Fuel economy figures are used for comparison purposes only. †††Offers available for a limited time and subject to change or cancellation without notice. Dealer may sell for less. Inventory is limited. Visit [www.hyundaicanada.com](http://www.hyundaicanada.com) or see dealer for complete details. ††Hyundai's Comprehensive Limited Warranty coverage covers most vehicle components against defects in workmanship under normal use and maintenance conditions.