

Whitchurch-Stouffville's Independent Community Owned Newspaper

Stouffville Free Press

Vol. 5, No. 11

www.stouffville.com

October 2010

**NOT READY
YET ...
Sale Continues**



**Barthau
Jewellers**

**Brilliance
You Deserve**

905-640-4646

6312 Main St.,
Stouffville
"Across from
the Clock Tower"

CHAIN OF COMMAND

Reeves of Whitchurch Township



Joseph Hartman
1850-1859



Seneca Baker
1895/96, 1907/08, 1913/14

Reeves of the Village of Stouffville



J.A. Todd
1902



W.E. Morden
1923, 1931-33

Mayors of Whitchurch-Stouffville:



Ken Laushway 1971-72



Wayne Emmerson
1994-2003 & 2006-2010



Sue Sherban
2003-2006



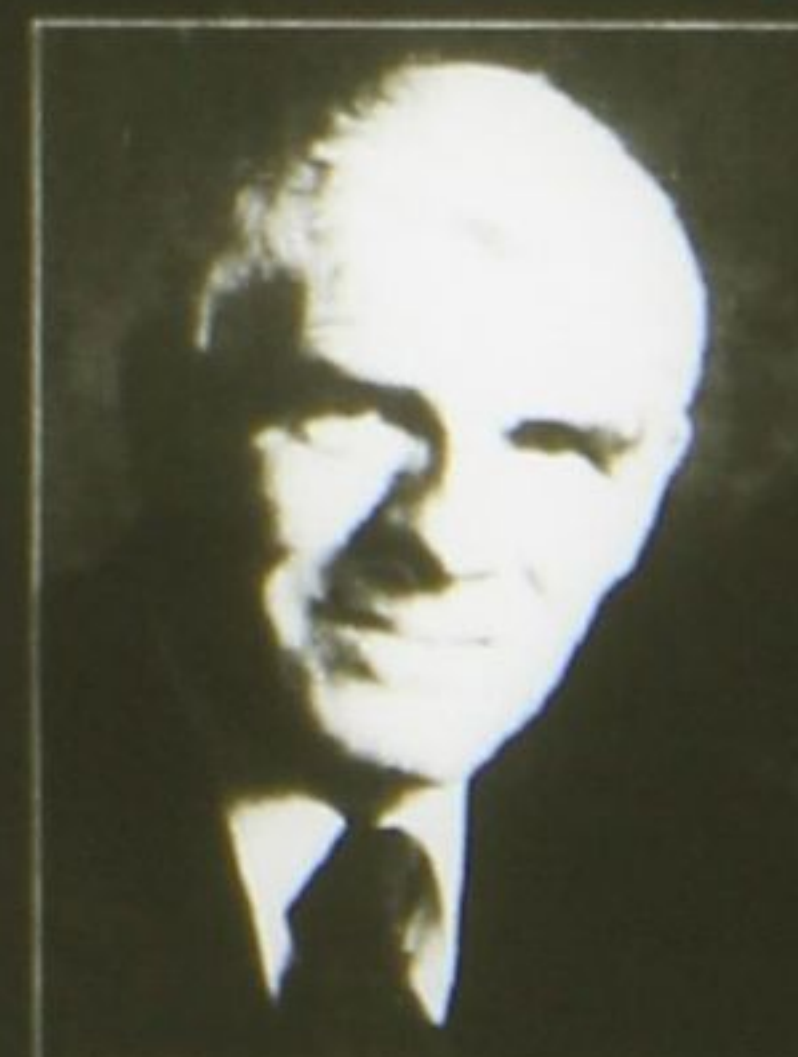
Fran Sainsbury
1985-1994



Tom Wood
1984-85



Gordon Ratcliff 1973-78



Eldred King 1978-84



This retrospective collage of some of our local reeves and all of our mayors since the incorporation of The Town of Whitchurch-Stouffville takes us from 1850 to the present. Check out our election coverage on pages 21-24 and visit election.stouffville.com for in-depth information and continuous updates as we head into the municipal election on Oct. 25.

Tax-Free Savings Account or RRSP?

DundeeWealth

THE BEST CHOICE IS HERE FOR:

Stocks • Corporate & Government Bonds • ETFs • GICs • Mutual Funds

OFFERING FINANCIAL PLANNING & INVESTMENT PROGRAMS FOR:
RRSPs • RRIFs • RESPs • TFSA's

Today's GIC Rates*

- 1 yr - 1.75%
- 2 yr - 2.10%
- 3 yr - 2.40%
- 4 yr - 2.70%
- 5 yr - 3.05%

Effective September 1, 2010. *All rates are annualized and subject to change without notice at any time.



Ken Prentice CFP®
Investment Advisor
Dundee Securities Corporation
18 Ringwood Drive
905-642-9507

DUNDEE WEALTH

