



THE SUMMER MARKET IS HERE!



Call Now For Your FREE Evaluation

Debbie & Len Powell
Sales Representatives

debbieandlen@rogers.com
905-642-6333

Your Community REALTY
ROYAL LEPAGE

Lionel's
Pony Farm • Horse Centre • Petting Zoo

- Pony Rides
- Petting Zoo No Appointment Necessary
- Hay Rides By Appointment Only
- Group & Daycamp Tours

Pre-Book Birthday Parties & Group Tours

PONY RIDE HOURS
July - August, Mon - Fri, 10 am - 1 pm
May - October, Sun, 12 pm - 5 pm

PETTING ZOO HOURS
Mon. - Sat 9 am - Dark, Sun 11am - Dark

11714 McCowan Road, Stouffville
905-640-PONY (7669)
www.lionelsfarm.com

By Chai Duncan

On June 14 The Latcham Gallery hosted an opening reception for *TransFormal*, a group exhibition touching on the idea of transformation, with works by Nobuo Kubota, Louise Noguchi, Naomi Yasui and Akira Yoshikawa.

We saw a riveting performance of "sound singing" by Nobuo Kubota where he used the gallery as a resonator to share his improvised vocalizations. Sculpture and works on paper that relate directly to Kubota's performance are also on display. Towering other-worldly forms that resemble robotic misfits are on offer from

Art As Alchemy

Louise Noguchi's *Shanghai Dragon* series. Walking through, I wondered if these were representations of out-dated visions of the future or romanticized Hollywood versions of the past.

Naomi Yasui uses the gallery walls to create an alchemical apothecary with her *Alchemical Vessel Series*, a collection of 59 porcelain vessels, each representing one of the elements from alchemist Torber Bergman's table of the elements, published in 1775.

We are very happy to welcome back Akira Yoshikawa to present new works at The Latcham Gallery. His poignant and mischievous interventions into the gallery

space focus our attention in the present moment. His investigations into order and chaos invite you to consider the everyday materials he uses, transcend the "obsolete past or the unknown future" and experience the everyday sublime in the here and now.

It has been a privilege to work with such gifted and thoughtful artists. I was touched by their commitment to their process and moved by the magic they weave with the products of their labours. *TransFormal* will be on view until July 28, don't miss it!

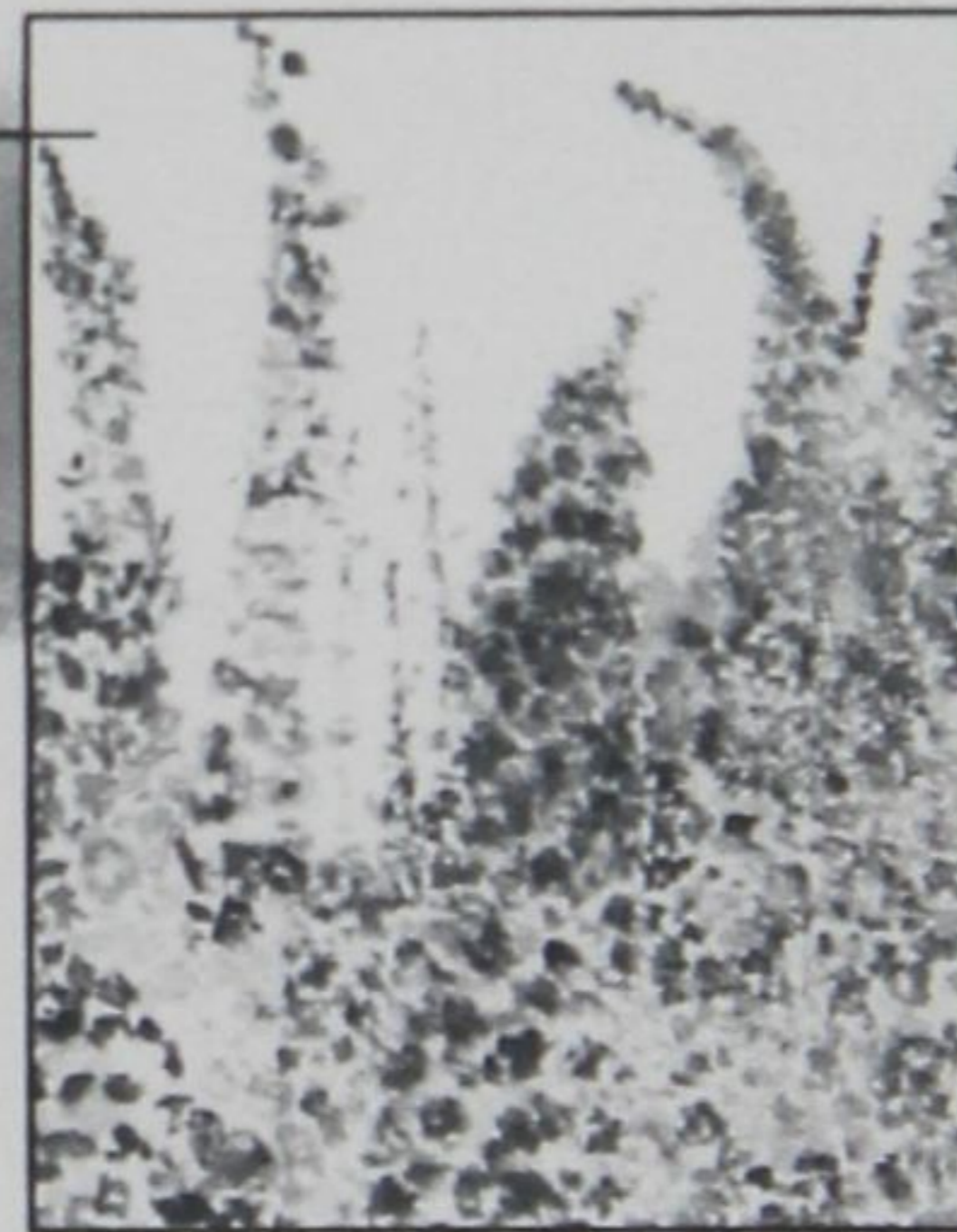
Chai Duncan is curator at The Latcham Gallery



Latcham Gallery's 2011 exhibition - Max Streicher: *Apparitions* (see photo) drew lots of attention among visitors to last year's Strawberry Festival. At this year's festival, everyone is invited to drop into the gallery and check out *TransFormal*, a group exhibition featuring works by four Japanese artists.

Student Artists Put On A Show

Diane Kosanovich created this delightful study of summer flowers, which will be featured at the Silver Jubilee Art Show in July.



We have something a little different at the 55 Plus Club for July: a student art show.

Over the past two years, people who have never held a brush before have been painting up a storm, under the tutelage of Colin Whitebread, Sandra Cole Burke and Josie Schwarzli. These folks didn't know they had it in them. They've done watercolours, acrylics and sketches and we're very proud of what they've accomplished.

On June 29 at 1 p.m., the club will host its annual Strawberry Festival Bridge and Bid Euchre Tournament with delicious strawberry shortcake. Members are invited to come out and enjoy some festival fun.

We're disappointed that council chose

to defer our proposed move. Staff have been directed to look at alternate sites, but nothing has the short time frame of the Sandiford site. The building shell is there: we could be up and running in less than a year.

Retrofitting an alternative site just adds to the cost of the project. Waiting for another three, four or even eight years when some of these people have already waited 30 years is unimaginable.

We're urging people to contact their councillors, asking them to listen to what the seniors are saying. We don't need a pool: we're not asking for another fitness centre. We're just asking for a place where we can pursue our interests with friends old and new.

A 55-plus centre would offer social, intellectual, vocational and recreational opportunities, as well as fitness. A healthy, balanced lifestyle includes all of these things.



This beautiful landscape by Judy Ahamad will be on display in the July Art Show at the Silver Jubilee 55 Plus Club.



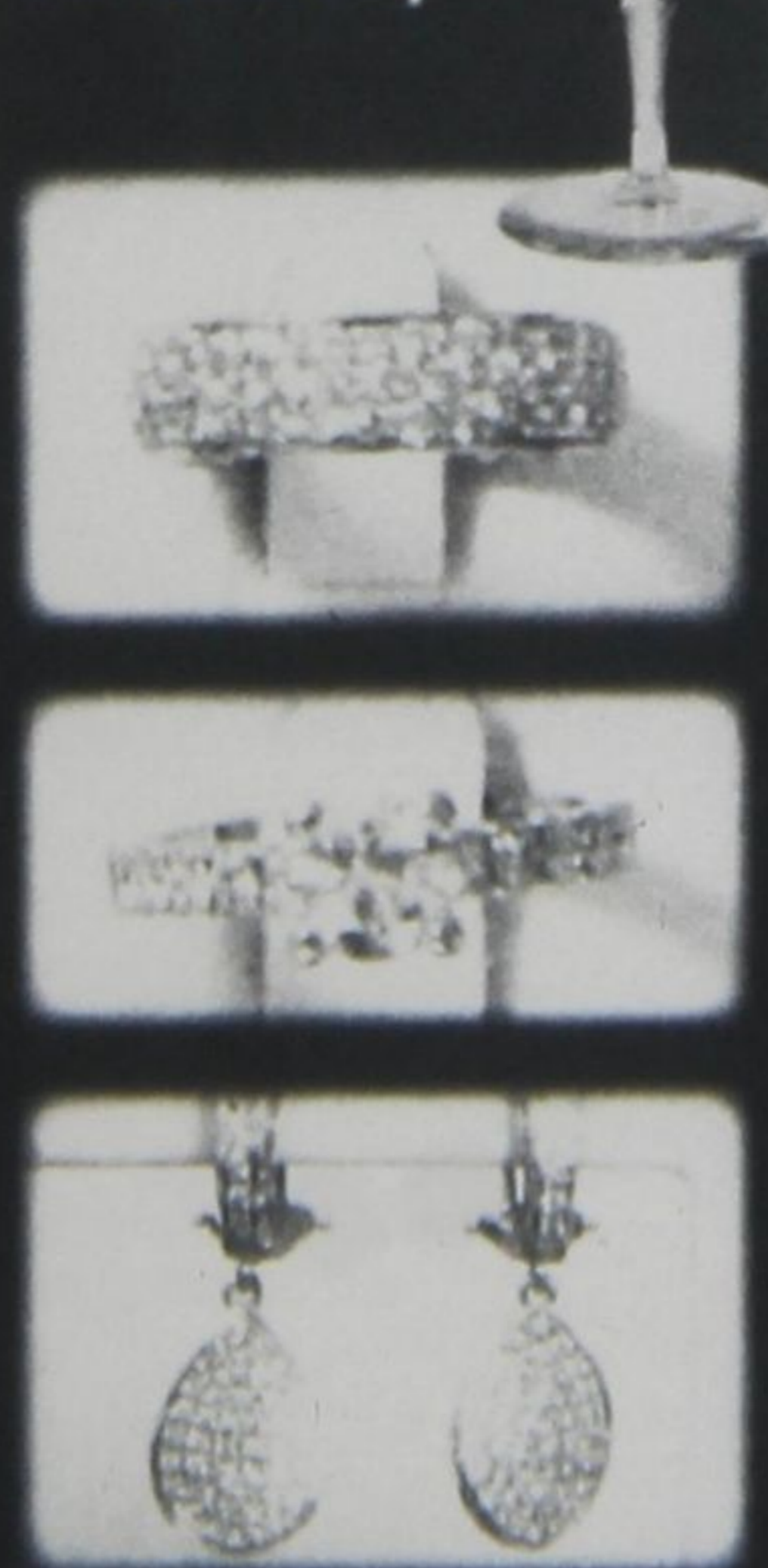
DIAMONDS 'N MORE

Design & Manufacturers of Fine Jewellery for 20 Years

Now Taking Orders for Wedding Rings for Summer Weddings

86 Ringwood Dr., Ste. 34 • 905-591-5917
(South of Boyd's Sports • Just West of Reesor Farm Kitchen)
diamondsnmore@rogers.com

Wishing you a Fun-Filled Strawberry Festival & a Happy Canada Day



Protecting the Community for Over 100 Years



Auto • Home • Farm • Business



BIRKETT-HASSARD

Insurance Brokers Limited

www.bhinsure.ca

Shop Locally for a Competitive Quote
6262 Main Street, Stouffville

905-640-2000
1-800-851-3829

