

Join us at the
STRAWBERRY FESTIVAL July 3rd

F Watermelon
R Balloons
E Dog Food Samples
E Doggie Pool
E Draws & Raffles



**PROUD HOST OF THE
"PET CONTEST"**
FRANKLIN PARK ~ JULY 1 AT NOON

AGILITY FOR FUN! demonstrations
at 1:30 & 2:30 p.m. Try out the agility
equipment with your dog
during the break.



**CELEBRATING
STRAWBERRIES**

How sweet it is

Strawberry Fields
Forever: shoppers
take advantage of the
opportunity to stock
up on succulent local
strawberries during
last year's Festival.



A huge crowd of residents
and visitors came to
town to enjoy the 2009
Whitchurch-Stouffville
Strawberry Festival.

The Stouffville
Steppers proved
to be a big hit with
Festival-goers.



On July 3, the Whitchurch-Stouffville
Strawberry Festival theme is all about – you've
guessed it – strawberries!

Day three begins at 7 a.m. with the Ballantrae
Lions pancake breakfast in the Memorial Park
pavilion. Main Street will be closed to cars
between 9 a.m. and 5 p.m. for the market,
which will feature a huge selection of one of
a kind arts and crafts, jewellery, clothing and
much more, including a mountain of succulent
local strawberries. Guitars will serenade you
from the Lions gazebo on Main St. by Duffin's
Creek and York Durham Heritage trains will
take you on a nostalgic trip from the Stouffville
Go Station, beginning at 1 p.m.

No Strawberry Festival would be complete
without a Pie and Jam contest and a Freckles
contest. Judging and prize-giving will take
place at the Red Berry Café in Latham Hall
between 10:30 a.m. and 12:30 p.m. The Kids
Zone will be a hive of activity and Saturday's
events will include bird house building for
budding birders.

Sangster's Grove will host free pony rides,
the Bouncing Balls Corral and a petting
zoo, while the marquee will feature a baby
contest, bubblegum blowing contest,
taekwondo demonstration, magic show and a
performance by York Dance Academy. Evening
entertainment in the marquee will feature
long-time local favourite Grant Fullerton and
Jamnation. Tickets for the concert are \$5 at
the door.

STRAWBERRY DEALS!
cdccomputerliquidators.com

We Have XP Operating Systems

Quality Off – Lease Business Computers
With Savings Up To 75% Off Retail
Why Buy New!

Enjoy The Freedom Of Multiple Computers At Home
Or Work For A Fraction Of The Cost Of New!

LAPTOPS – FROM \$195.00

IBM P3/C750/184Ram/20Gig/DVD/Wireless	\$195.00
Dell Latitude P3/866Mhz/384Ram/20Gig/Wireless	\$295.00
IBM P4/1.6Ghz/1024/60/CDRW+DVD/Wireless	\$425.00
Toshiba P4/3.0Ghz/512/60Gig/DVD-Burner/Wireless	\$395.00
Mac G4/1.2Ghz/512Ram/60Gig/CDRW+DVD/Wireless	\$495.00
Acer 1.5Ghz/1.5GigRam/40Gig/DVD-Burner/Wireless	\$395.00
HP 2.16Ghz/1GigRam/80Gig/DVD-Burner/Wireless	\$595.00
New Open Box Toshiba's List Price -	\$849.00
Toshiba 2.0Ghz/2GigRam/200Gig/Wireless/Webcam	\$595.00

DESKTOP & TOWERS – FROM \$95.00
We Have LCD Monitors, Wireless And
Most Parts In Stock

Complete In House Service Laptops, PC's & Mac
Whatever The Problem - Bring It To Us!

**CLEARANCE LAPTOPS & DESKTOPS
FROM \$50.00**

Hours:

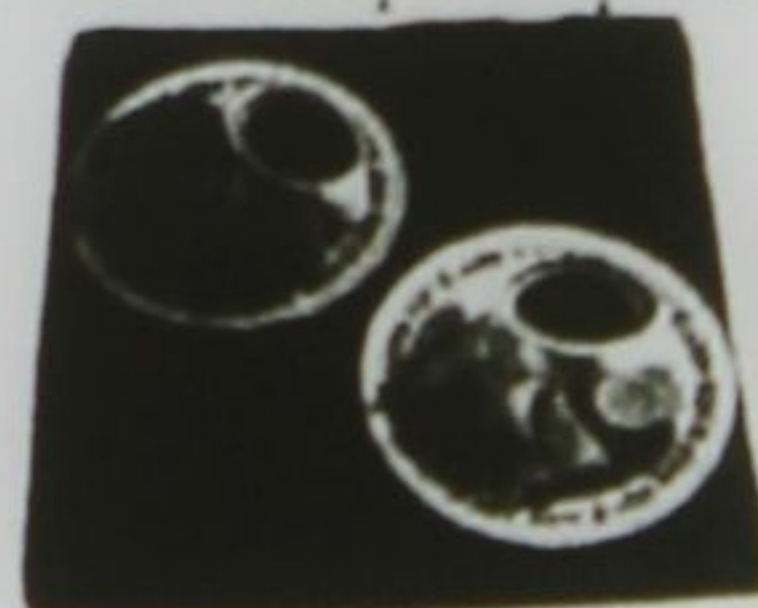
Tues. 10am - 6pm • Thursday 10am - 6pm
Sat. 10am - 3pm

Phone: (647) 977-1592 or E-Mail: cdcis@3web.net
6246 Main St. Unit 2, Downtown Stouffville
(1 Block West Of CIBC Bank North Side)

MAIN COURSE
Bar & Grill

*Stop By Our Side Walk Grill
on Strawberry Festival
Saturday July 3th*

Spring Rolls,
Samosas,
Hot Dogs &
More!



"The BEST Breakfast in Town"

6298 Main St. 905-642-2122
in Downtown Stouffville

London Life Insurance Company



Representative

TIM ROCHACEWICH

B. COMM, CLU, CH. F.C., CFP

Serving Stouffville Area Residents Since 1975
FOR SALES & SERVICE INFORMATION CALL

905-640-4588