

EVA

Granite & Marble Products Countertop Specialist



Let Eva Granite and Marble Transform Your Kitchen Countertop

Classic granite and marble, highest quality craftsmanship, and special prices for May. That's what you'll get, along with a dramatic kitchen transformation, when you purchase a stunning new countertop from Eva Granite and Marble Products. Located at 3472 Stouffville Rd. just west of Kennedy Rd., these stone product specialists offer hundreds of colours, shapes and sizes of custom countertops.

May specials include Blue Sparkle, Golden Palm, Manchester Green, Boltic Brown and Almond Mauve slab selection, regularly priced at \$48 a square foot, for only \$38.99! Or high end favourites such as Antique Brown, Millennium Gold, Tuscan Sand, Pajura Bronze, Crema Bauda, Mauro Caster, Golden Jupara or Delicatus, regular priced at \$70 a square foot, marked down to \$54.99! These special prices include installation and standard edges.

Eva Granite and Marble also carries a stunning collection of stone ornaments in all sizes. Come on by and see their religious statues, columns, water features, ornamental animals and other beautifully designed works of marble and granite art to complete your garden or home. You might even see Eva's artist working on a unique hand carved ornament or countertop!

Eva Granite and Marble provides creations for homeowners, builders and contractors, with customers coming from hundreds of miles away to experience the difference that quality and craftsmanship in stone creation makes. Take the short drive to Kennedy and Stouffville Rd. to see for yourself.

Eva Granite and Marble Products is located at 3472 Stouffville Rd. west of Kennedy Rd. Open 7 days a week. Phone 905-887-3200.



Veronika's Music Studio

HALF DAY DISNEY SUMMER CAMP

- Singing • Dancing • Acting
 - Keyboard / Guitar Playing
- AGES 6 - 12

Price for 1 week - \$195

CALL FOR REGISTRATION
905-642-6776

Who says Stouffville doesn't have enough parking spots? Bruce Stapley, our roving reporter and ad man supreme, came up with the perfect solution to Main St. gridlock when he snapped this neatly parked Smart Car with his trusty camera. Now he's hoping our venerable council will deliver Smart Cars to every household, along with blue boxes and green bins. It's the environmentally responsible thing to do.



FARQUHARSON REALTY LIMITED BROKERAGE

SELLING PROPERTIES IN STOUFFVILLE, UXBRIDGE AND SURROUNDING AREAS SINCE 1956.

Dan Farquharson
Broker of Record



Mona Farquharson
Broker/Manager



NEW 6500 SQ.FT. FRENCH CHATEAU on Private Wooded 3.7 Acres. Highest Quality Design and Finishings, Spacious Bright Principal Rooms with Soaring Ceilings, Elaborate Mouldings, Extensive Limestone. State of the Art Finishings and Mechanicals. Most Prestigious Neighbourhood in Whitchurch/Stouffville. \$3,600,000



ELEGANT HIGHLY CUSTOMIZED and Meticulously Maintained Luxurious Home on 2 Acres Overlooking Fountain in Pond. Custom Award Winning Gunite Betz Pool with Waterfall. Recently Replaced Kitchen, Professional Landscaping. Very Private with Only One Neighbour and Backing to Large Greenbelt. Whitchurch/Stouffville \$1,280,000



PRESTIGIOUS CAMELOT ESTATES Custom 3700 Sq.Ft. Luxurious Bungalow on 2 Wooded Acres Backing onto Greenspace. 4 Bedrooms. Cherry Floors, Crown Mouldings, Vaulted Ceilings, Stone Fireplaces & 4 Car Garage. Aurora Rd. & Hwy 48. Great Value at \$1,199,000



ELEGANT STONE BUNGALOW on 1.63 Acres Built by Peter Schneider with South View of Forest. 10 Ft Ceilings, Dream Kitchen & Master Bedroom Suite. Walk Out Finished Lower Level. Luxurious Baths. Whitchurch/Stouffville \$1,850,000



UPPER CANADA POST & BEAM in Prestigious Trail of The Woods. Fabulous Conservatory with Heated Limestone Floors. 4 Bedrooms, Recent Downsview Kitchen & Baths, Cozy Fireplaces. Professionally Landscaped 1.6 Acre Lot with Mature Forest. \$1,280,000



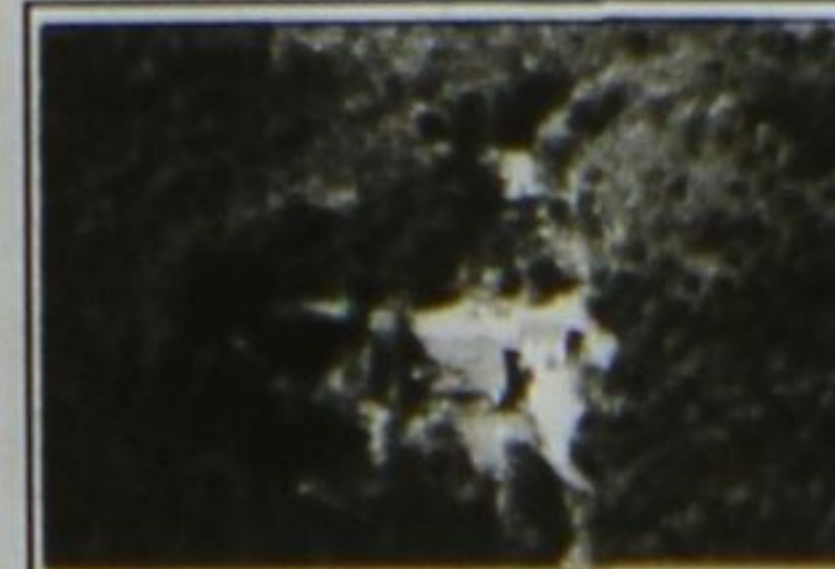
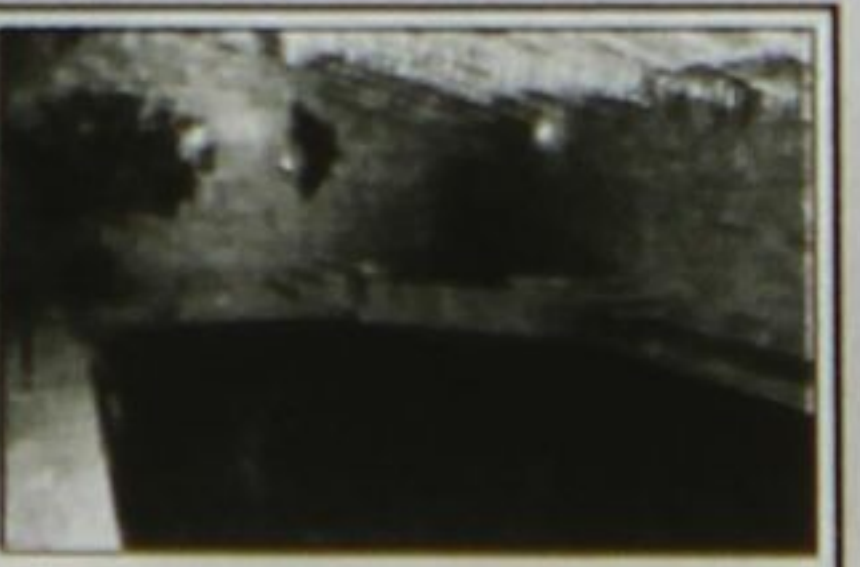
CUSTOM EXECUTIVE on 2 Acres Backing on York Regional Forest. Entertainment Deck with Pool and Hot Tub. Professionally Finished Lower Level with 9' Ceilings, Rec Room with Oak Bar, Gym, 5th Bedroom and Bath. Superb Location. Whitchurch/Stouffville \$1,225,000



"VALLEYVIEW" Stephen McCassey Designed Spacious Stone Classic on 10 Acres with Large Trout Pond. Incredible Landscaping including Perennial Gardens, Ornamental Ponds and Waterfalls, Outdoor Pool and Spa, Gazebo and Studio. Indoor Spa Pool and Exercise Room. Main Floor Master, 5+1 Bedrooms. Kennedy & Vandorf Rd. Great Value at \$1,795,000



"SKYTOP" One of the Finest Country Estates in the GTA, 25 Rolling Acres with Privacy, Mature Hardwood, Pond and Views of Rich Landscaping and Enchanting Manicured Trails. Award Winning Architecture Featuring 7 Bedrooms, 8 Baths, Marble Indoor Pool, Hot Tubs, Roof-Top Terrace and Screened-In Gazebo. Restored Log Gatehouse by Shakespeare. An Exclusive Country Estate of the Highest Standards. By Personal Appointment Only. \$2,600,000



Private West Uxbridge 15 Acre Estate Features a Luxurious and Spacious Open Concept Home with Beamed Ceilings, a 2 Storey Atrium/Foyer, a Large Bright Kitchen and Walk Outs from Both Levels. 40' Gunite Pool, Hot Tub, Picturesue Spring Fed Pond, Forest and Meadow. Large Principal Rooms, 4 Bedrooms, Multiple Fireplaces and a Finished Walk-out Entertainment Area. \$729,000



★ ★ ★ DAN & MONA'S SALES RESULTS FOR 2007 ★ ★ ★

GTA One of Top 1% of all 21,000 Realtors in the GTA 2007, 2006, 2005, 2004, 2003, 2002
N13 (Whitchurch/Souffville) #1 Agent in Value 2007, 2006, 2005, 2004, 2003, 2002
N16 (Uxbridge) #1 Agent in Value 2007, 2006, 2005, 2004

*** These statistics are compiled by IMS, an Independent Research Company using Toronto Real Estate Board Data ***

Let Us Help You Add Value to Your Property For a Confidential Consultation
Call Dan & Mona Farquharson 905-640-4151



905-640-4151

farquharson-realty.com
honesty, integrity
& service since 1956