



"A better choice for all your insurance needs."

Compass' strengths become your insurance advantage:

- Superior Service from friendly, experienced brokers
- 24 hour live claims service from a senior broker
- Over 10 of Canada's leading insurers
- Competitive pricing for coverage that fits your needs

Call us or drop in for a no obligation, competitive quote.

Home • Auto • Life • Health • Business

A member of the Flewelling Insurance Group

Downtown Stouffville • Behind Candlelight & Memories

20 Freel Lane, Unit 4 & 5

(905) 642-6463

1-866-203-6365

www.compassinsurance.ca

## LEMONVILLE ARTISTS TO HOST ANNUAL SHOW

By Kate Gilderdale  
Stouffville Free Press

Everyone is invited to attend The Lemonville Group of Artists' 14th annual Show and Sale, which takes place May 5 and 6 from 10 a.m. to 5 p.m.

The show will be held at the beautifully renovated Lemonville Community Centre, 13453 McCowan Rd., and will incorporate a wide variety of artwork from members of this talented group. Admission is free and the centre is wheelchair accessible. Browsers are welcome.

To see samples of the artists' work, visit [LemonvilleGroupofArtists.googlepages.com](http://LemonvilleGroupofArtists.googlepages.com). For more information on the event, call 905-640-3965.



Diane Passafiume, a member of the Lemonville Group of Artists, prepares for the group's annual Show and Sale on May 5 and 6 at Lemonville Community Centre.



Canadian journalist Kathleen Kenna (3rd from right) accepts a Maple Leaf pin from Stouffville Rotary Club past president Hilary Richards at the club's *Night of a Thousand Dinners* April 12 at Sleepy Hollow Country Club. Rotary's John Pollard hands cheques totalling \$1,000 from Ms. Richards and the club's Ken Prentice (2nd from right) to Paul Faucette of the Canadian Landmine Foundation. Ms. Kenna, who was seriously injured by a grenade while on assignment in Afghanistan in 2002, was the guest speaker.

### FARQUHARSON REALTY LIMITED BROKERAGE



Dan Farquharson  
Broker of Record



Mona Farquharson  
Broker/Manager

SELLING PROPERTIES IN STOUFFVILLE, UXBRIDGE  
AND SURROUNDING AREAS SINCE 1956.



**PRESTIGIOUS CAMELOT ESTATES** Custom 6 Month Old 3700 Sq. Ft. Luxurious Bungalow on 2 Wooded Acres Backing to Greenspace. Beautifully Designed & Crafted with Quality. 4 Bedrooms, Cherry Floors, Crown Mouldings, Vaulted Ceilings, Fireplaces & Oversized 4 Car Garage. Aurora Rd. & Hwy 48. \$1,269,000.



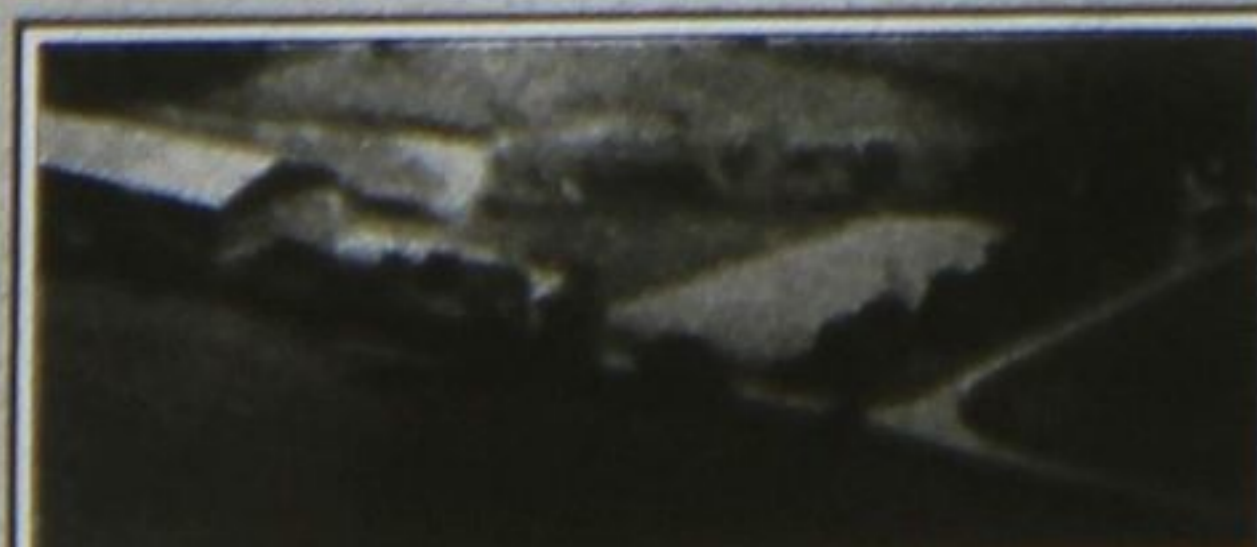
**CONTEMPORARY MASTERPIECE** by Ugo Fisico, Architect. Nestled on 9 Idyllic Acres Featuring a Mesmerizing Pond Sheltered by Woods. Approximately 10,000 Sq. Ft. of Quality Features, 40" High Fireplace, an Abundance of Natural Light. Near Aurora Rd. & Hwy. 404. \$1,995,000



**BRISTOL POND ESTATES** Scenic 2.8 Acres. Part Ownership in Private Lake and Beach. Luxurious 4200 Sq. Ft., 5 Bedrooms, Stone Exterior, Theatre Room. Open Concept Kitchen/Family Room. Inground Pool and Spa. \$795,000



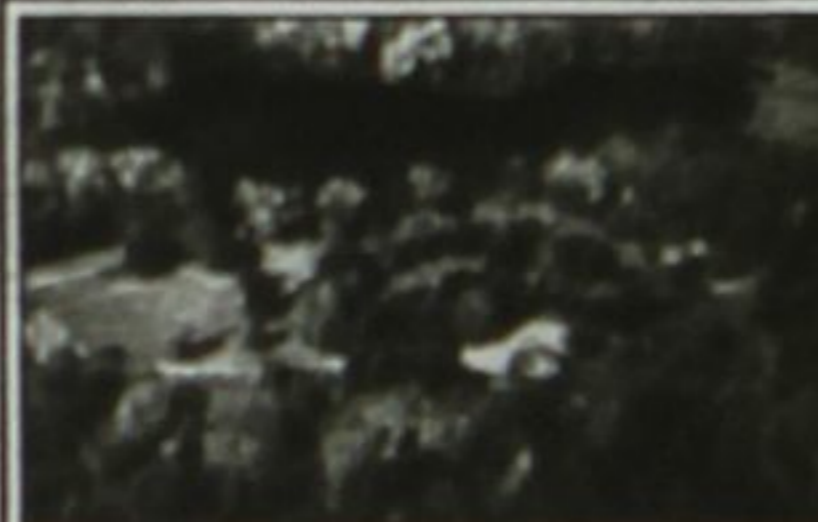
**FABULOUS UP COUNTRY** Virtually New 3400 Sq. Ft. Bungalow with 10 Ft Ceilings on 1 Ac Lot. Private Cul de Sac in Prestigious Trail of The Woods. Designers Own Home. Magazine Quality with No Detailed Overlooked. Contemporary Design with Traditional Feel. Great Value at \$1,200,000. \$200,000 under cost.



**HORSE FARM 50 ACRES** Highway 48 near Baldwin. Spacious 2700 Sq. Ft. Brick Bungalow. Indoor Arena 68' x 138', 9 Box Stalls, 5 Paddocks, Dog Kennels. Excellent Value. \$673,000



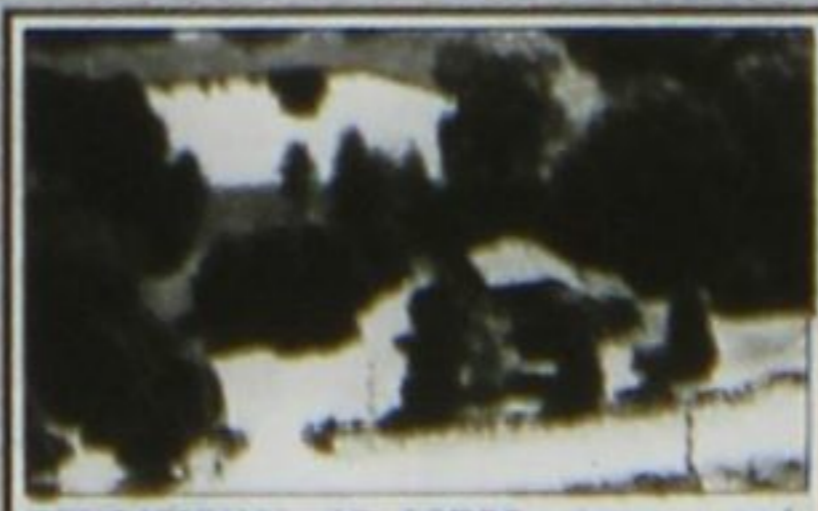
**CHALET STYLE HOME** on 37 Acres. Most Sought After Road in Uxbridge. Complete Privacy. Hilltop Sunset Views. Walk to Town on Trails or Ride through Regional Forest. 3 Bedroom, Open Concept. Finished Walk Out Basement. Asking \$625,000



**"CORRAG MHEAN"** Rare Opportunity to Own a Spectacularly Beautiful 167 Acre Private Estate with an Approximate 10 Acre Private Lake. 3 Houses Including a Large Stone Bungalow Main House, Guest House, Gate House and Barn. 55 Minutes to Downtown Toronto. 5 Minutes to 407. An Uncompromising Estate. \$2,500,000



**LARGE POND, TROUT STREAM, WOODS & MEADOW** on 11 Private Acres. Sensational Approximate 4300 Sq. Ft. Custom Open Concept Design with Large Principal Rooms. Fabulous New Large Cherry Kitchen with Granite Counters and Large Eating Area Overlooking the Pond. 4 Bedrooms. Sensational Solarium Overlooking Pond and Gardens. River and Meadow. A Wonderful Property for Entertaining Family and Friends. Own Your Own Private Park. Uxbridge \$759,000



**SENSATIONAL 10 ACRES** Large pond, Perennial Gardens, Forest & River. Well Maintained 2 Bedroom Home Featuring Newly Renovated Kitchen, Baths etc. Stone Fireplace. Extended Cedar Decking. Garage/Workshop. North of Uxbridge \$498,000



**TWO HOUSES** on Private 4 Ac Wooded Property Overlooking Large Pond & Park. Main House is Open Concept 3 + 3 Bedroom Bungalow with Amazing New Kitchen & New Inground Pool. 2nd Guest House. 4 Car Garage. Uxbridge \$799,000



**PRIVATE LAKEFRONT** Dock & Sunset Views on Musselmans Lake. Custom Home, Immaculate & Beautifully Decorated. Contemporary Architecture. Cottage & Home in One Commutable Location. Stouffville \$475,000

#### \*\*\* DAN & MONA'S SALES RESULTS FOR 2006 \*\*\*

GTA One of Top 1% of all 21,000 Realtors in GTA 2006, 2005, 2004, 2003, 2002

N13	(Whitchurch-Stouffville)	#1 Agent in Value & Units in 2006, 2005
N16	(Uxbridge)	#1 Agent in Value 2006, 2005, 2004
N13	(Whitchurch-Stouffville)	#1 Agent in Value 2004, 2003, 2002

Overall #1 Agent in N12, N13 and N16 in 2005

\*\*\* These statistics are compiled by IMS, an Independent Research Company using Toronto Real Estate Board Data \*\*\*

Let Us Help You Add Value to Your Property For a Confidential Consultation  
Call Dan & Mona Farquharson 905-640-4151



905-640-4151

farquharsonrealty.com  
honesty, integrity  
& service since 1956