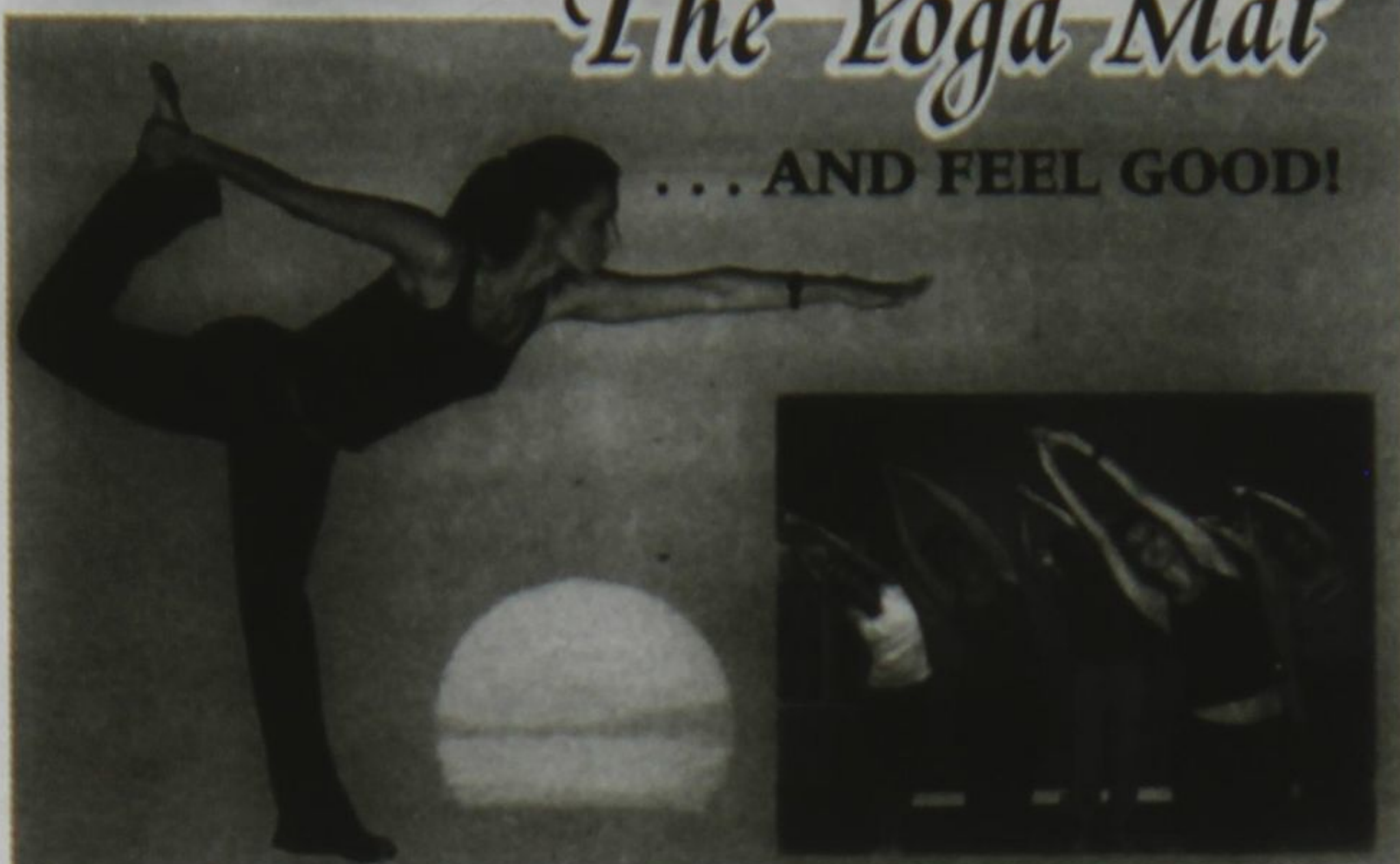


STEP OFF LIFE'S TREADMILL AND ONTO

The Yoga Mat

... AND FEEL GOOD!



WE HAVE THE YOGA CLASS THAT'S JUST RIGHT FOR YOU

- Hot Yoga
- Advanced
- Restorative
- Beginner
- Yoga For Kids
- Pre-natal Yoga

WE OFFER AFFORDABLE RATES AND FLEXIBLE PACKAGES

Call For Your Free Trial Class



#86 Ringwood Drive,
Suite 203, Stouffville, ON
yogamatstudio@sympatico.ca
www.feelgoodyoga.ca
905-642-YOGA (9642)

Gift Certificates Available For Mother's Day

What a difference a day makes...

By Kate Gilderdale
Stouffville Free Press

As always, they're not giving too much away, but the stalwarts and newcomers involved in this year's Music Mania have revealed their theme for the 2007 show: 24 and So Much More.

"It isn't going to follow a day's sequence," said director Dave Baxter enigmatically, "but it is about the events of a day; morning, afternoon, the day in general." This year's extravaganza will offer the traditional mix of skits, dance and chorus numbers, and a peak preview at a recent rehearsal promised energy, wit and some marvellous melodies.

"A lot of the songs are very familiar, 70s-type stuff, folk music, that sort of thing." Buddy Holly's That'll Be The Day will also be featured as will Gordon Lightfoot's haunting Early Morning Rain. Other songs include Pete Seeger's Turn! Turn! Turn!, with text taken from the Book of Ecclesiastes, which was a massive hit for The Byrds in 1965, and Taking Care of Business, a nod to the everyday world of work. "Our blacklight number, which opens the second half, will be a little different and more lively this year," said Dave.

Music Mania, which began in 1960, will feature both long-time performers and young up and comers, some of whom are following in their parents' footsteps. The 2007 team includes assistant director

Sharon Baxter, co-producers Gayle Dunn and Jean Buchan, music director Marg Cunningham, assistant music director Vince Parry, skit director Rick Lightfoot, assistant skit director Steve Fronske and dance director Natalie Wood.

The show will take place at Stouffville District Secondary School April 26, 27 and 28 at 7:30 p.m., half an hour earlier than in previous years. "This will be our last show at the old SDSS and we want to make it really special," said publicity co-ordinator Heather Andrews.

"Proceeds from this year's show will be going to the York Durham Academy of Performing Arts. Over the past 46 years Music Mania's charitable donations have totalled almost \$80,000. We are pleased each year to be able to have a scholarship at SDSS for a student pursuing a pathway in the arts."



Lorraine French, Karin Bacher and Rob Reid polish up one of their skits for the 2007 Music Mania which is entitled 24 and So Much More.



Dan Farquharson
Broker of Record

FARQUHARSON REALTY LIMITED BROKERAGE

SELLING PROPERTIES IN STOUFFVILLE, UXBRIDGE
AND SURROUNDING AREAS SINCE 1956.



Mona Farquharson
Broker/Manager



LARGE POND, TROUT STREAM, WOODS & MEADOW on 11 Private Acres. Sensational Approx 4300 Sq.Ft. Custom Open Concept Design with Large Principal Rooms. Fabulous New Large Cherry Kitchen with Granite Counters and Large Eating Area Overlooking the Pond. 4 Bedrooms. Sensational Solarium Overlooking Pond & Gardens, River & Meadow. A Wonderful Property for Entertaining Family & Friends. Own Your Own Private Park. Uxbridge \$759,000



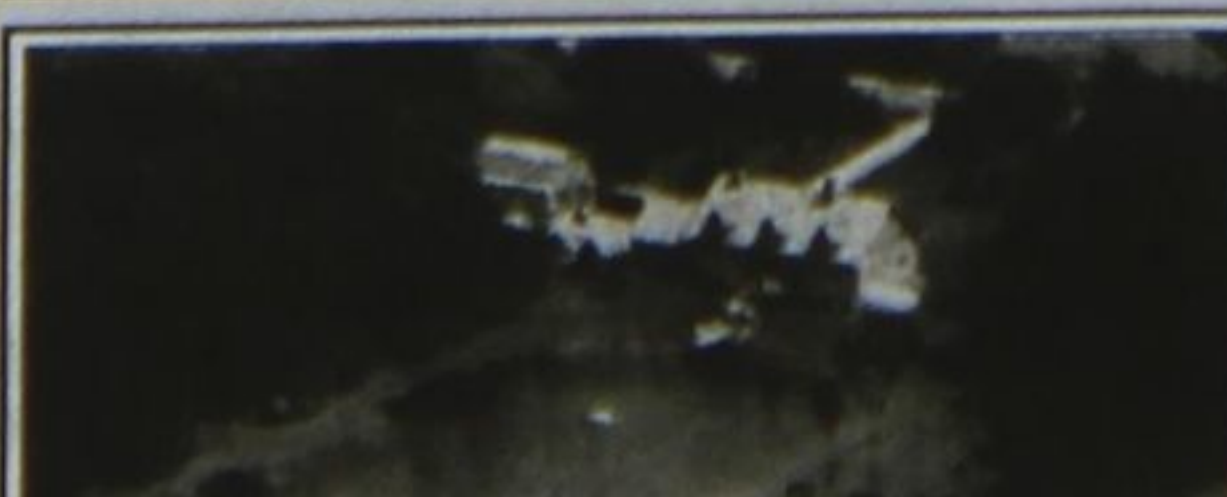
CHARMING CENTURY STONE ESTATE Faithfully Restored Under the Supervision of David Stark, Associate of Napier B. Simpson on 50 Spectacular Acres with Magnificent Long Views. Original Trim, Flooring, Stained Glass, etc. North Uxbridge \$850,000



PRESTIGIOUS CAMELOT ESTATES Custom 6 Month Old 3700 Sq.Ft. Luxurious Stone Bungalow on 2 Wooded Acres Backing onto Park. Beautifully Designed & Crafted with Quality. 4 Bedrooms. Cherry Flooring, Crown Mouldings, Vaulted Ceilings, Fireplaces & Oversized 4 Car Garage. Aurora Rd. & 48 \$1,269,000



FABULOUS UP COUNTRY Virtually New 3400 Sq.Ft. Bungalow with 10 Ft Ceilings on 1 Ac Lot. Private Cul de Sac in Prestigious Trail of The Woods. Designers Own Home. Magazine Quality with No Detailed Overlooked. Contemporary Design with Traditional Feel. Great Value at \$1,200,000



"STILL WATERS" CUSTOM LOG HOME Nestled on 10 Acres with Tranquil Trails Through 6 Acres of Forest, Very Large Pristine Stocked Pond. Exposed Beams, Fieldstone Fireplace with Antique Pine Beam Mantel. Separate Log Craft Studio or Workshop. Minutes to 404 & 407. Uxbridge \$1,100,000



BRISTOL POND ESTATES Scenic 2.8 Acres. Part Ownership in Private Lake with Beach. Luxurious 4200 Sq.Ft., 5 Bedrooms, Stone Exterior, Theatre Room, Open Concept Kitchen/Family Room. Inground Pool & Spa. \$795,000



"CORRAG MHEAN" Rare Opportunity to Own a Spectacularly Beautiful 167 Acre Private Estate with an Approximate 10 Acre Private Lake. 3 Houses Including a Large Stone Bungalow Main House, Guest House, Gate House and Barn. 55 Minutes to Downtown Toronto. 5 Minutes to 407. An Uncompromising Estate. \$2,500,000



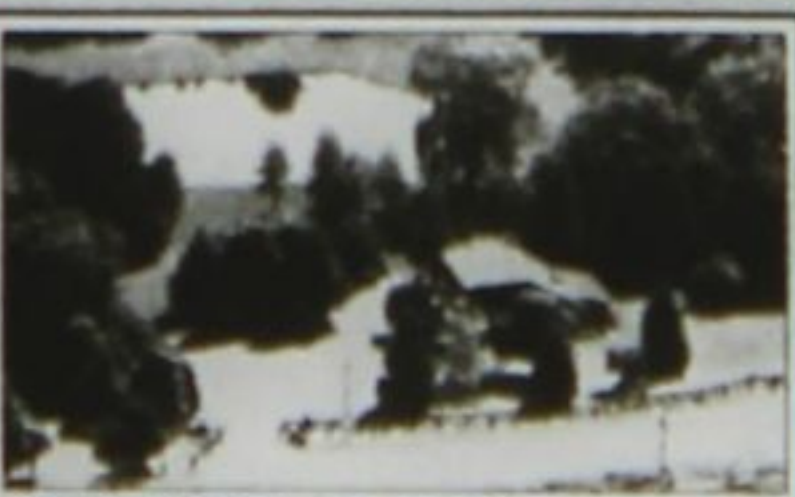
SENSATIONAL 10 ACRE Property w/ Large Pond, Perennial Gardens, Forest & River. Well Maintained 2 Bdrm Home Newly Renovated Kitchen, Baths, Stone Fireplace. Extensive Cedar Decking. Garage/Workshop. Uxbridge \$498,000



TWO HOUSES on Private 4 Ac Wooded Property Overlooking Large Pond & Park. Main House is Open Concept 3 + 3 Bedroom Bungalow with Amazing New Kitchen & New Inground Pool. 2nd Guest House. 4 Car Garage. Uxbridge \$799,000



PRIVATE LAKEFRONT Lot with Dock and Sunset Views on Musselman's Lake. Gorgeous Custom 3 Storey Home with Spectacular Lake Views. Immaculate and Beautifully Decorated. Contemporary Architecture. Combined Cottage and Home in One. Commutable Location. Stouffville \$475,000



HORSE FARM 50 ACRES Highway 48 near Baldwin. Spacious 2700 Sq.Ft. Brick Bungalow. Indoor Arena 68 Ft x 136 Ft, 9 Box Stalls, 5 Paddocks, Dog Kennels \$673,000



OUTSTANDING WELL LOCATED EQUESTRIAN CENTER on 33 Acres. 21 Box Stalls, Barn & Indoor Riding Arena, 7 Paddocks. Great Investment Property with Income. Stouffville \$1,250,000



CHALET STYLE HOME on 37 Acres. Most Sought After Road in Uxbridge. Forest & Meadow Provides Complete Privacy. Spectacular Hilltop Sunset Views. Walk to Town on Trail Network & Ride Through Regional Forest. 3 Bdrm Open Concept. Finished Walk Out Basement. \$625,000



HORSE FARM 50 ACRES Highway 48 near Baldwin. Spacious 2700 Sq.Ft. Brick Bungalow. Indoor Arena 68 Ft x 136 Ft, 9 Box Stalls, 5 Paddocks, Dog Kennels \$673,000



OUTSTANDING WELL LOCATED EQUESTRIAN CENTER on 33 Acres. 21 Box Stalls, Barn & Indoor Riding Arena, 7 Paddocks. Great Investment Property with Income. Stouffville \$1,250,000

*** DAN & MONA'S SALES RESULTS FOR 2006 ***

GTA One of Top 1% of all 21,000 Realtors in GTA 2006, 2005, 2004, 2003, 2002

- N13 (Whitchurch-Stouffville) #1 Agent in Value & Units in 2006, 2005
- N16 (Uxbridge) #1 Agent in Value 2006, 2005, 2004
- N13 (Whitchurch-Stouffville) #1 Agent in Value 2004, 2003, 2002

Overall #1 Agent in N12, N13 and N16 in 2005

** These statistics are compiled by IMS, an Independent Research Company using Toronto Real Estate Board Data **

Let Us Help You Add Value to Your Property For a Confidential Consultation

Call Dan & Mona Farquharson 905-640-4151



905-640-4151

farquharsonrealty.com
honesty, integrity
& service since 1956