

ATTIC TREASURES... by Rob Reid

Merry Christmas to all. I welcome inquiries about any objects that you may have and look forward to seeing and perhaps writing about them. Please forward a photo and a description to me through

Whitchurch Stouffville this Month or drop it off at Reid's Antiques, 6397 Main St. Stouffville during regular business hours.

Attic Treasures: I got this Doulton figurine from my Granny several years

ago and she had it for a long time before that. What can you tell me about it? G.T.

Dear G.T. You have a Royal Doulton figurine called Christmas Morn with a HN1992 number on the bottom. The Royal Doulton factory has produced figurines since 1867 with the introduction in 1913 of the first figurine called Darling and numbered HN1. A little-known fact is why all Doulton figurines have the HN designation before the number. These letters refers to Henry Nixon who was in charge of the figurine painting department when it started. The HN numbering system is still in use today and the company has issued over 4,000 numbers.

Your figurine was modelled by Peggy Davies who was an assistant modeller for Doulton before World War II. She set up her own studio in 1946 and produced figurines on a contract basis. Christmas Morn HN1992 was her first figure for Doulton and she went on to produce many more characters until her death in 1974.

The Doulton figurine market is an active one with a wide range both in

style and price to choose from. As with all ceramics, condition is a major factor in pricing and with Doulton figures' scarcity, age and quality of decoration are also a consideration. Some of the earlier figures are painted with more attention to detail in their faces and costumes and often bring a premium over newer versions of the same model. In today's market your figurine sells for \$300 to \$350.

Attic Treasures: I bought this jug several years ago at an antique shop. What is it worth today? M.W.

Dear M.W. What you bought is referred to as a salt-glazed jug. This is a high-fired clay body literally glazed with salt that is tossed by hand onto the pot as it is fired in the kiln. This type of pottery was first made in the eighteenth century. It generally has a greyish-white surface and texture not unlike an orange peel.

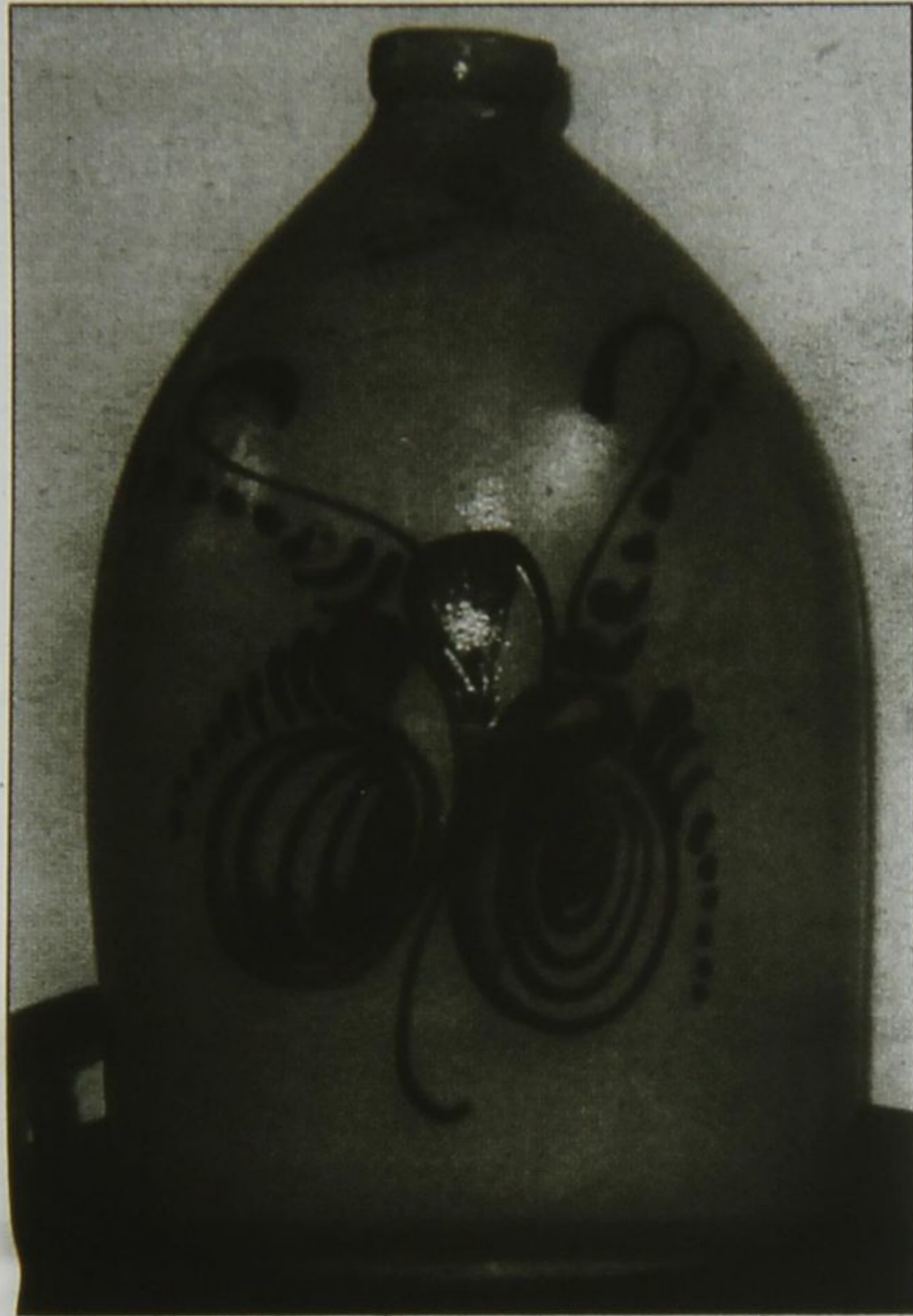
Your jug was made for F.B. Norton & Co. of Worcester, Massachusetts, probably late in the nineteenth century. F.B. Norton & Co. was likely a merchant dealing in wine or cider. It has a hand-painted cobalt blue floral-style decora-

tion. Some jugs and crocks are also decorated with birds, flowers and even butterflies.

Salt glaze collectors like to find local pieces and will generally pay more for regional items. The quality of the decoration and, of course, the condition determine what someone

will pay. Unfortunately your jug has some damage on the lip that will affect the value. In this condition a jug like this would generally sell for \$325 to \$375.

Rob Reid is the owner of Reid's Antiques and Consignment on Stouffville's Main St.



Stouffville
Country Market
Ontario's *Original* Flea Market

Great Gift Ideas

- Home Furnishings!
- Gas Fireplaces!
- Art!
- Electronics!
- Computers!
- Movies, CD's, & DVD's
- Sporting Goods!
- Stocking Stuffers!

Open
Sat. 8am-4pm
Sun. 9am-4pm

905-640-3813
12555 10th Line, Stouffville, ON
www.stouffvillemarket.com

See **SANTA**
every Saturday
in December!!

50th
Stouffville
COUNTRY MARKET
Anniversary 1952 - 2002

The staff at **Tec Guy** wants to thank all of our loyal customers for a great year and we wish you and yours a **GLORIOUS CHRISTMAS** and a **HAPPY and PROSPEROUS NEW YEAR**

Check out our line of Mouse mats called **MOUSERUGS**. Exclusively at **Tec Guy**.
3 year warranty, washable ...
Specials until December 31st for both **MOUSERUGS** and **OPTICAL MOUSE**

Congratulations to Neil Shank of Barrie.
Neil, who purchased a printer at **Tec Guy**, was the winner of the Palm Pilot in our Nov. 15 draw.
Don't forget - a Palm Pilot makes a great Christmas gift!

TEC GUY
COMPUTER SERVICES
Servicing your computer needs in the GSA (Greater Stouffville Area), Uxbridge, Markham.
On-site service for the Home/Office user.
Free consultations.

Ph: 905-642-9821 • 1-866-642-9821 • Fax: 905-642-1353
Email: scott.sommers@sympatico.ca

7 x 24 Hour Service Available