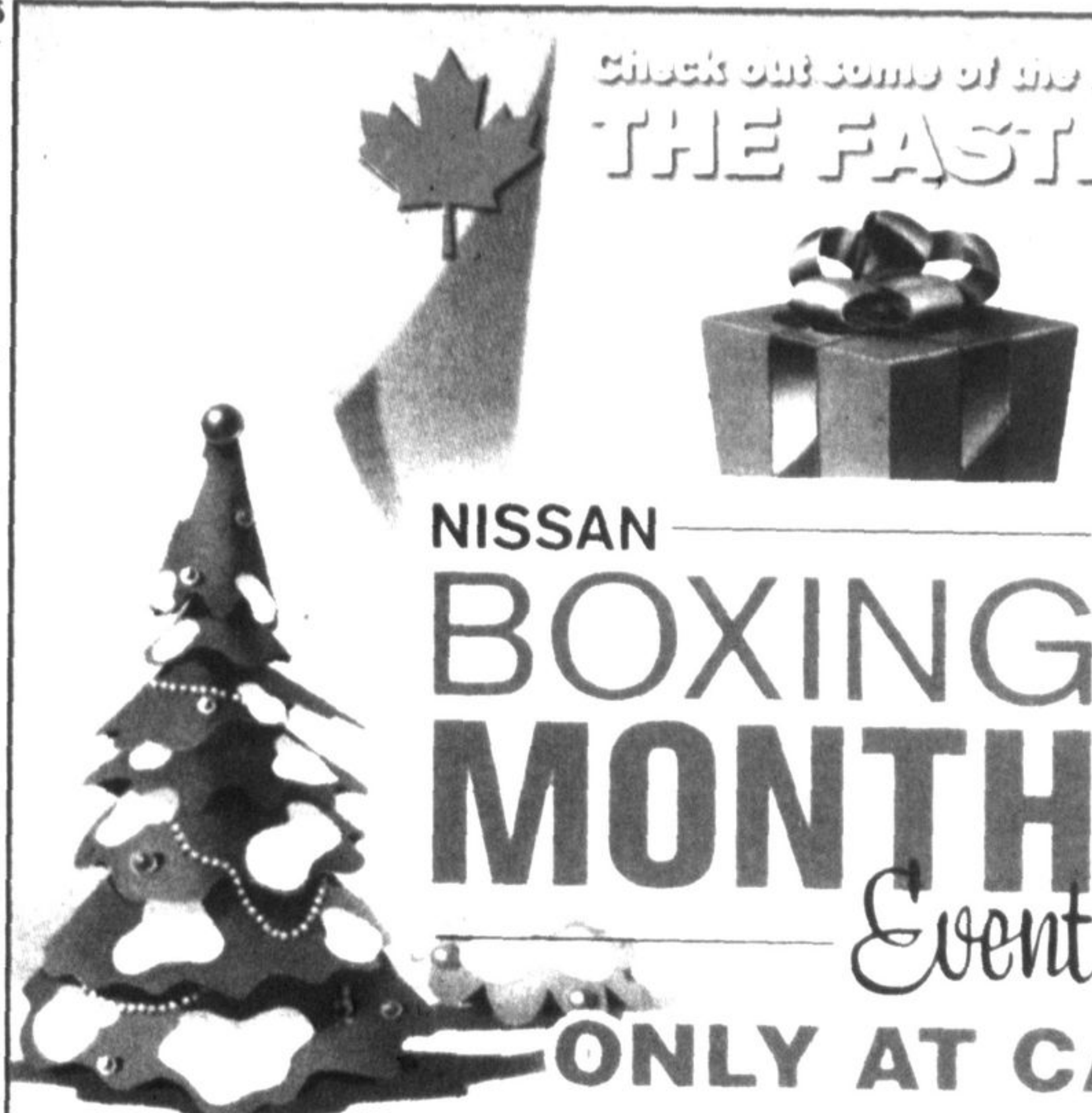


Check out some of the reasons why Nissan is

# THE FASTEST GROWING BRAND IN CANADA

Over the last 12 months in the non-luxury segment



## NISSAN BOXING MONTH Event

NOW WITH A

# \$2,000<sup>†</sup>

GIFT on select models  
(Holiday Bonus included in advertised offers)

### ONLY AT CANADA'S LARGEST NISSAN GROUP

2015 NISSAN MURANO S

**FEATURES INCLUDE:**

- NAVIGATION SYSTEM
- BLUETOOTH
- CLIMATE CONTROL
- 260 HP
- ALL NEW BODY DESIGN

LEASE SPECIAL

**\$398** /MONTH  
48 MONTHS

**\$2,700** DOWN PAYMENT  
**4.9%** LEASE RATE

PRE-ORDER THE ALL NEW 2015 NISSAN MURANO



2015 NISSAN MICRA

**FEATURES INCLUDE:**

- 1.6L, 4CYL ENGINE, 109HP
- 60/40 SPLIT FOLDING SEATS

STARTING FROM

**\$9,998<sup>\*\*</sup>**

**\$1,434.20**  
FREIGHT & FEES

WHICH MEANS YOU PAY  
**\$11,432.20<sup>†</sup>**



SR A1 model Shown\*

2015 NISSAN VERSA NOTE

**FEATURES INCLUDE:**

- A/C BLUETOOTH
- AVAILABLE CLASS-EXCLUSIVE AROUNDVIEW<sup>™</sup> MONITOR
- CVT TRANSMISSION

SEMI-MONTHLY LEASE\* FROM

**\$95<sup>\*</sup>**

WITH **\$0** DOWN AT **1.9%** APR FOR 60 MONTHS



SL S1 model Shown\*

2015 NISSAN ROGUE 2.5 S FWD

**FEATURES INCLUDE:**

- AIR CONDITIONING
- BLUETOOTH
- SATELLITE RADIO

SEMI-MONTHLY LEASE\* FROM

**\$139<sup>\*</sup>**

WITH **\$0** DOWN AT **2.99%** APR FOR 60 MONTHS



SL AWD Premium model Shown with Accessory Roof Rail Crossbars\*

2015 NISSAN PATHFINDER 4X4 SV

**FEATURES INCLUDE:**

- REARVIEW MONITOR + REAR SONAR
- HEATED FRONT SEATS
- FOGLIGHTS

SEMI-MONTHLY LEASE\* FROM

**\$220<sup>\*</sup>**

WITH **\$0** DOWN AT **3.89%** APR FOR 60 MONTHS



Pathfinder model Shown\*

ONLY UNTIL JANUARY 2ND.

VISIT [WWW.ALTAGROUP.CA](http://WWW.ALTAGROUP.CA)



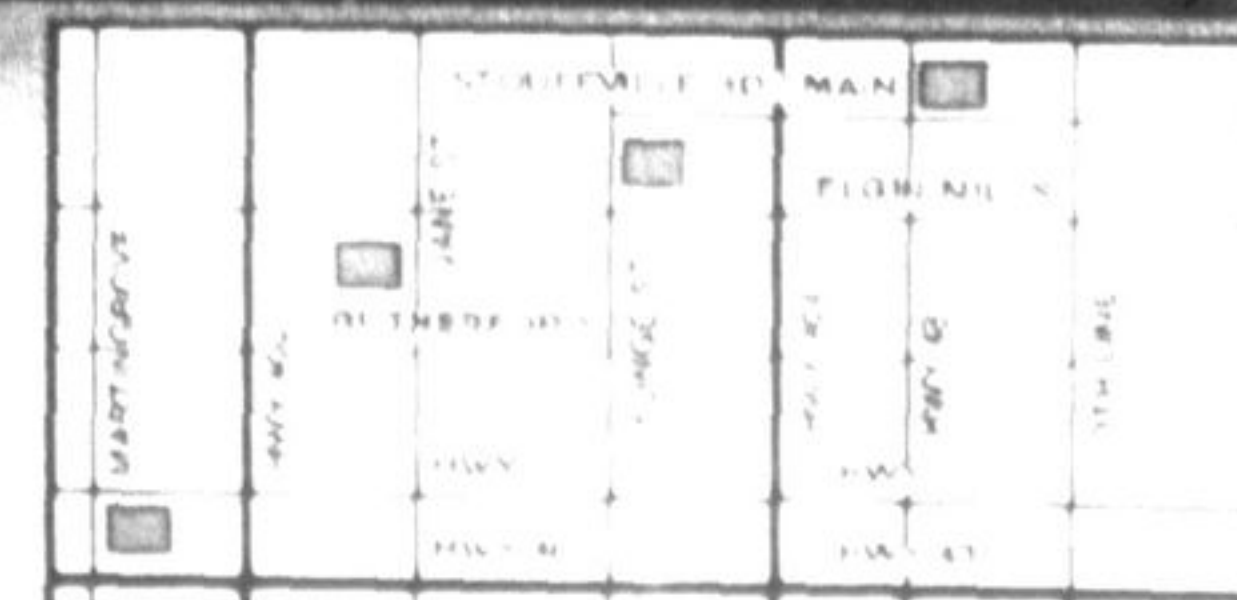
\*HST Extra

**ALTA NISSAN WOODBRIDGE**  
7625 MARTIN GROVE RD.  
(IN #7 AUTO BLVD.)  
(905) 851-1279

**MAPLE NISSAN**  
100 AUTO VAUGHAN DR.  
(JANE N. OF RUTHERFORD)  
(905) 417-7211

**ALTA NISSAN RICHMOND HILL**  
11667 YONGE ST.  
(JUST N. OF ELGIN MILLS)  
(905) 780-7771

**STOUFFVILLE NISSAN**  
95 AUTO MALL BLVD.  
(JUST N. OF STOUFFVILLE RD.)  
(905)-201-6006



OUR GIFT TO YOU SALES EVENT EXPIRES ON JANUARY 2 2015 AND MAY CHANGE WITHOUT NOTICE. 2015 NISSAN MICRA (S5L655 A400) PURCHASE PRICE \$11,432.20 PLUS TAXES AND INCLUDES ALL FEES EXCEPT REGISTRATION. 2015 NISSAN MURANO (S5L655 A400) PURCHASE PRICE \$27,000 PLUS TAXES AND INCLUDES ALL FEES EXCEPT REGISTRATION. 2015 NISSAN VERSA NOTE (R5RG15 A400) PURCHASE PRICE \$9,998 PLUS TAXES AND INCLUDES ALL FEES EXCEPT REGISTRATION. 2015 NISSAN ROGUE (S5L655 A400) PURCHASE PRICE \$13,900 PLUS TAXES AND INCLUDES ALL FEES EXCEPT REGISTRATION. 2015 NISSAN PATHFINDER (S5L655 A400) PURCHASE PRICE \$22,000 PLUS TAXES AND INCLUDES ALL FEES EXCEPT REGISTRATION. \*HST LEASE RATES ARE 1.9%/2.99% AND 3.89%. ALL LEASE OFFERS ARE FINANCED THROUGH NISSAN CANADA FINANCE. OAC. VEHICLE SHOWN ARE FOR ILLUSTRATION PURPOSES ONLY AND MAY NOT BE AVAILABLE AT ALL TIMES. ©2014 NISSAN NORTH AMERICA, INC.