

Your Community REALTY
ROYAL LEPAGE
 BROKERAGE INDEPENDENTLY OWNED & OPERATED
findahousenow.ca



Feel the Power of Success!



Vivian Risi
Broker of Record



Larry Mandlsohn
Broker/Manager



Michelle Risi
Broker/REX Academy Director

Canada's #1 Brokerage

Royal LePage Your Community Realty, people come first... and it shows!

STOUFFVILLE OFFICE: 905.642.6333



BALLANTRAE GOLF & COUNTRY CLUB

• Pinehurst Model. Approx 1700 sq. ft. Immaculate. Upgraded Kitchen/Granite. Upgraded Hardwood Flooring.
\$579,900.

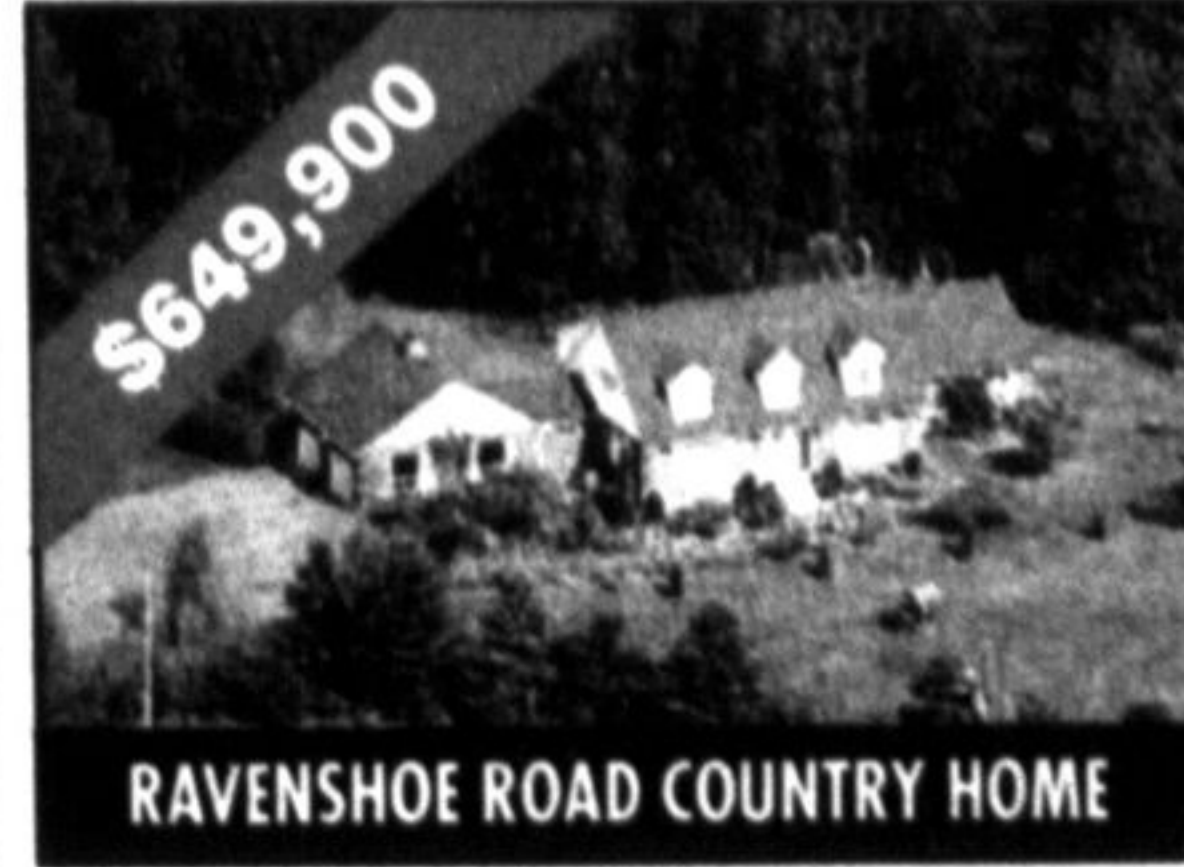
Call Michele or Frank Jago
 Direct at 416 709 1502 or
 email mjago@robnet.com.
 Visit www.jagohomes.com



MCCOWAN & VIVIAN RD.

• 4 bdrm brick bungalow on 24 acres! Barn, paddocks, insulated workshop & equipment shed. Near Newmarket & Vivian Forest. Horse lovers paradise
 mls # N2899049

Call Debbi Jefferson*/Howard Lee*
 Direct: 905-642-6333
 www.countrylistings.com



RAVENSHOE ROAD COUNTRY HOME

• Custom built Cape Cod on 10 acres with pond. Open concept kitchen/family room. Annex on main level used as a shop & office or an apartment. Priced to sell !!!-Mins. to 404 mls # N2932781

Call Debbi Jefferson*/Howard Lee*
 Direct: 905-642-6333
 www.countrylistings.com



APPALACHIAN LOG HOME

• On 2+ acres in Cannington. Backs to farmers fields, A true log home cosy feel, insulated workshop & carport, soaring ceilings, F/P's, MF Master & wood floors.
 mls # N2987787

Call Debbi Jefferson*/Howard Lee*
 Direct: 905-642-6333
 www.countrylistings.com



FEASBY RD. BRICK BUNGALOW

• In Uxbridge, picturesque 10 ac. 3 bdrm, 4bath with many updates. Bright Walk-out Granny Flat, 1 bdrm. w/eatin kitchen, 8 min. to Go! Priced to sell!!!
 mls # N2979208

Call Debbi Jefferson*/Howard Lee*
 Direct: 905-642-6333
 www.countrylistings.com



12999 REGIONAL RD 39

• Charming Century Building with Store and up to 3 APTS. Live and working from Home Outside Uxbridge C1 Homelet Zoning Allows Broad List of Business Let You Work/Tenant Pay for Your Home!

Call Mike Marsden
 Direct at 416-917-0890 or
 email mmars@rogers.com



MILTON CALLS

• Milton/Ontario's Fastest Growing City. If You Move West Don't Miss this Stunning 3BR, 3BTH FIN BSMNT TH All Appliances included Tasteful Mix of HRDWD, Tile, Broadloom Huge Master with Ensuite.
 mls # W3031723

Call Mike Marsden
 Direct at 416-917-0890 or
 email mmars@rogers.com



70 CEDARVALE BLVD., MUSSELMAN LAKE

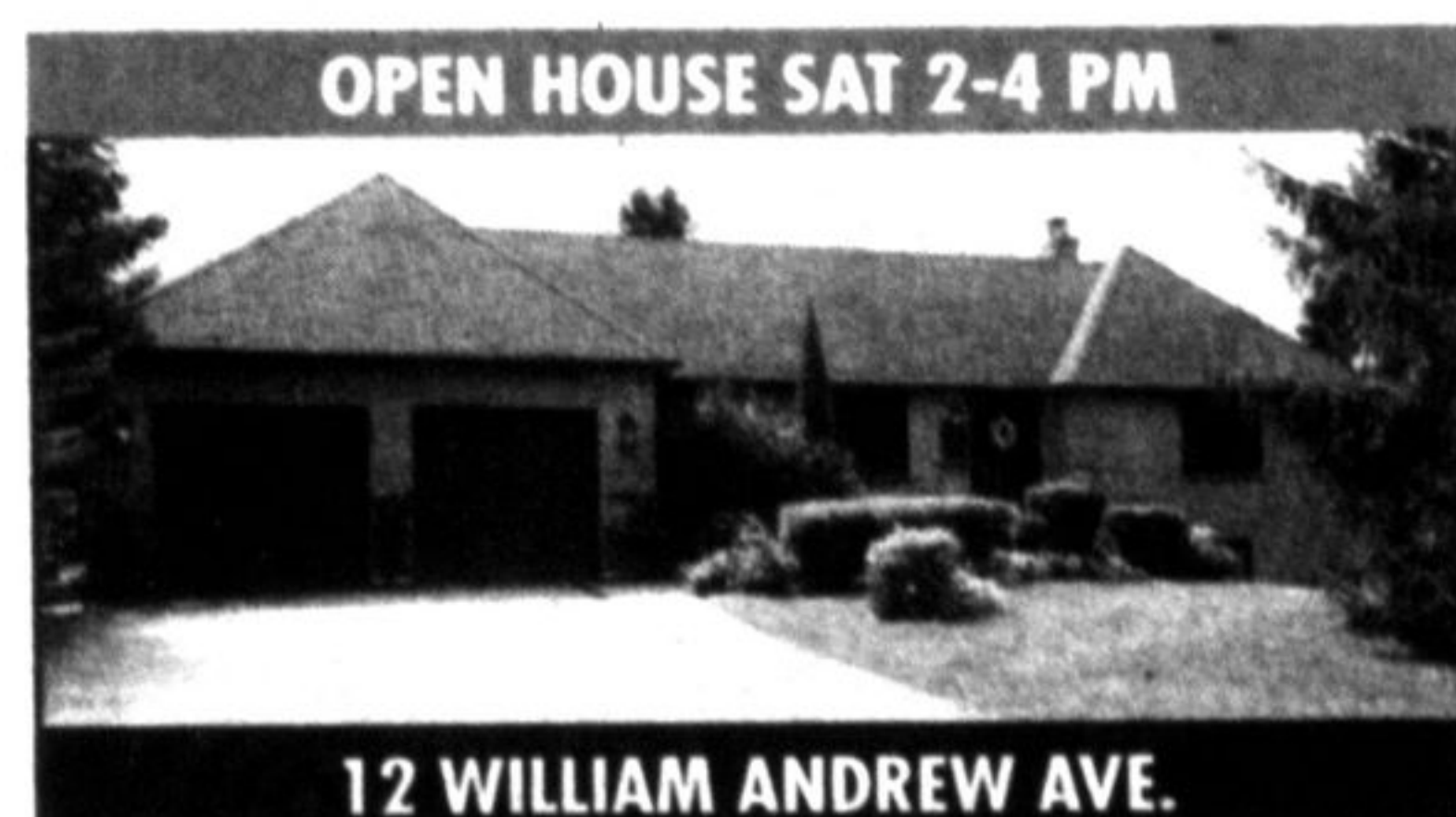
• Seeking a Quiet Lifestyle? Situated on a dead end street you can relax in your perennial gardens, view the lake and plan your dream home. This starter home is on a 15.9 x 34.44 meter lot, ten minutes to the GO station with municipal water and more.

For your private viewing contact
 Lynda Sargeant
 905-642-6333

Vivian Risi, BROKER OF RECORD
 and **Larry Mandlsohn, BROKER/MANAGER**
 are pleased to Welcome
Vivian Yeung, SALES REPRESENTATIVE,
 to our **Stouffville team.**



Vivian Yeung, BA, is a full time licensed Realtor with a background in sales. She speaks fluent English, Mandarin, Cantonese and Hakka, and with her well-rounded sales experience, strategic negotiating skills, and keen eye for details, Vivian makes sure her clients receive the utmost service in any situation. Her professionalism will exceed your expectation. Come by the Stouffville office to visit her! She will be more than happy to answer any real estate related questions! She is a dedicated Sales Representative who lives and work in your Stouffville community!
What are you waiting for! Call her for your FREE home evaluation!



OPEN HOUSE SAT 2-4 PM

12 WILLIAM ANDREW AVE.

Beautiful Estate Home Overlooking the 7th Hole of Maples of Ballantrae Golf & Country Club. Designer Kitchen with Granite Counters & Stainless Steel Appliances, Exquisite Formal Dining Room, Hardwood Floors, Leaded Glass Windows, Fireplaces. Renovated Bathrooms. Large Deck for Entertaining.
 Manicured Tree Setting.

Call Carol Taplin - Direct 416-518-6422
 www.caroltaplin.com



OPEN HOUSE SAT 2-4 PM

11 ROSEDALE COURT STOUFFVILLE

Executive Family Home On Over 1/2 Acre Located In Tread Cul-De-Sac Complete With Inground Concrete Pool & Gazebo and Insulated 1200 Sq Ft Workshop. Office On Main Floor! Open Concept Family Room And Kitchen With Fireplace. Formal Living Room. Perfect For Entertaining! A Must See!

\$849,900

CAROL TAPLIN

Direct 416-518-6422 www.caroltaplin.com



PREMIUM LOT!

80 LONG STAN

Very tastefully decorated Pinehurst Model in Award Winning Ballantrae Golf & Country Club. Premium Lot, Spacious Kitchen w/Granite Counters and Stainless Steel Appliances, Fireplace with 43" TV ready to watch! Rare Private Patio in Rear with Power Awning. Meticulously Maintained and Wonderful Amenities to Enjoy!

Call Carol Taplin - Direct 416-518-6422
 www.caroltaplin.com



Jennifer MacLean



Brian Klem



Howard Lee



Carol Taplin



Jeff Elder



Steve Lummiss



Frank Jago



Michele Jago



Deborah Marlene Jefferson



Len Powell



Mike Marsden



Deanna Pescador



John White



Gus Tangas



Lynda Sargeant



Themi Gregoriou



Vivian Yeung

www.YourCommunityRealty.com

* sales representative ** broker

Aurora
Office
905.727.3154

Thornhill
Office
905.889.9330

Toronto
Downtown Office
416.637.8000

Unionville
Markham Office
905.940.4180

Stouffville
Office
905.642.6333

Vaughan
Office
905.832.6656

Keswick
Office
905.476.9543

Richmond Hill
Office
905.731.2000

Jackson's Point
Office
905.722.7272