

MUNICIPAL ELECTION

# Ballantrae council candidate wants library/leisure centre expanded

BY SANDRA BOLAN  
sbolan@yrmg.com

It should be important to voters to know the community involvement of candidates, as well as their stance on the library/leisure centre expansion, according to Maurice Smith, Ward 2 candidate.

Smith is making his second bid for the position. He lost last time, in 2010, to incumbent Phil Bannon. Bannon will not seek re-election as

he has opted to run for mayor this October.

Adam Schickedanz is the other candidate in the ward that includes Musselman's Lake and Ballantrae.

"What we put in place now will have an effect on the future," Smith said.

The potentially single biggest election issue is the library/leisure centre expansion in Memorial Park, he said.

Smith, who stepped down as

chairperson of the Whitchurch-Stouffville Public Library last year in order to run for council, has been involved with the project since the beginning and wants to see it through to completion.

Smith remains on the library board. He joined in 2006.

Since 1998, Smith has been the president of a business consulting firm that deals with real estate, which he said will be helpful, as a councillor, in ensuring the project

gets done correctly.

Smith also wants to complete the tennis court dome in Ballantrae.

Smith wants to carry on with Ballantrae events, if their founder and organizer Bannon, is unable to do so. Those events include the fall fair and Victoria Day Fireworks.

"While we try to make them for all of Stouffville, they take place here, in Ward 2, in Ballantrae," he said.

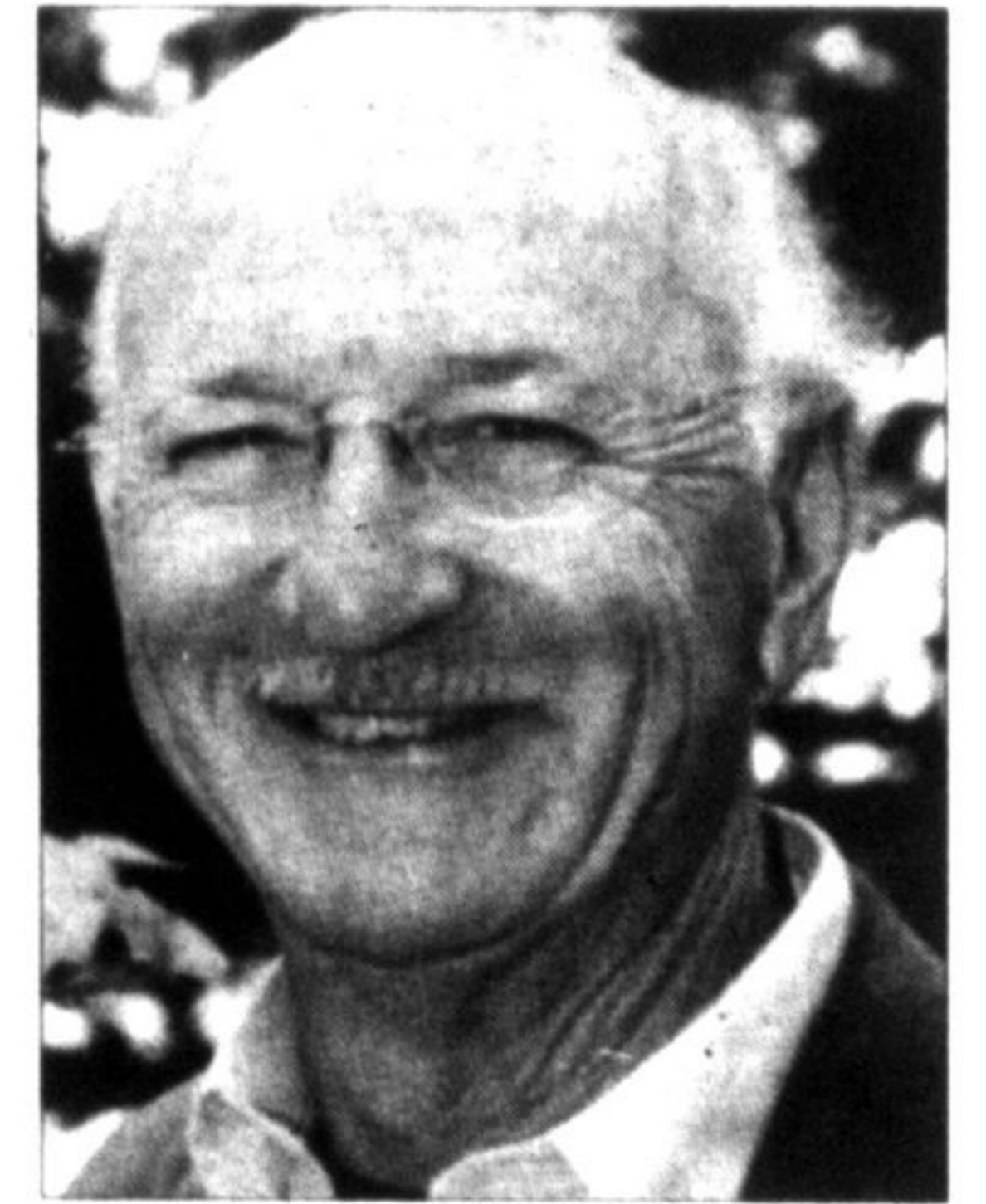
Since moving to Whitchurch-Stouffville in 2004, the Ballantrae resident has not only become involved with the library board, but he and his wife Jane have been co-chairpersons of the annual Community Christmas Dinner at EastRidge Evangelical Missionary Church for a number of years.

In 2012, Smith was recognized for his volunteer work with the Ontario Volunteer Service Award.

"It was unexpected. I've been doing volunteer work for so long I didn't think anybody would nominate me, but they did," he said.

He is also a life member of the Association of Kinsmen of Canada for his work with Cystic Fibrosis.

When it comes to changing the afternoon council meeting schedule to enable more resident attendance,



**MAURICE SMITH:** Ward 2 candidate likes events Phil Bannon already hosts in Ballantrae.

Smith said it's not necessary. "It's a good mix," he said, adding people will make it a priority to attend meetings they feel they need to.

Smith is married, with four children and 10 grandchildren.

When asked his age by The Sun-Tribune, he said, "I'm mature enough to be a stabilizing influence on council".

The municipal election takes place Oct. 27.

*What's your biggest election issue?*

Tell us on:

**yorkregion.com**  
Click on Whitchurch-Stouffville and take the poll

**ZWILLING**  **J.A. HENCKELS**  
**WAREHOUSE SALE**  
**SEPTEMBER 19 - 21, 2014**  
**SAVE FROM 40-70%**  
**ON MOST ITEMS**

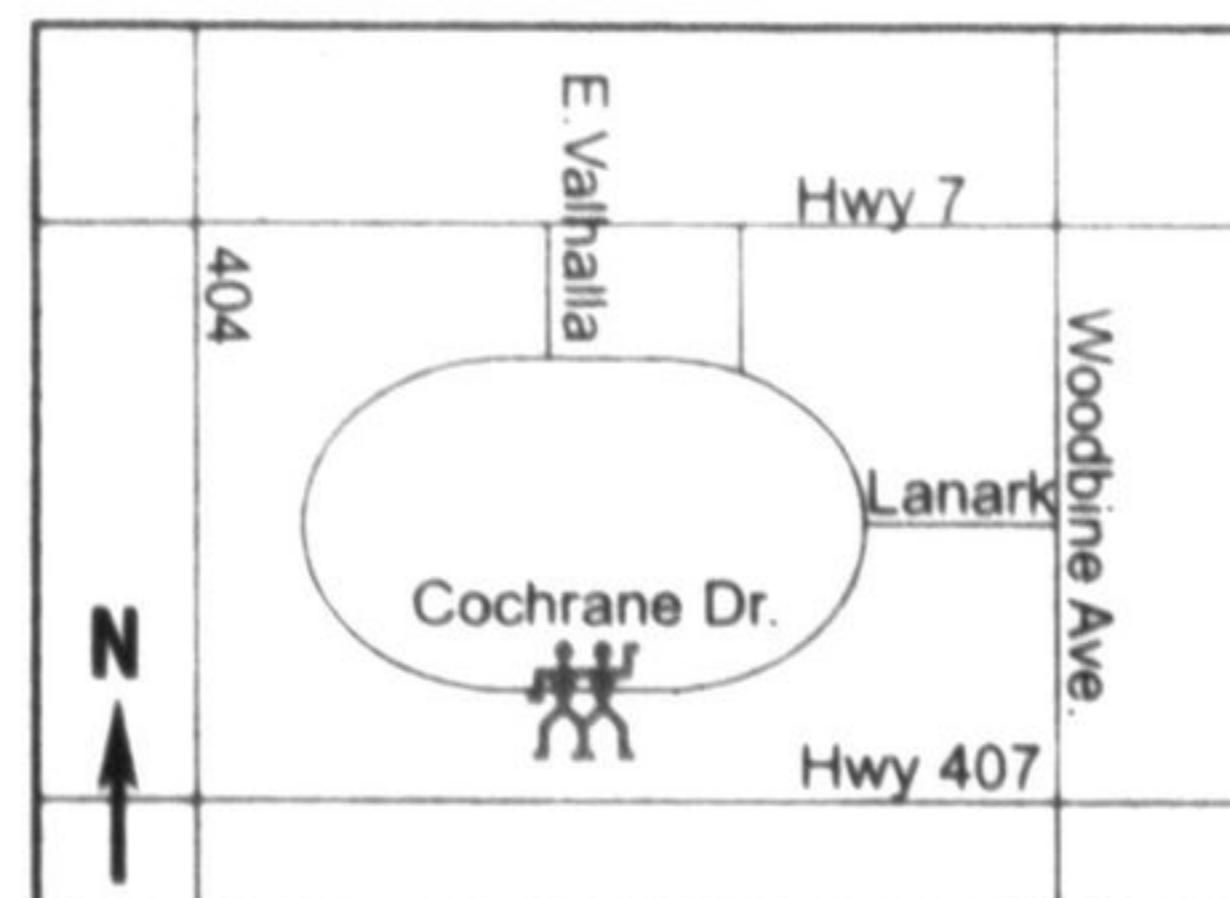
Featuring a special selection of seconds, discontinued, overstock and products in damaged packaging.



Sept. 19: 10 am - 7 pm  
Sept. 20 & 21: 10 am - 4 pm  
Location: 435 Cochrane Drive  
Markham, ON L3R 9R5

Cash, Debit Card, MasterCard & Visa only.  
No returns or exchanges. All sales final.

CHILDREN UNDER THE AGE OF 12 ARE NOT PERMITTED.



## WOMEN'S CENTRE OF YORK REGION

*invites you to attend*

### ENTERPRISING CAREERS

A career exploration program for women  
10 weekly group sessions plus individual coaching  
**Topics include:** Self-assessment, Labour Market Trends, Researching Occupations, Creating an Action Plan  
**For more information:** contact the Program Coordinator at 905-853-9270(x103) or email rlawless@wcyrc.ca  
You can also go to our website: www.wcyrc.ca  
Program funded by the Region of York

### FINANCIAL EMPOWERMENT

We are on a mission to boost financial empowerment for women.  
8 weekly group sessions plus individual financial coaching  
**Topics include:** Budgeting, Saving for Education, Generating Income, Managing Debt, Credit and Credit Report  
**For more information:** contact the Program Coordinator at 905-853-9270(x205) or email gpitschke@wcyrc.ca  
You can also go to our website: www.wcyrc.ca  
Program funded by the Region of York

Women's Centre  
OF YORK REGION

York Region