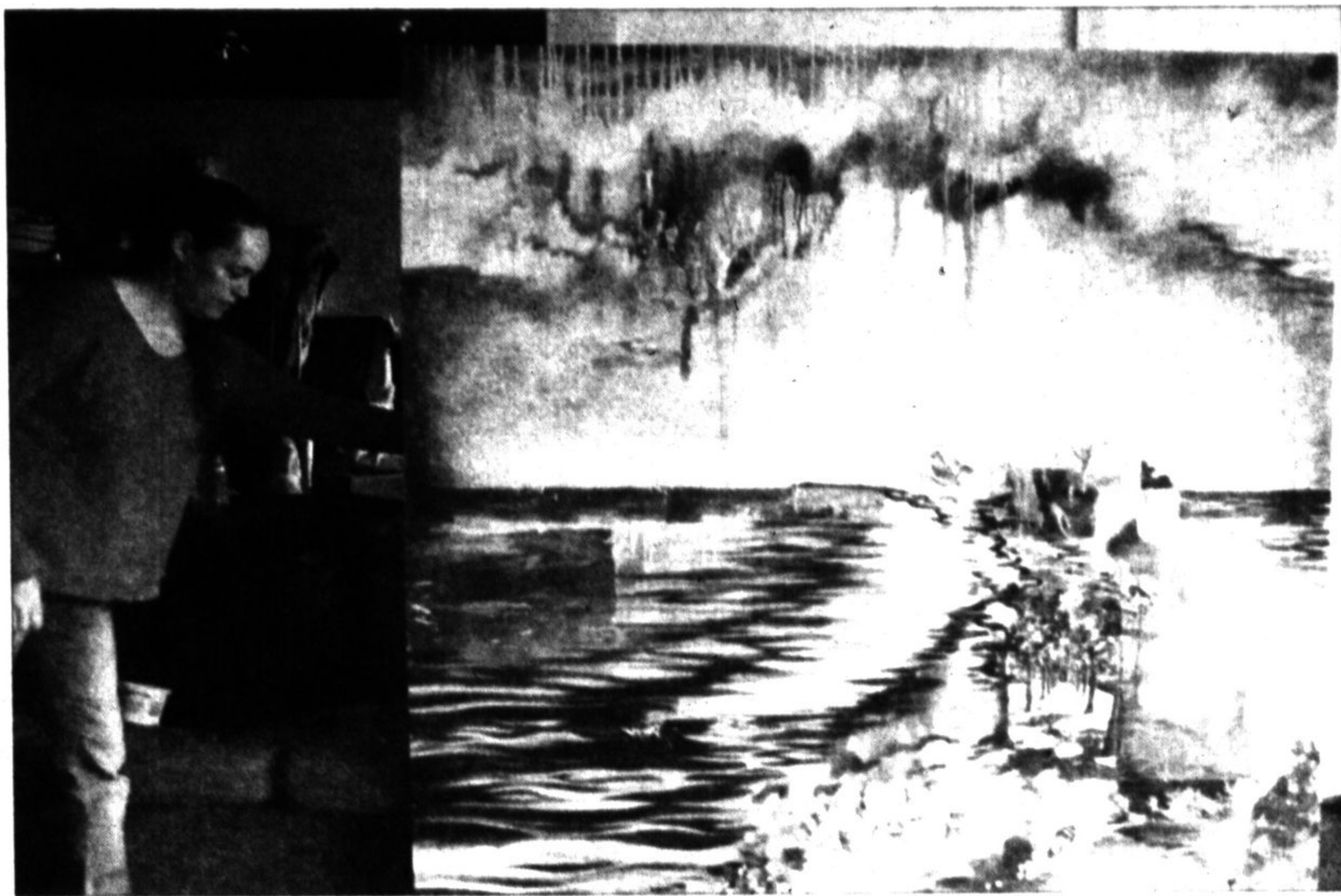


COMING UP



SUBMITTED PHOTO

Anong Migwans Beam's show starts July 17 at Latcham Gallery.

Reservoir show features works by First Nations artist

BY SANDRA BOLAN
sbolan@yrmg.com

Manitoulin Island, which Duncan called "a magical, amazing place".

First Nations artists have a unique connection to the natural world, according to Chai Duncan, curator of the Latcham Gallery.

That is why, when possible, the public gallery features exhibitions by First Nations artists. This year, that artist is Anong Migwans Beam.

Her show, Reservoir, runs July 17 to Sept. 6.

Duncan came across Beam while actually looking at her father - Carl Beam's work.

"She's certainly been influenced by him," Duncan said.

"(But) her work is distinctly her own. It's lush, it's fluid, no pun intended."

The younger Beam lives and works on

Beam's show features large paintings, image transfer as well as mono prints and speaks to a message the gallery often has threaded through its exhibitions - the environment.

"The power and the beauty and the need we have for clean water," Duncan said is represented in Beam's show.

He also hoped the exhibition will make people "stop and think about the place we live. We can all perhaps not take our water for granted; treat it with the respect it deserves."

The show opens July 17 with a reception from 7 to 9 p.m. The artist will be present and everyone is welcome.

For more information, go to www.latcham-gallery.ca

Artist donates 'Spinning Branch'

BY SANDRA BOLAN
sbolan@yrmg.com

Downtown's sculpture walk may get another piece.

Claremont artist Heather Rigby has donated a sculpture called Spinning Branch to the municipality.

"I don't think it happens as regularly as I would like," said Joan Crosbie, manager of culture for the Town of Whitchurch-Stouffville of artists who contact the municipality wanting to donate original art.

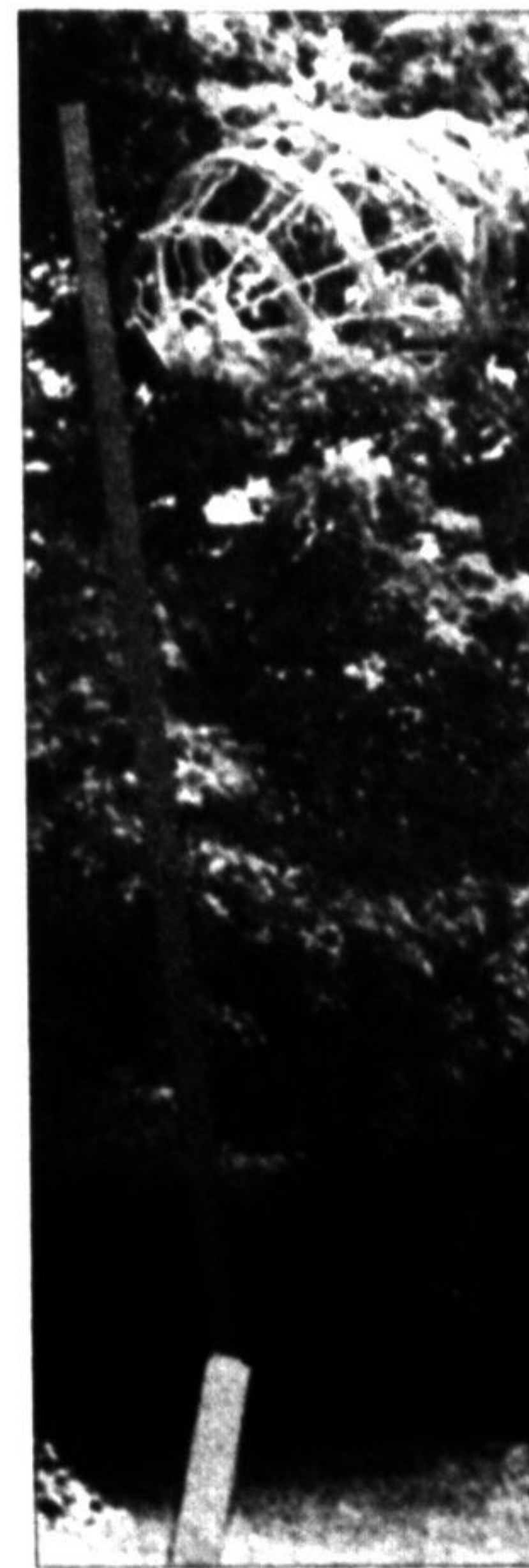
The sculpture walk, which goes from Latcham Gallery and along the creek to Memorial Park, currently has eight pieces installed from artists Anne Allardyce, Ron Baird, Ted Bieler E.B. Cox, Bill Lishman and Karena Massengill.

The town hall's walls are adorned by a number of pieces donated by local artists.

"It's always nice, from my point of view, to have art representative of artists in the community," Crosbie said.

Crosbie is hoping Spinning Branch will find a place along the sculpture walk near Memorial Park.

The piece is currently still with the artist, but Crosbie expects to have it by the end of July.



She hopes to have it installed before winter.

When contacted by The Sun-Tribune, Rigby would not comment on why she donated the sculpture to the town.

"... I would prefer to respond to your email once things have fallen into place more accurately," she told The Sun-Tribune via email.

CORRECTION

The story 'Stouffville Inn officially Days Inn', appearing in the July 3 edition of the Stouffville Sun-Tribune should have stated that each hotel under the Days Inn brand is independently owned and operated. We regret any confusion.

FLYERS

Inserts for Thursday, July 10, 2014

2001 AUDIO	NO FRILLS
BEST BUY	ORIENTAL FOOD MART
BOUCLAIR	PIZZA HUT
BRICK MATTRESS	REAL CANADIAN SUPERSTORE
CANADIAN TIRE	REXALL
FIRST CHOICE	RONA
FOOD BASICS	SCAN DÉCOR
FOODLAND MT ALBERT	SEARS
FOODY MART	SHOPPERS
FRESHCO	SLEEP COUNTRY
GIANT TIGER	SOBEYS
GOLF TOWN	STAPLES
GRAND FORTUNE	STOUFFVILLE IDA
HARVEY'S	SUNFOOD
HEALTHY PLANET	SUNFOOD SUPERMARKET
HOME DEPOT	SUNNY FOODMART
HOME HARDWARE	T&T SUPERMARKET
IHI INVESTMENTS	TARGET
LASTMANS BAD BOY	THE BAY
LISTEN UP	THE BRICK
LITTLE CAESARS	THE SOURCE
LOBLAWS	TSC STORES
LONGO'S	UNITED FURNITURE
LOWES	WALMART
M&M MEATS	WOODGREEN PHARMACY
METRO	XS CARGO
MINDTECH MONTESSORI	YUMMY MARKET
NEW OCEAN SUPERMARKET	

No one delivers results like we do!
To find out more about how to reach your target market and get the same great response from your flyer distributions as these customers, call us today! *Selected areas only

Stouffville
Sun-Tribune
visit flyerland.ca

905-294-2200

AROUND THE REGION

PAN AM COUNTDOWN

Enjoy major entertainment, great sport and cultural activities, and delicious food from around the world Sunday, July 13 from 2 to 8 p.m. to celebrate the 1 Year Countdown to Markham the 1 Year Countdown to TO2015 Pan Am/Parapan Am Games. Sports

enthusiasts will appreciate huge screen to watch the FIFA World Cup Final. Festival takes place on boulevard outside Markham Pan Am Centre (Main St Unionville & Enterprise) and at Bill Crothers Secondary School.

GARDEN TOUR

Markham Horticultural Society biennial garden tour of private gardens runs noon to 4 p.m. Sunday, July 13. Tickets at Sheridan Nurseries, Kate's

Garden, Kim's Nature, Valleyview and York Downs Garden Centre.

FELLOWSHIP BAPTIST CHURCH CAMP

Summer Day Camp runs July 21 to 25 for ages 5 to 12, from 8 a.m. to 4 p.m. at Fellowship Baptist Church Markham. Register now for a week of music, singing, games, crafts, outdoor activities, bible studies and more. Registration, including materials, \$70. For more information: Harold Taylor 905-470-9775.

Bouclair HOME

READY-TO-HANG
40% OFF* CURTAINS
84" LENGTH - 96" LENGTH

*The regular price. From July 9th to July 15th, 2014. While quantities last. Selected merchandise. See stores or online for details. Cannot be combined with any other offer.

WIN A
\$2500

HOME MAKEOVER & A STYLIST CONSULTATION
Visit bouclair.com for details.

SHOP BOUCLAIR.COM
FREE SHIPPING TO YOUR STORE

see what's new in today's flyer

The BRICK.com

The BRICK.com SAVING YOU MORE!

Parking Lot Sale!

UP TO 60% OFF

PLUS TAKE 36 MONTHS TO PAY WITH NO INTEREST ON EVERYTHING IN THE STORE!

PLUS PAY THE LOWEST PRICE FOR THE FIRST TIME EVER!

TV SPECIALS

Haier 19" 120p LED TV \$118.99

Haier 42" 1080p LED TV \$468.99

SAMSUNG 42" 1080p LED TV \$598.99

SAMSUNG 15" 1080p 120Hz Smart LED TV \$319.99

On Now at The Brick!

For more details go instore or online @thebrick.com.