

# TOWN OF WHITCHURCH-STOUFFVILLE

Customer Service Centre:  
905-640-1900 or 1-855-642-TOWN (8696)  
Automated Lines:  
905-640-1910 or 1-855-642-TOWS (8697)

111 Sandiford Drive, Stouffville, ON L4A 0Z8

www.townofws.ca

## NOTICE OF COUNCIL MEETINGS



Council Chamber • 111 Sandiford Drive

**TUESDAY, APRIL 15**  
Council Meeting - 3 p.m.  
Public Meeting - 7 p.m.

- Proposed Zoning By-law Amendments:
- 11737 McCowan Road, Part of Lot 32 Concession 7.  
File no. ZBA13.017
  - 9 Hunters Road, Part of Lot 16 Concession 4.  
File no. ZBA14.002

**TUESDAY, APRIL 22**  
Alternate Public Meeting - Not Necessary

The agenda for these meetings will be available for review at the Municipal Offices, Whitchurch-Stouffville Public Library and on our website at noon the Thursday prior to the meeting. The Calendar of Council meetings for this year is available on our website. Council Meetings will be audio-recorded and broadcast on WhiStle Radio 102.7 FM.

## NOTICES CONT'D

### WS PUBLIC LIBRARY AND LEISURE CENTRE EXPANSION

Wednesday, April 16 from 7 p.m. to 9 p.m.  
19 on the Park - 19 Civic Ave.

Second Public Consultation Meeting - Revised designs (based on public feedback) from the first public consultation meeting will be presented at this meeting. For more information visit, [www.townofws.ca/expansion](http://www.townofws.ca/expansion).

## UPCOMING EVENTS

### FIND YOUR UNIQUE VOICE: BUSINESS COMMUNICATION WORKSHOP

Wednesday, April 23 from 5:30 p.m. to 7 p.m.  
Municipal Offices

Develop confidence in networking and sales by creating and communicating a clear message on the spot, under pressure. Free workshop. Please sign up with Nirvana Champion at 905-640-1910 ext. 2301 or [nirvana.champion@townofws.ca](mailto:nirvana.champion@townofws.ca).



### 3M CLOUD LIBRARY FOR E-BOOKS

Saturday, May 3 at Stouffville Home Show

Have you been getting e-books from your library? Check out the new 3M Cloud library for e-books for even more great content at the Stouffville Home Show!

## 2014 MUNICIPAL ELECTION

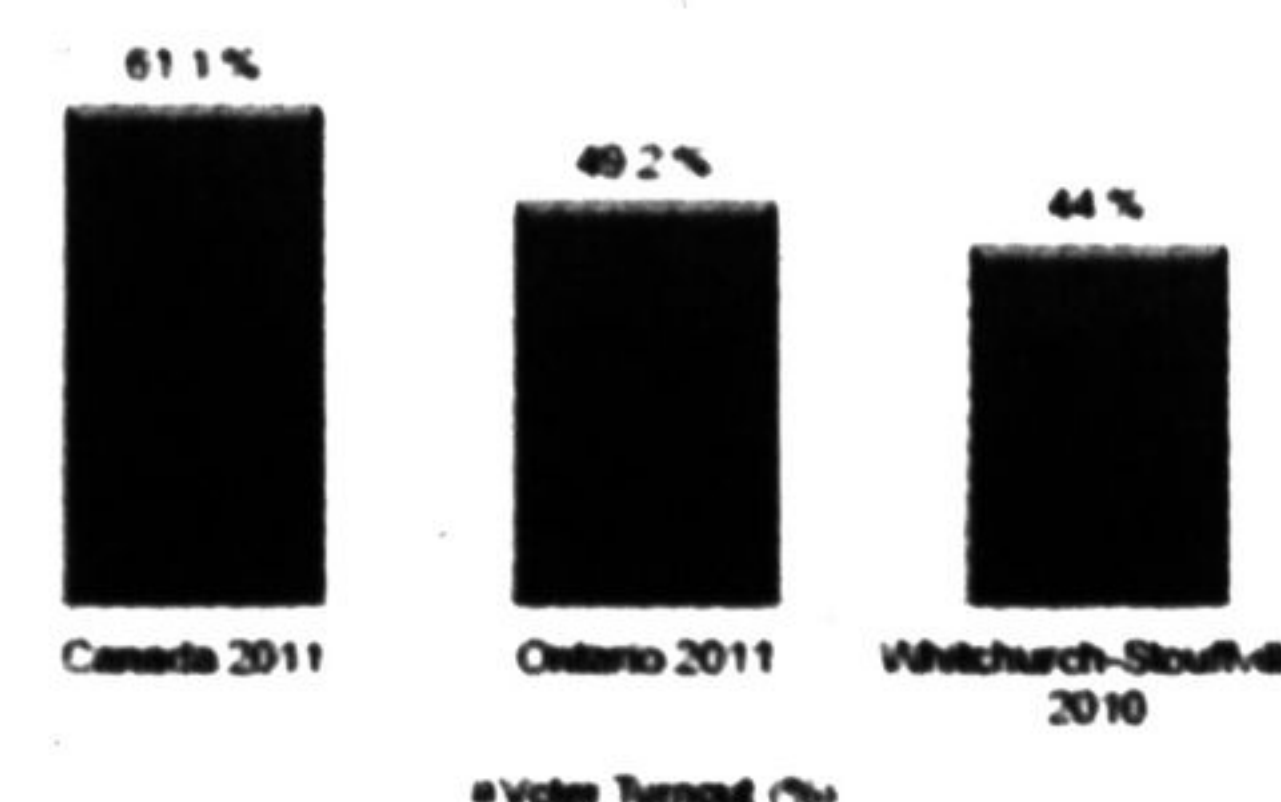
### ARE YOU ELIGIBLE TO VOTE?

In order to vote during the 2014 Municipal Election, you must be:

- A Canadian citizen;
- 18 years of age on or before October 27, 2014;
- Either a resident of the Town of Whitchurch-Stouffville, or you and/or your spouse are non-resident owner or tenant of property in the Town;
- Not prohibited from voting under any law.

### VOTER TURNOUT

Traditionally, Municipal Elections experience a lower voter turnout compared to Federal and Provincial Elections.



Send us your suggestions to improve voter turnout for the upcoming Municipal Election on Twitter #Vote2014WS or Facebook.

Town of Whitchurch-Stouffville @townofws

## NOTICES

### LIBRARY BOARD MEETING RESCHEDULED

Library Board meeting scheduled for Thursday, April 3 has been rescheduled to Thursday, April 17 at 7 p.m. in the Whitchurch Room at the Municipal Offices.

## What's On in Whitchurch-Stouffville

Leisure & Community Services 905-642-PLAY (7529) [leisure.services@townofws.ca](mailto:leisure.services@townofws.ca)

Museum 905-727-8954 or 1-888-290-0337 [wsmuseum@townofws.ca](mailto:wsmuseum@townofws.ca)

### Get a jump on spring... start your outdoor activities indoors NOW!

**Soccercity Indoor Active Living Opportunities**  
Drop In Walking Club  
Monday to Friday from 9 a.m. to 11 a.m.

**Sports Drop-In Programs 2014**  
Badminton, Pickle Ball, Basketball at various locations. See the full schedule online.

**Register at Leisure Centre for Soccercity Programs**  
Urban Poling - Tuesdays at 10:30 a.m.  
Boot Camp - Mondays at 5 p.m.  
Mom & Baby Boot Camp - Thursdays at 10:30 a.m.

**Spring Fitness Membership Special**  
Available Monday, April 14 - Sunday, May 18  
4 months for the price of 3  
Visit the Leisure Centre for details or call 905-642-PLAY.

Library 905-642-READ (7323) or 1-888-603-4292 [www.wsplibrary.ca](http://www.wsplibrary.ca)

**MANDARIN SENIORS' SUPPORT GROUP SERIES - GO MANGO!**  
Bi-weekly series in Mandarin beginning Tuesday, February 4 from 1 p.m. to 2:30 p.m.  
Moving to a new country is not easy. The support group is here to help. In this series, you will practice daily English using the Mango Language database in the library.

For more information, call 647-721-7616 or email [LSP@ccsyr.org](mailto:LSP@ccsyr.org)



**PAWS 4 STORIES**  
Thursday, April 3 - Thursday, May 22  
4 p.m. - 5 p.m. Grades 1-3  
Provides children a unique opportunity to read to a dog and make a friend! 30 minute sessions. Pre-registration is required!



**WHAT'S YOUR LEGACY: PUT IT DOWN ON PAPER!**  
Tuesday, April 15 - Tuesday, May 20  
10 a.m. - 12 p.m.  
Cost \$75 + HST. Pre-registration required!



**WHITCHURCH-STOUFFVILLE JANE'S WALKS**  
Saturday, May 3  
Walks at 10:30 a.m. and 1:30 p.m.  
More details coming soon!



**ZINIO**  
Come in and ask staff for details.



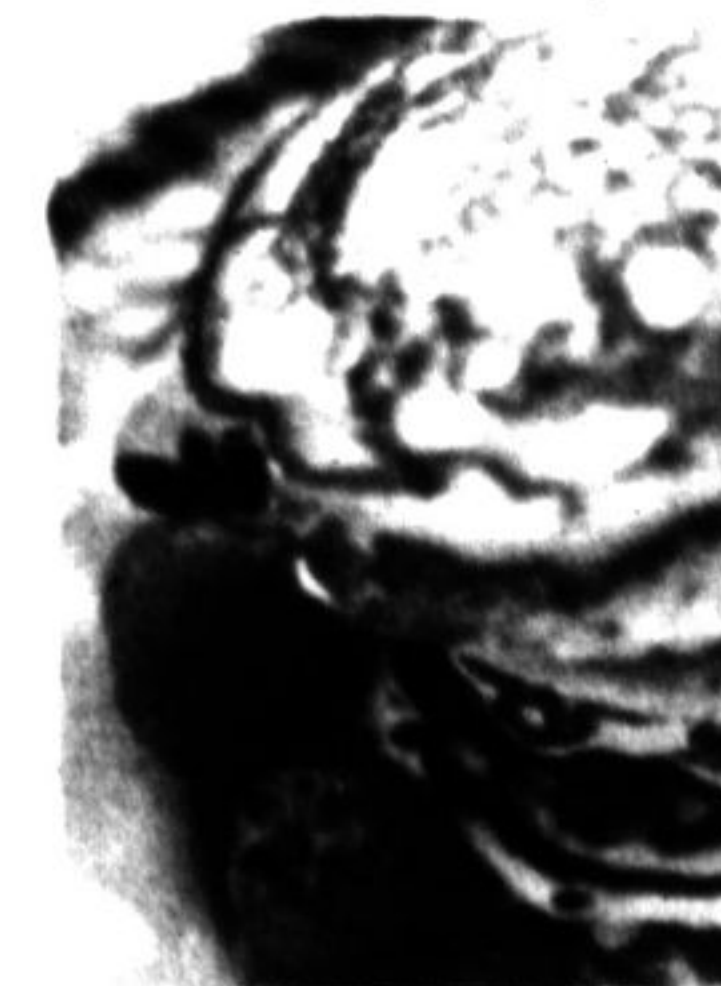
**ESL CONVERSATION CLUB**  
Wednesdays. Pre-registration is required.



### PANCAKE BRUNCH

Sunday, April 6 from 11 a.m. - 2 p.m.

Welcome the first signs of spring with a delicious pancake and ham brunch, topped off with locally produced maple syrup. Children's interactive story included!



### APRIL SHOWERS... BRING MAY FLOWERS

Sunday, April 6 - Saturday, May 10

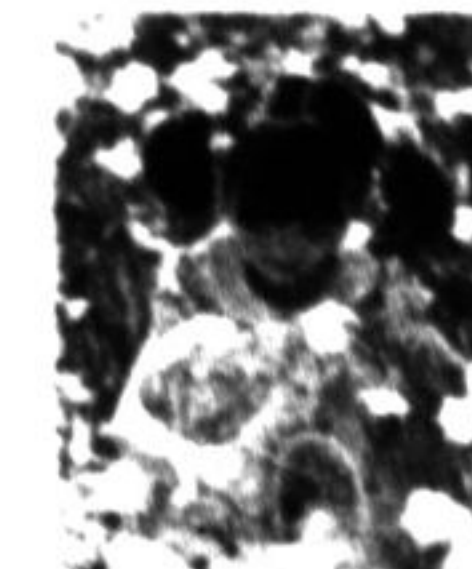
Featuring the museum's collection of umbrellas, parasols and artifacts featuring floral motifs.



### EASTER "HOP-PENINGS"

Saturday April 19 - 1 p.m. or 3 p.m.

Decorate freshly baked sugar cookies, create an eggshell work of art and go on an Easter egg hunt! Recommended ages: 3-10. Pre-registration required.



### WEDDINGS, BIRTHDAYS, AND MORE!

Summer and Fall availability is booking up quickly! Call 905-727-8954 today to book this intimate and unique setting for your next event! Wedding packages are now available!



Visit [www.wsmuseum.ca](http://www.wsmuseum.ca) for more information!