

Art, dance, athletics, magic served up during March break

BY SANDRA BOLAN
sbolan@yrmg.com

There is no shortage of activities taking place this March break — March 10 to 14 — to keep children of all ages busy.

Hockey camp

The Town of Whitchurch-Stouffville is hosting a hockey camp for six to 12 year olds.

Campers can attend for half a day (morning or afternoon) or the full day.

On-ice activities include power skating and hockey skills. Off-ice fun consists of movies and games.

The cost is \$165 (half day) or \$265 (full day)

For more information and to register, go to www.townofws.ca

Mix of sports

A multitude of sports, such as basketball, volleyball and archery, will be played by seven to 14 year olds who attend the Atlas Sports Camp.

The camp is offered in partnership with the municipality and reinforces the importance of a healthy, active lifestyle.

Registration is available only in-person at the Whitchurch-Stouffville Leisure Centre, 30 Burkholder St.

Get outdoors, kids

Offering different kinds of activities such as snowshoeing, rock climbing, tobogganing and drama games is Willowgrove Farm.

Campers aged three to 13 can attend one day (\$50) or all week (\$250).

For more information, go to www.willowgrove.ca

Do you wanna dance?

Stouffville Academy of Music and Dance is offering two camps: dance intensive, which is recommended for dancers seven years and older, and junior dance camp, which is for four to seven year olds.

Each camp costs \$199. Technique work will be taught in jazz, tap, ballet, contemporary, lyrical, breakdance, musical theatre, acro, drama and hip hop.

Camps are suitable for new and recreational dancers as well as the more experienced and competitive.

For more information, go to www.stouffvilleacademy.com

Campers in productions

Motus O, Whitchurch-Stouffville's local dance troupe, is offering a residency program that will have camp-

ers incorporated into one of their productions.

Children must be able to attend all five camp days. The cost is \$225.

The troupe is also offering a daily drama experience that focuses on acting, dance/movement, voice and performance building.

Each day of camp has a different theme.

Campers can attend one or all five days. The cost is \$50 a day.

For more information, go to <http://nineteenonthepark.com/march-break/>

Latcham Gallery camp

Art Camp days are taking place at Latcham Gallery.

Budding artists aged four to 10 will explore a variety of art materials and work on different projects that will nurture creativity as well as their imagination and confidence.

The cost is \$50 per day.

For more information and to register, go to www.latchamgallery.ca/?q=content/art-camps

Amazing Races run

The town has two different Amazing Race opportunities.

The first is a week-long adventure at the Whitchurch-Stouffville Muse-

um that includes "worm" and "dirt" eating roadblocks, a mini bootcamp, mystery solving and obstacle training.

The cost is \$145 and pre-registration is required. Single days are also available.

For more information, go to www.townofws.ca

A one-day Amazing Stouffville Race for 13 to 18 year olds takes place March 13 at the Whitchurch-Stouffville Leisure Centre.

Prizes up for grabs include a pool party and gift cards from Boston Pizza, iTunes and Cineplex.

A team of two costs \$14. Registration can be done at www.townofws.ca

Special guests at library

The Whitchurch-Stouffville Public Library is hosting a number of special guests, including magician Peter Mennie and Cindy Cook from the Polka Dot Door.

There are also preschool crafts, movies and the junior speakers' club taking place throughout the week.

Many of the programs are free but require a ticket, which can be obtained from the library, 30 Burkholder St.

For more information, go to www.wsplibrary.ca

SWEET TIMES AT SUGARBUSH

Whitchurch-Stouffville gets its sweet spot back beginning this weekend.

The Toronto Region Conservation Authority's Sugarbush Maple Syrup Festival is on from Saturday through April 6 at Bruce's Mill Conservation Area.

Activities include demonstrations, wagon rides, live entertainment, pancakes and maple syrup.

Special activities are offered during March break and weekends.

Bruce's Mill is at 3291 Stouffville Rd., east of Warden Avenue. The park is open weekdays from 9:30 a.m. to 4 p.m. and weekends from 9:30 a.m. to 5 p.m.

The park is closed Mondays and Tuesdays, except during March break.

For more information, go to maplesyrupfest.com.

For group bookings, call 416-667-6295.

WagJag

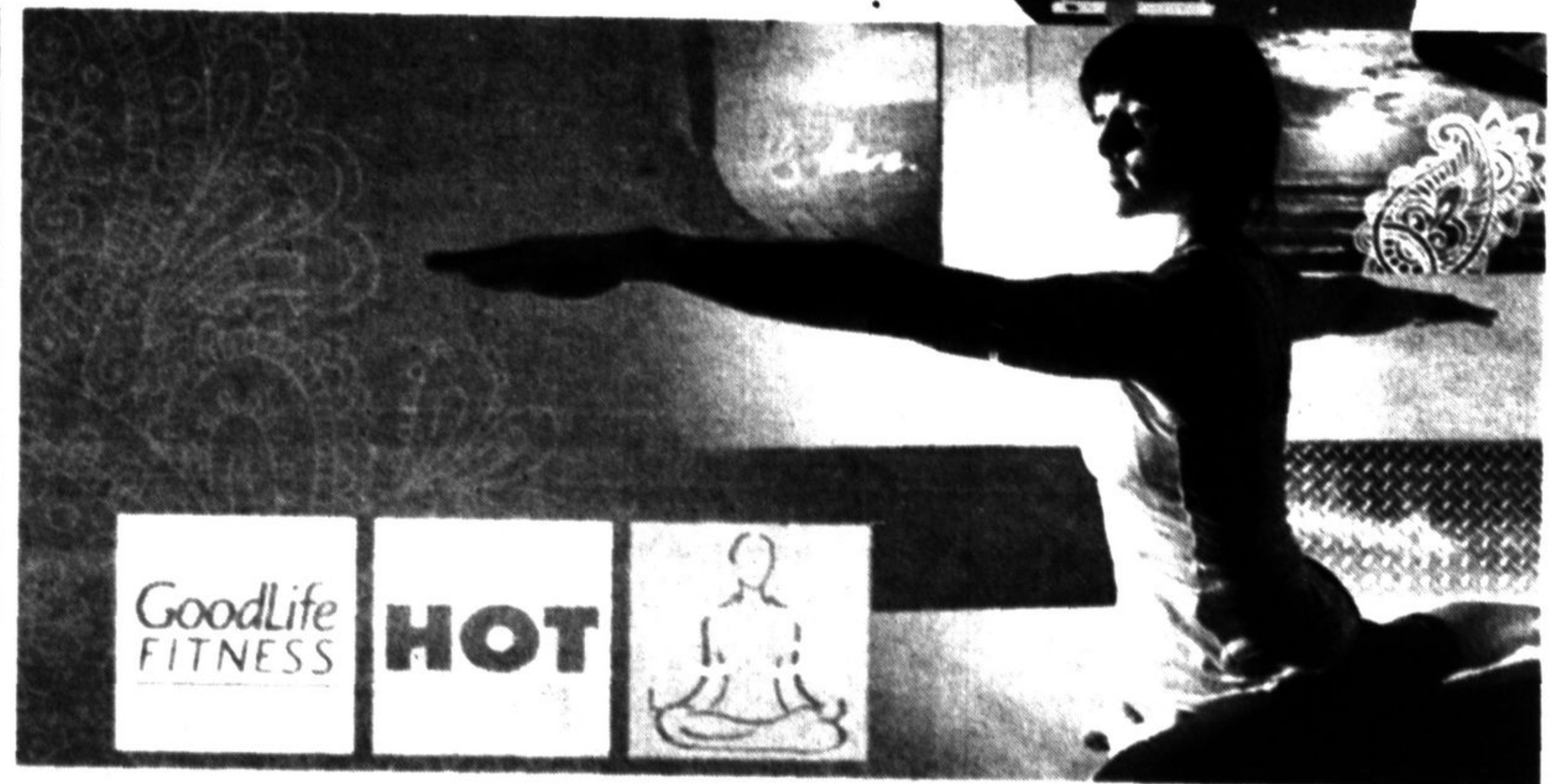
New Year. New WagJag.
Rediscover the Joy of Saving

Visit WagJag.com



Buy Online: 50% off \$7.50

\$7.50 FOR 1 TICKET TO THE INTERNATIONAL HOME & GARDEN SHOW AT THE METRO TORONTO CONVENTION CENTRE FROM MARCH 6-9, 2014 (A \$15 VALUE) AT SHOWCASE MARKETING (HOME & GARDEN)



Buy Online: 64% off

\$25 FOR 5 HOT YOGA CLASSES FOR NON-MEMBERS ONLY (UP TO A \$70 VALUE) GOODLIFE FITNESS (HOT YOGA)



brought to you by
your trusted hometown
Metroland Newspaper

Stouffville
Sun-Tribune

To advertise your deal call one of our Metroland
Sales Representatives at 905-943-6100