

**WOODBINE CHRYSLER**

**BE YOUR OWN SANTA**  
**EVENT NOW ON!**

**2014 GRAND CARAVAN  
CANADA VALUE PACKAGE**

**NO PAYMENTS  
FOR**

**90**  
**DAYS**



**Cash Price**  
**\$17,795** +HST

**\$295** +HST

**24 Month Walkaway Lease**

**24 MONTHS @ 4.99% APR**  
**\$1171.49 total DWN, includes**  
**1st month and security deposit**

**2014 RAM 1500  
QUAD CAB SLT 4X4**  
22G package v6  
Stk # 214111  
**MSRP**  
**\$46,005**



**SALE PRICE**  
**\$33,995** +HST

**48 month lease**  
**\$4945 total down**  
**4.99% \$429+hst /month**

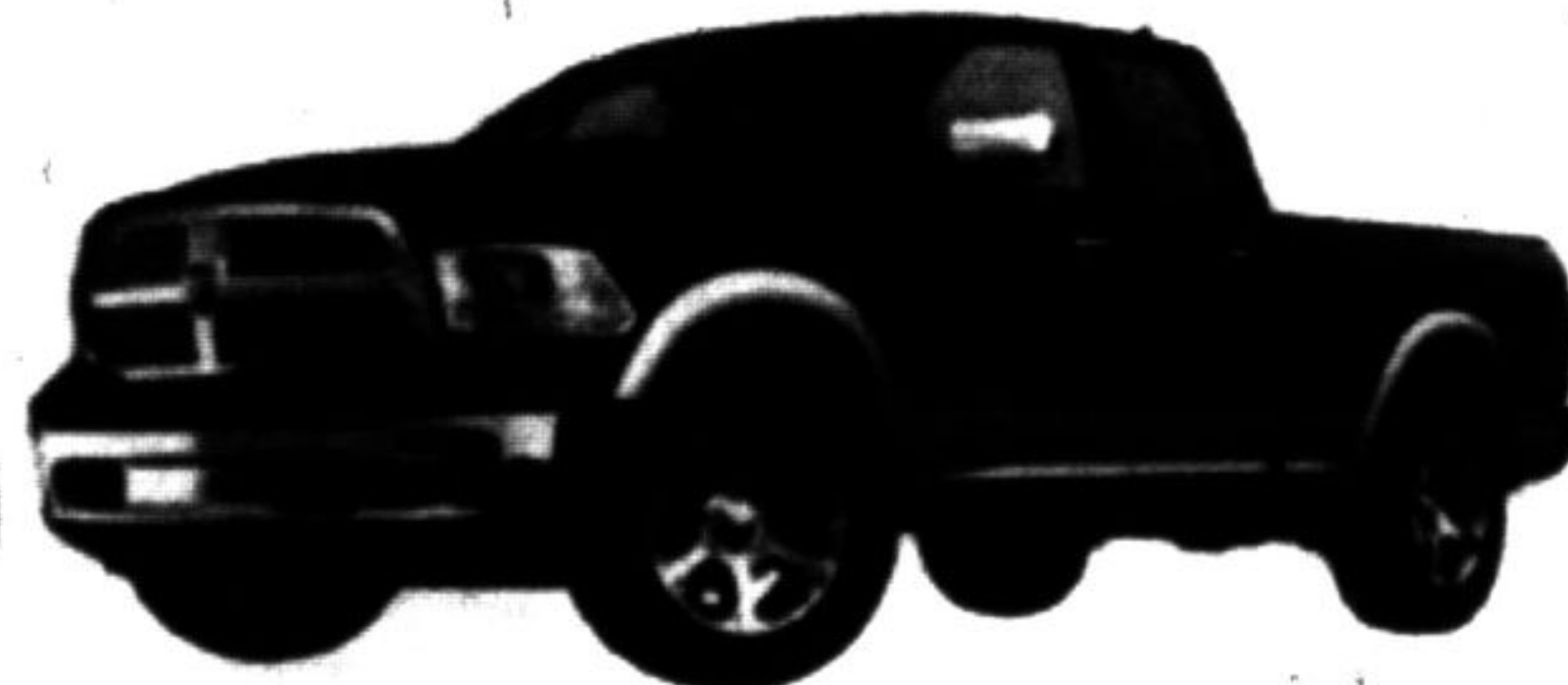
**2014 RAM 1500  
CREW CAB SPORT 4X4**  
26L package 8spd hemi  
Stk # 21197  
**MSRP**  
**\$51,015**



**SALE PRICE**  
**\$39,795** +HST

**48 month lease**  
**\$5018 total down**  
**4.99% \$499+hst /month**

**2014 RAM 1500  
CREW CAB LARAMIE 4X4**  
26H package 8spd hemi  
Stk # 21225  
**MSRP**  
**\$61,475**



**SALE PRICE**  
**\$49,775** +HST

**48 month lease**  
**\$5208 total down**  
**4.99% \$669+hst /month**

Purchase price includes factory rebates, freight, air tax, omvic fee ... taxes and licensing excluded

**NOT ALL VEHICLES EXACTLY AS SHOWN**

The Make No Payments for 90 Days offer applies to retail customers who finance a new 2014 Chrysler, Jeep, Dodge or Ram vehicle (except 2014 Dodge Avenger, V6 and Dodge Avenger or eligible 2013 Dodge Dart, Ram Heavy Duty or Fiat model) at a special fixed rate or approved credit through Royal Bank of Canada, TD Auto Finance or Scotiabank between December 10, 2013 and January 2, 2014. Monthly payments will be deferred for 90 days and contracts will be extended accordingly. Interest charges will not accrue during the first 90 days of the contract. Customers will be responsible for any required down payment, license, registration and insurance costs at time of contract. Some conditions apply. See your retailer for complete details.

**LONGMAN'S**  
**WOODBINE**  
(Markham)  
Jeep CHRYSLER DOODS  
Proudly Serving Markham & Unionville Since 1983

**905.415.2260**  
**8280 WOODBINE AVE.**  
(Woodbine Ave @ HWY 7)  
**www.woodbinechrysler.com**

