

TOWN OF WHITCHURCH-STOUFFVILLE

Customer Service Centre:
905-640-1900 or 1-855-642-TOWN (8696)
Automated Lines:
905-640-1910 or 1-855-642-TOWS (8697)

111 Sandiford Drive, Stouffville, ON L4A 0Z8

www.townofws.ca

NOTICE OF COUNCIL MEETINGS



Council Chamber • 111 Sandiford Drive

TUESDAY, DECEMBER 17
Council Meeting - 3 p.m.

The agenda for this meeting will be available for review at the Municipal Offices, Whitchurch-Stouffville Public Library and on our website the Thursday prior to the meeting. The Calendar of Council meetings for the year is available on our website.

NOTICES

HOLIDAY CLOSURES

The Municipal Offices will be closed from Tuesday, December 24 at noon through to Wednesday, January 1. The Municipal Offices will re-open Thursday January 2 at 8 a.m.
For hours of operation of Town facilities, please see our website.

FOOD & GIFTS FOR TICKETS

December 1 until December 16

Tickets issued with the flyer: Food & Gifts for Tickets attached, between December 1 and December 15 are eligible to be paid by donation. Please bring new unwrapped items suitable for children or non-perishable food items to the Customer Service Centre at the Municipal Offices between 8 a.m. and 5 p.m. Monday to Friday, starting December 2 until December 16. The value of the donations must be equal to or greater than that of the ticket (purchase receipts are required).

NOTICES CONT'D

GARBAGE & RECYCLING HOLIDAY COLLECTION SCHEDULE

Please have all items curbside by 7 a.m.

Regular Collection Day:	Will Be Collected On:
Wednesday, December 25	Thursday, December 26
Thursday, December 26	Friday, December 27
Friday, December 27	Saturday, December 28
Wednesday, January 1	Thursday, January 2
Thursday, January 2	Friday, January 3
Friday, January 3	Saturday, January 4

UPCOMING EVENTS

MAYOR'S FAMILY NEW YEAR'S EVE CELEBRATION

Tuesday, December 31 at 6:30 p.m.
Memorial Park

Join us for a free New Year's Eve celebration that promises to be a fun family night out! Horse-drawn wagon rides, bonfire, skating (weather permitting), music, ice sculpting, complimentary hot dogs, hot chocolate and other goodies. Fireworks at 9 p.m.

MAYOR'S NEW YEAR'S DAY FREE SKATE

Wednesday, January 1 from 1 p.m. to 3 p.m.

Bring your family out for a free skate at Stouffville Clippers Sports Complex (120 Weldon Road) on Pad 1.

NOTICES CONT'D

HELP US KEEP THE ROADS CLEAR

Parking on both sides of the streets restricts access for emergency vehicles and snow plows. Help us keep the roads clear by NOT parking directly opposite a car that is already parked on the road. It is very difficult and sometimes not possible to get our emergency vehicles and snow plows through cars parked this way on our residential streets.

How can you help us? When parking, ask yourself if your vehicle will block the passage of an emergency vehicle or snow plow. Wherever possible, please park in your garage or fully on your driveway. When it snows and if possible, please try to remove your vehicle off the road. For more information, visit www.townofws.ca.



Avoid parking directly opposite a car already parked on the road.

Do not park your vehicle this way. You will get a ticket.



What's On in Whitchurch-Stouffville

Leisure & Community Services 905-642-PLAY (7529) leisure.services@townofws.ca

Museum 905-727-8954 or 1-888-290-0337 wsmuseum@townofws.ca

Soccer City Walking Club

Starting Wednesday, December 11 at 45 Innovator Drive

Every Monday, Wednesday and Friday at 9 a.m. to 11 a.m. FREE in December! Bring indoor shoes to walk. If you have any questions, please contact Barb Armstrong at barb.armstrong@townofws.ca or at x 2294.

SANTA PHOTO AND FUNDAY

Sunday, December 15 from 11 a.m. to 3 p.m.

Come to SoccerCity at 45 Innovator Avenue, to take a photo with Santa and enjoy free face painting, jumping castles, clown shows, magic show, comedy juggler show and Markus from Treehouse.

Fitness Membership Holiday Special

Available from Sunday, December 1 to Tuesday, December 24

One Month Fitness \$50 HST Included
One Month Fitness Plus \$60 HST Included (Includes group fitness and aquafit)
13 months for the price of 12
Receive one month FREE with the purchase of any New Annual Membership
These rates applies to NEW members only, NOT renewals

Holiday Swim, Skate And Fitness Schedule

Monday, December 23 to Sunday, January 5
Now online or call the Leisure Centre for details

Library 905-642-READ (7323) or 1-888-603-4292 www.whitchurch-library.on.ca

WSPL presents "The Little Match Girl Revisited"

Sunday, January 5 3 p.m.

Performed by MOTUS O
Lebovic Centre for Arts & Entertainment -19 On The Park
Cost \$15/ticket. Tickets on sale at the Library

Holiday Movie @ your Library

Thursday, January 2 from 1:30 p.m. to 3:06 p.m.

"Turbo"
A freak accident might just help an everyday garden snail achieve his biggest dream: winning the Indy 500.
Rated G. Free Admission!

askON help @ your library

Have a quick question for your library?
Get your answer by txt msg! Text Start to 289-207-0010

Check out a library pedometer

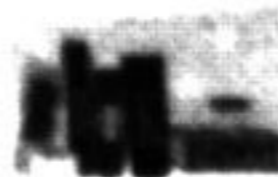
Take a step towards better health. Track your steps and make walking a regular part of your day!

Morning Book Club @ Your Library

Third Monday of the month 10 a.m. to 11:30 a.m.
Contact Faith at 905-642-7323, ext. 5234 or at faith.shergold@wspilibrary.ca for details or to register

Teen Book Club!

Do you love to read? Write? Chat with others?
Are you in Grade 9-12? Do you have a WSPL card?
Consider joining the library's teen book club!
Contact Faith at 905-642-7323, ext. 5234 or at faith.shergold@wspilibrary.ca



Museum 905-727-8954 or 1-888-290-0337 wsmuseum@townofws.ca

A Candlelight Christmas

Saturday, December 14th, 2013
6:30 p.m. & 8:00 p.m.

Join our costumed staff on this enchanting evening!
Explore Christmas traditions while sampling 19th-century foods, decorations & entertainment. Enjoy a horse-drawn hay ride and then warm up with hot apple cider and traditional baking.

Pre-Registration required. Call the Museum to book today!
Adults: \$16.00, Children under 12: \$10.00.
Members' discount applies!

Holiday Hours

The Museum will be closed December 24 to January 1
Please visit www.wsmuseum.ca for our winter hours and exciting 2014 events!



Latcham Gallery 905-640-8954 www.latchamgallery.ca

Winter Art Classes - Children & Youth

Register Today!

Full day Winter Break Art Camp Days: January 2 & January 3 (ages 4-10)
Saturday morning Budding Artists (ages 6-11) starting January 11 (8 sessions)
Saturday afternoon Budding Artists (ages 4-8) starting January 11 (8 sessions)
Thursday after-school Art Jam: Youth Art Classes (ages 10-16) starting January 16 (8 sessions)
Full day P.A. Day Art Workshop: January 17 (ages 4-10)

Fall Art Classes - Adults 18+

Tuesday evening Life Drawing starting January 14
NEW Wednesday evening Acrylic Painting with instructor Colin Whitebread

Please visit www.latchamgallery.ca for details.

CURRENT EXHIBITION IMAGES 2013/2014

December 12 to January 4
Artwork by SDSS graduating art class
Opening Reception:
Thursday December 12 at 7 p.m. to 9 p.m.

