



TODAY ONLY PUBLIC AUCTION

7, Stouffville Sun-Tribune ■ www.yorkregion.com ■ Saturday, Sept. 28, 2013

HIGH-VALUE GEMS SEIZED BY GOVERNMENT-APPOINTED BAILIFF. VARIOUS LOTS BEING SOLD FOR GOVERNMENT CONSIGNEES, BANKS AND OTHER CREDITORS.

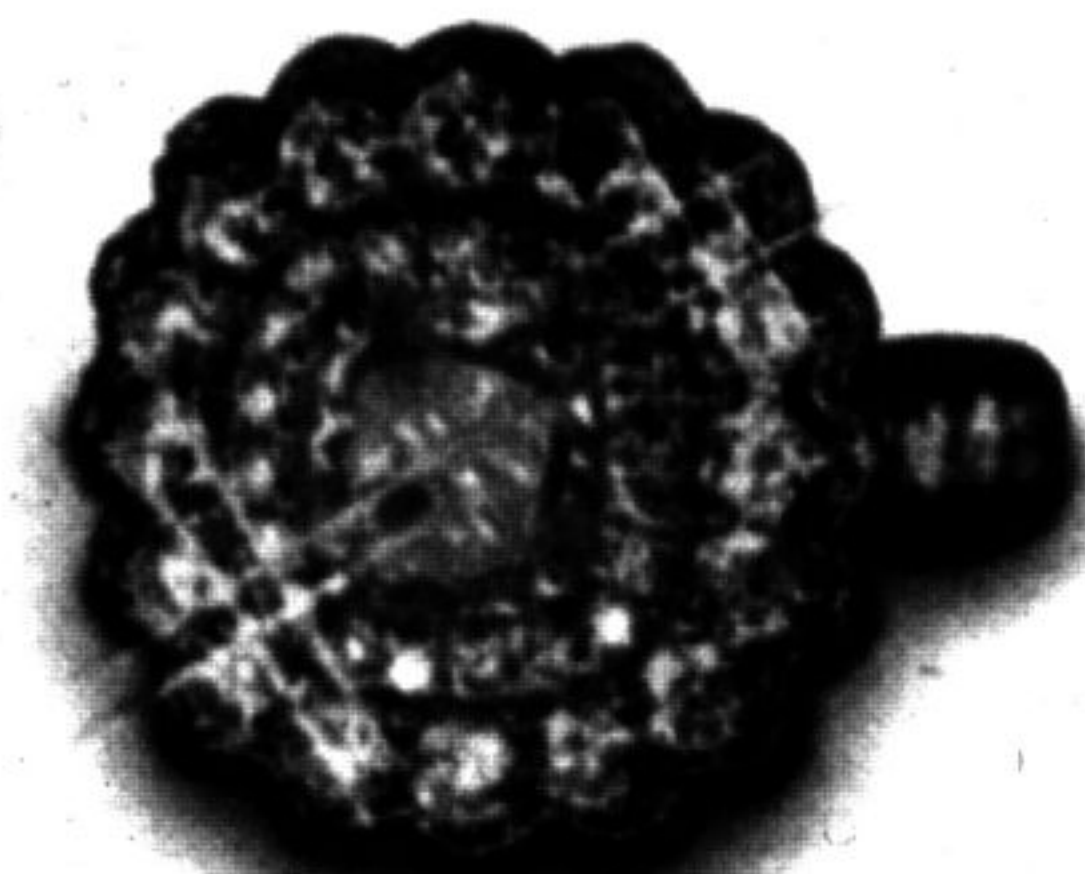
**23CT DIAMOND NECKLACE
WITH A 4CT HEART-SHAPED
DIAMOND PENDANT**

PLUS MANY OTHERS

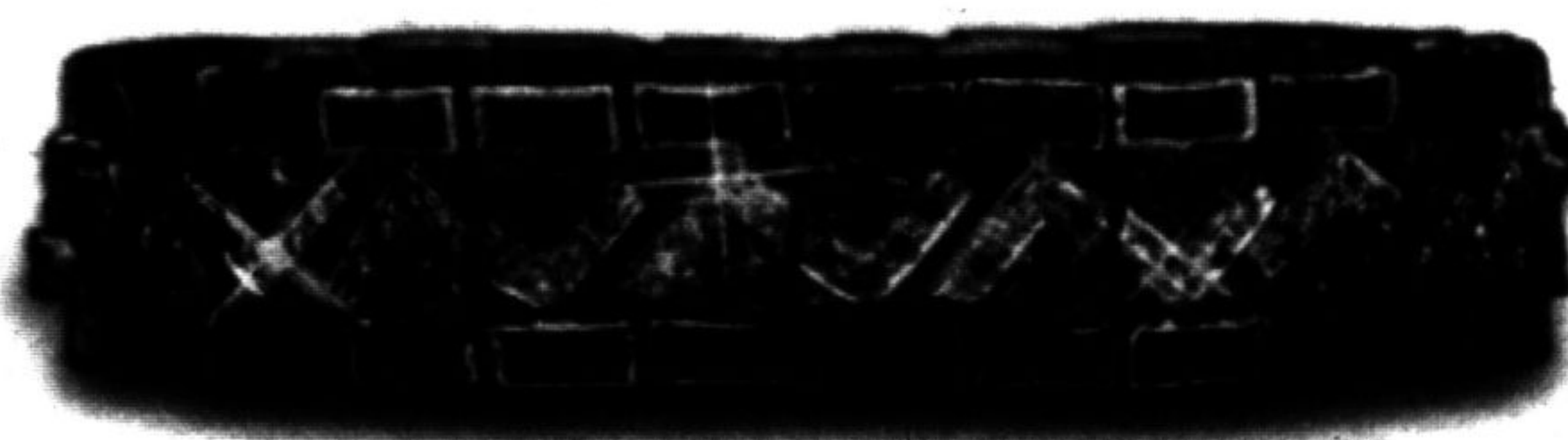
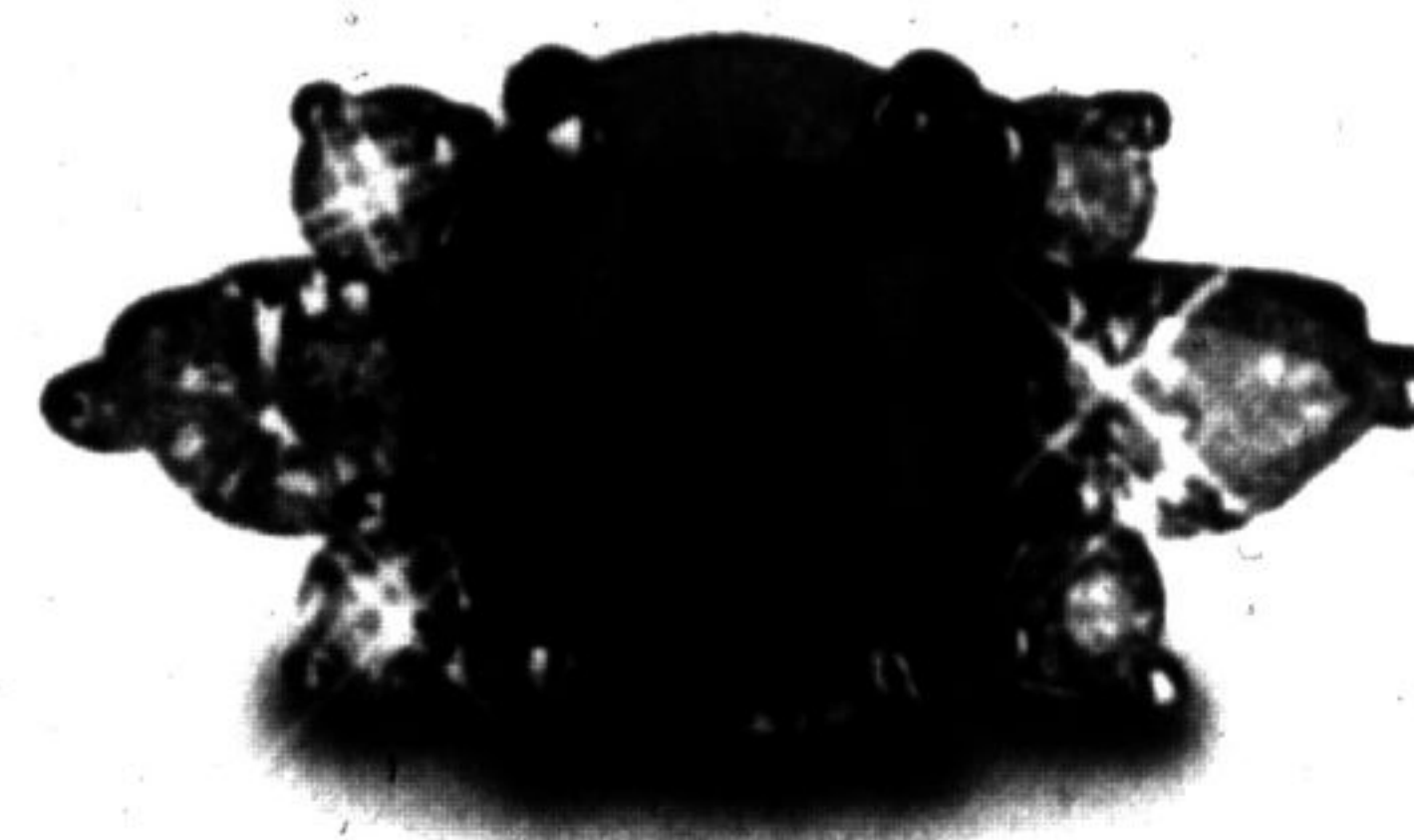


**GIA CERTIFIED, VS2
2CT FANCY VIVID YELLOW
DIAMOND RING**

PLUS MANY OTHERS



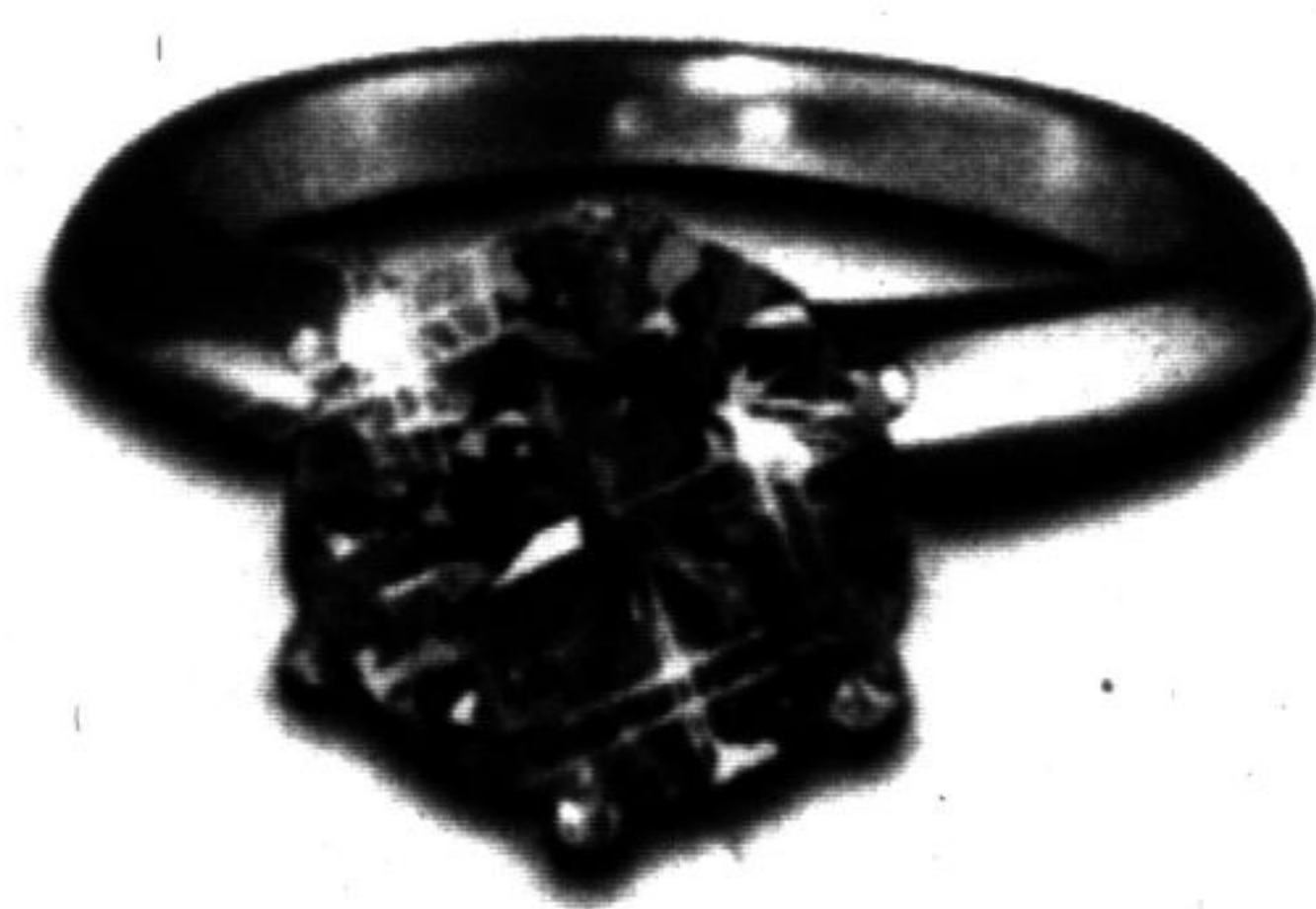
**GIA CERTIFIED,
6CT UNHEATED NATURAL
SAPPHIRE & DIAMOND RING**
PLUS MANY OTHERS



**LADY'S 8CT RUBY, EMERALD,
1.5CT DIAMOND BRACELET**
PLUS MANY OTHERS



**GIA CERTIFIED, VS2
5CT NATURAL FANCY YELLOW
DIAMOND RING**
PLUS MANY OTHERS



**EGL CERTIFIED, VS1
2.5CT, D COLOUR
DIAMOND RING**

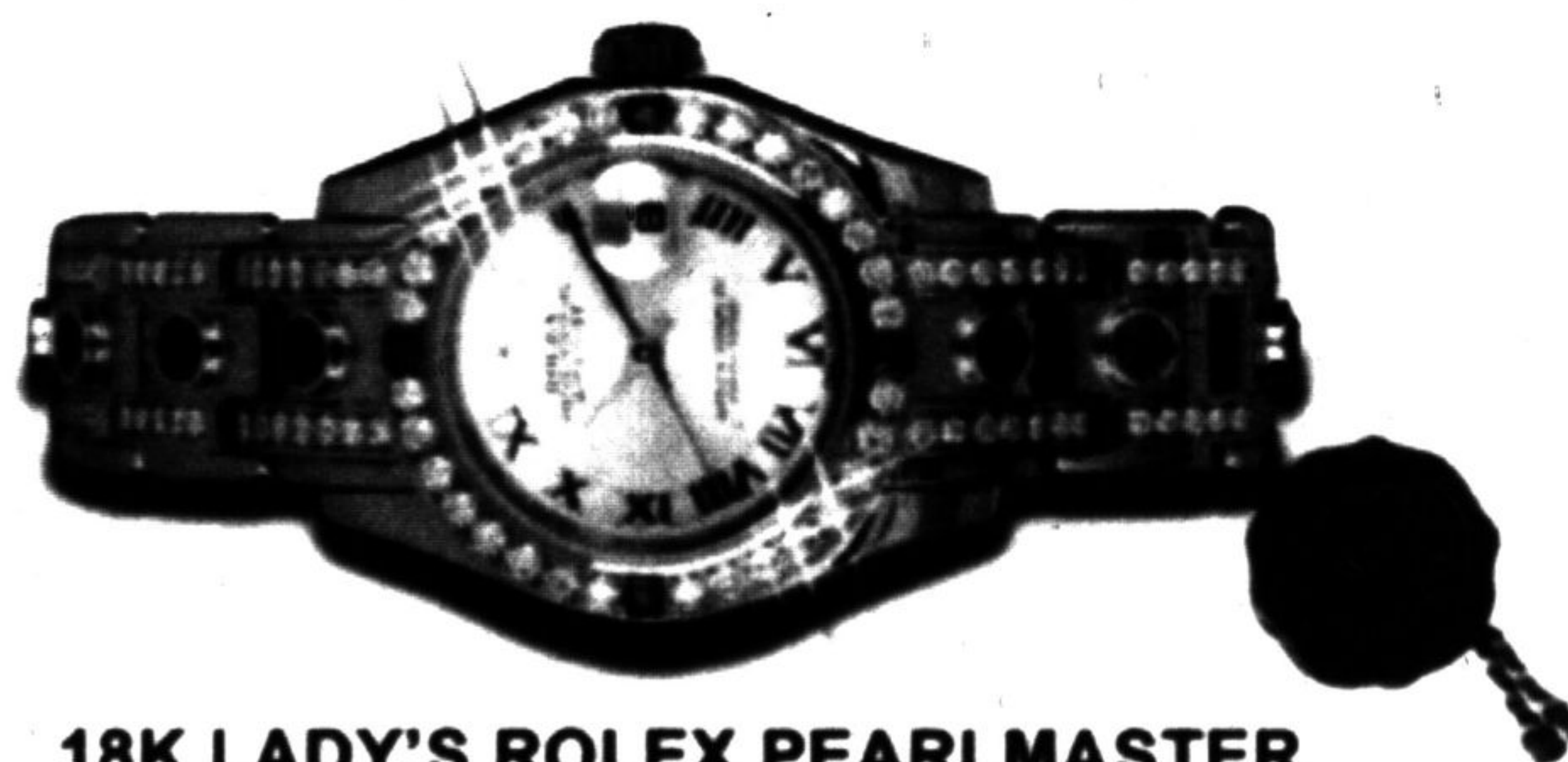
PLUS MANY OTHERS



**APPR. \$425,000
5CT DIAMOND RING**
PLUS MANY OTHERS



**18K LADY'S CARTIER TANK
FRANCAISE W/ DIAMONDS**
PLUS OTHER CERTIFIED SWISS WATCHES



**18K LADY'S ROLEX PEARLMASTER
W/ DIAMONDS AND SAPPHIRES**
PLUS OTHER CERTIFIED SWISS WATCHES



**18K MEN'S ROLEX
PRESIDENT W/ DIAMONDS**
PLUS OTHER CERTIFIED
SWISS WATCHES

**LEBOVIC CENTRE FOR ARTS & ENTERTAINMENT / NINETEEN ON THE PARK, 19 CIVIC AVENUE
WHITCHURCH-STOUFFVILLE, SATURDAY, SEPTEMBER 28TH.
VIEWING 1PM AUCTION 2PM**

15% HANDLING CHARGE + HST ADDED. VALID PHOTO ID. ITEMS MAY NOT BE EXACTLY AS SHOWN. ADDITIONS, RESERVES AND/OR DELETIONS MAY APPLY.
ASSETAUCTIONS.CA

905-803-0555