

TRADE IN UP

SUMMER CLEAROUT EVENT

GET UP TO \$10,275 IN TOTAL DISCOUNTS*

ULTIMATE FAMILY PACKAGE



- 2nd row overhead DVD console
- 9-inch video screen
- ParkView® rear back-up camera
- Hands-free connectivity with Uconnect™ Voice Command with Bluetooth*
- Rear air conditioning with heater

INCLUDES \$3,275 IN PACKAGE SAVINGS!



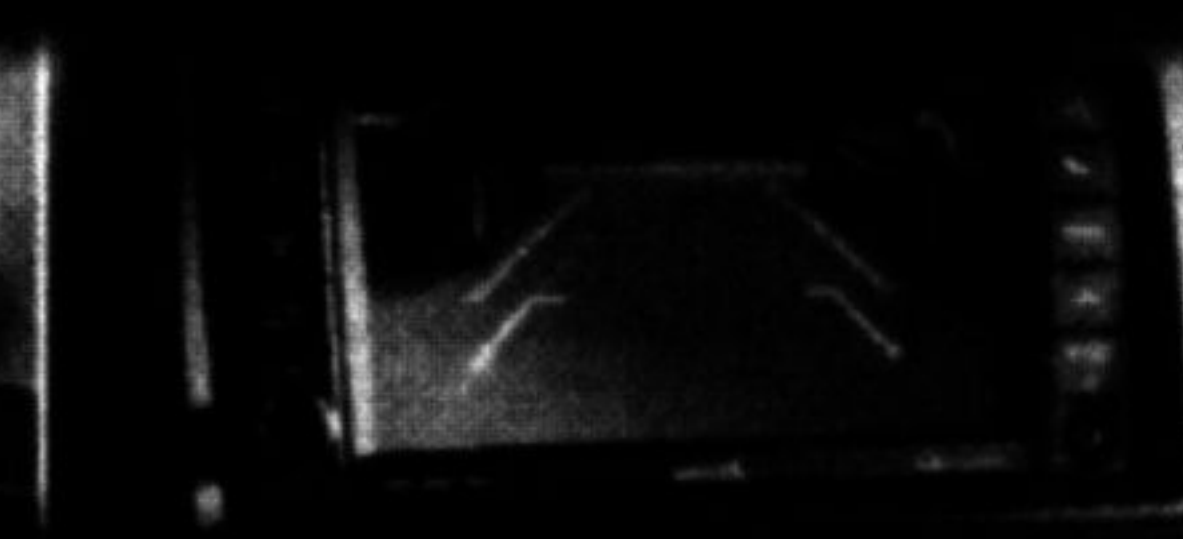
2ND ROW OVERHEAD 9-INCH VIDEO SCREEN



PREMIUM INTERIOR



2ND ROW SUPER STOW 'N' GO



PARKVIEW REAR BACK-UP CAMERA

2013 Dodge Grand Caravan Crew Plus shown.*

2013 DODGE GRAND CARAVAN CANADA VALUE PACKAGE

CANADA'S BEST-SELLING MINIVAN FOR 29 YEARS

\$19,995*

PURCHASE PRICE INCLUDES \$8,100 CONSUMER CASH, FREIGHT, AIR TAX, TIRE LEVY AND OMVIC FEE. TAXES EXCLUDED. OTHER RETAILER CHARGES MAY APPLY.*

OR LEASE FOR

\$99 BI-WEEKLY* @ 4.99% FOR 60 MONTHS WITH \$3,669 DOWN



ULTIMATE JOURNEY PACKAGE

- Remote start
- ParkView® rear back-up camera
- 3.6 L Pentastar™ VVT V6 with 6-speed automatic
- Uconnect™ hands-free communication with Bluetooth*
- 2nd row overhead 9-inch screen

INCLUDES \$3,625 IN PACKAGE SAVINGS!



PREMIUM SOFT-TOUCH INTERIOR



BEST-IN-CLASS STORAGE



PARKVIEW REAR BACK-UP CAMERA



LARGEST TOUCH SCREEN IN ITS CLASS

2013 Dodge Journey R/T AWD shown.*

2013 DODGE JOURNEY CANADA VALUE PACKAGE

CANADA'S #1 SELLING CROSSOVER*

\$19,995*

PURCHASE PRICE INCLUDES \$2,000 CONSUMER CASH, FREIGHT, AIR TAX, TIRE LEVY AND OMVIC FEE. TAXES EXCLUDED. OTHER RETAILER CHARGES MAY APPLY.*

OR LEASE FOR

\$99 BI-WEEKLY* @ 4.99% FOR 60 MONTHS WITH \$4,649 DOWN

*Your local retailer may charge additional fees for administration/pre-delivery that can range from \$0 to \$1,098 and anti-theft/safety products that can range from \$0 to \$1,298. Charges may vary by retailer.

LESS FUEL. MORE POWER. GREAT VALUE.
10 VEHICLES WITH 40 MPG HWY OR BETTER.

Dodge.ca/Offers

(((SiriusXM)))

DODGE CARAVAN KIDS



Less Fuel, More Power, Great Value is a comparison between the 2013 and the 2012 Chrysler Canada product lineups. 40 MPG or greater claim (7.0 L/100 km) based on 2013 EnerGuide highway fuel consumption estimates. Government of Canada test methods used. Your actual fuel consumption will vary based on powertrain, driving habits and other factors. See retailer for additional EnerGuide details. ©2013 Dodge Grand Caravan Canada Value Package - Hwy: 7.9 L/100 km (36 MPG) and City: 12.2 L/100 km (23 MPG); 2013 Dodge Journey 2.4 L with 4-speed automatic - Hwy: 7.7 L/100 km (37 MPG) and City: 11.2 L/100 km (25 MPG). Wise customers read the fine print. *The Trade In/Trade Up/Summer Clearout Event offers are limited time offers which apply to retail dealers of selected new and used models purchased from participating retailers on or after July 11, 2013. Offers subject to change and may be extended without notice. All pricing includes freight, \$170.00 air tax (if applicable), title, and OMVIC fee. Pricing includes license, insurance, registration, any retailer administrative fees, other retailer charges and other applicable fees and taxes. Retailer/trade-in may be necessary. Retailer may sell for more. **\$1,000 total discounts are available on the new 2013 Dodge Grand Caravan 150 model and \$1,000 consumer cash discount and \$1,000 Ultimate Family Package Savings. See your retailer for complete details. †Remote Family Package discounts available at participating retailers on the purchase/lease of a new 2013 Dodge Grand Caravan 150 with Ultimate Family Package. ‡Discount consists of \$1,500 in Bonus Cash that will be deducted from the negotiated price after taxes, and \$1,500 in cost options that will be deducted from the negotiated price before taxes. Some conditions apply. See your retailer for complete details. †††2013 Dodge Grand Caravan 150 shown. Price including applicable consumer cash discount. ††††2013 Dodge Journey R/T AWD shown. Price including applicable consumer cash discount. †††††The word "Jeep" is a registered trademark of Chrysler Group LLC. ††††††The SiriusXM logo is a registered trademark of SiriusXM Satellite Radio.