

# TOWN OF WHITCHURCH-STOUFFVILLE

Customer Service Centre:  
905-640-1900 or 1-855-642-TOWN (8696)  
Automated Lines:  
905-640-1910 or 1-855-642-TOWS (8697)

111 Sandiford Drive, Stouffville, ON L4A 0Z8

www.townofws.ca

## NOTICE OF COUNCIL MEETING



Council Chambers • 111 Sandiford Drive

**TUESDAY, SEPTEMBER 3**  
Council Meeting – 7 p.m.

**TUESDAY, SEPTEMBER 17**  
Council Meeting – 3 p.m.  
Public Meeting – 7 p.m.

**TUESDAY, SEPTEMBER 24**

Pace Financial/Geranium, Mixed Used Condominium at  
Southeast Corner of Lloyd and Main Street  
Special Council Meeting – 7 p.m.

The agenda for these meetings will be available for review at the Municipal Offices, Whitchurch-Stouffville Public Library and on our website at noon the Thursday prior to the meeting. The Calendar of Council meetings for this year is available on our website.

## NOTICES

At the Council meeting of **Tuesday, September 3**, commencing at 7 p.m., Council will be considering the following:

**By-law 2013-102-FI** proposed revisions to Schedule G, Planning Fees in the 2013 User Fees.

**By-law 2013-103-RE** to delegate routine Council powers and duties to the Director of Planning & Building Services pertaining to the authority to approve and execute Site Plan Control Agreements and Site Plan Control Exemptions for single detached dwellings and related non-residential expansions, accessory buildings and pools, expansion of existing buildings and structures in the Oak Ridges Moraine Conservation Plan Area.

## NOTICES – CONT'D

**By-law 2013-104-SI** to repeal and replace By-law 2011-001-SI together with proposed revisions relating to applicability of site plan control to single detached dwellings and related non-residential expansions, accessory buildings and pools, and expansion of existing buildings and structures in the Oak Ridges Moraine Conservation Plan Area.

Comments and/or questions on any of the above, should be directed to Alan Drozd at ext. 2320 or alan.drozd@townofws.ca

### Terms of Reference for Recount Advisory Committee

Inquiries regarding this report should be directed to Michele Kennedy, Town Clerk at ext. 2224 or michele.kennedy@townofws.ca

### THE MUNICIPAL OFFICES ARE CLOSED MONDAY, SEPTEMBER 2

The Whitchurch-Stouffville Museum & Community Centre, Whitchurch-Stouffville Public Library, Leisure Centre, Stouffville Arena and Stouffville Clippers Sports Complex are also closed.

The Municipal Offices re-open Tuesday, September 3 at 8:00 a.m.

### POOL CLOSURE NOTICE

The Leisure Centre pool will be closed from Monday, September 2 to Friday, September 6 for maintenance.

### YRT/VIVA SERVICE CHANGES FOR THE NEW SCHOOL YEAR

Approximately 50 YRT/Viva service changes across York Region take effect Sunday, September 1 for the school season. Most High School Specials (400 series) and route diversions to schools return for the new school year. All revised schedules are available at [www.yrt.ca](http://www.yrt.ca)

## NOTICES – CONT'D

### CIVIL MARRIAGES

Planning a wedding is an exciting, yet sometimes stressful experience. If you have decided on a destination wedding, or if you just want something very low-key and reasonably priced, let us assist you in planning a civil marriage here. Our trained marriage officiants have been part of small, intimate weddings and larger services with 50 or more guests. Our focus is to create a unique and enjoyable experience for the couple.

For more information, contact our Customer Service Centre or visit our website.



## BID DOCUMENTS

Bid packages may be obtained by registering on Biddingo at: [www.biddingo.com](http://www.biddingo.com) (a subscriber and/or document fee may apply) or from our Customer Service Centre. Visit our website (For Business tab) for more information.

Bid Number	Description	Bid Closing
WS-T-13-36	Roof Replacement at the former Whitchurch-Stouffville Library, 6240 Main Street, Stouffville	Wed., Sept. 11 before 3:00 p.m. EST

The Corporation of the Town of Whitchurch-Stouffville reserves the right to accept or reject all or part of any Bid and also reserves the right to accept other than the lowest Bid and cancel any Call for Bids at any time.

# What's On in Whitchurch-Stouffville

## Leisure & Community Services

### PROGRAM REGISTRATION NOW UNDERWAY FOR ALL FALL PROGRAMS

Fall programs begin the week of September 23  
Register online: [www.townofws.ca/wsplayonline](http://www.townofws.ca/wsplayonline) or in person at the WS Leisure Centre, 30 Burkholder St

### BALLANTRAE FALL FAIR

**SUNDAY, SEPTEMBER 8 ~ 8 A.M. TO 4 P.M.**

Featuring Doo Doo the Clown, Church service, pancake breakfast, BBQ, bake/craft sale, farmers' market, pony and ATV rides, jumping castles and live entertainment

For a complete schedule of events go to: [www.philbannon.ca](http://www.philbannon.ca)

### COMING THIS FALL TO LEMONVILLE COMMUNITY CENTRE:

Recreation Programs • Zumba Gold • Yoga • Pilates • Tai Chi  
Registration times/dates will be announced on the Town website and in the Leisure eNews  
Sign up for the eNews online at [www.townofws.ca/enews](http://www.townofws.ca/enews)



## Museum

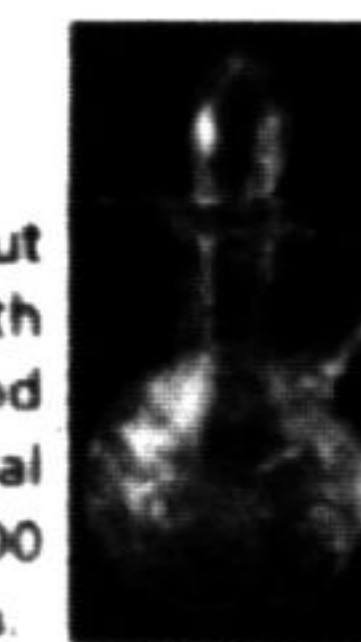


### SWITCH TO WINTER HOURS

As of Wednesday, September 4 the Museum switches to its winter schedule and will be open Monday through Friday, 1 p.m. to 5 p.m. Special programs still run on the weekends. Please call 905-727-8954 for more information.

### CARING FOR YOUR TREASURES

**Friday, September 13**  
10 a.m. to 3 p.m.  
Learn do-it-yourself preservation and find out how to store family photos and heirlooms with W-S Museum Curator Stephanie Foley and Hilary House National Historic Site Curatorial Assistant Nicola Jago! Non-Members: \$20.00 Members: \$16.00. Bring lunch along with you.



### ABC'S OF ARCHAEOLOGY: WRITE LIKE AN EGYPTIAN

**Saturday, September 21**  
9 a.m. to 12 p.m.  
Drop in for this ancient world writing workshop for kids! \$5.00 per child.



### HISTORY HANDS-ON (H2O): "FALL FAIR"

**Saturday, September 28**  
12 p.m. to 4 p.m.  
Experience a 19th century Fall Fair, find the "needle in the haystack", go on a Scavenger Hunt, make and eat pretzels! Adult: \$5.00. Child \$3.00



## Library

**JOIN US FOR STORY TIME** beginning week of September 9! Ages 3-6 years  
Mondays 10:15 a.m. to 10:45 a.m. & 7 p.m. to 7:30 p.m. (Wear your PJs)  
Tuesdays 10:30 a.m. to 11 a.m.  
Saturdays 10:30 a.m. to 11 a.m.

### LOOKING FOR A BOOK CLUB?

Come out for this planning meeting to create the Book Club of your choice!  
**Monday, September 9 10 a.m. to 11:30 a.m.**  
Bring some suggested titles for discussion at future meetings. Everyone welcome!

### Join WSPL @ the Ballantrae Fall Fair

**Sunday, September 8 11 a.m. to 3 p.m.**  
Information on library services: Craft for ages 3-6 yrs

### SPEED DATING FOR WRITERS

**Saturday, September 28 1 p.m. to 4 p.m.**  
Find a writing buddy. Limited space available  
Cost \$10 plus HST. Register now!

### YOUNG ADULT SERVICES @ WSPL

New Co-ordinator of Young Adult Services at WSPL!  
If you're between 12-30 years old and have ideas about what the library could do for you, let us know on Facebook, Twitter, or at [fshegold@whitchurch-library.on.ca](mailto:fshegold@whitchurch-library.on.ca) Interested in a book, movie, or videogame, or in volunteering? Get in touch!

### ABOUT THE LIBRARY'S E-NEWSLETTER – LIBRARY BYTES?

Programs, events, new resources, and more!  
Visit the library web site to add your name!

### PROGRAMS AND SERVICES GUIDE FOR SENIORS

Details on Active Living, Caregiving, Finances, etc.  
Available in a variety of languages. Pick up your FREE copy now!

### BOOKS ON WHEELS

Unable to visit the library in person?  
Volunteers will deliver and pick up library items at your home.  
Call Catherine at 905-642-7323, ext. 5224 to register.

### E-BOOK TITLES @ YOUR LIBRARY

Check out the library catalogue for free, downloadable titles for your e-reader or tablet!

